

FAIRY AND PYRAMID LAMPS

from the collection of

T. Robert Anthony

Skinner Auction

September 20, 1984

This extensive collection of 19th and 20th century fairy and pyramid lamps was started in the mid 20's by Beatrice "Pete" Emes Tobias. In subsequent years, she and her husband Robert Anthony Tobias, (also known as T. Robert Anthony), worked together in building and improving the collection. After his wife's death in 1968, his collecting evolved into an active dealership as he continued to upgrade his collection.

Mr. Tobias compiled two books on lamps and was the author of numerous articles in fairy lighting for various antique publications. He also presented lectures to interested groups on the history of lighting prior to his death in 1983.

001. PAIR OF PINT BLOWN MOLDED SATIN GLASS LAMPS, France, late 19th century, ruffled rim on acid-etched cylindrical forms highlighted by gilt branch decoration, shade fitting into bulbous corresponding base with continuing design, (some minor chips), ht. 8 3/4 in. Literature: 19th Century Fairy Lamps by T. Robert Anthony, plate 14. (200/300) **Selling Price \$90**



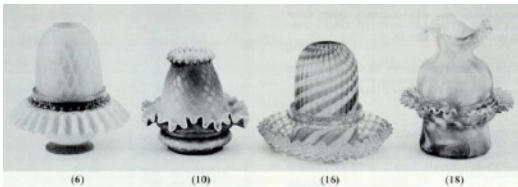
002. PALE CITRON RUFFLED SATIN GLASS SHADE ON CLEAR GLASS BASE, late 19th century, diagonal white stitch pattern, base impressed US Patent Nov. 9 1886, S. Clarke Fairy, (minor chips), ht. 6 in. (100/200) **Selling Price pass**

003. PINK MOTHER-OF-PEARL SATIN GLASS LAMP WITH MATCHING RUFFLED BASE, late 19th century, cased, diamond quilted shade, pressed glass liner, shallow ruffled dish, shade signed Clarke's Patent "Fairy", candle cup stamped US Patent Nov. 9th 1886 no. 35-2296 S Clarke Fairy, ht. 5 3/4, dia. 6 1/4 in. Literature: 19th Century Fairy Lamps, by T. Robert Anthony, plate 8. (100/150) **Selling Price \$150**

004. HAND PAINTED BRISTOL GLASS FAIRY LAMP ON SILVER PLATED PEDESTAL BASE, late 19th century, ruffled pink rim on shade and base, blue floral decoration, clear glass inserts, Greco-Roman revival four legged support on turned pedestal, (minor chip), overall ht. 13 in. Literature: 19th Century Fairy Lamps, by T. Robert Anthony, plate 12. (125/175) **Selling Price \$100**

005. ROSE MOTHER-OF-PEARL SATIN GLASS FAIRY LAMP WITH RUFFLED BASE, late 19th century, cased ruffled edge on shade with fine diagonal threading, ruffled, lobed base, two notched air vents, ht. 5 in. (250/350) **Selling Price \$175**

006. STEVEN & WILLIAMS CASED SATIN GLASS FAIRY LAMP WITH MATCHING BASE, England, late 19th century, chartreuse, diamond quilted mother-of-pearl shade fitting into pressed glass finer and ruffled down-turned base, shade marked with partial label, base and shade signed Clarke, ht. 6, dia. 6 in, Literature: 19th Century Fairy Lamp by T. Robert Anthony, plate 10. (300/400) **Selling Price \$340**



007. NEAR MATCHING PAIR OF YELLOW THORN SATIN GLASS FAIRY LAMPS, late 19th century, with clear pressed glass diamond cut bases, marked Clarke's Cricklite, and one silver plated reticulated stand, (minor chips), ht. 5 in. (without stand). (175/225) **Selling Price \$130**

008. YELLOW MOTHER-OF-PEARL SATIN GLASS FAIRY LAMP WITH MATCHING BASE, late 19th century, cased, diamond quilted shade and liner in ruffled, lobed base, notched air vents, (some rim damage on liner, roughness), ht. 5 1/2 in. Literature: 19th Century Fairy Lamps, by T. Robert Anthony, plate 12 (150/200) **Selling Price \$60**

009. WEBB PEACHBLOW PYRAMID ON CLEAR CLARKE BASE, late 19th century, (minor chip), ht. 3 3/4 in. (125/175) **Selling Price \$90**

010. ROSE MOTHER-OF-PEARL SATIN GLASS FAIRY LAMP, late 19th century, fluted rim on diamond quilted shade, matching base with irregularly ruffled edge, Clarke's glass candle cup, (some chips), ht. 5 in. Literature: 19th Century Fairy Lamps by T. Robert Anthony, plate 8. (300/350) **Selling Price \$150**

011. BLUE AND WHITE STRIPED SATIN GLASS FAIRY LAMP WITH MATCHING RUFFLED BASE, late 19th century, pressed glass finer, crimped rim on base, ht. 5 1/2, dia. 7 1/2 in. (100/200) **Selling Price \$100**

012. CRIMPED PINK SATIN GLASS SHADE ON BRASS CANDLESTICK, Clarke's insert and pegged base, (minor chips), ht. 9 1/2 in. (125/175) **Selling Price \$50**

013. BLUE STRIPED SATIN GLASS FAIRY LAMP AND MATCHING RUFFLED BASE, England, with clear glass candle cup and finer, both marked "S. Clarke, Fairy", (minor chipping), ht. 6, dia. of base: 9 1/4 in. (150/250) **Selling Price \$90**

014. PINK MOTHER-OF-PEARL SATIN GLASS LAMP WITH MATCHING BASE, late 19th century, diamond quilted pattern, applied loop scroll, (some minor chips, discoloration), ht. 5 1/2 in. (150/200) **Selling Price \$80**

015. THREE SATIN GLASS PYRAMID LAMPS WITH CLEAR PRESSED GLASS BASES, 19th and 20th century,

one lime green, white spattered blue and one yellow ribbed; one has Eden light base, (slight chips), ht. 3 3/8, 3 1/2, 3 5/8 in. (150/200) **Selling Price \$100**

016. SWIRLED PINK AND WHITE SATIN GLASS LAMP WITH MATCHING BASE, England, late 19th century, ribbed shade fitting into pressed glass cup and dish base with ruffled rim, shade signed "R" 50725 Trademark "Fairy", ht. 5 1/2, dia. 6 3/4 in. (250/350) **Selling Price \$275**

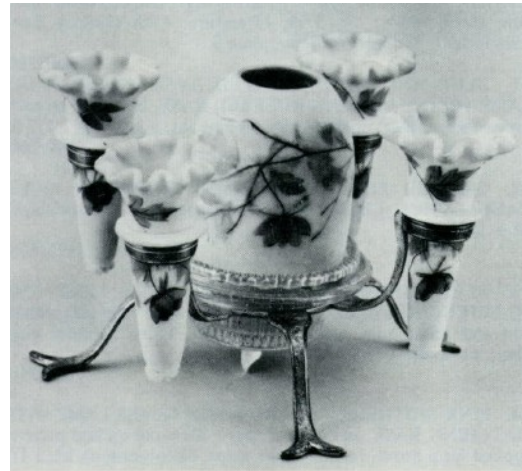
017. SPATTER GLASS PYRAMID ON MATCHING BASE WITH APPLIED CLEAR GLASS DESIGN, late 19th century, cased glass, ht 4 1/4 in. (150/250) **Selling Price \$60**

018. BLUE AND WHITE CAMPHOR SPLASHED LAMP WITH MATCHING BASE, late 19th century, ruffled rim on neck flaring to fit corresponding base, glass liner signed Clarke, (some chips), ht 7 in. Literature: 19th Century Fairy Lamps by T. Robert Anthony, plate 6. (150/200) **Selling Price \$90**

019. MAROON AND YELLOW CASED END-OF-THE-DAY GLASS PYRAMID LAMP ON SILVER PLATED STAND, late 19th century, ribbed shade and matching base, stand cast plated, marked "Rogers Mfg. Co., Hartford, Conn.", (minor chips), ht. 8 1/2 in. Literature: 19th Century Fairy Lamps, by T. Robert Anthony, 1969, plate 6. (100/150) **Selling Price \$50**

020. NEAR MATCHING CASED SPATTER GLASS PYRAMID LAMP, late 19th century, clear diamond cut pressed glass, candle cup, ht. 4 1/2 in, (50/100) **Selling Price \$40**

021. DECORATED BURMESE CENTERPIECE WITH FOUR NOSEGAY VASES, England, late 19th century, ruffle rimmed vases centering pyramid shade and clear candle cup, brass frame with four feet, floral design, ht. 4 1/2, dia. 7 1/4 in. (400/600) **Selling Price \$700**



(21)

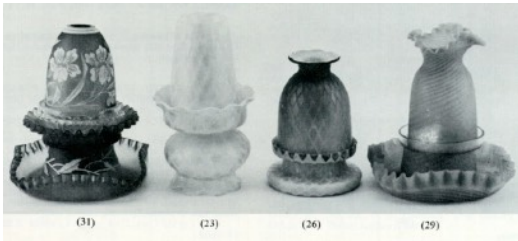
022. YELLOW CORALENE SHADE ON BRASS STAND, late 19th century, scalloped rim on tulip shade with orange sprigs, ht. 7 1/4 in. Literature: 19th Century Fairy Lamps, by T. Robert Anthony, plate 4. (150/200) **Selling Price \$60**

023. YELLOW MOTHER-OF-PEARL SATIN GLASS LAMP WITH MATCHING BASE, late 19th century, fluted rim on diamond quilted shade fitting into wide ruffled edge on bulbous base, frosted glass petaled feet, notched air vents, ht. 8 in. (250/350) **Selling Price \$225**

024. ROSE MOTHER-OF-PEARL SATIN GLASS LAMP WITH FOLDED MATCHING BASE, late 19th century, crimped top on tulip shade with vertical

stripes, (crack), ht. 5 in. (200/300)
Selling Price \$110

025. BLUE RUFFLED SATIN GLASS SHADE ON CORRESPONDING BASE, late 19th century, notched air vents, (chips), ht. 4 1/2 in. (75/125)
Selling Price \$80



026. PINK MOTHER-OF-PEARL SATIN GLASS LAMP WITH MATCHING BASE, late 19th century, flared, scalloped top on diamond quilted shade and footed base, clear glass candle cups, (some chips), ht. 6 in. (200/300)
Selling Price \$80

027. PAIR OF FORMAL TABLE CRICKLITES INCORPORATING NOSEGAYS, late 19th century, clear glass shade, pressed glass insert and holder on blown glass standard and base centered by matching bud vases in brass holders, with handmade modern shades, (minor chips), ht. 19 in. (300/500) **Selling Price \$275**

028. BLUE FEATHERED NAILSEA-TYPE FAIRY LAMP WITH RUFFLED BASE, late 19th century, diagonally ribbed and scalloped on acid-etched shade, Clarke clear base in mottled swirl dish with flared ruffled rim, dish signed Clarke's patent "Fairy", (chip, some imperfections), ht. 6 in. (100/200)
Selling Price \$80

029. BLUE SWIRLED, RUFFLED SATIN GLASS LAMP WITH MATCHING

BASE, late 19th century, ruffled shade, clear candle cup, square ruffled dish base, (some minor chips), ht. 7 1/2 in. Literature: 19th Century Fairy Lamps by T. Robert Anthony, plate 4. (250/350) **Selling Price \$110**

030. AMBER SATIN GLASS FAIRY LAMP WITH MATCHING BASE, late 19th century, beige enameled dogwood spray, amber candle cup, (minor chips), ht. 4 1/2 in. (75/125) **Selling Price \$45**

031. PINK ENAMELED SATIN GLASS LAMP WITH MATCHING BASE, late 19th century, domical shade with beige floral decoration fitting into glass candle cup, raised base with ruffled rim over floral band and square fluted dish, scalloped air vents, (some chips), ht. 7 1/2, dia. 6 in. (75/125) **Selling Price \$160**

032. BLUE ENAMELED SATIN GLASS WITH CASED, FLUTED BASE, late 19th century, white floral decoration on shade fitting into clear glass lamp and blue base, scalloped air vents, (some chips and roughness), ht. 5 1/2 in. Literature: 19th Century Fairy Lamps, by T. Robert Anthony, plate 12. (100/200) **Selling Price \$70**

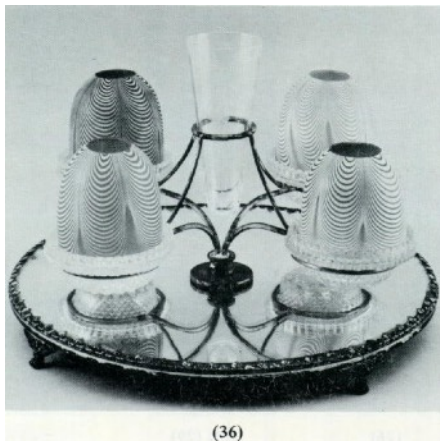
033. BLUE ENAMELED SATIN GLASS FAIRY LAMP WITH MATCHING BASE, late 19th century, floral decoration, (minor chips), ht. 4 1/4 in. (50/100) **Selling Price \$60**

034. TWO ENAMELED GLASS FAIRY LAMPS WITH MATCHING BASES, late 19th century, floral design on one green and one blue, notched air vents, (some roughness), ht. 5 in. Literature: 19th Century Fairy Lamps, by T. Robert

Anthony, plate 7. (100/150) **Selling Price \$120**

035. ENAMELED PINK SATIN GLASS LAMP ON RUFFLED DISH, late 19th century, acid-finished dome in matching cup, notched air vents, (repaired), ht. 5 in. (200/250) **Selling Price \$70**

036. FOUR LIGHT ROSE VERRE MOIRE (NAILSEA) EPERGNE WITH MIRRORED PLATEAU, late 19th century, clear conical vase centered by four fairy lamps on brass frame, (central vase Iorio replacement, some chips), ht. 10, dia. 14 in. (300/500) **Selling Price \$325**



037. ROSE VERRE MOIRE (NAILSEA) FAIRY LAMP WITH MATCHING RUFFLED BASE, late 19th century, clear glass candle cup marked "U.S. Patent, Nov. 9th, 1886" and liner marked Clarke's, ht. 5 1/4 in. Literature: 19th Century Fairy Lamps, by T. Robert Anthony, 1969, plate 2, (300/400) **Selling Price \$325**

038. BLUE VERRE MOIRE (NAILSEA) HANGING LIGHT, late 19th century, style no. 131 in reprint of Samuel Clarke's patent "Fairy" Lamps, 1887, blue shade in clear peg cup, base with turned down ruffled rim on shallow

form tapering to double drop in darker blue, presented in trifold cast metal base, no chain, ht. 10 1/4, dia. 8 in. (250/350) **Selling Price \$275**

039. ROSE VERRE MOIRE (NAILSEA) FAIRY LAMP WITH MATCHING RUFFLED BASE, England, late 19th century, clear glass candle cup and finer, both marked Clarke, (minor chips), ht. 5 1/2 in. Literature: 19th Century Fairy Lamps, by T. Robert Anthony, 1969, plate 2. (200/300) **Selling Price \$190**

040. GREEN VERRE MOIRE (NAILSEA) SHADE ON CLEAR PRESSED GLASS CANDLESTICK, late 19th century, Clarke's Cricklite peg base, both pressed in diamond point, candlestick signed Baccarat, (minor chips), ht. 12 in. Literature: 19th Century Fairy Lamps by T. Robert Anthony, plate 9. (50/100) **Selling Price \$100**

041. BURMESE SHADE ON DOULTON BURSLEM BASE, England, late 19th century, shade fitting into petaled holder attached to ceramic tray with floral decoration, glass finer, base signed S. Clarke's Fairy patent trademark, Doulton Burslem, ht. 5 1/4, dia. 6 in. (150/250) **Selling Price \$250**



042. BURMESE FAIRY LAMP WITH CLEAR PRESSED DIAMOND POINT

- BASE, England, late 19th century, clear candle cup, base marked Clarke's, (some chips), ht. 5 in. (125/175) **Selling Price \$140**
043. CASED BLUE-GREEN SWIRL PYRAMID WITH VERTICAL RIBS, late 19th century, clear pressed glass, Eden Light base, ht. 3 1/2 in. (100/125) **Selling Price \$50**
044. BLUE RIBBED SPATTER GLASS PYRAMID ON MATCHING BASE WITH CLEAR PETALS, late 19th century, ht. 3 3/4 in. (150/200) **Selling Price \$90**
045. CASED GLASS BLUE "THORNE" PYRAMID ON CLEAR RUFFLED DISH, late 19th century, clear candle cup, threaded clear dish, (some chips), ht. 5 in. (50/100) **Selling Price \$85**
046. WEBB BURMESE LAMP WITH VELVET MIRRORED STAND, England, late 19th century, pyramid size berry decoration on shade fitting into glass cup, beaded frame on three ormolu arms, beveled mirror and green base, cup pressed with S. Clarke fairy pyramid, (some chips), ht. 7 3/8 in. (150/200) **Selling Price \$200**
047. FOUR LIGHT CLEAR DIAMOND POINT EPERGNE WITH MIRRORED PLATEAU, late 19th century, clear etched vase centered by four fairy lamps on brass frame, floral cast edge on base, and FIFTH MATCHING LIGHT, replaced vase, (some chips, some casting missing), ht. 10, dia. 12 in. (300/500) **Selling Price \$125**
048. BLUE PRESSED GLASS PYRAMID ON MIRRORED PLUSH BASE, late 19th century, swirl pattern, three ormolu branches holding beaded frame, (glass cup chipped), ht. 7 in. (75/125) **Selling Price \$55**
049. THREE DIAMOND POINT PYRAMIDS ON CLEAR BASES, one lavender and two blue green, three bases marked "Clarke Fairy Pyramid" one base marked "Made in Germany Glass", hts. 3 3/4 in. (100/150) **Selling Price \$60**
050. ROSE MOTHER-OF-PEARL SATIN GLASS LAMP WITH MATCHING BASE, late 19th century, diamond quilted pattern, (some chips), ht. 5 in. (125/175) **Selling Price \$70**
051. WEBB DECORATED BURMESE LAMP WITH RUFFLED BASE, England, late 19th century, ivy design on dome, candle cup, petaled clear liner in ruffled base painted with pine cones, finer signed S. Clarke's Fairy, ht. 5 1/2, dia. 7 1/2 in. (350/450) **Selling Price \$400**
052. BURMESE FAIRY LAMP WITH RUFFLED PEACHBLOW BASE, England, late 19th century, clear pressed glass liner marked Clarke's Cricklite, (possible kiln crack, bruise, liner crack). (125/175) **Selling Price \$80**
053. BURMESE FAIRY LAMP ON TRIFID BRASS STAND, late 19th century, clear glass, candle cup in frosted blue glass, (minor chips), ht. 5 1/4 in. (100/200) **Selling Price \$110**
054. BURMESE PYRAMID LAMP ON SILVER PLATED CANDLESTICK, possibly Sheffield, England, late 19th century, clear pressed glass diamond point, pegged base marked Clarke's,

ribbed standard to square foot, (minor chip to glass base), ht. 9 5/8 in. (100/200) **Selling Price \$50**

055. CASED PEACOCK BLUE SATIN GLASS FAIRY LAMP WITH CLEAR PRESSED GLASS BASE, 19th century, clear cup base signed Clarke, (slight chips, cup and base cracked). (75/100) **Selling Price \$50**

056. FORMAL DINING ROOM CRICKLITE CENTERPIECE, England, late 19th century, clear Cricklite shade centered by six matching shades on brass radiating arms, cast brass Corinthian capitol on tall faceted crystal standard with square stepped base, frame and shades signed Cricklite, (some chips and cracks in shade), ht. 33, dia. 21 in. Literature: 19th Century Fairy Lamps by T. Robert Anthony, plate 15. (600/800) **Selling Price \$425**



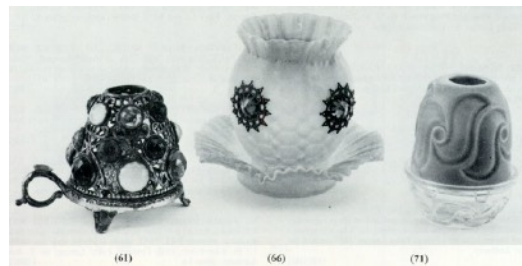
057. THREE LIGHT JEWELLED BRASS CANDELABRUM, possibly France, late 19th century, three glass inserts, leaf shaped sockets, baluster standard, convex molded foot, paste jewels, (crack, mold imperfection), ht. 7 3/4 in. (50/100) **Selling Price \$10**

058. CRANBERRY OVERSHOT FAIRY LAMP ON PEDESTAL BASE, late 19th century, cylindrical standard with brass dish base, (some chips), ht. 8 1/2 in. (100/200) **Selling Price \$70**

059. OVERSIZED PINK STRIPED SHADE ON TWO PART CLEAR GLASS FOOD WARMER, late 19th century, frosted shade, ht. 9 1/4 in. (100/150) **Selling Price \$80**

060. GLOSSY PINK CASED GLASS PYRAMID ON BRASS CANDLESTICK, deep pegged candle cup in diamond cut pattern, (some minor chips), ht. 10 in. (100/150) **Selling Price \$80**

061. JEWELLED CAST BRASS FAIRY LAMP, late 19th century, clear glass "wee-fairy" candle cup, matching brass handled base, (minor chips to cup), ht. 4 in. (50/75) **Selling Price \$100**



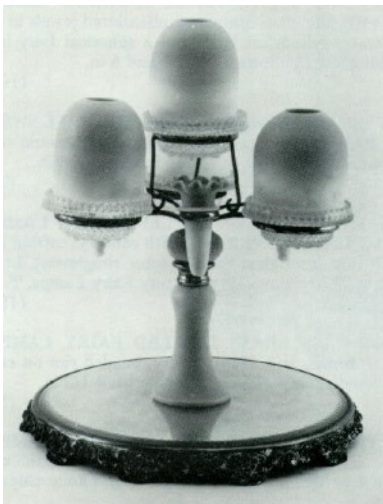
062. BRASS EWER SHAPED CANDLE LAMP WITH UNDERTRAY, pierced ewer with paste jewels, removable bottom, glass cup, round Chinese tray with reticulated edge, ht. 10 1/4 in. (75/100) **Selling Price \$55**

063. CAST BRASS JEWELLED PYRAMID ON HANDLED BASE, late 19th century, ht. 3 3/4 in. (50/100) **Selling Price \$25**
064. BRASS AND PASTE JEWEL HANGING LAMP AND FAIRY LAMP, late 19th century, multicolored jewels in pierced repousse brass, cylindrical lamp and a spherical fairy lamp on non-matching low candle sticks, hts. 7 and 6 in. (100/150) **Selling Price \$60**
065. CAST BRASS JEWELLED LAMP ON FREE-SWINGING SQUARE PAN, late 19th century, cylindrical pyramid size light on two arms, square fluted pan, loop handle, ht. 4 in. (75/100) **Selling Price \$35**
066. PINK SATIN GLASS JEWELLED FAIRY LAMP AND MATCHING UNDERLINER, late 19th century, ruffled bulbous shade with four inset glass jewels, (some roughness), ht. 5 1/2, dia. 6 1/2 in. Literature: 19th Century Fairy Lamps, T. Robert Anthony, plate 6. (150/250) **Selling Price \$150**
067. LARGE CAST BRASS JEWELLED FAIRY LAMP WITH HANDLED BASE, late 19th century, beaded rim on cast base with loop handle, clear glass candle cup, ht. 4 1/2 in. (50/100) **Selling Price \$25**
068. RIBBED WHITE CASED GLASS FAIRY LAMP WITH YELLOW HORIZONTAL THREADS, late 19th century, acid-finished ruffled base, clear candle cup, (some chips), ht. 4 1/4 in. (100/150) **Selling Price \$50**
069. WHITE RIBBED FAIRY LAMP WITH HORIZONTAL RED THREADING, late 19th century, ribbed and striped base, clear candle cup marked US Patent Nov. 9 1886, (some chips), ht. 5 1/4 in. (150/200) **Selling Price \$140**
070. STEVENS & WILLIAMS GREEN MOTHER-OF-PEARL SATIN GLASS LAMP, late 19th century, cased crimped top on swirled shade, clear candle cup and pressed glass base, both cup and base impressed U.S. Patent Nov. 9 1886, S. Clarke patent Fairy, (minor chip and roughness), ht. 5 in. Literature: 19th Century Fairy Lamps, by T. Robert Anthony, plate 8. (200/300) **Selling Price \$210**
071. ROSE MOLDED SATIN GLASS FAIRY LAMP, 19th century, impressed swirls on thick shade with clear glass matching base, ht. 4 3/4 in. Literature: 19th Century Fairy Lamps by T. Robert Anthony, plate 9. (100/150) **Selling Price \$170**
072. PINK CASED SATIN GLASS FAIRY LAMP WITH RUFFLED DISH BASE, late 19th century, Clarke's Liner pressed glass, ht. 6 1/2, dia. 7 in. Literature: 19th Century Fairy Lamps, by T. Robert Anthony, plate 2. (250/350) **Selling Price \$150**
073. BLUE MOLDED CASED GLASS FAIRY LAMP WITH CLEAR BASE, late 19th century, raised arched rib in repeating pattern, Cricklite base, (some minor chips), ht. 5 in. Literature: Reprint of Samuel Clarke's Patent Fairy Lamps, 1887, edited by T. Robert Anthony. (50/100) **Selling Price \$40**

074. STEVENS & WILLIAMS YELLOW MOTHER-OF-PEARL SATIN GLASS LAMP WITH CLEAR BASE, England, late 19th century, cased, crimped top on shade with swirl pattern, base signed US Patent Nov. 9 1886 S. Clarke patent Fairy, ht. 5 in. Literature: 19th Century Fairy Lamps, by T. Robert Anthony, plate 8. (150/200) **Selling Price \$175**

075. BLUE MOLDED CASED SATIN GLASS LAMP ON CLEAR PRESSED BASE, England, late 19th century, shade in drape pattern, signed "A" 39136 trademark Fairy, (minor chips), ht. 4 3/4 in. (100/150) **Selling Price \$60**

076. BURMESE GLASS EPERGNE ON MIRRORED PLATEAU, late 19th century, four domes with pressed glass liners alternating with three nosegay vases, metal frame fits into small burmese collar on standard flaring towards base, cups signed trademark Cricklite Clarke's, (repair to collar, some chips), ht. 16, dia. 12 in. Literature: 19th Century Fairy Lamps by T. Robert Anthony, plate 5, no. 12. (1000/1200) **Selling Price \$800**



(76)

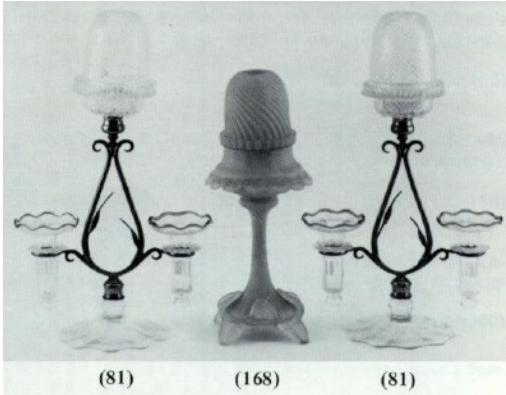
077. PAIR OF CRICKLITES WITH FRINGED SHADES AND CLEAR GLASS CANDLESTICKS BASES, late 19th century, brass and silk shades squared candlestick with impressed rose vines, possibly Cambridge Ohio Glass, shade fitting signed Cricklite, (some chips), ht. 14 in. (100/125) **Selling Price \$65**

078. BLUE MOTHER-OF-PEARL SATIN GLASS SHADE ON PARIAN FIGURAL BASE, late 19th century, cased, raindrop pattern, columnar standard incorporating full figured woman, base signed registered Germany, (repaired). Literature: 19th Century Fairy Lamps, by T. Robert Anthony, plate 1. (150/200) **Selling Price \$70**

079. PAINTED BISQUE MODEL OF ROBERT BURN'S COTTAGE, England, late 19th century, stamped, Model of Burns Cottage, W. H. Goss, (with Falcon), prior to 1891, ht. 3 3/8, lg. 6 in. (150/200) **Selling Price \$80**

080. LALIQUE-TYPE OPALESCENT PRESSED GLASS OSTRICH, probably France, late 19th century, open backed, ht. 6 1/4 in. (150/200) **Selling Price \$45**

081. PAIR OF CRICKLITE BRASS AND GLASS TABLE LAMPS, late 19th century, clear diamond point fairy light and pegged cup on scrolled brass frame incorporating two flower holders with green trim, fluted glass foot, ht. 16, wd. 9 3/4 in. (400/600) **Selling Price \$350**



082. AMBER DIAMOND POINT SHADE ON CAST METAL FIGURAL BASE, late 19th century, gilt cherubic figure holding up lamp, marked L&L 7652, shade is Clarke style no. 1889, ht. 12 in. Literature: 19th Century Fairy Lamps, by T. Robert Anthony, plate 16. (100/150) **Selling Price \$80**

083. CLARKE BRASS "ALBANY" LIGHT WITH GLASS SHADE, England, 19th century, cylindrical holder with cast leaf base, impressed Clarke's Patent Albany Elastic Glass Holder, ht. 10 in. (100/150) **Selling Price \$25**

084. PAIR OF BRASS CANDLESTICKS WITH FROSTED SHADES, late 19th century, bulbous shades with Roman key design on slender standards and disc foot, (some wear, chips), ht. 10 1/2 in. (100/150) **Selling Price \$25**

085. BLUE OPALESCENT BRISTOL-TYPE LAMP WITH RUFFLED BASE, late 19th century, ruffle on neck, floral enameling on tapering body, ruffled dish, ht. 7 in. (100/150) **Selling Price \$100**

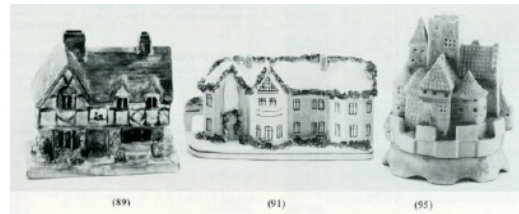
086. STAFFORDSHIRE PORCELAIN TUDOR HOUSE, England, 20th century, glass windows, polychrome decoration, stamped "Crown,

Staffordshire", ht. 5 1/4, wd. 5 3/4 in. (50/100) **Selling Price \$60**

087. SOFT PASTE COTTAGE INCENSE BURNER, probably England, 20th century, trimmed with green vegetation, green and yellow wash on cream ground, ht. 4 1/4, wd. 5 1/2 in. (50/100) **Selling Price \$50**

088. SOFT PASTE PORCELAIN MILL HOUSE, England, 20th century, polychrome decoration, ht. 4, lg. 6 1/2 in. (75/100) **Selling Price \$35**

089. SOFT PASTE PORCELAIN COTTAGE, Staffordshire, England, 20th century, central chimney with thatched roof, polychrome decoration, (some minor chips), ht. 5, wd. 4 1/2 in. (75/100) **Selling Price \$45**

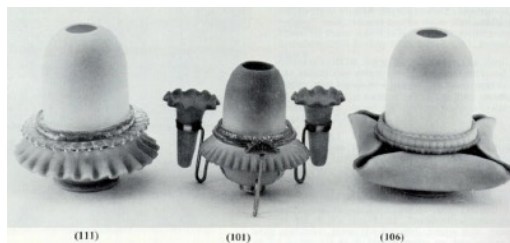


090. TWO COLORED GLASS PYRAMID LAMPS WITH CLEAR BASES, late 19th century, blue ribbed pyramid, yellow to vaseline ribbed pyramid, both bases marked Clarke, (minor chips), ht. 3 3/4 in. Literature: 19th Century Fairy Lamps, T. Robert Anthony, plate 12. (75/100) **Selling Price \$70**

091. SOFT PASTE MANOR HOUSE INCENSE BURNER, probably England, 20th century, trimmed with green vegetation on cream ground, (heat check and minor crazing), ht. 3 1/2, wd. 7 1/4 in. (50/100) **Selling Price \$20**

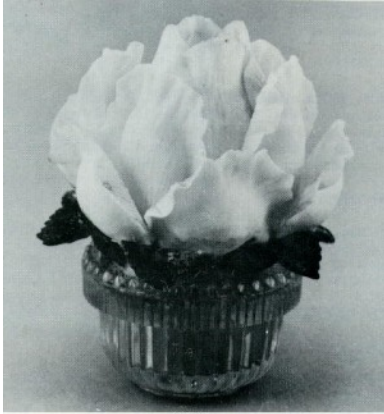
092. PAINTED SOFT PASTE TOWN BUILDING BURNER, England, 20th century, clock in center bay, ht. 4 1/2, lg. 6 1/2 in. (75/100) **Selling Price \$25**
093. CLEAR CUT GLASS FAIRY LAMP WITH MATCHING BASE, late 19th century, strawberry diamond variation, base signed Clarke, (minor chips), ht. 4 3/4 in. Literature: 19th Century Fairy lamps, by T. Robert Anthony, plate 12. (75/125) **Selling Price \$55**
094. SOFT PASTE PORCELAIN MANOR HOUSE, Staffordshire, England, 20th century, three chimneys, central front door, polychrome decoration, ht. 6, wd. 6 3/4 in. (75/100) **Selling Price \$25**
095. PAINTED PARIAN CASTLE, Germany, round turreted form, pink roofs, beige and green highlights with Clarke's porcelain candle plate, ht. 5 3/4 in. (200/250) **Selling Price \$300**
096. SOFT PASTE TURRETED CASTLE INCENSE BURNER, probably England, 20th century, trimmed with green vegetation, orange wash on cream ground, ht. 5 1/2, wd. 6 in. (50/100) **Selling Price \$20**
097. TWO BLUE AND WHITE THREADED FAIRY SHADES ON CLEAR GLASS BASES, Clarke's bases, one with insert, (crack), hts. 5 1/8 in. (75/125) **Selling Price \$55**
098. SOFT PASTE PORCELAIN COTTAGE, Staffordshire, England, 20th century, central spire with fluted roof, polychrome decoration, ht. 5 3/4, wd. 5 in. (75/100) **Selling Price \$25**
099. SMALL PAINTED BISQUE CASTLE, Germany, (heat check), ht. 5 1/2 in. (75/125) **Selling Price \$85**

101. BURMESE MENU LAMP WITH TWO NOSEGAY VASES, England, late 19th century, no. 256 in Clarke's Fairy Lamps by Dorothy Tibbets, N.D. pyramid shade quartered by vases in ormolu frame, Burmese base and finer signed S. Clarke, ht. 5, wd. 7 in. (300/400) **Selling Price \$425**



102. ORMOLU AND CUT GLASS FIGURAL LIGHT, late 19th century, pierced cover, scrolled rim, diamond cut cup on a pedestal rim with three children around the stem, square marble base, ht. 8 1/4 in (125/175) **Selling Price \$35**
103. BURMESE PYRAMID SHADE ON PAINTED PORCELAIN MENU HOLDER, England, late 19th century, style no. 277 in reprint of Samuel Clarke's Patent Fairy Lamps, 1887, bud forms on three radiating brass arms, base marked Clarke's, (incomplete), ht. 5 5/8 in. (100/150) **Selling Price \$150**
104. CASED PINK AND YELLOW SPATTER GLASS FAIRY LAMP, late 19th century, ribbed surface, clear diamond-cut pressed glass Cricklite base marked Clarke's, clear ribbed candle cup, (some chips), ht. 4 3/4 in. Literature: 19th Century Fairy Lamps, by T. Robert Anthony, 1969, plate 5. (75/100) **Selling Price \$45**
105. CASED PINK AND YELLOW SPATTER GLASS PYRAMID LAMP WITH MATCHING RUFFLED BASE,

- late 19th century, matching candle cup, clear glass petal feet, (broken bubble in cup casing, minor chips), ht. 5 3/8 in. (100/150) **Selling Price \$80**
106. QUEENS BURMESE WARE FAIRY LAMP AND MATCHING BASE, England, late 19th century, similar to no. 140 in reprint, Samuel Clarke's New Fairy Lights, plain shade pressed Burmese finer in base with four folded sides, liner signed Clarke and labeled "American Patent Nov. 9 1886 352, 296", base signed Queens -Burmese ware, ht. 6 1/8, dia. 6 in. Literature: 19th Century Fairy Lamps by T. Robert Anthony, plate 8. (600/800) **Selling Price \$425**
107. HAND PAINTED BURMESE FAIRY LAMP WITH PRESSED BURMESE BASE, possibly Webb, England, late 19th century, shade decorated with grape leaves, base marked Clarke's, (minor base chips), ht. 5 in. (200/250) **Selling Price \$300**
108. MILLEFIORI FAIRY LAMP ON RAISED BASE, Italy, spherical shade fitting into clear candle cup, elongated matching base swelling toward foot, predominantly blue multi-color, (minor chips on cup), ht. 10 7/8 in. (100/200) **Selling Price \$125**
109. JEWELLED CLEAR GLASS PYRAMID LAMP ON MOLDED PORCELAIN PEDESTAL, pressed glass with multi-colored jewels, baluster shaped base with green relief trees, Jewel missing, minor chips), ht. 10 1/4 in. Literature: 19th Century Fairy Lamps, by T. Robert Anthony, plate 4. (75/125) **Selling Price \$50**
110. BURMESE PYRAMID SHADE ON HANDLED RETICULATED TIN BASE, England, late 19th century, porcelain candle cup marked Clarke's, (minor roughness, small hole in base). (100/150) **Selling Price \$80**
111. WEBB BURMESE FAIRY LAMP WITH MATCHING RUFFLED BASE, England, late 19th century, plain shade and Clarke clear insert in folded ruffle base, made for Samuel Clarke by Thomas Webb & Sons, signed, ht. 6 1/4, dia. 5 1/2 in. (300/400) **Selling Price \$425**
112. GLOSSY BURMESE PYRAMID LAMP ON BRISTOL PEDESTAL BASE, England, late 19th century, clear Clarke's candle cup, enameled grape leaves on base, (minor roughness), ht. 8 1/2 in. (100/150) **Selling Price \$160**
113. BURMESE PYRAMID SHADE ON TURNED BRASS STAND, England, late 19th century, (minor edge roughness), ht. 7 3/8 in. (100/150) **Selling Price \$50**
114. CRANBERRY AND CLEAR GLASS FLORAL PYRAMID, late 19th century, clear petals forming a bud, clear cup fitting into ruffled, fluted collar, ht. 4 1/4 in. (100/200) **Selling Price \$110**
115. CLEAR PETAILED FLORAL PYRAMID WITH RAIN-BOW GLASS CENTER, late 19th century, clear Clarke's base, (some minor chips), ht. 3 1/2 in. (100/150) **Selling Price \$35**
116. PALE PINK PARIAN ROSE LIGHT, late 19th century, clear pressed glass cup, ht. 3 3/4 in. (100/200) **Selling Price \$160**

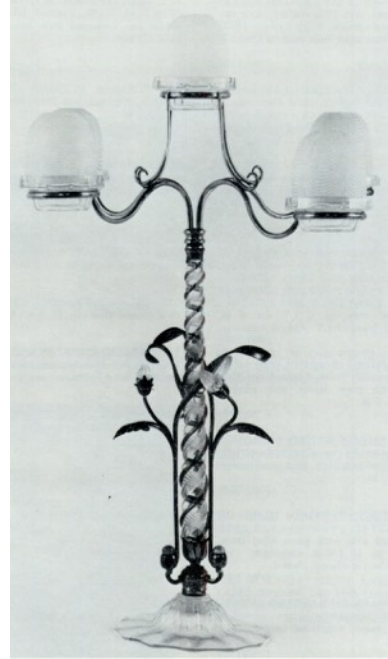


(116)

117. MAGENTA PARIAN ROSE LIGHT WITH PINK HIGHLIGHTS, late 19th century, clear pressed glass cup, some petals damaged, ht. 3 3/4 in. (40/60)

Selling Price \$65

118. FORMAL DINING ROOM CRICKLITE CENTERPIECE, England, late 19th century, epergne with citron verre moiré (nailsea) shade centered by four matching shades on brass radiating arms, twisted clear glass standard with applied green thread incorporating brass mounting of three floral stems with clear buds, raised clear foot with rib accents, clear glass bases, brass frame signed Cricklite, (some minor chips), ht. 29 3/4, dia. 16 1/2 in. Literature: Back cover of 19th Century Fairy Lamps by T. Robert Anthony. (1000/1500) **Selling Price \$600**

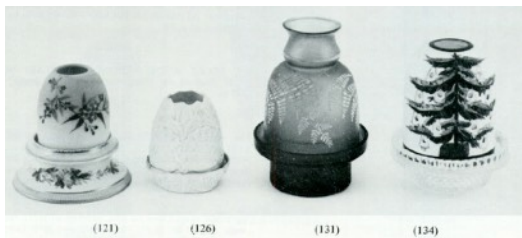


(118)

119. PINK AND CLEAR GLASS FLORAL PYRAMID, late 19th century, clear petals on pink forming a bud, clear cup fitting into ruffled pink collar, (crack in cup), ht. 4 in. (100/200) **Selling Price \$50**

120. CLEAR FLORAL PETALS ON CRANBERRY PYRAMID, late 19th century, pressed, sectioned base, (chips), ht. 4 in. (50/100) **Selling Price \$30**

121. DECORATED BURMESE FAIRY PYRAMID LAMP WITH STAFFORDSHIRE BASE, England, late 19th century, hand painted with berry and floral fronds, made for Clarke by Taylor, Tunnicliffe & Co., (minor chips), ht. 4 in. (200/250) **Selling Price \$300**



122. ROSE VERRE MOIRE (NAILSEA) FAIRY LAMP, England, clear glass cup in deep base with notched and faceted detail, cup signed "S. Clarke, Fairy", (minor chip in shade), ht. 6 1/4 in. (100/150) **Selling Price \$90**
123. BURMESE PYRAMID LAMP WITH DECORATED STAFFORDSHIRE BASE, England, late 19th century, base hand painted with gilt leaves, made for Clarke by Taylor, Tunnicliffe & Co., ht. 4 1/8 in. (125/175) **Selling Price \$190**
124. BURMESE PYRAMID SHADE ON GILT MOLDED POTTERY BASE, England, late 19th century, base made for Clarke's in Germany, (some wear), ht. 4 in. (100/150) **Selling Price \$50**
125. DECORATED BURMESE PYRAMID LAMP WITH STAFFORDSHIRE BASE, England, late 19th century, shade hand painted with grape leaves, pink base on cream with gilt accents, made for Clarke by Taylor, Tunnicliffe & Co., (base chip), ht. 4 in. Literature: 19th Century Fairy Lamps, by T. Robert Anthony, 1969, plate 13. (200/300) **Selling Price \$140**
126. PINK PORCELAIN FAIRY PYRAMID LAMP, late 19th century, molded shell pattern, matching base, (kiln crack), ht. 3 in. Literature: 19th Century Fairy Lamps by T. Robert Anthony, plate 9. (100/150) **Selling Price \$55**

127. BURMESE PYRAMID SHADE ON RETICULATED BRASS STAND, late 19th century, ht. 5 in. (75/125) **Selling Price \$100**
128. WHITE VERRE MOIRE (NAILSEA) FAIRY LAMP ON MATCHING RUFFLED BASE, England, with clear glass candle cup marked "Clarke's Fairy", (minor chipping), ht. S, dia. 6 1/2 in **Selling Price \$150**
129. CASED MAROON AND YELLOW END-OF-THE-DAY GLASS FAIRY LAMP, late 19th century, swirled ribbed surface, matching base, clear glass candle cup, (minor chips), ht. 4 3/4 in. Literature: 19th Century Fairy Lamps, by T. Robert Anthony, 1969, plate 5. (100/150) **Selling Price \$50**
130. TWO TEAL BLUE DIAMOND POINT FAIRY LAMPS ON CLEAR CRICKLITE BASES, late 19th century, (some chips, crack), ht. 5 in. (50/100) **Selling Price \$55**
131. BLUE SATIN GLASS FAIRY LAMP WITH FERN DECORATION, late 19th century, matching base, clear glass candle cup, (minor chips), ht. 5 1/2 in. Literature: 19th Century Fairy Lamps by T. Robert Anthony, plate 7. (75/125) **Selling Price \$95**
132. RIBBED AMBER FAIRY LAMP IN MATCHING HANDLED BASE, early 20th century, threaded detail, swirled base, (minor chips and stress cracks), ht. 5 3/8 in. Literature: 19th Century Fairy Lamps, by T. Robert Anthony, plate 10. (75/100) **Selling Price \$55**
133. FROSTED VASELINE FAIRY LAMP WITH MATCHING HANDLED BASE, late 19th century, vertically

ribbed shade fitting into flared rim on cylindrical base with threading, applied loop handle, (some chips), ht. 5 1/4 in. Literature: 19th Century Fairy Lamps, by T. Robert Anthony, plate 10. (75/125) **Selling Price \$35**

134. BISQUE-FIRED CHRISTMAS TREE FAIRY LAMP AND CLEAR CRICKLITE BASE, Austria and England, late 19th century, hand painted relief decoration, signed "Reg. N. 146726 Made in Austria," for Clarke's, (minor chips), ht. 5 1/8 in. Literature: Ad reproduced in Clarke's Fairy Lamps by Dorothy Tibbetts, n.d., p. 10. (40/60)

Selling Price \$150

135. LOCKE & CO. PAINTED PORCELAIN NURSERY LAMP, England, ca. 1900, molded floral bud design, stamped, ht. 3 in. (75/125)

Selling Price \$25

136. WEBB & SONS BURMESE FAIRY LAMP ON DECORATED PEDESTAL BASE, England, late 19th century, plain shade and clear finer fitting into decorated ruffle on standard flaring towards foot, ht. 10 in. Literature: Featured as front cover of 19th Century Fairy Lamps by T. Robert Anthony. (600/800) **Selling Price \$600**



137. PINK STRIPED SATIN GLASS FAIRY LAMP ON MATCHING RUFFLED BASE, late 19th century, ruffled rim on shade, shaped foot on dish, notched air vents, (hairline and some chips), ht. 4 1/2 in. Literature: 19th Century Fairy Lamps by T. Robert Anthony, plate 4. (100/150) **Selling Price \$45**

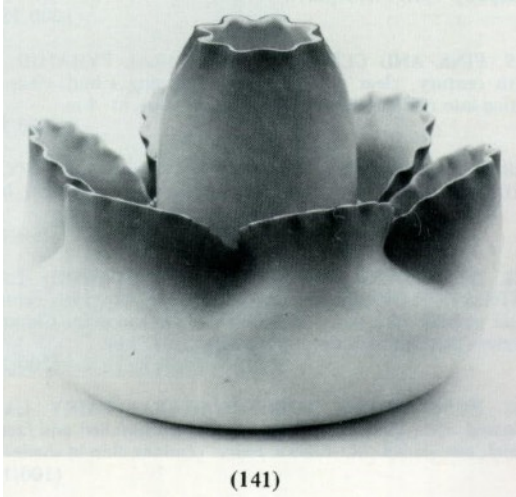
138. AMBER DIAMOND POINT PYRAMID SHADE ON MATCHING BASE, late 19th century, (some chips), ht. 3 1/2 in. (75/125) **Selling Price \$25**

139. AMBER DIAMOND POINT PYRAMID WITH CLEAR EDEN BASE, late 19th century, (some chips), ht. 3 1/2 in. (75/125) **Selling Price \$25**

140. THREE BLUE DIAMOND POINT PYRAMIDS WITH CLEAR PRESSED CLARKE BASES, late 19th century, (some chips), ht. 3 1/2 in. (100/150) **Selling Price \$60**

141. WEBB PEACHBLOW FAIRY LAMP IN MATCHING BASE, England, late 19th century, crimped shade fitting into

three piece pressed glass liner, ruffled and fluted rim on bulbous base, ht. 5 1/2, dia. 8 in. Literature: Clarke's Fairy Lamps by Dorothy Tibbetts. (500/700) **Selling Price \$550**



(141)

142. BLUE NAILSEA SHADE ON CLEAR CUT CANDLE- STICK, late 19th century, Clarke's clear peg cup, (some chips), ht. 12 in. (100/150) **Selling Price \$70**

143. BLUE VERRE MOIRE (NAILSEA) SHADE IN CLEAR CRICKLITE BASE, England, late - 19th century, clear glass candle cup marked "Clarke's Fairy" in diamond-cut glass base marked "Clarke's Cricklite", (minor chipping), ht. 4 1/2 in. (75/125) **Selling Price \$65**

144. PEACHBLOW FAIRY LAMP, in peachblow basket, possibly Webb, England, late 19th century, ruffled rim in a cased shade, clear pressed glass wide dish base and candle cup, both marked Clarke's, ruffled basket of different origin, ht. 6 3/4 in. (200/250) **Selling Price \$170**

145. IORIO MATCHING THREE PIECE FAIRY LAMP, Flemington, N.J., 1974,

rust drape pattern on transparent glass, shade, base and underplate signed "Iorio Furnaces, Ric Iorio, 12 of 900 pieces, 1974", ht. 5 3/4 in, (75/125) **Selling Price \$35**

146. MEISSEN LITHOPHANE AND PORCELAIN FAIRY LAMP, Germany, late 19th century, paneled shade on cup with dish base, in onion pattern, white porcelain candle cup, ht. 6 in. Literature: 19th Century Fairy Lamps, T. Robert Anthony, plate 7. (400/500) **Selling Price \$500**

147. TWO IORIO RAINBOW FAIRY LAMPS, Flemington, N.J., 1981, one acid-finished, one clear, both with matching bases, one signed Ric Iorio / 1-81, ht. 5 in. (75/125) **Selling Price \$65**



(146)

(147)

(148)

148. ROUND BRASS LAMP WITH FOUR Lithophane PANELS, probably Germany, late 19th century, domed cover on cylindrical form with cast frame, ht. 6 1/4, dia. 6 in. (200/300) **Selling Price \$50**

149. IORIO FEATHERED RED, TAN AND BROWN FAIRY LAMP WITH MATCHING BASE, Flemington, N.J., 1975, signed Iorio Furnaces, 12-75 99, Ric Iorio, ht. 4 3/4 in. (50/100) **Selling Price \$25**

150. TWO IORIO DURAND-TYPE FAIRY LAMPS, Flemington, N.J., 1975, one

- with blue and green swirl, one with blue and feathered purple clear bases, both signed Iorio Furnaces Ric Iorio /1-75, ht. 5 in. (75/125) **Selling Price \$55**
151. COLORED LITHOGRAPH LAMP WITH PLATED CANDLE HOLDER, probably Germany, late 19th century, angled shoulder on tapering form with country scenes, ht. 7 1/2 in. Literature: 19th Century Fairy Lamps by T. Robert Anthony, plate 4. (200/300) **Selling Price \$175**
152. TWO IORIO SWIRL FAIRY LAMPS WITH CLEAR BASES, Flemington, N.J., 1975, one with brown and green feathering, one Durand-type with blue and green, both signed Iorio Furnaces Ric Iorio /1-75 56, /1-75 1, ht. 5 in. (75/125) **Selling Price \$35**
153. EGG-SHAPED LITHOPHANE SHADE ON CLARKE CLEAR BASE, late 19th century, (kiln crack), ht. 4 1/2 in. Literature: 19th Century Fairy Lamps, by T. Robert Anthony, plate 7. (250/350) **Selling Price \$60**
154. CONICAL LITHOPHANE SHADE ON PRESSED GLASS TALL BASE, Germany, five panels on wide shade tapering to standard, clear base with cane pattern, milk glass candle cup, (base probably of different origin), ht. 8, dia. 5 in. (150/200) **Selling Price pass**
155. TWO IORIO QUEZAL AND DURAND-TYPE LAMPS, Flemington, N.J., 1975, feathered lavender and blue, clear bases, shades signed Iorio Furnaces, ht. 5 1/8 in. (75/125) **Selling Price \$25**
156. LITHOPHANE AND PORCELAIN NURSERY FAIRY LAMP, probably Germany, late 19th century, gilt detail, two panel scenes of "Little Miss Muffet", porcelain base, ht. 4 1/2 in. Literature: 19th Century Fairy Lamps, by T. Robert Anthony, 1969, plate 7. (150/200) **Selling Price \$200**
157. CAST BRASS TABLE CLOCK WITH TRANSLUCENT DIAL, late 19th century, illuminated by candlelight, marked PATENT, (incomplete), ht. 8 1/2, wd. 6 1/4 in. (150/250) **Selling Price \$110**
158. CRICKLITE FAIRY LAMP, England, late 19th century, dark rose acid-etched shade above crystal candlestick with ormolu swag fittings, clear glass peg base marked "Clarke's Cricklite", ht. 13 1/2 in. Literature: 19th Century Fairy Lamps, T. Robert Anthony, plate 3. (75/125) **Selling Price \$90**
159. TWO PAIRS OF CLEAR IORIO LAMPS ON PRESSED AND CUT PEDESTAL BASES, 20th century, with hobstar and star variations, ht. 9 1/4 in. (100/150) **Selling Price \$90**
160. TWO ACID-ETCHED PYRAMIDS ON CLEAR PRESSED GLASS PEDESTAL BASES, late 19th century, crimped top on shade, one in blue, one in rose, ht. 9 in. (75/100) **Selling Price \$20**
161. COLORED LITHOPHANE FAIRY LAMP WITH ENAMELED PORCELAIN AND BRASS STAND, probably Germany, late 19th century, three scenes depicting angels, Clarke's clear fairy candle cup and Cricklite peg base set in stand, (porcelain cracked), ht. 9 1/2 in. Literature: 19th Century Fairy Lamp, by T. Robert Anthony. (400/600) **Selling Price \$40**



162. TWO WHEEL ETCHED FAIRY LAMPS ON CLEAR GLASS CANDLESTICKS, probably lorio, New Jersey, 20th century, one lavender and one ruby flash, clear candle cup, clear peg bases, hts. 12 and 12 1/2 in. (50/100) **Selling Price \$45**

163. ROSE MOTHER-OF-PEARL SATIN GLASS PYRAMID ON MIRRORED BRASS STAND, late 19th century, diamond quilted cased glass, clear cup on turned brass pedestal and radiating star mirrored base, (some chips and imperfections), ht. 7 3/4 in. (100/200) **Selling Price \$80**

164. BLUE CUT VELVET SATIN GLASS FAIRY LAMP ON BRASS STAND, late 19th century, diamond quilted, cased white shade, Clarke base and tall trifid stand, notched air vents, (minor chips), ht. 8 1/2 in. (125/175) **Selling Price \$90**

165. PINK CASED SATIN GLASS PYRAMID LAMP ON PINK PEDESTAL BASE, late 19th century, diamond quilted shade, clear Clarke's pyramid candle cup, petal feet, (chips), ht. 9 3/4 in. (125/175) **Selling Price \$80**

166. PEACHBLOW FAIRY LAMP ON THREE LEGGED BRASS STAND, possibly Mount Washington, New

Bedford, Massachusetts, late 19th century, ruffled edge on bulbous shade, matching base, clear pyramid size candle cup, ht. 8 1/2 in. Literature: 19th Century Fairy Lamps, by T. Robert Anthony. (400/600) **Selling Price \$350**

167. BLUE VERRE MOIRE (NAILSEA) FAIRY LAMP ON CLEAR PRESSED GLASS CANDLESTICK, late 19th century, Clarke's Cricklite peg base, (imperfections), ht. /1 1/4 in. (50/100) **Selling Price \$55**

168. PINK SATIN GLASS PEDESTAL FAIRY LAMP, late 19th century, swirl ribbed, cased glass shade and cup on slender standard with frosted petal feet and leaf detail, (some base chips), ht. 13 in. Literature: 19th Century Fairy Lamps by T. Robert Anthony, plate 12. (200/300) **Selling Price \$150**

169. ROSE SATIN GLASS PEDESTAL FAIRY LAMP, late 19th century, matching swirl patterned shade and cup in pedestal base with frosted leaf detail, (small crack), ht. 13 in. Literature: 19th Century Fairy Lamps by T. Robert Anthony, plate 12. (100/200) **Selling Price \$100**

170. FROSTED AND CLEAR CYLINDRICAL SHADE ON RETICULATED SILVER PLATED BASE, late 19th century, acid-etched design, complete with snuffer, (minor chips), ht. 6 1/4 in. (100/125) **Selling Price \$75**

171. LEMON YELLOW CAMPHOR STRIPED SATIN GLASS FAIRY LAMP ON METAL STAND, late 19th century, clear Clarke's fairy candle cup, black painted three legged stand attributed to A. J. Weed & Co., New

York, ht. /1 1/8 in. Literature: 19th Century Fairy Lamps by T. Robert Anthony. (100/150) **Selling Price \$150**

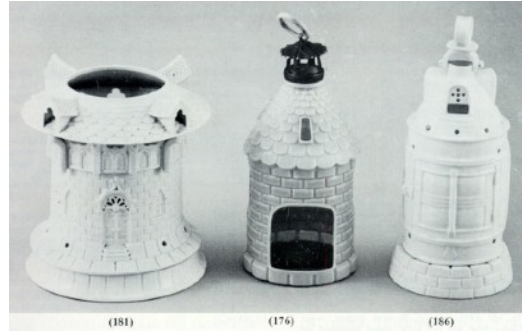
172. PAIR OF CRICKLITES WITH FRINGED SHADES AND CLEAR CANDLESTICK BASES, late 19th century, metal and pink silk shades, Cricklite globe, clear candle cup, shade fitting signed Cricklite, (minor chips, some fringe missing), hts. 12 in. (40/60) **Selling Price \$45**

173. PAIR OF CLEAR CRICKLITE LAMPS, late 19th century, pierced silver shade with beaded fringe, metal collar on clear glass shade, pressed glass pegged base on squared clear glass sticks, cup and collar marked "Clarke", (minor chips, flake), ht. 12 3/4 in. (75/125) **Selling Price \$45**

174. RIBBED CRANBERRY GLASS PYRAMID ON PEDESTAL BASE, late 19th century, clear candle cup, base flaring to clear petal feet, (some chips), ht. 9 1/4 in. (100/150) **Selling Price \$160**

175. TWO BURMESE PYRAMIDS ON CLEAR BASES, late 19th century, one Clarke base, one modern petaled base, (some minor chips), ht. 3 3/4 in. (150/250) **Selling Price \$120**

176. PINK MILK GLASS LIGHTHOUSE, France, late 19th century, brass cap on conical roof with simulated shingle and brick, remnants of a label marked, Depose Pantin Reg. 120760, ht. 7 in. Literature: 19th Century Fairy Lamps by T. Robert Anthony, plate 5. (200/300) **Selling Price \$100**



177. WHITE SWIRLED CRANBERRY SHADE ON WHITE PORCELAIN DOLPHIN BASE, 20th century, Clarke's clear glass base, (minor rim chips), ht. 8 in. (50/100) **Selling Price \$75**

178. TWO PAINTED MOLDED SOFT PASTE TURRET LIGHTS, probably Germany, clear glass candle cups, (one exposed, minor chips), ht. 9 1/2 in. (75/125) **Selling Price \$25**

179. RUBY DIAMOND POINT FAIRY LAMP WITH SILVER PLATED ELEPHANT PEDESTAL, late 19th century, clear diamond point Cricklite base, plain ruby candle cup, (minor chips), ht. 9 1/2 in. (75/100) **Selling Price \$50**

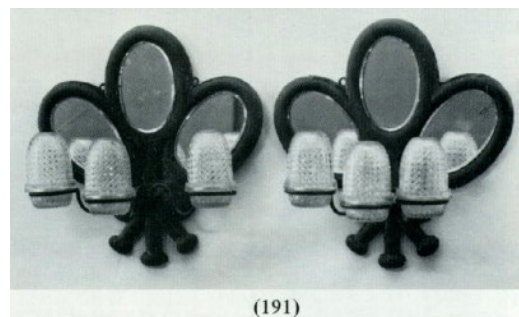
180. BLUE DIAMOND POINT FAIRY LAMP ON SILVER PLATED DOLPHIN AND SCROLL BASE, clear pressed glass base marked Clarke, (minor chips), ht. 9 7/8 in. (50/100) **Selling Price \$45**

181. PORCELAIN LITHOPHANE ROUND CASTLE AND MATCHING BASE, Germany, late 19th century, dormered roofline on cylindrical form with Gothic windows and brickwork surface, (some chips), ht. 6, dia. 5 3/4 in. (200/300) **Selling Price \$325**

182. YELLOW SPATTER GLASS
PYRAMID LAMP ON MATCHING
PEDESTAL BASE, matching finer,
clear glass dripped petal detailing,
(minor chips), ht. 9 in. (200/250)
Selling Price \$110
183. TWO CASTLE LIGHTS, 19th century,
acid-finished clear square building,
clear handled cup; fight pink to rose
satin domed ribbed building with metal
top vent, (cup cracked, pink building
repaired), hts. 6 1/2 and 7 in. (125/175)
Selling Price \$70
184. BLUE SWIRLED SATIN GLASS
SHADE ON CLEAR PRESSED AND
CUT GLASS CANDLESTICK BASE,
19th century, with peg cup, (some
chips), ht. 12 in. (75/100) **Selling Price
\$70**
185. LEMON YELLOW SATIN SWIRL
PYRAMID ON MATCHING
PEDESTAL BASE, late 19th century,
matching candle cup, (cracks), ht. 9 in.
(100/125) **Selling Price \$50**
186. COPELAND PORCELAIN LAMP IN
FORM OF A LANTERN, England, late
19th century, fits onto simulated brick
base, both signed Copeland, ht. 8 in.
(125/175) **Selling Price \$160**
187. PAIR OF CRICKLITE LAMPS,
England, ruby diamond quilted shades
in clear diamond-cut glass peg bases set
into plated metal candlesticks, glass
marked Clarke, (minor chips), ht. 13
1/4 in. Literature: 19th Century Fairy
Lamps by T. Robert Anthony, plate 14.
(75/125) **Selling Price \$50**
188. CRANBERRY CUT TO CLEAR
GLASS SHADE ON PRESSED
GLASS BASE, late 19th century,

thumbprint over diamond lattice, (some
minor nicks), ht. 5 1/4 in. Literature:
19th Century, Fairy Lamps, by T.
Robert Anthony, plate 9. (150/250)
Selling Price \$90

189. PAIR OF CRICKLITES WITH
FRINGED SILK SHADES, England,
late 19th century, lobed shades with
floral decoration and beaded fringe on
Cricklite globe, clear cup on brass
mounting and faceted crystal sticks,
signed Cricklite on silk shade and
globe, (tears in shades, some minor
chips), ht. 15 1/2 in. (250/350) **Selling
Price \$110**
190. CRANBERRY SWIRL PYRAMID ON
MATCHING BASE WITH CLEAR
LEAF DETAIL, late 19th century, clear
candle cup, notched air vents, (some
chips), ht. 4 3/4 in. (75/125) **Selling
Price \$80**
191. PAIR OF MIRRORED RED VELVET
WALL SCONCES WITH CLEAR
DIAMOND POINT LIGHTS, late 19th
century, three oval mirrors in covered
frame incorporating three brass
branches holding fairy lamps, (velvet
worn), dia. 16 in. (400/600) **Selling
Price \$225**



192. CLEAR BLUE FAIRY LAMP WITH
ACID-ETCHED FEMALE FIGURES
ON FLORAL GROUND, possibly
France, late 19th century, clear pressed

glass Clarke's base, (slight chips), ht. 4 1/2 in. Literature: 19th Century Fairy Lamps, T. Robert Anthony, plate 5. (75/100) **Selling Price \$200**

193. CRANBERRY AND GREEN OVERSHOT PYRAMID WITH CRANBERRY RUFFLE, late 19th century, ht. 3 1/2 in. (150/250) **Selling Price \$60**

194. BLUE OVERSHOT MOLDED FLAME PYRAMID ON CLEAR BASE, late 19th century, (some minor chips), ht. 4 1/2 in. (100/150) **Selling Price \$50**

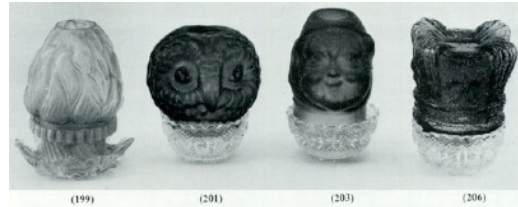
195. LIGHT PINK BLOWN MOLDED DIAMOND SHADE ON CLEAR PYRAMID BASE, late 19th century, acid-finished, (some chips), ht. 4 in. Literature: Clarke's Fairy Lamps by Dorothy Tibbetts, p. 3. (50/100) **Selling Price \$45**

196. LIGHT GREEN BLOWN MOLDED DIAMOND SHADE ON CLEAR PYRAMID BASE, late 19th century, acid-finished, (some chips, hairline), ht. 4 in. Literature: Clarke's Fairy Lamps, by Dorothy Tibbetts, p. 3. (40/60) **Selling Price \$25**

197. BLUE SATIN GLASS SHADE ON RUFFLED BASE, clear glass cup, pressed glass clear base, glossy ruffled dish, (minor chips), ht. 5 7/8 in. (50/100) **Selling Price \$65**

198. COBALT BLUE HOBNAIL PYRAMID LAMP WITH CLEAR BASE, base marked Clarke, (minor chips), ht. 3 5/8 in. Literature: 19th Century Fairy Lamps, T. Robert Anthony, plate 12. (40/60) **Selling Price \$35**

199. GREEN BLOWN-MOLDED BUD PYRAMID WITH PETALED MATCHING BASE, late 19th century, acid-etched form sectioned into leaves, cased glass base, (minor chips), ht. 4 1/2 in. (150/200) **Selling Price pass**



200. TWO CLEAR OVERSHOT PYRAMID LAMPS WITH CLEAR BASES, late 19th century, one with hexagonal, double tiered shade, one with blown molded pineapple pattern, (some chips and roughness). Literature: Clarke's Fairy Lamps, by Dorothy Tibbetts, pg. 2. (50/100) **Selling Price \$20**

201. CRANBERRY BLOWN-MOLDED TWO FACED OWL PYRAMID, late 19th century, acid-finished, clear base, (minor base chips), ht. 4 1/4 in. (150/200) **Selling Price \$60**

202. TWO DIAMOND POINT PYRAMIDS WITH RUFFLED COLLARS AND CLEAR BASES, late 19th century, one in blue, one in green, one base signed "Eden Light", ht. 3 3/4, dia. 6 in. (75/100) **Selling Price \$120**

203. CRANBERRY BLOWN MOLDED MONK'S HEAD PYRAMID, late 19th century, acid-finished, clear base, (some base chips), ht. 4 3/4 in. (100/150) **Selling Price \$35**

204. THREE BLOWN MOLDED OVERSHOT PYRAMID LAMPS, late 19th century, one blue and one clear in pineapple or berry pattern, and one in

- shell pattern, Clarke catalogue 2742/7, (crack, some chips), ht. 4 in. Literature: Clarke's Fairy Lamps, by Dorothy Tibbetts, pg. 2, 19th Century Fairy Lamps, by T. Robert Anthony, plate 3. (50/100) **Selling Price \$55**
205. CITRON VERRE MOIRE PYRAMID SHADE IN WIDE CLEAR GLASS TIERED BASE, late 19th century, base signed Clarke's, (small cracks and chips), ht. 4 in. Literature: Clarke's Fairy Lamps, by Dorothy Tibbetts, plate 1. (50/100) **Selling Price \$35**
206. RED OVERSHOT CROWN-SHAPED PYRAMID, late 19th century, pressed clear glass diamond point cup, introduced by Clarke for the Golden Jubilee of Queen Victoria, (cracked), ht. 4 1/2, wd. 3 1/4 in. Literature: Clarke's Fairy Lamps by Dorothy Tibbetts, p. 2 and p. 17. (75/125) **Selling Price \$35**
207. COBALT OVERSHOT CROWN-SHAPED PYRAMID, late 19th century, matching blue candle cup, clear base, introduced by Clarke for the Golden Jubilee of Queen Victoria, (cracks and holes), ht. 4 1/2, wd. 3 1/4 in. Literature: Clarke's Fairy Lamps by Dorothy Tibbetts, p. 2 and p. 17. (40/60) **Selling Price \$25**
208. TWO BLUE FLORAL GLASS PYRAMIDS, one with open acid-finished petals, one with clear closed petals on blue, (some minor roughness), ht. 4 in. (75/125) **Selling Price \$45**
209. MIRRORED WALL SCONCE INCORPORATING TWO LAMPS, late 19th century, similar to no. 265 in reprint of Samuel Clarke's New Fairy Lights, ca. 1887, pink and yellow cased end-of-the-day ribbed shades on two matching bases, attached to wall mount with beveled mirror, (some imperfections), ht. 8 1/4, wd. 5 3/5 in. (150/00) **Selling Price \$100**
210. TWO PYRAMID LIGHTS ON RETICULATED PLATED STANDS, one with ruby swirl shade, one with spatter glass shade, both on clear bases, (some chips), ht. 6 1/2 in. (75/100) **Selling Price \$25**
211. MOTHER-OF-PEARL CASED SATIN GLASS FAIRY LAMP WITH MATCHING BASE, England late 19th century, pyramid size, diamond quilted pattern in peacock blue with clear glass cup, (rough edge on cup), ht. 4 1/4 in. (100/200) **Selling Price \$70**
212. BLUE MOTHER-OF-PEARL SATIN GLASS FAIRY LAMP WITH RUFFLED BASE, late 19th century, ruffled edge on cased diamond quilted form fitting into footed base, notched air vents, (some chips), ht. 4 1/2 in. Literature: 19th Century Fairy Lamps, by T. Robert Anthony, plate 12. (75/100) **Selling Price \$50**
213. CASED SPATTER GLASS FAIRY LAMP WITH CLEAR BASE, late 19th century, (cracked), ht. 5 in. (50/100) **Selling Price \$20**
214. TWO RIBBED CASED SATIN GLASS PYRAMID LAMPS, England, late 19th century, one rose, the other blue, both with clear Clarke's pyramid candle cups, (some chips), ht. 3 3/4 in. (125/175) **Selling Price \$110**
215. MOTHER-OF-PEARL CASED SATIN GLASS FAIRY LAMP WITH MATCHING BASE, England, late 19th century, pyramid size, diamond quilted

pattern in peacock blue with clear glass cup, marked "S. Clarke, Fairy-Pyramid", (imperfections), ht. 4 1/4 in. (100/200) **Selling Price \$40**

216. PINK AND WHITE END-OF-THE-DAY LAMP WITH MATCHING PEDESTAL BASE, late 19th century, tall ringed shade fitting into bulbous base with shaped standard and stepped foot, floral gilt decoration, clear glass pegged candle cup, ht. 10 3/8 in. Literature: 19th Century Fairy Lamps by T. Robert Anthony, plate 2. (100/150) **Selling Price \$150**



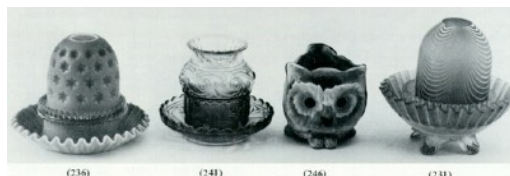
217. FLORAL PAINTED AMBER GLASS LAMP, late 19th century, vase shaped shade on bulbous footed base, matching peg candle cup, (some roughness), ht. 12 in. (100/150) **Selling Price \$80**
218. CAST IRON MINIATURE STREET LAMP LIGHT, green glass, removable roof, hook with two free swinging keys, ht. 11 1/2 in. (50/100) **Selling Price \$90**
219. SERVES PAINTED PORCELAIN TEAPOTS ON MATCHING BURNER, France, late 19th century, notched cover on bulbous form fitting into painted finer, handled cylindrical base with painted floral medallion and gift highlights on pink, signed with Sai

diamond, (some repair to cover), ht. 10 in. (100/150) **Selling Price \$80**

220. TWO MINIATURE CAST IRON STREET LAMPS, late 19th century, one with reticulated top; the other has hinged globe and black stone base, two glass candle cups, (minor chips on stone), hts. 11 1/2 and 12 3/4 in. (100/150) **Selling Price \$100**
221. PARIS PORCELAIN TEAPOT ON MATCHING BURNER, France, late 19th century, covered teapot fitting into cylindrical form with matching candle cup, painted floral band on predominantly red form with gilt highlights, ht. 8 5/8 in. (150/200) **Selling Price \$120**
222. TWO PAINTED PORCELAIN TEAPOTS ON CORRESPONDING BURNERS, probably France, late 19th and 20th century, covered squat forms fitting into cylindrical bases, one with porcelain candleholder, gilt and polychrome floral decoration, ht. 9 3/4 in. (100/150) **Selling Price \$230**
223. PALE GREEN DIAMOND CUT PYRAMID WITH MATCHING BASE, late 19th century, base signed Clarke's, ht. 4 in. (50/100) **Selling Price \$35**
224. COBALT BLUE DIAMOND POINT PYRAMID WITH MATCHING BASE, late 19th century, signed Clarke's, ht. 3 1/2 in. (50/100) **Selling Price \$35**
225. TWO PORCELAIN OWL LUMINAIRES, 20th century, both on single books, glass eyes, one marked Aroma D.R.D., hts. 4 1/2 and 6 in. (50/100) **Selling Price \$95**
226. CLARKE'S PYRAMID NURSERY LAMP FOOD WARMER, England, late

19th century, covered ironstone Pannikin set, in frame with pyramid burner, Patent No. 91241, with clear ribbed shade, together with an original candle box, (minor chip on shade), ht. 10 1/2 in. Literature: Clarke's Fairy Lamps by Dorothy Tibbetts, p. 16. (100/200) **Selling Price \$180**

ruffled dish with pad feet, base signed Clarke's patent "fairy", (some chips), ht. 6 in. (200/300) **Selling Price \$180**



227. THREE PORCELAIN TEAPOT WARMERS, French porcelain warmer with painted harbor scene, (no teapot); tapered dome over covered cup with painted pansies and plain white porcelain teapot on cylindrical burner, (minor chips), hts. 6 1/2 to 8 1/2 in. (100/200) **Selling Price \$90**
228. TWO PAINTED BISQUE PORTRAIT NURSERY LAMPS, Germany, late 19th century, a lady and a gentleman with a top hat, together with two pressed glass under plates, ht. 4 3/4 in. (100/150) **Selling Price \$125**
229. TWO PORCELAIN NIGHT LIGHTS, Europe, 19th and 20th century, the first a Copeland white simulated hive on matching base, the second a round painted cottage with orange roof and clear glass base, (kiln cracks in cottage), ht. 4 3/4 in. (75/100) **Selling Price \$85**
230. TWO PORCELAIN ANIMAL FIGURAL LUMINAIRES, 20th century, seated striped cat, seated black and white Boston terrier, glass eyes, (minor chips, dog has replaced eye), hts. 6 1/2 and 6 1/8 in. (50/75) **Selling Price \$75**
231. ROSE VERRE MOIRE (NAILSEA) FAIRY LAMP WITH MATCHING BASE, England, late 19th century, shade fitting into frosted glass finer and

232. YELLOW VERRE MOIRE (NAILSEA) SHADE ON CLEAR BASE, late 19th century, petaled base signed BR Clarke SGD G portreaux, (some chips), ht. 4 1/2 in. (100/150) **Selling Price \$60**
233. TWO PAINTED BISQUE PORTRAIT NURSERY LAMPS, Germany, late 19th century, a little boy and a nanny, glazed, ht. 3 1/2 in. (100/150) **Selling Price \$130**
234. TWO SATIN GLASS PYRAMID LAMPS, 20th century, Burmese shade with leaf decoration, yellow base; Fenton yellow shade with floral decoration signed Nancy Trebble, matching base, (minor chips), hts. 4 1/2 and 4 5/8 in. (75/125) **Selling Price \$25**
235. TWO PORCELAIN FIGURAL LUMINAIRES BURNERS, 20th century, brown bird on green base, green and pink bird, both have glass eyes, one marked Aroma, (minor chips), hts. 6 1/8 and 8 1/4 in. (75/100) **Selling Price \$45**
236. PINK CASED SATIN GLASS FAIRY LAMP WITH EMBOSSED STARS, late 19th century, candle cup, clear Clarke Cricklite base and matching ruffled saucer, (minor chips), ht. 5, dia. 6 1/4 in. Literature: 19th Century Fairy Lamps by T. Robert Anthony, plate 2. (200/250) **Selling Price \$200**

237. TWO BLUE VERRE MOIRE (NAILSEA) FAIRY LAMPS IN CLEAR BASES, late 19th century, two ribbed candle cups, bases signed Clarke, (some roughness), ht. 4 1/2 in. (150/250) **Selling Price \$140**
238. BACCARAT BLUE PRESSED GLASS FAIRY LAMP AND MATCHING PLATE BASE, France, late 19th century, swirl pattern, notched air vents, plate signed, Baccarat depose, (some chips), ht. 4 1/4, dia. 5 3/4 in. Literature: 19th Century Fairy Lamps by T. Robert Anthony, plate 14. (100/150) **Selling Price \$45**
239. PAINTED BISQUE DOG NURSERY LAMP ON BRASS BASE, Germany, late 19th century, wearing a hat, ht. 5 in. (40/60) **Selling Price \$25**
240. ROSE VERRE MOIRE (NAILSEA) SHADE ON WIDE CLEAR BASE, late 19th century, base signed S. Clarke Fairy Pyramid, (chips), ht. 3 3/4 in. (75/125) **Selling Price \$75**
241. BACCARAT PRESSED GLASS AMBERINA FAIRY LAMP, France, late 19th century, ribbed flaring top over swirled band and darker ribs, corresponding swirl base with scalloped edge, cut out air vents, (some minor chips), ht. 4 1/2, dia. 5 in. Literature: 19th Century Fairy Lamps by T. Robert Anthony, plate 14. (200/300) **Selling Price \$130**
242. BLUE SATIN GLASS FAIRY LAMP WITH MATCHING BASE, late 19th century, crimped top, clear glass candle cup and finer in corresponding base with ruffled rim, candle cup marked "US Patent Nov. 9 1886", (slight bubble), ht. 5 3/4 in. Literature: 19th Century Fairy Lamps by T. Robert Anthony, plate 2. (100/150) **Selling Price \$70**
243. TWO PORCELAIN FIGURAL PARROT LUMINAIRES, 20th century, brown bird on two books, green bird on green base, both have glass eyes, one marked Aroma, (slight chips), hts. 7 and 7 3/8 in. (75/100) **Selling Price \$85**
244. BACCARAT CLEAR GLASS FAIRY LAMP AND MATCHING UNDERLINER, France, gilt pinwheels, pressed glass swirl patterns, ht. 4 in. Literature: 19th Century Fairy Lamps, T. Robert Anthony, plate 14. (100/150) **Selling Price \$35**
245. BACCARAT PRESSED GLASS AMBERINA SHADE ON FOOTED BASE, France, late 19th century, swirl pattern, scalloped rim on compote-type base, notched air vents, ht. 5, dia. 5 1/4 in (75/125) **Selling Price \$120**
246. KPM PAINTED BISQUE THREE-FACED NURSERY LAMP, Germany, late 19th century, owl, cat and dog with glass eyes, impressed KPM in blue, ht. 4 in. (150/200) **Selling Price \$100**
247. BACCARAT AMBERINA PRESSED GLASS FAIRY LAMP, France, late 19th century, swirl pattern, dish with scalloped rim, signed Baccarat Depose, ht. 4, dia. 5 1/2 in. Literature: 19th Century Fairy Lamps by T. Robert Anthony, plate 14. (200/250) **Selling Price \$130**
248. TWO PAINTED BISQUE PORTRAIT NURSERY LAMPS, Germany, late 19th century, white cat face and brown dog, both with glass eyes, ht. 3 1/2 in. (100/150) **Selling Price \$50**

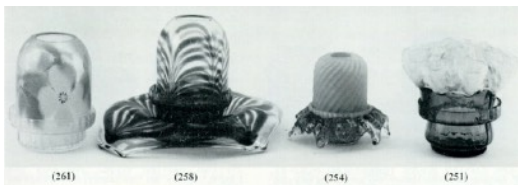
249. TWO PAINTED BISQUE PORTRAIT NURSERY LAMPS, Germany, late 19th century, a little boy and a nanny, unglazed, (some kiln cracks), ht. 3 1/2 in. (100/150) **Selling Price \$75**

250. TWO BLUE VERRE MOIRE (NAILSEA) FAIRY LAMPS ON CLEAR GLASS BASES, late 19th century, one with candle cup, both bases signed Clarke, (some chips), hts. 4 1/2 in. (100/200) **Selling Price \$90**

251. GREEN AND WHITE VENETIAN GLASS LAMP WITH PINCHED LOOP SHADE, blown glass, notched air vents, (crack, some roughness), ht. 5, dia. 5 in. Literature: Pictured in 19th Century Fairy Lamps by T. Robert Anthony, plate 4. (150/200) **Selling Price \$60**

252. TWO PAINTED BISQUE PORTRAIT NURSERY LAMPS, Germany, late 19th century, faces of a nun and monk, ht. 3 in. (100/150) **Selling Price \$75**

253. PAINTED BISQUE DOUBLE FACE MONK NURSERY LAMP, Germany, late 19th century, glass eyes, unglazed, (some chips, hairline), ht. 3 1/4 in. Literature: 19th century Fairy Lamps by T. Robert Anthony, plate 10. (40/60) **Selling Price \$35**



254. LIME GREEN RIBBED PYRAMID WITH CRANBERRY RUFFLED BASE, late 19th century, cased glass acid-finished shade, glossy base, (some chips), ht. 4 in. (125/175) **Selling Price \$55**

255. PAINTED BISQUE NURSERY LIGHT, beehive tower flanked by trees, (some color wear, minor chip), ht. 5 in. (40/60) **Selling Price \$35**

256. COLORED PANEL GLASS LANTERN, late 19th century, cracked panel, ht. 9 in. (50/100) **Selling Price \$15**

257. THREE PORCELAIN FIGURAL LIGHTS, nursery: "Peacock", "Pheasant" with jeweled bisque finish; brown baboon with luminaire glass eyes, (peacock missing jewels, pheasant repaired), hts. 3 1/8, 3 1/8 and 5 3/8 in. Literature: 19th Century Fairy Lamps, by T. Robert Anthony, plate 6. (50/100) **Selling Price \$90**

258. IORIO AMETHYST THREE-PIECE MATCHING FAIRY LAMP, lorio Furnaces, Flemington, New Jersey, 1974, purple feathered shade in ribbed candle cup and square dish with folded corners, signed, no. 11 of 300 pieces, lorio Furnaces, Ric lorio, 1974, ht. 5 1/2, wd. 8 in. (75/125) **Selling Price \$50**

259. GREEN ADVENTURINE PYRAMID ON CLEAR CLARKE BASE, late 19th century, threaded green detail, (some chips), ht. 3 3/4 in. (75/125) **Selling Price \$25**

260. BLUE ADVENTURINE PYRAMID ON CLEAR CLARKE BASE, late 19th century, blue threaded detail, (some minor chips), ht. 3 3/4 in. (75/125) **Selling Price \$35**

261. IORIO DOGWOOD PAPERWEIGHT LAMP, lorio Furnaces, Flemington, New Jersey, 1981, on opalescent ground, tinted ribbed base, base and shade signed lorio Furnaces 11/81-1,

- base signed Ric lorio, ht. 5 in.
(100/125) **Selling Price \$50**
262. RED ADVENTURINE PYRAMID ON CAST BRASS BASE, late 19th century, green threading, clear base signed Clarke, (some chips), ht. 4 1/2 in. Literature: 19th Century Fairy Lamps, by T. Robert Anthony, plate 6. (50/100) **Selling Price \$35**
263. TWO PEDESTAL BASE FAIRY LAMPS, cased pearlescent blue on matching stand and French acid-finished clear glass on matching stand, signed Desmarais & Robitaille, (minor chips), hts. 8 and 9 1/2 in. (75/125) **Selling Price \$35**
264. THREE DIAMOND POINT FAIRY LAMPS WITH CLEAR BASES, late 19th century, two in amber, one in orange, bases signed Clarke, (some chips), ht. 5 in. (100/125) **Selling Price \$80**
265. TWO FROSTED GLASS NAILSEA-TYPE FAIRY LAMPS, possibly lorio, 20th century, one in pale green, one in brown on Clarke base, (some chips), ht. 5 in. (75/125) **Selling Price \$55**
266. TWO THUMBPRINT FAIRY LAMPS WITH MATCHING BASES, late 19th century, one in blue, one in yellow, (major break, some chips), ht. 5 1/2 in. Literature: 19th Century Fairy Lamps, by T. Robert Anthony, plate 3. (75/125) **Selling Price \$45**
267. A PYRAMID AND A FAIRY LAMP, possibly late 19th century, one with enameled flowers on tinted green glass with matching base, possibly French and one with amber shade fitting into Worcester-type pottery base, bulbous form with cutout circles, (small chips), hts. 5 1/8 and 7 1/4 in. (100/150) **Selling Price \$35**
269. THREE FAIRY PYRAMID LAMPS, late 19th century, one white verre moiré (nailsea), shade on deep clear ribbed base with clear candle cup, one red verre moiré (nailsea) pressed diamond cut base, and a green ribbed aventurine shade on clear pressed diamond cut base, bases marked Clarke's, (minor chipping), ht. 4 in. (150/200) **Selling Price \$120**
270. TWO IORTO SPATTER GLASS LAMPS WITH CLEAR CLARKE BASES, 20th century, (some chips), ht. 5 1/4 in. (75/125) **Selling Price \$35**
271. FOUR IORIO CLEAR GLASS LAMPS WITH LOOP DESIGN, Flemington, N.J., 1975, white, cranberry, cobalt and green, (possibly of different origin), three signed lorio furnaces '75, ht. 4 3/4 in. (150/200) **Selling Price \$60**
272. THREE MOTHER-OF-PEARL SATIN GLASS PYRAMID LAMPS WITH CLEAR BASES, late 19th century, one white, one yellow in diamond quilted pattern with clear daisies base and one rose with matching satin glass base, (some lot damage), ht. 4 in. (100/150) **Selling Price \$90**
273. TWO JEWELLED FAIRY LAMPS, 19th century, fairy lamp with four jeweled crosses on pink overshot ground, a yellow green cased satin glass shade with four jewels, clear Clarke's base, (porcelain base damaged, cross shade missing jewels), hts. 4 and 4 1/4 in. Literature: 19th Century Fairy Lamps,

- by T. Robert Anthony, plate I 1.
(75/100) **Selling Price \$65**
274. PALE GREEN VERRE MOIRE (NAILSEA) FAIRY LAMP, late 19th century, clear ribbed glass base marked "America Patent Nov. 9, 1886", (minor chips), ht. 5 in. (100/150) **Selling Price \$35**
275. FOUR BOHEMIAN AND MARY GREGORY-TYPE RUBY FLASHED LAMPS, 20th century, two larger lamps with matching bases, made in Czechoslovakia, a Fenton glass pyramid with applied sparkle decoration and a simple ruby pyramid with matching cup and base, three with labels, (small chips), hts. 4 to 5 in. (75/125) **Selling Price \$60**
276. AMBER PRESSED GLASS FAIRY LAMP AND AMBER PYRAMID LAMP ON IRONSTONE BASE, fairy lamp in silver plated handled basket; pyramid lamp on brass standard on round base, (minor chips, metal prongs missing), hts. 6 and 7 in. (50/100) **Selling Price \$35**
277. TWO RUBY PRESSED GLASS PYRAMID LAMPS WITH CLEAR BASES AND FRILLED COLLARS, opalescent ruffle with cranberry edge, one clear with cranberry frill, (minor chips, collar repaired), hts. 3 1/2 and 4 in. (75/125) **Selling Price \$35**
278. THREE PYRAMID LAMPS, late 19th century, clear light with matching footed base in check and circle pattern, two diamond point lights in amber and ruby Clarke bases, ht. 4 1/4 in. (100/200) **Selling Price \$55**
279. THREE RIBBED SATIN GLASS PYRAMIDS WITH CLEAR BASES, late 19th century, white, lime green, olive green, (some minor chips), ht. 3 5/8 in. (125/175) **Selling Price \$110**
280. THREE SWIRLED ACID-FINISHED PYRAMIDS WITH CLEAR CLARKE BASES, late 19th century, yellow, white and pink, (some chips), ht. 3 3/4 in. (100/150) **Selling Price \$100**
281. TWO COLORED GLASS PYRAMIDS WITH MATCHING BASES, late 19th century, cranberry swirl in base with applied clear glass and ribbed ice blue with separate ruffle in clear base, (some minor chips and possible grinding), ht. 5 in. (100/150) **Selling Price \$65**
282. ACID-FINISHED NAILSEA-TYPE LAMP WITH BROWN AND PINK HIGHLIGHTS. late 19th century, clear base and candle cup, ht. 5 in. (100/150) **Selling Price \$45**
283. THREE RIBBED AND SWIRLED FROSTED FAIRY LAMPS WITH MATCHING BASES, late 19th century, one clear, one clear blue, one milk glass, one candle cup, (minor chips, clear frosted base damaged, cup cracked), hts. 5 1/4 and 5 in. (100/150) **Selling Price \$60**
284. TWO TEXTURED FAIRY LAMPS ON CLEAR BASES, late 19th century, a crackled white on blue and spatter white on pink, (edge chips, pink cracked), hts. 4 3/4 and 4 1/2 in. (50/75) **Selling Price \$35**
285. TWO GREEN AMBER FAIRY SHADES ON CLEAR BASES, one base signed Clarke, (minor chips, one

- shade cracked), hts. 4 5/8 in. (40/60)
Selling Price \$20
286. BLUE DIAMOND POINT FAIRY LAMP ON MIRRORED PLATEAU, late 19th century, (chip, base assembled), ht. 9 1/2, dia. 10 in. (75/125) Selling Price \$55
287. TWO CLEAR CHRISTMAS LIGHTS OF VICTORIA AND ALBERT, 19th century, Albert tinted green, (some damage), ht. 4 in. (75/125) Selling Price \$75
288. TWO STRIPED GLASS FAIRY LAMP SHADES WITH CLEAR BASES, one ribbed white and pale orange swirl; one with pink and white vertical stripes; Cricklite base, tripod metal pedestal, (minor chips, tripod leg detached), hts. 4 1/2 and 4 3/4 in. Literature: 19th Century Fairy Lamps, by T. Robert Anthony, parts photographed in plates 4 and 9. (100/200) Selling Price \$65
289. PINK CASED GLASS PYRAMID LAMP AND OPALESCENT FAIRY LAMP WITH PINK FRILLED COLLAR, late 19th century, cased with swirled top, diamond quilted base, clear cup; opalescent with plain dome and base, (minor chips, imperfection), hts. 4 3/4 and 4 in. (100/200) Selling Price \$85
290. FIVE ASSORTED CHRISTMAS LIGHTS, 19th century, two hobnail shades and a clear inhaler, green pressed glass, blue Queen Victoria, blue Chicago, two Wee clears, two pink flashed diamond shades, Godfrey's patent inhaler, (lot damage), hts. 2 1/4 - 4 1/4 in. (75/125) Selling Price \$55
291. BLUE ACID-ETCHED CRICKLITE ON PLATED STICK AND TWO RUFFLED FAIRY LAMPS, England, late 19th century, one blue and one pink, probably Stevens and Williams, matching bases, notched air vents, (some minor chips), ht. 13 in. Literature: 19th Century Fairy Lamps, by T. Robert Anthony, plates 9, 12. (175/225) Selling Price \$100
292. THREE FAIRY LAMPS, two nailsea-types, one blue and white, one rust pyramid, both on clear pressed glass bases with petal edging and a pink quilted lamp with matching petal footed base, (quilted lamp cracked, minor chips). (100/150) Selling Price \$55
293. TWO BLOWN-MOLDED BLUE AND GREEN FAIRY LAMPS, one with elongated overlapping petals on ribbed matching base; one with diamond point pyramid in footed blue base with applied green petals, (minor chips), ht. 5 1/2 in. Literature: 19th Century Fairy Lamps, by T. Robert Anthony, plates 4 and 16. (100/150) Selling Price \$45
294. FIVE COLORED GLASS LIGHTS, 19th century, two Price's diamond point candle cups in red and amber; two blue diamond point pyramids; blue pyramid; emerald green swirl pyramid with diamond points with clear Clarke's patent bases, (slight chips), hts. 2 3/4 - 3 3/4 in. (75/125) Selling Price \$25
295. NINE CLEAR GLASS PYRAMID LAMPS, 19th century, diamond point variations, seven with Clarke's patent bases, two with saucer bases, (some damage), hts. 3 - 3 5/8 in. (75/125) Selling Price \$80

296. SIX COLORED GLASS PYRAMID LAMPS, 19th century, four amber diamond point; one plain amber; one ruby diamond point; some with colored bases, all Clarke's patent bases, (some damage), hts. 3 5/8 - 3 3/4 in. (125/150) **Selling Price \$90**
297. FIVE FAIRY LAMPS, a clear ribbed pressed shade with matching deep design and candle cup; clear striated blue molded lamp with matching base; cranberry shade with clear pressed glass Clarke base and two diamond point shades with clear Clarke bases, (base bruises, chips, small crack), approx. average ht. 5 1/2 in. (75/125) **Selling Price \$70**
298. TWO PAINTED PINK ACID-FINISHED FAIRY LAMPS, cased enameled fairy with matching base, a painted pyramid with clear diamond point glass cup and pink Bristol glass pedestal base, (minor chips). (150/200) **Selling Price \$130**
299. THREE FAIRY LAMPS, large cranberry with matching base and candle cup; blue acid-finished glass with matching base; and orange-yellow acid-finished shade on clear pressed diamond point base marked Clarke's, (minor chips). (150/200) **Selling Price \$50**
300. NINE CLEAR WHEEL ETCHED LORIO FAIRY LAMPS, Flemington, New Jersey, 20th century, a pyramid with bird, insect and floral designs, two Clarke bases, hts. 5 in. (100/200) **Selling Price \$80**
301. FOUR FAIRY LAMPS, an acid-finished cased splashed shade with rose acid-finished base; cased yellow streaked lobed shade on matching base; a clear pressed glass shade with matching handled base marked "Blue Cross Safety Candle Lamp" and an opaque white glass shade and matching base, (chips, kiln crack in base), ht. 5 1/8 in. (125/175) **Selling Price \$50**
302. SIX OVERSIZED PRESSED GLASS FAIRY LAMPS, three hobnail pattern, three diamond cross and rib pattern in red, blue, green and clear, some bases marked with cross, (chips, one shade cracked), ht. 6 1/4 in. (50/75) **Selling Price \$45**
303. A PARIAN FAIRY LAMP AND THREE PARIAN NIGHT LIGHTS, the lamp with painted jeweled flowers, a painted cat's head, a glass-eyed owl's head and a three-faced light, (dog, cat and owl) with glass eyes, (glass eye missing, kiln crack, chips), ht. 4 in. (125/150) **Selling Price \$100**
304. TWO SATIN GLASS FAIRY LAMPS, late 19th century, a painted porcelain figural base; a parian Christmas candle shade; a cased pink and rose swirled fairy lamp with matching base and a cased swirled pyramid lamp with matching liner and pedestal base, (cracks, chips, repair), ht. 8 1/2 in. (50/100) **Selling Price \$65**
305. FOUR PYRAMID LAMPS ON FOUR PRESSED GLASS PEDESTAL BASES, two with clear shades, one lavender and one ruby swirl, two probably lorio, (some chips), ht. 8 1/8 in. (100/200) **Selling Price \$70**
306. THREE YELLOW RUFFLED FAIRY LAMPS, probably late 19th century, one acid-finished lamp with matching base in thumbprint pattern, one swirled

- shade on clear base and one with overshot surface and non-matching ruffled base, (some chips), ht. 6 1/2 in. Literature: 19th Century Fairy Lamps, by T. Robert Anthony, plates 2, 9. (125/225) **Selling Price \$120**
307. TWO LAMPS ON CANDLESTICK BASES, a clear Cricklite shade on pegged base with beaded half shade, a blue satin glass crimped shade on black baluster candlestick and TWO RETICULATED METAL CRICKLITE SHADES, with beaded fringe, (some damage to shades), ht. 13 in. (75/125) **Selling Price \$45**
308. FOUR OPAQUE WHITE PYRAMIDS, late 19th century, double faced baby nursery lamp, (cracked), opalescent hobnail on metal cup base, ribbed shade on clear base and crackled shade on reticulated metal stand, (some chips, crack), ht. 5 1/2 in. (100/150) **Selling Price \$50**
309. THREE POTTERY LANTERNS AND A FAIRY LAMP, one black with pink dogwood petals marked "Carlton Ware"; one speckled; one white floral; and a PAINTED MOLDED POTTERY FAIRY LAMP marked "Capodimonte", (small glaze crack), ht. 5 1/2 in. (175/200) **Selling Price \$50**
310. PAINTED BRISTOL GLASS TULIP ON HANDLED COPPER TRAY, ht. 4 3/4 in. (75/125) **Selling Price \$25**
311. THREE FLORAL DECORATED LAMPS, molded Bristol glass lamp with handled base, Bristol glass fairy lamp with ruffled base and landscape medallion and a white satin glass fairy lamp with pink ruffled base, possibly C.W. Wright, West Virginia, ca. 1940, (some minor roughness), ht. 6 1/2 in. (150/200) **Selling Price \$100**
312. TWO PEDESTAL BASE FAIRY LAMPS AND A PORCELAIN OWL NIGHT LIGHT, clear cut glass lamp with matching base and clear candle cup, an orange painted spatter shade on clear pressed glass base, (small base cracks, minor chips), ht. 8 1/4 in. (150/200) **Selling Price \$50**
313. SEVEN ASSORTED NIGHT LIGHTS, three pottery hand lights, (one marked "For Price's Night Light"), two brass hand lamps; glass cup with etched Lord's Prayer and blue pressed glass Gouda night light, (kiln crack, minor chips.) (100/125) **Selling Price \$30**
314. FIVE PIECE MISCELLANEOUS LAMP LOT, clear glass ruffled fairy lamp, earthen pottery lamp, two English dog fights, Chinese opium smoker's lamp, earthenware inhaler manufactured by S. Mawson & Thompson, London. (100/200) **Selling Price \$50**
316. ASSORTED CLEAR GLASS BASES AND EPERGNE BUD VASES, 19th and 20th century, bases signed S. Clarke. (50/100) **Selling Price \$25**
317. TWO MIRRORED PLATEAUS AND ASSORTED WOOD AND GLASS STANDS FOR FAIRY LAMPS, (made up). (50/100) **Selling Price \$25**