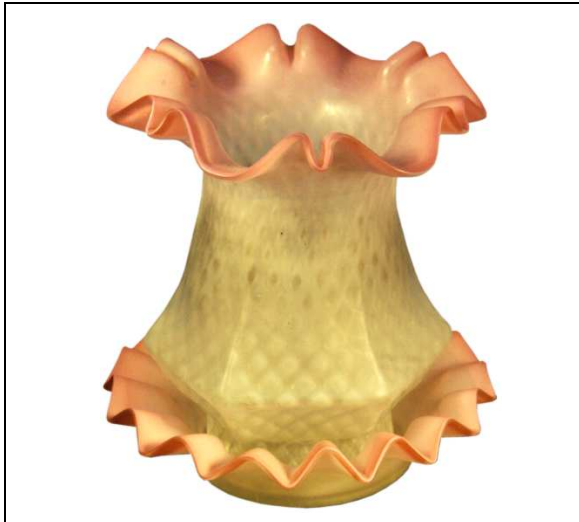


*Undocumented Fairy Lamps (Cont'd)*



U-177

Chimney style satin glass with translucent pink ruffles around top of shade and edge of matching base. The shade was blown into an angular six-sided shape with an all-over diamond optic pattern. 6.5"h. x 6" dia.



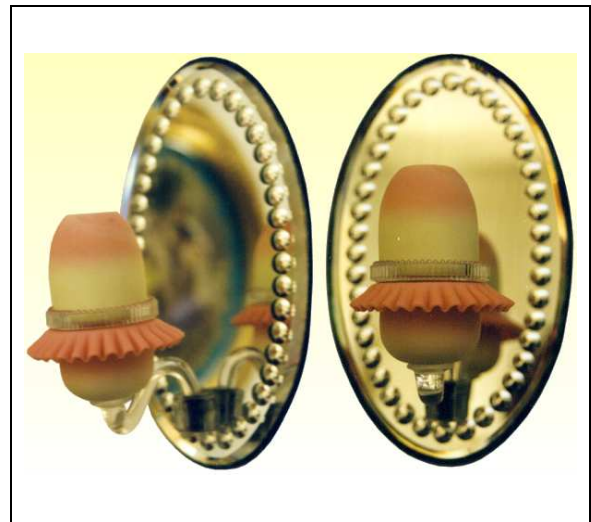
U-178

Chimney style green & white swirled and mottled satin glass dome with matching base. Dome has straight bottom rim and softly ruffled top rim. Base has hand-tooled flared pie-crust edge. 6.0"h. x 5.5" dia.



U-179

Fairy-size dome in yellow, white, and frosted clear stripe in Cleveland pattern. Dome rests in clear Clarke lamp cup. Matching deep basket base has slightly ruffled down turned edge with 4 pulled-up points. 5.0"h. x 9.0" dia. x 5.0" square.



U-180

Pyramid-size acid Burmese dome in clear lamp cup marked "The Boudoir Light." Matching acid Burmese base with petticoat rim. Base is attached to clear glass arm mounted on beveled wall mirror with convex circles and trimmed in brass. 12"h. x 7"w.