



Fairy Lamps

Elegance in Candle Lighting
www.fairylampclub.com

IN THIS ISSUE

Club News

Six-year Anniversary	1
New Membership Rates	1
2003 Membership Directory	2
Members e-Mail Addresses	2
Fairy Lamp Club Meeting	2
Antique Trader Interview	3
Fairy Lamp Club Brochure	3

Website Update

Fairy Lamps For Sale On-line	4
Fairy Lamp Articles On-line	5

From Our Members

Unusual Burmese Fairy Lamp Acid Mark	5
Contemporary Figural	6
Book Report: Mt. Washington Art Glass and Webb Burmese	7
The Jules Barbe Pattern Book – NAGC	8
Pyramid-size Pond Lily Fairy Lamp	9
Christmas Candle Lights	10

Questions and Answers

Left Handed Fairy—A Follow-up	11
-------------------------------------	----

Undocumented Fairy Lamps

Classified Ads

Reference Guidelines

Membership Information

UNDOCUMENTED PAGES11, 12, 13, 14

CURRENT MEMBERSHIP154

CLUB NEWS by Jim

Before I begin with the latest news about our Club, I want to apologize for taking so much space in "your" Newsletter. I try to keep administrative things to a minimum and fo-

cus on substantive information that I am sure you all would rather have. However, I have so many things to pass along that this issue will be a little different than most. But, do not worry I will make it up to you in the next issue. So....what is up?

SIX-YEAR ANNIVERSARY

Can you believe this is the sixth anniversary of our Club! My, how time flies when you are having fun.

I want to thank all of our members who have contributed to our Newsletter and supported our Club all these many years. It is your continued support and enthusiasm that makes our Club a success and allows for continued growth. This is not simply growth in the number of members, but growth in knowledge and understanding of our fairy lamp collections. I cannot begin to express how much I have learned about fairy lamps over these years and I hope you have learned equally as well. I am looking forward to the coming years and wonder what new information they will bring. I can hardly wait! Thanks everyone!

NEW MEMBERSHIP RATES

The time has come to increase the membership dues for our Club. Hopefully, you will agree that your current dues are a good value and will continue support our Club at the new rate.

Effective January 1, 2003, the new membership dues will be \$20 per year for members resident in the United States. Due to additional postage, the foreign membership dues will be increased to \$25 per year. The number of newsletter issues per year will remain the same.

Now, a word to the wise. If your membership is up for renewal in January, try to get your renewal in before January 1, 2003. Everyone loves to save money so do not delay. Renew your membership today!

2003 MEMBERSHIP DIRECTORY

Many of you will recall that I issued a Fairy Lamp Club Membership Directory for 2002. I hope you found the membership information useful in developing and maintaining your network of fellow fairy lamp collectors.

As you know, I am very protective of our members' privacy and only include those members in the directory who have given me permission to do so. I also accommodate the degree of information each member wishes to include. Many members elect to include all pertinent information and others elect to include only a minimal listing. What you elect to include is up to you, however, I will not include any information without your permission. If you were not included in the last issue of the directory and wish to be included in the 2003 directory, please let me know as soon as possible. I will begin preparing the new membership directory in January and I certainly do not want you to be left out.

If you have any questions about the directory or want to add, change, delete, or simply confirm any of your listing information, just drop me a note at sapp@erols.com or call me at 703-971-3229.

MEMBERS E-MAIL ADDRESSES

I have e-mail addresses for approximately 85 percent of our members. I maintain this list of addresses in a separate directory in my e-mail address book. Perhaps some of you have noticed that your e-mail name begins with "FLC" (Fairy Lamp Club). That is how I manage to find all of you when I need to send out an e-mail message to all the Club members.

During the past quarter, I sent out several e-mail notices to our members. Most of the notices were to alert you to additions to the "FAIRY LAMPS FOR SALE" webpage or other equally important information. If you did not receive a notice from me this quarter, chances are that I do not have your e-mail address or (more likely) I have an "old" e-mail address for you. In either case, please let me know what your current e-mail address is and I will include you in my e-mail directory. I will also make sure I have the correct e-mail address for the 2003 Fairy Lamp Club Membership Directory.

FAIRY LAMP CLUB MEETING

Since the founding of our Club, I have thought about having a Club meeting and on several occasions I have even brought it up as a possibility. But, as you know, nothing has happened. The excuses are plentiful but the reality is that I was afraid of getting in over my head. But, with lots of encouragement and a little "arm-twisting" I am going to seriously look into making the arrangements for a Club meeting. As they say, nothing ventured nothing gained. Besides, what is the worse that can happen? I do not want to think about it. ☺

Before I begin any planning, I need to find out what your thoughts are. While I cannot begin to accommodate the wishes of everyone, I can attempt to schedule a meeting that is acceptable to the majority. So, with that in mind, I have a few questions for you.

Enclosed you will find a simple survey to help me understand your preferences. As with all surveys, it does not begin to address all the things that are important to you or identify all the things we need to consider. However, it does allow me to collect the basic information needed and, hopefully, enough to generate new ideas. If you have any ideas or suggestions that are not

identified in the survey, I have provided ample space on the back of the survey for you to make additional comments or suggestions. By no means let this form restrict your response. It is primarily designed to collect your thoughts in whatever format you wish to provide them.

Please take a minute to complete the survey and return it to me in the envelope provided. I will need all the help and ideas I can find if we are to be able to pull this off. A lack of response could very well be interpreted as a lack of interest. ☺

ANTIQUE TRADER INTERVIEW

In September, I was interviewed by Antique Trader Magazine. Why you ask? Well, to help fill the columns of their weekly magazine, of course. Can you imagine how difficult it must be to find enough "antique news" to fill a weekly publication. What a job that must be.

I welcome opportunities like this because it provides our Club some free exposure and, hopefully, finds new collectors to join our Club. However, at the same time, I am usually hesitant because of the wealth of experience and knowledge that so many of our members have. Any one of them would be a much better candidate for an interview than me. But, occasionally, I must "step into the sunlight" and hope they will "treat me gently" in their reviews of my thoughts. ☺

The primary focus of the article was a "Market Update" on lighting. The original concept for the article was much broader than how it came out, however. My limited understanding of the market place is narrowly focused on fairy lamps so they had little choice except to title the article: "Exceeding Fairy Market Values." Pretty catchy don't you think. ☺

The article, written by Antique Trader News Editor, Bill Van Lannen, was pretty good, however, I can hardly provide an unbiased

review. It contained much of the interview and even included several photos of fairy lamps. The photos were provided by several of our members in support of the *Antique Trader Lamps and Lighting Price Guide*, Krause Publications, 2002.¹

The article is in Volume 46, Number 41, October 9, 2002 in the Antique Trader magazine. You can subscribe to Antique Trader Magazine on their website.² In addition, you can review the article from the Fairy Lamp Club homepage using the link for "On-line Articles."

FAIRY LAMP CLUB BROCHURE

I have designed a brochure for our Fairy Lamp Club. I use it to promote our Club at Antique Shows and other gatherings where I might find new fairy lamp Club members.



FAIRY LAMP CLUB & Newsletter



WWW.FAIRYLAMPCLUB.COM

Fairy Lamp Club Membership Application

Name	
Address	
City, State	
ZIP	
Phone	
FAX	
e-Mail	

The following information may be included in the Fairy Lamp Club Directory. The directory will only be distributed to the Fairy Lamp Club members and will not be used for any other purpose or promotion.

☐ Same as above ☐ None of the above

Name	
Address	
City, State	
ZIP	
Phone	
FAX	
e-Mail	

The Fairy Lamp Club, established 1996, is dedicated to the research and advancement of information related to Victorian and contemporary fairy lamps. It is the largest Club dedicated to this specialized collectable. The members, approximately 160, are throughout the United States with members from Canada, England, and Australia. The membership includes many collectors who have dedicated years—in some cases decades—to researching and collecting Victorian and contemporary fairy lamps and other candle-burning devices. They are an invaluable source of information and share their experience freely with other Club members through their contributions to the Fairy Lamp Newsletter and the on-line Fairy Lamp Discussion Group.

The Fairy Lamp Newsletter is published in the month of February, May, August, and November. The primary focus of the newsletter is Victorian era fairy lamps, but its content is open to contemporary fairy lamps as well. In addition to articles specific to fairy lamps, the newsletter often contains photos of previously undocumented fairy lamps, classified ads with fairy lamps and other related items for sale or trade, fairy lamp auction reports, internet news, relevant publications, etc. If you collect or deal in fairy lamps, or simply want to learn more about them, you would find the newsletter both interesting and informative.

The brochure is as you might expect, a bi-fold with brief description of our Club, description of our website, explanation of what fairy lamps are, and most importantly, a membership application. If you plan to attend a meeting, exposition, or auction where you think a Fairy Lamp Club brochure would be of value, just drop me a note and I will send you a supply to hand out.

¹ Article *Lamps & lighting Price Guide*, FL-XXIV-1

² www.collect.com/interest/periodical.asp?Pub=AT

WEBSITE UPDATE by Jim

FAIRY LAMPS FOR SALE ON-LINE

For some time I have often thought how nice it would be for our members to be able to buy and sell fairy lamps on-line from our Club website. Now, that opportunity is finally available.

It all began with an eBay auction that failed to meet the reserve. The seller, who is known to all of us, was Bob and Pat Ruf. The fairy lamp that failed to meet the reserve was a choice Burmese with a matching base. With only a subtle suggestion, Bob and Pat agreed to offer the fairy lamp to our members at a fixed price. The rest is history. A long awaited "Fairy Lamps for Sale" webpage was born.

Within a day Bob and Pat sold their fairy lamp and quickly offered another for sale with the same quick results. Other members joined in by offering additional choice fairy lamps for sale. The results have been overwhelming for our sellers. Inquiries are plentiful and sales are quick and easy.

Within the first few weeks our Club members have listed over twenty fairy lamps for sale and nearly half have already been sold to other Club members. Aside from making a sale, knowing that your fairy lamp is going to another Club member has to be part of the "profit." Congratulations to both buyers and sellers in this new venture.



Selection of fairy lamps currently for sale.

To place your ad on the webpage, send me a photo (e-mail or snail-mail), a brief descrip-

tion, and your asking price. I will place your ad on the webpage and link the photo to your e-mail address. In that way, potential buyers can contact you by e-mail without having your name, address, and telephone number on the webpage. If you are not on-line and wish to offer a fairy lamp for sale, I will link the photo to my email address and provide only interested buyers your contact information. So far, this concept has been working pretty well. The only problem some of our sellers have experienced is having to say, "Sorry, that fairy lamp has already been sold" to potential buyers. What a "problem" that must be. ☺



These fairy lamps have already been sold.

There are a few important things you need to know about placing an ad.

- This is a FREE service for Fairy Lamp Club members only. There are no listing fees or commissions. What a deal!
- Only Victorian-era fairy lamps are accepted for sale at this time.
- The description, photograph, and asking price are the sole responsibility of the owner. I can help with the description but please do not ask me to help determine a price.
- Additional shipping and insurance charges, if any, are determined by the seller. The advertised asking price typically does not include shipping costs.
- The Fairy Lamp Club accepts no responsibility for any transaction between the buyer and seller.

Of all the enhancements we have made to our Fairy Lamp Club website, our Fairy Lamps for Sale webpage has captured the most attention. In fact, the statistics for our Fairy Lamp Club home page show that we are quickly approaching 900 hits a month! Can you imagine! ☺

You can access the Fairy Lamps for Sale webpage from our Fairy Lamp Club home page or directly to the web address in the footnote.³

FAIRY LAMP ARTICLES ON-LINE

I have added a few new articles to the on-line database.⁴ The articles include:

- Mat-Su-No-Ke Rose Bowl – Or, Is It?
- Harrach Fairy Lamp Identified
- Exceeding "Fairy" Market Values

I have no real criteria for selecting articles to be put on-line. Their selection is usually prompted by an inquiry from a fairy lamp collector or simply because it serves as an interesting source of information. If you have an article that you would like to have on-line, just drop me a note and I will take care of the rest.

I have also converted several articles from Adobe Acrobat .pdf format to HTML format. I know that may as well be in Greek to some of you but the result is faster loading of the webpages and broader accessibility to many of our members.

FROM OUR MEMBERS

UNUSUAL BURMESE FAIRY LAMP ACID MARK by Jim

As many you know, Thomas Webb, under license granted by Samuel Clarke, produced

³ www.fairy-lamp.com/Fairylamp/ForSale.html

⁴ www.fairy-lamp.com/Fairylamp/FairyLampArticles.html

the most exquisite Burmese fairy lamps found today. In fact, there is no evidence that any Victorian-era Burmese fairy lamps were produced by anyone but Thomas Webb. Certainly, no evidence that Mt. Washington, who granted a license to Webb to produce Burmese products, produced any Burmese fairy lamps. (*An apparent fact that continues to mystify me.*)

The Burmese fairy lamps produced by Thomas Webb covered a full range of styles from the simplest plain pyramid on a clear lamp cup to the most elaborate sociables, epergnes, and chandeliers. Many of these were often decorated in a variety of designs under the direction of Jules Barbe, a Webb artist and designer. Many of these styles are well documented in Clarke's catalogs and advertisements. Webb, to the best of my knowledge, did not advertise fairy lamps directly and did not market them as Webb products. Instead, their Burmese products were simply marked with the well-known Webb acid stamp or with paper labels.



The paper labels have long since disappeared and it is very rare to find one intact. The acid stamps, however, are very durable and are often found on Webb's Burmese fairy lamp bases and, occasionally, on the Burmese fairy lamp dome itself. In addition, attesting to Clarke's "marketing genius," whenever Webb's acid stamp trademark is found on a fairy lamp, a similar Clarke acid stamp trademark is often found on the same piece. Such is the case in a newly identified acid stamp on a Burmese fairy-size dome.

Recently, I acquired a Burmese fairy lamp on a crystal standard with a Clarke pegged

lamp cup. Inside the dome was a note from the previous owner that simply read: "Signed." Since I have another fairy-size dome with the Webb and Clarke acid stamp, I assumed this one was marked in a similar manner. However, no acid-stamp mark could be found, much to my disappointment.

While photographing the fairy lamp for my records, I noticed the slightest "glint" around the edge of the rim on the satin finished Burmese dome. It was just enough to get my attention. So, using my strongest reading glasses and the brightest of lights I looked closely at the "glint." Sure enough, the dome was signed!



Difficult to see, hard to photograph, and impossible to print. I doubt that you can see portions of the mark in this photo. But, if you "squint" very hard, you just may be able to see portions of the portion "S Patent" acid etched along the rim. Or, you just may have to take my word for it. ☺

Around the rim of the dome in very small block letters the words: "S. CLARKE'S PATENT TRADE FAIRY MARK" and "QUEEN'S BURMESE WARE." Not every letter was discernable but enough were clearly identified to know what was printed on the dome.

Normally, I would call this an "acid stamp," however, the letters are shiny in appearance on a satin finished dome. This implies that something was applied to the dome before the dome was subjected to the acid bath that produced the satin finish. In addition, the block letters are extremely small. They measure 1.5 mm in height (6/100ths of an inch) and they are right along the rim of the dome. Making a stamp this small and apply-

ing it carefully to the rim of the dome would be a challenge at best.

Conferring with some of our more experienced members, I discovered that this mark is very unusual and they had not seen it before. Given the size of the mark, I am not surprised they had not "seen" it before. Lloyd and Nan, however, carefully checked their collection and, sure enough, found another fairy lamp dome similarly marked.

So, get out your magnifying glass and find some bright light. You just may have one in your collection. Good luck.

CONTEMPORARY FIGURAL by John

A quick run through a "flea market" in the area brought surprise, excitement, and ultimately....disappointment. However, my find also provided the subject of this article.

On a shelf, peaking out from a cluttered assortment of used kitchen utensils and Mason jars, was an example of Ruf figure numbers 344, 345, and 346, a bisque figural cat head with amber glass eyes! Even better was the price tag of \$1.00!



I quickly snatched it from the shelf. It was only then that I realized that a large triangle of the forehead had been broken out and glued back in place.



In addition, there was a red and gold foil label on the bottom, reading "FINE QUALITY - LEGO - TAIWAN."

Thus, the disappointment! This is apparently a reproduction of the Victorian originals shown in Ruf's book. This example measures 3.875" high by 3.50" wide. There is also a faint mark of "© Lego" printed in black script. An impressed fleur-de-lis pattern is on the reverse, just as described in Ruf's book. The amber glass eyes have vertical pupils painted on the back giving a realistic appearance.



The foil label is similar to those on porcelain items known to have been manufactured in the 1960's and I am assuming it is of that period. The texture of the bisque porcelain has a bit more of a "grainy" feel to it than most antique bisque and the quality of the painting is not as good. However, if the label was gone and the ink mark washed away, these could be mistaken for the older exam-

ples. Since it is probably 40 years old, I suppose that it should be collectible in its own right.

A check of china mark reference books and a search on the Internet did not result in any information on the Lego Company. If anyone has any further information, please forward it to the Fairy Lamp Club newsletter.

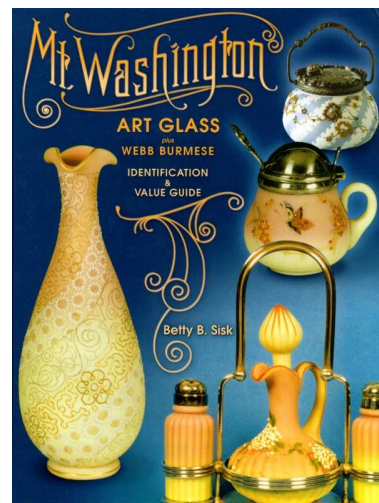
Editor comment:

In addition to the examples referenced by John, the following figures in Ruf's book also have the embossed fleur-de-lis pattern is on the reverse: Ruf-329, 352, 356, 360, 362, 376, 377, and 381. In addition, U-55 in the Undocumented Section has the same fleur-de-lis pattern.

I think there is more to learn from this story and I have already asked a few members for comments. Hopefully, we will have additional information to share in the February issue of the Newsletter.

BOOK REPORT: MT. WASHINGTON ART GLASS AND WEBB BURMESE by Jim

The art glass collector community has waited a very long time for a comprehensive book on Mt. Washington Art Glass and this profusely illustrated book by Betty B. Sisk was not a disappointment.



The book *Mt. Washington Art Glass and Webb Burmese – Identification and Price Guide*, Betty B. Sisk, Collector Books, ISBN: 1574323067 was released late this summer. It has 270 pages and is illustrated with nearly 1000 absolutely beautiful color images. Many of the photos were contributed by several Fairy Lamp Club members.

The book provides a brief introduction of Mt. Washington Glass Company and explanations of several art glass types including Burmese, Cameo, Crown Milano, Peach Blow, Royal Flemish, Amberina, and several others. There are also chapters on lamps, console bowls, salt and sugar shakers, toothpick holders, etc. In addition, there are a few examples from Mt. Washington's sales ledger and design books. As if that was not enough, it also includes an excellent chapter on Burmese ware by Thomas Webb and Sons. Of course, this chapter is important to us since Thomas Webb was the producer of Burmese fairy lamps and companion pieces.

The Thomas Webb Burmese examples are from the collection of Henry and Geneva Tyler. Their collection includes many excellent examples of Burmese fairy lamps including several epergnes and sociables. Many of the examples are decorated in Webb's unique style and illustrate the diversity of products produced by Webb. This chapter alone is well worth the "price of admission" for fairy lamp collectors. However, it is difficult to collect fairy lamps without a love for art glass. This book is a "must have" for many art glass collectors.

The book retails for \$49.95 and you can order it directly from the publisher's website.⁵ Or, if you want to save a few dollars, you can order a copy on-line from Amazon Books⁶ for \$34.97 including shipping.

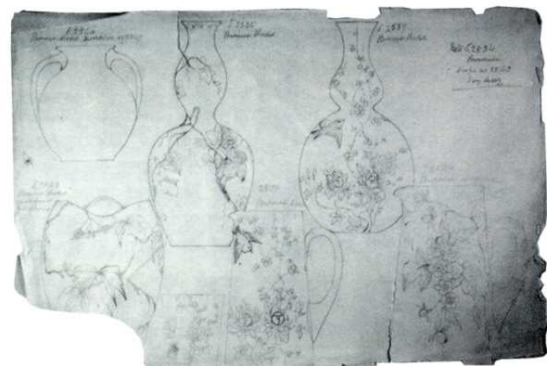
⁵ www.collectorbooks.com

⁶ www.amazon.com

THE JULES BARBE PATTERN BOOK – NAGC by Jim

One of the first things I do when I get a new reference book is to review the Bibliography. In many cases it helps to understand the depth of the research and often identifies new reference material I may not have been aware of. Such was the case with the book *Mt. Washington Art Glass and Webb Burmese* by Betty Sisk. The bibliography only contained a few reference books; most I was aware of. In addition, however, there was a short list of articles in other publications such as *Glass Collectors Digest*, *Hobbies Magazine*, and the *Glass Club Bulletin* by the National American Glass Club (NAGC). One of the articles referenced was "Insight into the Development of Burmese: The Jules Barbe Pattern Book, *Glass Club Bulletin*, Number 158, Spring 1989. This article really got my attention and I quickly ordered a copy from the NAGC.

The article, written by Jane Chester Young, was everything I hoped it to be. It gave an excellent accounting of the relationship between Frederick Shirley, general manager of the Mt. Washington Glass Company and Thomas Webb and Sons in the UK. They obviously had an excellent business relationship and shared much together including the production of Burmese ware, which was patented by Shirley.



One of eight pages from the Webb Burmese ware design book that are included in the NAGC article.

The article also includes copies from Webb's original Burmese design book, including several examples decorated by the Jules Barbe designers and artists. Even though there are no fairy lamp examples, this article helps to understand the relationship between these two companies and the Burmese products they produced.

I have made several requests to the approving officials at the NAGC to obtain permission to put the complete article on our website. However, as of this writing, I do not have an answer from them. The webpage is already to go but I need to get their permission first.

If you would like to obtain your own copy of the Glass Club Bulletin, Issue 158, Spring 1989 from the NAGC, you may send a request to:

Karen Petraglia
NAGC Educational Resources
40 Country Road.
Holliston, MA 01746

Or, by e-Mail:

Kp0828@aol.com

PYRAMID-SIZE POND LILY FAIRY LAMP by Helen, Graham, and Jim

Helen and Graham live in the United Kingdom and enjoy access to fairy lamp markets that many of us can only dream about. They have contributed several articles to the Newsletter and have shared their "unusual finds" and undocumented fairy lamps with us countless times. It continually amazes me what rare examples they are able to find. This one is no exception.

Recently, Graham sent me a note with his latest finds – choice finds to say the least. However, one of his purchases was really unusual – a "pyramid size" Pond Lily shade.



You may recognize the shade on the right as being R-219. It is a ribbon satin MOP cased in white and is typically seen with a green satin Pond Lily base. This style of glass was discussed in detail in FL-XIX-7. The article "Ribbon Satin Swirl – Mother of Pearl" by Frank can also be found on our website.⁷ The shade on the left, however, is a rare find!

As you can see, the shade is substantially smaller in size. While the two sizes are referred to as fairy and pyramid-size, neither was ever intended to be used with a Clarke lamp cup. Instead, they used a Pond Lily base with a tri-corner folded rim and integral candle cup. In addition, the glass on the pyramid-size dome appears to be ribbon pearl overlaid with clear glass. The pattern appears to be similar and possibly from the same manufacturer, but as you know specific attribution is very difficult.

Graham, of course, has the same questions you or I have regarding this smaller shade. Has anyone seen another like it? Does anyone have or know where a "pyramid-size" Pond Lily base can be found? Anyone have opinions as to manufacturer or vintage? Are there other colors? I am sure you have questions of your own. If you have any information to share regarding this unusual shade, send it along. We are all anxious to hear from you.

⁷ www.fairy-lamp.com/Fairylamp/ArticleRibbonMOP.html

CHRISTMAS CANDLE LIGHTS by

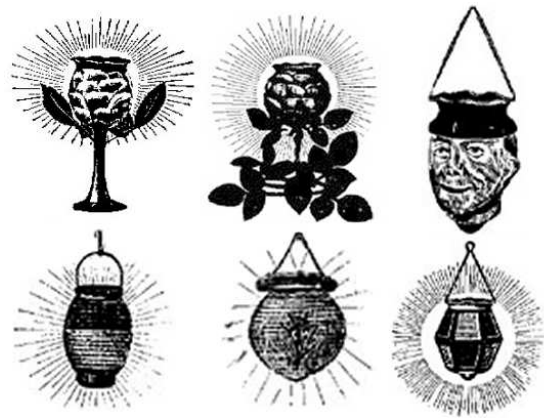
Marianne, Robert, Randy, Bob, Pat, and Jim

As you can see by the credits, several members contributed portions to bring this article together.

Recently, Marianne inquired about a Christmas candle lamp she bought on eBay. It apparently had the same origin as the one illustrated in R-711, the Devil Candle Lamp. Since hers had the original box, the origin was determined to be Germany. Her inquiry led to Randy who found several pages from a 1924-26 German Christmas Catalog, which illustrated Marianne's candle lamp along with several others of similar style. One of those happened to be the same style Robert was auctioning on eBay. In addition, after a little research, Marianne found yet another similar style on eBay. This version had a spring clip to attach to the tree or other surface. All of this information contributed to a better understanding of these unusual candle lamps. That, my friends, is the true value of this Club.



Illustrated, left to right, are Marianne's two candle lamps, R-711 Devil candle lamp, clip-on variant found on eBay, and Robert's variant with a decorative flower and leaves. They all appear to have the same origin but the German company that made them is still a mystery.



These illustrations are from the 1924-26 German Christmas catalog supplied by Randy. The original catalog pages contained dozens of Christmas ornaments but I have clipped these out for clarity. Two are clearly the same as Marianne and Robert's. While R-711 is not illustrated, the hanging figural candle lamp shows that figurals were part of their inventory. The remaining candle lamps are hanging versions typical of many English Christmas lights. But, there is more.



To be honest, I can not recall where the above image came from (I am sure one of the co-contributor's will remind me) but it illustrates yet another variant of the German Christmas candle lamp. It has a spring clip to attach to the tree and a painted glass shade surrounding the candleholder.

Marianne is continuing her research into these candle lamps. Please let us know if you have additional information to share.

In the meantime, if you would like to know more about German Christmas ornaments and customs, Marianne has found a few websites that you may find interesting and informative. The links are listed at:

www.fairy-lamp.com/Fairylamp/German.html

By now, many of you are asking, "What does this have to do with fairy lamps?" Very little perhaps, unless you consider the value of research in understanding the origins and uses of related candle burning devices. I certainly do, and hopefully you do as well.

QUESTIONS AND ANSWERS

LEFT HANDED FAIRY—A FOLLOW-UP

by Jim and Ken

In FL-XXIV-10 I asked about a "left-handed fairy" embossed in two of my fairy-size lamp cups. The following is a summary of information I received from Ken about them:

"Your left-handed fairy on your two bases are reproductions. I have seen these in Taiwan and the factory that makes them has now moved to China. They copied both sizes, pyramid and fairy. They also make the Hobnail design press glass shades in all colors. They are very good reproductions and very few people would recognize the difference. The same is true with their Hobnail shades. I tried to buy one of each color but they would only sell them by the gross."

The information Ken provided was very interesting and somewhat alarming.



I was not aware that this style of cup had been reproduced. As you can see, the cup is the typical ribbed and beaded style. The glass has the appearance and "feel" of a vintage Clarke lamp cup. To be very honest, I hope Ken is mistaken as this cup has all the features of a vintage cup except for "the left-handed fairy." However, if Ken is correct, perhaps he can find additional information about the manufacturer for us.

UNDOCUMENTED FAIRY LAMPS

Included with this issue are four color pages of previously published undocumented fairy lamps for your files. As you know, I have been re-printing the original black and white pages in color. I still have ten pages to re-print in color before I begin producing new undocumented pages. I am getting impatient and want to complete them so we can move on. I am giving some thought to sending out a supplement with these "old" pages. Before I make any promises, however, I want to complete reformatting the color images and then I will consider the added expense of sending out a supplement to the newsletter. Stay tuned. I want to "move on" as much as you do.

CLASSIFIED ADS

SERVICES

For members of our Fairy Lamp Club, I will list your Victorian-era fairy lamps on eBay On-line auctions for a nominal fee or commission.

Contact me for details.

Jim Sapp, 6422 Haystack Road, Alexandria, VA 22310-3308, Phone (703) 971-3229, e-mail: sapp@erols.com

REFERENCE GUIDELINES

This newsletter makes extensive use of *FAIRY LAMPS - Elegance in Candle Lighting*, by Bob and Pat Ruf, Schiffer Publishing, Ltd., 1996, in identifying fairy lamps. While this is the most complete reference book, there are others that you may also use. For consistency, we will use the following key to reference illustrations of fairy lamps. The first letter will identify the reference book followed by a plate or figure number.

For example:

A-P3-4 Refers to T. Robert Anthony's book *19th Century Fairy Lamps*, plate 3, number 4.

C-227 Refers to a fairy lamp number in Clarke's 1888 catalog, reprint by T. Robert Anthony catalog number 227.

FL-XV-2 Refers to the Fairy Lamp Club Newsletter, Issue XV (15), page 2.

H-P117-2218 Refers to the Hosch catalog, Plate 117, item 2218. In the case where the Hosch catalog plate number is unknown, the plate number will simply be "Unknown."

R-167 Refers to Bob and Pat Ruf's book *FAIRY LAMPS-Elegance in Candle Lighting*, figure 167.

T-PV-8 Refers to Dorothy Tibbetts' book *Clarke's Fairy-Lamps*, plate V, number 8.

U-10 Refers to photographic examples of fairy lamps that are not shown in any of reference books. They have been assigned an undocumented reference number in the Undocumented Fairy Lamps section of the newsletter. In this example Undocumented fairy lamp number 10.

Let me know if other reference materials need to be added to the code list.

MEMBERSHIP

The Fairy Lamp Club is a non-profit club for collectors of Victorian and contemporary fairy lamps. The club's quarterly newsletter is published in the months of February, May, August, and November. The purpose of the newsletter is to provide a forum for members to share information about fairy lamps with others and is greatly dependent upon the contributions of our members for its content.

To join the Fairy Lamp Club and receive the Fairy Lamp Newsletter for one year, please send \$20 to:

JIM AND PAT SAPP
6422 HAYSTACK ROAD
ALEXANDRIA, VA 22310-3308

E-mail:.....sapp@erols.com

Telephone:.....(703) 971-3229

Fax:(508) 448-8917

-or, if you prefer:

BOB AND PAT RUF
4165 FALLING WATER
RENO, NEVADA 89509

E-mail:.....bpr@power.net

Telephone and Fax:.....(775) 747-2675

Back issues of the Fairy Lamp Newsletter are available for \$4 per issue plus postage.

Foreign membership dues are \$25 per year.

Thanks

Thanks to everyone that contributed to this issue of the newsletter. The success and continued growth of this newsletter is directly attributed to your participation and support.

