



# Fairy Lamps

*Elegance in Candle Lighting*

## CLUB NEWS

### Night Light Convention

The Night Light Miniature Lamp Club is planning to hold its 1998 Night Light Convention in Harrisburg, Pennsylvania on September 18-20. As I mentioned in the last issue, this convention will provide an opportunity for many of us to meet. Pat and I are planning to attend and we hope to see you there.

The convention will be held in the Holiday Inn Harrisburg East (1-800-637-4817) located at Exit 1 of Interstate 283, just north of the Pennsylvania turnpike. There will be a \$10 registration fee to attend the convention.

The convention will begin Friday evening at 7:30 with a reception and social hour. Saturday morning will be free, allowing time to attend the "Antiques at Carlisle" Antique show in Carlisle, Pa. Saturday afternoon will feature a sale and swap for members of the Night Light Club followed by a members banquet in the evening. Sunday morning will be a short business meeting with seminars and time for questions and answers. Sunday afternoon will feature a public miniature lamp auction.

### Membership List

Approximately a third of our membership responded favorably to my proposal to distribute a Fairy Lamp Club membership list to our members. Enclosed is a listing of those members who choose to participate. If you find any errors or wish to change your listing, please let me know.

If you wish to be included in the listing, just drop me a note with the information you wish to be listed and I will include you in future listings.

Please remember the membership list is for the benefit of our members and is not to be used for any other publication or promotion.

### Undocumented Lamps & Articles

With this issue of the newsletter, I have nearly exhausted my backlog of articles and undocumented fairy lamps. If you have some information you think our members would be interested in, now is the time to send it in.

So far, I think we have been fortunate to have such good member participation in the content of the newsletters; let's keep up the good work. Keep those articles and photos coming.

If you send in an article, it should be typed and as complete as possible. You may include photos or references to other publications for me to scan. Photos of undocumented fairy lamps should always include a description and dimensions.

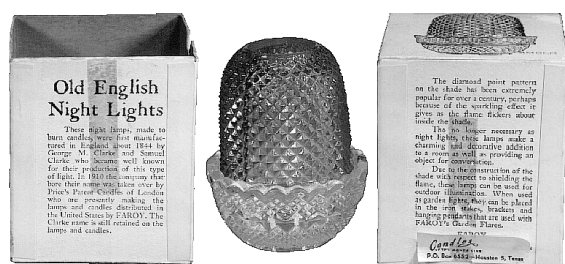
### Renewal Dates

Membership renewal continues to be very good with only a few electing not to renew their subscription to the newsletter. To help you remember when your membership expires, I have added your expiration date to the address label. Your renewal month is the anniversary month that you first joined the Fairy Lamp Club. Please make a note when your membership expires and forward your dues whenever it is convenient for you.

## FROM OUR MEMBERS

### Old English Night Lights by Lloyd & Nan

We recently found a pyramid diamond point fairy lamp in its original box. The dome has a ground chimney opening and the lamp cup has "S CLARKE FAIRY PYRAMID" in small letters and no fairy dancer. The front of the box has a paper sticker glued on with "Candles of the Month Club, P.O. Box 6552, Houston 5, Texas." Under the sticker is "FAROY, 2611 Colquitt, Houston, Texas."



FAROY still operates in Houston making and selling candles and accessories. Upon calling, I was fortunate enough to speak to Mr. Preston Frazier, a founder of the company. He related some interesting information about FAROY and Old English Night Lights.

FAROY was started in 1950. They became a U.S. distributor for the English firm Price's Patent Candles in 1955 and started marketing their Old English Night Lights. Price was owned by the Royal Dutch and British Petroleum Companies as an outlet for paraffin which was a byproduct of oil refining. Price made candles from the paraffin and at that time contracted the glass Fairy Lamps to be made in Belgium. The Candles of the Month Club was a one-man operation run by a "delightful, slightly eccentric old man" who had a mimeographed catalog which he sold from and who came around to FAROY every day

to replenish his stock. His name was B.C. Moses and claimed to be "the man who supplies Santa Claus."

We found this to be a colorful bit of history about these fairy lamps which adds to the enjoyment of having them in our collection. We have examples in amber, blue and ruby. Does anyone have other colors?

The label on the box reads:

### Old English Night Lights

These night lamps, made to burn candles, were first manufactured in England about 1844 by George M. Clarke and Samuel Clarke who became well known for their production of this type of light. In 1910 the company that bore their name was taken over by Price's Patent Candles of London who are presently making the lamps and candles distributed in the United States by FAROY. The Clarke name is still retained on the lamps and candles.

The diamond point pattern on the shade has been extremely popular for over a century, perhaps because of the sparkling effect it gives as the flame flickers about inside the shade.

Tho no longer necessary as night lights, these lamps make a charming and decorative addition to a room as well as providing an object for conversation.

Due to the construction of the shade with respect to shielding the flame, these lamps can be used for outdoor illumination. When used as garden lights, they can be placed in the iron stakes, brackets and hanging pendants that are used with FAROY's Garden Flares.

FAROY

2611 Colquitt, Houston, Texas

The applied paper label reads:

Candles of the Month Club

P.O. Box 6552 - Houston 5, Texas

### Registration Number Identification by Roger

The book *The Identification of English Pressed Glass, 1842-1908* by Jenny Thompson and later supplements has extensive lists of registration numbers associated with glass designs. In *Fairy Lamps - Elegance in Candle Lighting* by Ruf and *19th Century Fairy Lamps* by Anthony, several registration numbers are provided in the fairy lamp descriptions. The following numbers have been

identified with the registering company. It is important to note that design registration alone does not necessarily indicate the manufacturer.

Reg. No.	Reference Number	Registration Date	Design Registered By
44546	R-194	09 March 1886	Blumberg & Company, Ltd., London, England
50725	R-54	10 June 1886	Boulton and Mills, Audnam, Stourbridge, England
"	R-62	" "	" " " "
"	R-155	" "	" " " "
"	R-187	" "	" " " "
"	R-190	" "	" " " "
"	R-571	" "	" " " "
"	R-576	" "	" " " "
"	R-689	" "	" " " "
"	Two additional references to this registered design are made in <i>Fairy Lamps - Elegance in Candle Lighting</i> by Ruf , Appendix I, p. 236		
59136	R-189	19 October 1886	Boulton and Mills, Audnam, Stourbridge, England
"	R-528	" "	" " " "
"	R-539	" "	" " " "
"	R-577	" "	" " " "
92571	A-P2-2 & 4	30 January 1888	J. Stembridge and Company, 28 Red Lion Square, Holborn, W.C., England
"	A-P2-3	" "	" " " " " "
"	A-P5-7 & 9	" "	" " " " " "
"	R-43 (cup)	" "	" " " " " "
"	R-295	" "	" " " " " "
"	R-639	" "	" " " " " "
99929	R-475	09 May 1888	Samuel Clarke of Pyramid Works, Childs' Hill, Cricklewood, England
"	R-479	" "	" " " "
"	R-482	" "	" " " "
99930	R-477	09 May 1888	Samuel Clarke Pyramid & Fairy Lamp & Light Works, Childs' Hill, London
99932	R-481	09 May 1888	Samuel Clarke Pyramid & Fairy Lamp & Light Works, Childs' Hill, London
113915	R-520	15 November 1888	Samuel Clarke Pyramid & Fairy Lamp & Light Works - Marked France
158336	R-674	06 October 1890	Samuel Clarke Pyramid & Fairy Lamp & Light Works, Childs' Hill, London
"	R-675	" "	" " " "
"	R-677	" "	" " " "
176239	R-130	10 August 1891	Greener & Company, Sunderland, England

*Editors Comment:* In reviewing the data provided by Roger, I came across some interesting information about registered designs and patents. I have provided a few excerpts from *Fairy Lamps - Evening's Glow of Yesteryear*, by Amelia E. MacSwiggan that you may find interesting.

- In 1844, a George Miller Clarke applied to the British Patent Office in London for a patent on a certain "improvement in night lights." The specification was numbered 10,029. In 1857, Samuel Clarke, another member of the family, received Patent No. 961 under the same classification. The night lights (candles) manufactured at the Clarke factory at Child's Hill, near London, were marketed under the names of "Pyramid" and "Fairy." Subsequently, the brands "Fairy Pyramid," "Wee Fairy," and "Cricklite" were added. The latter was derived from Cricklewood, a district of northwest London, previously known as Child's Hill, where Clarke's Pyramid and Fairy Lamp Company was located. All of the above brands were registered in the United States, as well as in Great Britain.
- Research regarding certain registry numbers has revealed that a design numbered 206870 was traced to a lampshade patented February 1, 1893, in the name of John Ferrand Clarke, of 48 Moorgate Street, London. A report from the British Patent Office revealed that it was possible for the original registered proprietor of a design to transfer his rights to another manufacturer. On the expiration of a copyright in a specific design, it was made

available for anyone to copy. However, such articles could no longer bear the registration number signifying that the design was still protected. Within these rights, some of the Clarke Fairy Lamps and night lights were continually sold under the Clarke name by the company that bought them out in 1910.

- Clarke's lamps and lights (candles) were patented in Great Britain, France, Belgium, Austria and the United States, and trade marks were registered in those countries.
- It is generally believed that Clarke had some representatives in America who sold his lights and lamps, for many of his English patents were registered in the United States. A search in New Jersey directories revealed that between 1884 - 1888 inclusive, there was a Samuel Clarke in Newark who was listed as a manufacturer of night lights. From 1884 through 1886, his office was located at 25 Exchange Alley, while his residence was at 7 Center Street, Newark.
- "Inhalers" made to fit on "Pyramid Nursery Lamps" were registered under patent No. 168132 in the London Patent Office. The nursery lamps were made of porcelain with a long curved tube through which the vapors of the medicaments could be inhaled for the relief of asthmatic and bronchitic conditions.

In addition, *Antique Glass and China - A Guide for the Beginning Collector* by Geoffrey Godden lists the following Clarke's English registry trade names and trade marks:

18 January 1876	Hand lamp with "pyramid" candle
14 September 1880	Trade name "Pyramid" (candle) used twenty years prior to January 1876 with other references to its use since 1860.
4 January 1884	Trade name "Burglar's Horror" (candle)
21 April 1885	Trade name "Fairy"
1 December 1886	Trade Mark of fairy with wand
20 January 1887	Trade name "Fairy-Pyramid"
10 October 1887	Trade name "Wee Fairy"
25 June 1889	Trade name "Cricklite"

### Godillot & Company Ads by Pat Ruf

#### Part 3 of 3

US prices for Pyramid Food Warmers from Godillot & Co., NY were:



No. 1.....1/2 pint per dozen ...\$11.00

No. 2 .....3/4 pint per dozen ...\$12.50

No. 3 .....1 pint per dozen .....\$14.40

In one dozen lots, less 15%.

*The second ad is solely on Samuel Clarke's Pyramid Nursery Lamp Food Warmers.*

#### **DIRECTIONS FOR USING THE PATENTED PYRAMID FOOD WARMER AND NIGHT LIGHTS.**

The food which is required to be kept hot to be placed in the porcelain panakin; and water in the tin vessel--just sufficient to admit the porcelain panakin being placed therein. Care should be taken in lighting the Night Lights not to injure the top, which is a protection for the wick, but simply apply a lighted match or taper, and allow the material to melt away.

*Comment - On page 9 in Fairy Lamps, Elegance in Candle Lighting, it mentions awards received by Clarke in various Exhibi-*



tions but states that no mention is made what the awards were for. This second ad explains some of the details of the prizes awarded to Clarke.

#### MOSCOW EXHIBITION, 1872

**1st Award:** First Grand Silver Medal to Samuel Clarke, London, for his Patent Pyramid Night Lamp Food Warmer.

**2nd Award:** First Grand Silver Medal to Samuel Clarke, London for his Patent Pyramid Night Lights.

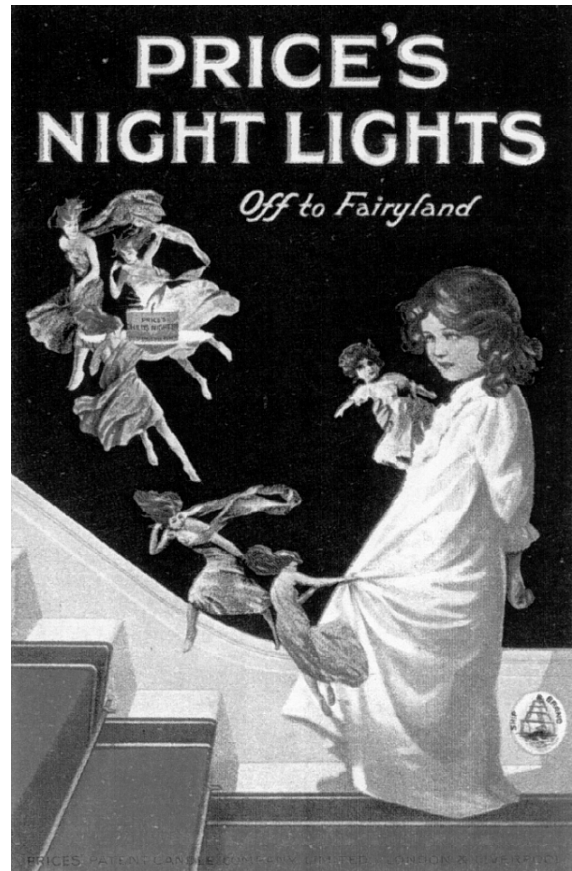
*Alongside a picture of a mother feeding a child from the panakin of a Food Warmer, the ad states:*

"Prize Medal Awarded at the Paris Exhibition 1867, and Prize Medal Awarded, London 1873."

#### Fairy Lamp Ads by Jim

I have received several examples of fairy lamp and candle advertising that you may be interested in seeing. Most were found in periodicals during the late 19<sup>th</sup> and early 20<sup>th</sup> centuries. Space doesn't allow me to reproduce them all at one time so I will include examples in each newsletter as space permits.

The following ad, provided by Rick Baldwin, is a contemporary reproduction of an earlier ad. It illustrates a small child being escorted to bed by a group of Fairies. One is holding a Price's candle that possibly reads: "Child's Night Light." The ad also reads: "Prices Patented Candle Company Limited, London & Liverpool." A small logo in the shape of a sailing ship is in the lower right corner. The logo reads: "Ship Brand." It is the same trade mark referenced in *Fairy Lamps-Elegance in Candle Lighting*, Ruf, Appendix C, Item 6.



If you have advertisements that you think our members would like to see, just drop me a copy in the mail and I'll include them in future issues.

#### QUESTIONS & ANSWERS



In a previous newsletter article<sup>1</sup> I asked if anyone had any additional examples of the pyramid hand lamp pottery candle dish. This example of a pottery candle cup, provided by Graham & Helen in the UK, is very unusual indeed. Does anyone have any information related to the manufacturer or vintage?

<sup>1</sup> Article "The Pyramid Hand Lamp" by Jim, Issue VI, February 98.

### CAN YOU HELP TO IDENTIFY THESE?

Jeanette and Roger are collectors of both Victorian and contemporary fairy lamps. They have provided photographs of three lamps that they are having difficulty identifying. Can anyone help? If you have any information that may help to identify the manufacturer of these lamps, please let me know. I will pass along any information provided to Jeanette and Roger.



From left to right:

- Green frosted dome with white enameled flowers and matching footed base.
- Amber dome with small hobnail-like pattern. Brass or brass-colored tin base with leaf-like decorations.
- Green transparent hobnail dome on matching base.

Note: Individual photographs are not in correct relative size to one another.

#### Unusual Holes by Jim

A few months back I came across an unusual pyramid-size lamp cup. It appeared to be a classic Clarke design except for one obvious difference. It had a large hole in the bottom. The hole, measuring 1.5" in diameter is perfectly round and appeared to be part of the original design. However, I did not put too much credibility to it until....I came across another similar design.



The second "lamp cup," contributed by Bill and Ada, is unusual in many respects. The inner diameter for the dome is approximately 2.9." Too big for a pyramid and too small for a fairy-size dome. The hole in the bottom is only 1.3" in diameter. Again, the hole is perfectly round and looks to be part of the original design. In addition, this cup is marked. On the outside, just under where the dome would fit, it reads: "Patented 1896 — No 2075 — CM 58084." It is possible the "CM" could be "GM", it is too difficult to be sure.

So now the question is, does anyone have an explanation for these two unusual lamp cups? Anyone recognize the maker's mark or design number?

### AUCTION REPORTS

#### Whalen's Good Friday Auction<sup>2</sup>

John Whalen's annual Good Friday on April 10th, Neapolic, Ohio, attracted over 400 floor bidders as well as absentee and phone bidders. In addition to some very nice miniature oil lamps there were a few fairy lamps offered for auction. They were:

- \$50 R-67** Citron fairy-size nailsea dome on clear Clarke lamp cup.
- \$200 R-81** Acid Burmese fairy-size dome on clear Clarke lamp cup.
- \$295 R-67** Blue fairy-size nailsea dome on clear Clarke lamp cup.

Unlike many auction houses today, Whalen's does not charge a buyer's premium.

#### Julia's Auction by Jim

<sup>2</sup> Source: Maine Antique Digest, Volume XXVI No. 7, July 1998

I had the opportunity to attend the James D. Julia Auction on June 18-20 at the Olde Byfield Auction Gallery, Byfield, Mass.

The auction was dedicated to excellent examples of Victorian era art glass, lamps, miniature lamps, and, of course, a few choice fairy lamps.

The auction was reasonably well attended including several Club members. However, many winning bids were made by absentee and phone bidders.

Prior to the auction, a special presentation on "Collecting Burmese Art Glass 1885 - 1985" was presented by Mr. Louis St. Aubin, Jr. He showed many fine examples of Burmese and chronicled the progression of Burmese glass through an interesting history of techniques and manufacturers.

Below is a listing of the fairy lamps that were sold at the Julia Auction. The descriptions are those provided by Julia Auction, Inc.<sup>3</sup> Winning bid does not include a 15% buyers premium.

#### Winning

#### Bid

#### Description

- \$725 R-656** Verre Moire glass with white loops on deep cranberry. So called Nailsea type. Size: 5-1/2" tall x 5-1/2" base diameter. Condition: Base and insert are excellent, shade has minor chip at rim on top.
- \$600 R-500 (Undecorated)** Clarke's pyramid Burmese fairy light. Matte finish with excellent coloring. With original pottery lamp base. Bares "Exhibition Label Mt. Washington Art Glass Society." Size: 5-1/2" tall - Length of shade 2-3/4" tall - diameter of base 6." Condition: Shade is excellent, base has several hair-lines and a flake but generally good.
- \$800 R-535** Blue cameo glass three piece fairy lamp signed Thomas Webb & Sons Cameo on the base. Size: 5-1/2" high. CONDITION: The shade is a darker blue than the base. It also has an 1-1/2" crack under the Lily of the

Valley carved decoration. The Base is excellent.

- \$500** Burmese shade set in a signed Clarke Fairy Pyramid crystal cup mounted on a brass plated, three legged holder. Size: 8-1/4" high. Condition: The glass is excellent. The plating is good with some of the gold dore finish remaining.
- \$1000** MOP Satin Glass Swirl Pattern Fairy Lamp. In solid deep rose. Original matching base. Size: 5" tall x 4-1/4" diameter of base. Condition: Excellent.
- \$1750** Webb Burmese Fairy Lamp Centerpiece. Fairy-size shades in matte finish with excellent color. Three diamond point signed Clarke's Cricklite bases on a bronze holder with a full figure frosted and clear glass dolphin standard. Base retains original Baccarat paper label. Size: Overall height 17." Height of dolphin is 9-1/2." Condition: Excellent.
- \$4000 R-693** (Two lamp version) Webb Burmese Double Fairy Lamp. This eight piece set features a pair of double Burmese fairy lamps with ruffled bases, a ruffled vase, a small bowl, a matching bottom and two rare pressed Burmese Clarke lamp cups. Signed "Thomas Webb & Sons, Queen's Burmese." All decorated with purple and pink Prunus blossoms. Bears label "Exhibition Item Mt. Washington Art Glass Society." Size: Overall height 11-1/2" - length 14." Condition: Excellent.
- \$1100 R-699, No. 5** Pairpoint Puffy Fairy/Night Light Glossy finish with shaded pink Poppies with green leaves. Original mahogany wooden base. Size: 8" overall height x 4-1/2" diameter of shade. Condition: Excellent.

#### **Early's Auction**

Early's Summer Art Glass Auction was held on July 31 & August 1 in Cincinnati, Ohio. As usual they offered up for auction many fine pieces of Victorian art glass including several choice fairy lamps. I was unable to attend but some of my "spies" reported the following:

- \$150 R-67** Red fairy size Nailsea with white loopings with clear crystal Clarke lamp cup. (Early-260)
- \$400 R-179 (similar)** Yellow satin glass with matching simple base. (Early-261)

<sup>3</sup> James D. Julia, Inc., Rt. 201, Skowhegan Road, P.O. Box 830, Fairfield, ME 04937 Phone: (207) 453-7125, E-Mail: jjulia@ctel.com

- \$1550 R-665** Acid Burmese fairy size dome, decorated in Ivy pattern, in clear crystal Clarke lamp cup, with Burmese quadrafold matching base with Thos. Webb & Sons, Queens Burmese-ware. paper label. 6"h x 5.75"sq. (Early-55)
- \$100** Fairy lamp 2.5"h. with diamond relief dome on clear crystal Clarke lamp cup resting on silver plated stand with three filigree feet. Marked Laranti Silver. 7.75"h. overall. (Early-360)
- \$225** Acid Burmese fairy lamp on clear Clarke's lamp cup. (Early-320)
- \$225** Porcelain three-faced "Owl" with amber glass eyes and tasseled base. Marked KPM. (Early-356)
- \$250** Acid Burmese fairy lamp on clear Clarke's lamp cup with original Clarke candle. (Early-321)
- \$400** Fairy size cranberry opalescent swirl dome resting on ornate brass tri-footed floral base with jeweled flowers and handle. (Early-696)
- \$600** Webb acid Burmese epergne, no fairy lamps, with 8"d. crimped bowl supporting three bulbous posey vases with berry pontils. (Possible part to fairy lamp epergne.) 6" overall height. (Early-618)
- \$3400** Undecorated acid Burmese epergne with 10"d. crimped bowl with four ball feet, marked "Thomas Webb & Son's Queens Burmese - S. Clarke Patent" supporting three Burmese fairy size domes on clear Clarke lamp cups and two Burmese bulbous posey holders with frosted berry pontils. 15" overall height. Similar to R-694 (Early-536)

Bid amounts do not include a 10% buyer's premium.

#### RELATED CLUBS AND SOCIETIES



The **Rush Light Club** was founded in 1932 in Boston. It is one of the oldest organizations dedicated to the study of antique lighting.

Its purpose is to stimulate an interest in the study of early lighting, including the use of lighting devices and lighting fuels, and the origins and development of each by means of written articles, lectures, conferences, exhibitions from private collections.

Regular meetings are held at various locations three times a year at which talks, demonstrations or discussions are presented and identification help is offered. Often swap and sell sessions are held in conjunction with these meetings.

A quarterly publication, ***The Rushlight***, devoted to technical articles, research, photographs, illustrations and the history, development and application of lighting, lighting fuels and accessories.

A quarterly newsletter, ***Flickerings***, providing information on Club and member activities, meeting notices, and special projects and events.

Membership is open to anyone who is a collector of antique lighting devices or a student of historic lighting. Membership runs from January 1 to December 31, no matter when one joins during the year. New members are sent all publications issued that year.

The annual dues are \$20.00 (\$25.00 foreign, \$35 foreign airmail) New members are charged a one time registration fee of \$5.00.

A membership form can be obtained from their web site at:

<http://members.aol.com//amsherwin/web.htm>

Send correspondence to:

The Rushlight Club  
c/o Amanda Sherwin,  
PO Box 75  
Southampton, NY 11969

Or e-mail Ms. Sherwin directly at:

[amsherwin@aol.com](mailto:amsherwin@aol.com)

#### INTERNET NEWS BY JIM SAPP

I have come across a few web sites that may be of interest to you, even though they are not directly related to fairy lamps. The first is a new auction site.



## E-HAMMER, On-Line Auction for Antiques and Collectibles



E-Hammer On-Line Auction will come on-line in mid-August. Their operational concept will be very similar to eBay except they will specialize in the sale of antiques, collectibles, and art. Since eBay is beginning to "pay the price of success," it may be good timing for another on-line auction to begin nibbling at their market share. If you are interested in antiques, either dealer or collector, this site may be worth watching.

Their web site, still under construction, is located at: <http://ehammer.com>.

## WWW.OILLAMP.COM ANTIQUES



As the name implies, this web site specializes in a variety of oil lamps and related items. Of particular interest to many of our members, they have offered for sale many complete miniature oil lamps.

You better hurry though as several are already sold. Even so, it a good place to visit just for the education.

In addition to antique lighting for sale, they have sections dedicated to lighting accessories, reference books, and most importantly, links to other web sites that specialize in antique lighting of all types. They are located at: <http://www.oillamp.com>.

## Maloney's Antiques & Collectibles Resource Directory - On-Line



Maloney's On-line, as the name implies, is an Internet site created to present a searchable version of the well know book, *Maloney's Antiques & Collectibles Resource Directory*.

The web site is a comprehensive listing of thousands of antiques and collectibles resources for collectors and dealers. They boast over 17,000 resources from over 2,900 categories, including: Dealers & Collectors, Experts & Buyers, Appraisers, Collector Clubs, Periodicals, Museum & Library Collections, Regional Guides to Antique Shops & Flea Markets, Reproduction Sources, Overseas Antiques Travel Tours, Auction Services, Supplier of Parts, Modern & Limited Edition Collectibles, Collector Reference Book Sources, Restoration Services, E-mail addresses & Internet Websites. Whew!!

Check 'em out at:

<http://www.maloneysonline.com>

## CLASSIFIED ADS

The opportunity to post classified ads in the Fairy Lamp Newsletter is available to all members of the Fairy Lamp Club at no additional cost on a space available basis. However, the ultimate responsibility for all transactions resulting from these ads is with the buyer and seller. We accept no responsibility for the accuracy or completeness of the ads.

### WANTED BY COLLECTORS

#### VICTORIAN CANDLE ILLUMINATION LAMPS ("CHRISTMAS" LIGHTS)

- Buy or trade for Victorian "Christmas" lights in scarcer patterns, figural styles and colors
- Seeking any historical reference material, early advertising, patent documentation, photographs and postcards relating to the manufacture and/or use of these illumination lamps



RICK & BERNY BALDWIN  
1931 THORPE CIRCLE, BRUNSWICK, OHIO 44212  
(330) 225-3576

### PARTS NEEDED

The following part is needed by Don LaFont, 331 Edenwood Drive, Jackson, TN 38301. E-mail at: [jlafont@aeneas.net](mailto:jlafont@aeneas.net).

- Clear ribbed fairy size dome to fit brass lamp holder used in Clarke's food warmers illustrated in R-Appendix B.

The following part is needed by Jim Sapp, 6422 Haystack Road, Alexandria, VA 22310-3308 (703) 971-3229 E-mail at: [sapp@erols.com](mailto:sapp@erols.com).

- R-265 Brass base. Base doesn't have to be identical to one shown but must accommodate a 2"d. shade.

The following parts are needed by Graham & Helen Pullen, Telephone/Fax: 001 44 1428 712296 or E-mail at [gdp@dircon.co.uk](mailto:gdp@dircon.co.uk).

- R-417 Dome in shape of house, any color.
- R-487 Any color large dome for existing base.
- R-609 Base only (pink/white).
- R-661 Fairy Burmese dome decorated in Woodbine pattern.
- R-663 Fairy Burmese dome decorated in Prunus pattern.

The following parts are needed by Norman & Loretta Zimmerman, (410) 653-4034.

- White Nailsea pyramid size dome.
- Gold DQMOP fairy size dome marked patent fairy w/wo lamp cup.
- Silk Cricklight shades, any quantity.

The following parts are needed by Bob and Pat Ruf, 4201 Palomino Circle, Reno, NV 89509 Phone or Fax: (702) 747-2675.

- R-549 Rainbow DQMOP dome as illustrated.
- R-568 DQMOP dome in Amberina.
- R-609 Satin fairy size dome as illustrated.

#### **FOR TRADE**

If anyone is interested in trading one of their duplicate and comparable value fairy lamps for U-91 (hanging jeweled brass candle lamp similar to R-774, but larger) let me know. Jim Sapp, 6422 Haystack Road, Alexandria, VA 22310-3308 (703) 971-3229 E-mail at: [sapp@erols.com](mailto:sapp@erols.com).

#### **FOR SALE**

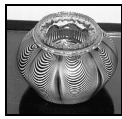
The following are being offered for sale by Graham & Helen Pullen, UK. Telephone or Fax: 011 44 1428 712296. E-mail at [gdp@dircon.co.uk](mailto:gdp@dircon.co.uk)

- Fairy, blue DQMP in Clarke cup (cracked), \$50.
- Fairy, red Nailsea top ground down with candle cup on Clarke base, \$100.
- Five clear candle cups, \$75.
- Pyramid, blue, pressed glass with matching base, \$110.
- Pyramid, clear, ribbed on tall candlestick base (2 available), \$125. each.
- Pyramid, opaque, six sided dome overshoot, embossed pattern, \$175.
- Pyramid, pale green, six-sided dome overshoot, embossed pattern (3 available), \$200.
- Pyramid, pale pink, six-sided dome overshoot, embossed pattern, \$250.
- R-8 Fairy, blue, DQMP, \$300.
- R-8 Pyramid, blue, DQMP, \$200.
- R-8 Pyramid, pink, DQMP on Clarke cup, \$190.
- R-13 Pyramid, cobalt blue, Victoria crown overshoot, cracked, \$60.
- R-13 Pyramid, cobalt blue, Victoria crown overshoot, \$300.
- R-13 Pyramid, opaque, Victoria crown overshoot (two available), \$300 each.
- R-13 Pyramid, opaque, Victoria crown overshoot cracked, \$60.
- R-100 Fairy, clear, pressed ribbed dome in large flower bowl base, \$260.
- R-684 Pyramid, Burmese epergne, single dome with four posies, undecorated, \$950.
- R-773 Pyramid, brass wall mounts with original fittings for hanging lamps, (six available) \$80 each.
- R796 Gunderson Burmese tapered dome in clear lamp cup, \$245.

The following items are offered for sale by Ken Ely, PO Box 2177, North Brighton 3186, Australia. Phone or FAX at: 011 61 039 5966183:



Item 1



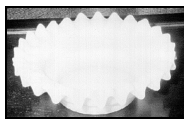
Item 2



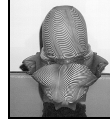
Item 3



Item 4



Item 5



Item 6

1. A pair of beautiful brass fairy lamp holders with choice of red or blue Nailsea shades. Fairy size with signed Clarke pressed bases and clear candle cups. \$850.
2. Red Nailsea pyramid size fairy lamp base only. \$400.
3. Pair of Clarke Pyramid hand lamps. Includes signed porcelain candle cup, ribbed dome, and brass handled lamp base. \$400 pair.
4. Owl night lights with opening in back for candle. \$100 each.
5. White frilled fairy lamp base similar to base illustrated in R-626. \$75.
6. Red Nailsea fairy lamp with matching base. Similar to R-650 \$800.
- Pink satin fairy lamp base. Color good. \$75.
- Undecorated Burmese Fairy Lamp on matching Burmese quadrafold base with clear Clarke lamp cup and candle cup. \$500.

The following items are offered for sale by Bob and Pat Ruf, 4201 Palomino Circle, Reno, NV 89509 Phone or Fax: (702) 747-2675.

- R-13 Cobalt overshot, Queen Victoria's Golden Jubilee crown in Clarke lamp cup. Heat crack in crown, so \$100.00
- R-137 Pink fairy-size dome with mica and four jeweled crosses and ring near top rim on matching saucer with integral candle holder. \$300.00
- R-140 Handled lamp cup in amber. Central Glass Lamp. \$75.00

- R-247 Shape is similar. Glass and saucer are pink trim with five maroon flowers on dome. Tiny chip on saucer rim. \$400.00
- R-267 Light blue, diamond pattern pyramid-size dome in silverplated lamp cup. (as pictured) \$175.00
- R-320 Opaque dome in shape of monk's head in clear lamp cup. \$295.00
- R-394 Goss night light model of "Robert Burns Cottage" as pictured and described. \$400.00
- R-402 Cast iron chalet with interior clips to hold colored glass across front windows and door. No glass. Rear hinged door. \$350.00
- R-418 Glazed and colorful painted round English cottage on round green saucer with candle depression. \$100.00
- R-448 Handled porcelain lithophane lantern with candle opening. (as pictured and described) \$750.00
- R-579 Acid Burmese pyramid-size dome in Clarke lamp cup which sits in center post of matching reversible Burmese base with upward flared piecrust rim. Top rim of base has notch for metal handle (missing and rare) and has a small chip. Base is signed "Thos Webb & Sons Queen's Burmese Ware" and "S. Clarke Patent Trade Mark Fairy." \$600.00
- R-712 Seven pink tooled glass petals surround white ceramic candle cup attached to green metal base with two tooled light green glass leaves. \$125.00
- R-744 Similar and taller. Clear double-stepped chimney dome in multi-sided rim pegged lamp cup in medium crystal candle stick. (advertised in 1909 Fostoria catalog) \$200.00
- One piece porcelain owl with opening in beak and three small holes in head plus candle opening in rear. \$95.00
  - Frosted fairy-size dome with ribbed top in metal handled base marked "Genuine Pewter" on bottom. \$100.00
  - Frosted fairy-size dome with ribbed top in taller handled base. Handle in shape of a

greyhound. Bottom of base marked "Old English Genuine Pewter." \$150.00

### REFERENCE GUIDELINES

This newsletter makes extensive use of *FAIRY LAMPS—Elegance in Candle Lighting*, by Bob & Pat Ruf, Schiffer Publishing, Ltd., 1996, in identifying fairy lamps. While this is the most complete reference book, there are others that you may also use. For consistency, we will use the following key to reference illustrations of fairy lamps. The first letter will identify the reference book followed by a plate or figure number. For example:

R-167 Refers to Bob & Pat Ruf's book *FAIRY LAMPS—Elegance in Candle Lighting*, figure 167.

A-P3-4 Refers to T. Robert Anthony's book *19<sup>th</sup> Century Fairy Lamps*, plate 3, number 4.

T-PV-8 Refers to Dorothy Tibbetts' book *Clarke's Fairy-Lamps*, plate V, number 8.

C-227 Refers to a fairy lamp number in *Clarke's 1888 catalog*, reprint by T. Robert Anthony catalog number 227.

U-10 Refers to photographic examples of fairy lamps that are not shown in any of reference books. They have been assigned an undocumented reference number in the *Undocumented Fairy Lamps* section of the newsletter. In this example *Undocumented fairy lamp number 10*.

Let me know if other reference materials need to be added to the code list.

### MEMBERSHIP

The Fairy Lamp Club is a non-profit club for collectors of Victorian and contemporary fairy lamps. The club's quarterly newsletter is published in the months of February, May, August, and November. The purpose of the newsletter is to provide a forum for members to share information about fairy lamps with

others and is greatly dependent upon the contributions of our members for its content.

To join the Fairy Lamp Club and receive the Fairy Lamp Newsletter for one year, please send \$7.50 to:

**JIM & PAT SAPP**  
**6422 HAYSTACK ROAD**  
**ALEXANDRIA, VA 22310**  
(703) 971-3229  
E-mail: [sapp@erols.com](mailto:sapp@erols.com)


-or, if you prefer:

**BOB & PAT RUF**  
**4201 PALOMINO CIRCLE**  
**RENO, NEVADA 89509**  
(702) 747-2675 phone and FAX

Back issues of the Fairy Lamp Newsletter are available for \$2.00 per issue and copies of pages from the Undocumented Fairy Lamps section may be obtained for 25 cents per page. Foreign membership dues are \$12.50.

### Thanks

Thanks to everyone who contributed to this issue of the newsletter. We really appreciate your support.



**And Now....A Little Advice** from Suzan

There are two rules for ultimate success in life:

1. Never tell everything you know.