



19th CENTURY FAIRY LAMPS

19TH CENTURY FAIRY LAMPS

by

T. Robert Anthony

Forward's Color Productions, Inc.
Manchester, Vermont

First Edition 1969

INTRODUCTION

Candle burning night lights of the 19th Century are known as Fairy Lamps. Their introduction, at the beginning of the Victorian Era, brought unusual beauty of color and artistic grace of design to lighting.

Prior to and during the first third of the 19th Century, lighting devices - the lamps and candle holders in common usage - were made of pottery, metal or clear glass. Simple plain forms were the rule and utility - at low cost - was the objective.

The candles used in Fairy Lamps are called Squatty Candles. Earlier they were known as Mortars or Vigil Lights. They were made by many firms who produced wax goods and were used for lighting for many years in the United Kingdom and on the Continent. Although there were many competitors, several very formidable, it was Samuel Clarke who improved the product and had the greatest sales.

The Clarke success was probably due to his early introduction of clear and colorful fancy shades, bases and cups made of matching glass or porcelain in which to burn the Clarke candles. Some of the bases have a glass peg on the bottom for adapting Fairy Lamps to candlesticks. Also, there were brass, art glass and silverplated epergnes and silverplated mirrored plateaus to hold from one to seven Fairy Lamps. They were very beautiful and added much to the decorations in dining and drawing rooms.

The glassware in the lamps was often very elaborate. They were made of pressed or blown glass and were sometimes decorated similar to other art glass pieces of the period.

Most candle manufacturers purchased art glass shades and bases and clear glass candle cups and bases from the leading glass and

porcelain producers in England, Europe, and the United States. Some of the glass producers signed or trade-marked their products. However, most Fairy Lamp shades are not marked and the actual maker is unknown. The clear pressed glass bases and some candle cups were trade-marked (i.e. Clarke's, P.C., Eden, etc.).

Quality squatty candles were always trade-marked. The trade-mark was impressed into the candle and/or on a printed paper wrapper. Clarke's brands were: "Clarke's Fairy Light," "Clarke's Cricklite...Samuel Clarke's Pyramid," and "Burglars Horror" - an added identification on the Pyramid size candles. Depending on size, the candles burned from eight to eleven hours. Price's "Sentinel" night light was an eight hour candle and was about the same size as "Clarke's Pyramid". Another eight hour candle was the "Waxine Night Light" made by Firma E. G. Verkade of Zaandam, Holland.

Clarke's patents covered most varieties of Fairy Lamps but there were some infringements, or at least, imitations with minor design or construction changes to avoid the patents. For example, Clarke clear crystal bases have an inner shade rim of sawtooth design which permits the air to enter the burning cavity under a shade with a smooth bottom edge. Some European and English manufacturers made the inner base rim smooth and cut air notches in the bottom edge of the shade. Another method employed was to form small air holes in the lamp base and in the shade. One English manufacturer just reversed the Clarke system by sawtoothing the bottom of the shade and making the inside rim of the base smooth.

A candle burning night light may be a Fairy Lamp even though it is not marked with one of the above trade-marks. However, although there were many makers, a Fairy Lamp must be candle burning and not use a liquid fuel.

As kerosene lamps became more popular and gas and electricity became more readily available, the sale and use of Fairy Lamps decreased. Their manufacture continued for a few years after the turn of the 19th Century, but their use was generally in the more rural areas.

The Fairy Lamps used here for illustration are from the author's extensive personal collection and represent a wide range of shape, color, size and maker. Each illustrated lamp is described and numbered from left to right and from the top row to the bottom row.

PLATE 1.

- 1 & 5 Matching pair of blue, diamond-cut Fairy Lamp shades on Clarke crystal bases. Clarke Catalogue #1889.
- 2 & 4 Matching pair of blue "GOUDA NIGHT LIGHTS" made in Holland and probably the least expensive of the times.
3. German porcelain candle stand marked "D.P.G.M., Registered" with a clear ribbed "IBBETSON" candle cup and "WEE" size candle. The Pyramid Fairy Lamp shade is white cased, blue teardrop satin glass.
- 6 & 10 A matching pair of dark ruby red (almost black), ribbed, Fairy Lamp shades on matching bases. Smooth shade rims with air notches.
7. Light yellow, swirled, blown molded, satin finish Pyramid shade on a Clarke Pyramid crystal base.
8. Blue satin, cased on white, ruffled, six inch saucer and two tone matching blue, ribbed Fairy Lamp shade. Clarke crystal base.
9. Light pink, swirled, blown molded, satin finish Pyramid shade on a Clarke Pyramid crystal base.,
- 11 & 13 A matching pair of six inch candlesticks with Clarke clear Cricklite peg bases and clear candle cups. The Fairy Lamps shades are citron Verre Moiré (Nailsea). Twelve inches high.
12. Twelve inch, beveled and cut edge, mirrored plateau with silver-plated rim and five legs. The center standard for four lamps has a dull silver finish. The lower lamps are seven inches above the mirror and the top center lamp is nine and one half inches above the mirror. The four Fairy Lamps have Rose Verre Moire (Nailsea) shades, Clarke crystal bases and clear candle cups.



PLATE 2.

1. Two-tone, pale blue, six inch diameter, ruffled base and matching ruffled shade Fairy Lamp. Blown glass acid-finish. The shade has three air notches. Clear Cricklite base and clear candle cup. Six inches high.
- 2 & 4 A matching pair of Amber diamond-cut Pyramid shades with matching bases which are marked RD No. 92571 indicating they were made under a patent issued to Stembridge and Co., Holborn, England in 1888.
3. Hobstar night light stand, nine inches high, with a three and one- half inch square base. The Pyramid size Fairy Lamp clear shade has a saw-tooth bottom rim and is marked R.D. No. 92571.
5. Lemon yellow, five inch, ruffled, tear drop base with matching ruffled shade Fairy Lamp. The base has a smooth shade rim and the shade has four air notches. Clear glass candle cup with K.K. PRIV APOLLO NACHTLICHTER candle.
6. Rose Verre Moire (Nailsea), large scalloped edge, six inch base and matching shade Fairy Lamp. Clarke crystal base and ribbed candle cup.
7. DARTE PAL ROYAL NO. 28, white, glazed porcelain matching shade and base Fairy Lamp. The shade is decorated with a fired-on spray of pansy leaves and flowers. Both the base and shade are trimmed in gold. There are six air vent holes in the side of the base, four in the bottom of the base and twelve in the shade
8. Matching, rose Verre Moiré (Nailsea), scalloped edge, six inch base and shade Fairy Lamp. Clarke crystal base and ribbed candle cup.
9. Deep rose pink, satin, cased white Fairy Lamp shade with six pointed stars blown-molded on the inside of the shade. The matching six inch saucer has a ruffled edge. Clarke Cricklite base and clear candle cup.
11. Eleven inches high, unlined, Spatterglass Fairy Lamp with fired on gold decorations. The clear glass, pegged candle cup, four inches high and two inches in diameter sets into the stem at the bottom of the bulbous base. Said to be of Central European origin. The squatty candle is somewhat smaller than a Clarke Fairy and slightly larger than a Clarke Pyramid
12. Light pink, satin, cased over white, matching Fairy Lamp saucer and shade. The saucer is fluted and the top of the fluting is frosted. The four inch, unmarked, clear base is two extra inches deep to form a combination base and candle cup
13. Cranberry, cased over clear glass, Pyramid shade with fourteen handtooled, applied, clear petals. Pyramid base with well used candle



PLATE 3.

1. Frosted overshot on clear, Pyramid Fairy Lamp shades on a Clarke Pyramid crystal base. Clarke Catalogue #2742/7.
2. Light amber Fairy Lamp shade with matching amber base. Seven inches high.
3. Dark ruby red Fairy Lamp shade with matching deep ruby base and two inch deep ruby candle cup. Seven inches high.
4. White milk glass, Pyramid size Fairy Lamp shade on matching milk glass base. The shade has two air notches.
5. Matching blue base and shade Fairy Lamp. The base is two tiered, vertical ribbed; the shade has a type of thumb print on the inside. Pyramid size clear candle cup.
6. Pastel green, blown molded, diamond pattern, frosted Pyramid shade on a Clarke crystal Pyramid base.
7. Oyster white, acid-finish Fairy Lamp shade with looping swirls. The Clarke base is frosted. Clear ribbed candle cup. The seven inch ruffled saucer matches the shade
8. Pastel pink, blown molded, diamond pattern, frosted Pyramid shade on a Clarke crystal Pyramid base.
9. Matching vaseline base and shade Fairy Lamp. The base is two tiered, vertical ribbed; the shade has a type of thumb print on the inside. Pyramid size clear candle cup.
10. Nine inch, Waterford candlestick with an unusual removable, snap- on, stamped, brass plated metal base and top fittings. The Fairy Lamp shade is dark rose pink, acid-etched finish with a Clarke Cricklite peg base and clear candle cup.
11. A fourteen inch, beveled and cut edge, mirrored plateau with silverplated rim, six legs and a brass center standard with five lamp holders. The four lamps at the lower level are six and one half inches above the mirror and the center top lamp is ten inches above the mirror. The Fairy Lamps are Clarke #1889, clear flint, diamond-cut shades with Clarke crystal bases and clear plain candle cups. This epergne is very similar to Clarke's Catalogue #319
12. Eight inch, molded and pressed, clear glass candlestick with Clarke Cricklite pegged base and acid-etched, ribbed, pale blue Fairy Lamp shade. Twelve inches high.



PLATE 4.

1. Deep blue, acid-finish, ribbed and swirled Fairy Lamp. Clarke clear candle cup.
2. Pressed, clear glass - Pyramid Fairy Lamp shade with eight applied 1/2" diameter jewels in red, green, blue and Yellow on a Clarke Pyramid base with a Pyramid candle. The 7" high porcelain base is decorated with trees and leaves. Overall height is 11".
3. Two-tone, deep rose pink and light pink striped effect, cased, with acid-finish clear glass Fairy Lamp with matching ruffled shade and base. The base is 5" in diameter with an IBBETSON candle cup and Pyramid size candle.
4. Light green, blown glass base and shade bottom. The hand formed, applied shade top is clear to white in sixteen inner or outward formed loops - none exactly the same. The base has a smooth shade rim. There are three air notches in the shade. The shade is 5" wide and 5" high.
5. White to pale yellow, Coralene decorated Fairy Lamp shade on a weighted brass base with a pronged shade fitting (said to be Mt. Washington from about 1890). When purchased it had a partly burned "Wee Fairy Light" in the base cup.
6. Six inch square, blue, acid-finish, ruffled base and shade Fairy Lamp with clear glass, 3" diameter combination shade, base and candle cup.
7. Silverplated candle holder, 4" high, with a 3" square base and a round silverplated shade converter. The colored Lithophane shade has four scenes depicting a boy and a girl in the forest. There are nine 1/8" air holes in the bottom of the shade. Overall height is 8".
8. Light green, blown glass base and shade bottom with a lighter green and amber, hand-formed, looping applied shade top. There are three air notches in the shade and the shade rim in the base is smooth. The top forming is very erratic.
9. Pink and opaque striped, blown, acid-finish Fairy Lamp shade with Clarke crystal base and clear ribbed candle cups.
10. Blue and opaque striped, blown, acid-finish Fairy Lamp shade with Clarke crystal ribbed base and clear candle cup. The ornate, 7" high, three-legged black stand has a looping brass chain and ball and is attributed to the A. J. Weed & Co., N. Y. who made "Venetian Iron" Fairy Lamp and Princess Lamp stands in the 1880's-1890's. Eleven inches high.
11. This silverplated elephant stand is 5' high and is marked W.W.H. & Co. It holds a Clarke Cricklite, 3/8" diameter, pegged crystal base (no wooden plug). The Fairy Lamp shade is Clarke ruby, diamond-cut, three- mold pressed glass #1889.
12. Lemon yellow, white and green opaque striped, blown, acid finish Fairy Lamp shade with Clarke crystal ribbed base and clear candle cup. The black, seven inch stand matches the stand on #10.
13. Blown, light blue and opaque striped, acid-finish Fairy Lamp shade with Clarke crystal base and ribbed candle cup.



PLATE 5.

1. Very pale pastel green Verre Moiré (Nailsea) Fairy Lamp shade, Clarke crystal American Patent marked base and clear candle cup.
 2. Light green, swirled, blown molded, satin finish Pyramid shade on a Clarke Pyramid crystal base.
 3. Pink porcelain light house with formed brass top fitting and ivory carrying ring. Seven inches high. It is marked "Depose Pantin Reg. 120760".
 4. Medium green swirled, blown molded, satin finish Pyramid shade on a Clarke Pyramid crystal base.
 5. Very pale pastel blue glass Fairy Lamp shade decorated with three different, acid-etched, scenes on a background of small flowers and leaves. Clarke crystal base and clear candle cup.
 6. Red, brown, yellow and white, "Mottled" and swirled, white inner cased Fairy Lamp shade with matching base and clear glass candle cup.
 - 7 & 9. A matching pair of amber diamond cut Pyramid shades marked RD No. 92571, on Clarke crystal bases.
 8. Opalescent to rose pink, cob-webbed on the outside, seven inch diameter, reversible, deep fluted and scalloped base. The Pyramid size Fairy Lamp has an opalescent shade with two air notches and a matching candle dish with a Pyramid size candle.
 10. Fairy Lamp shade in two tones of pink, pale yellow and white swirled and ribbed spatter which is white lined. Clarke crystal Cricklite base.
 - 11 & 13. Matching pair of amber glass Fairy Lamps decorated with fired on enamel leaves and flowers. The matching amber pegged Candle cups are two inches in diameter and five and one-half inches high. The peg rests in the stem at the bottom of the bulbous base. Probably made in Central Europe. Twelve inches high.
 12. A twelve inch, beveled and cut edge, mirrored plateau with a silverplated rim and ten ornate legs. The center Burmese standard is brass trimmed, with a Burmese rose bud top and holds four lamps and three Burmese flower vases. The three lower lamps are seven inches above the mirror and the upper center lamp is ten inches above the mirror.
- The four Fairy Lamps have Mt. Washington Burmese shades (the flower vases and center standard are Mt. Washington Burmese also), Clarke crystal bases and clear candle cups.

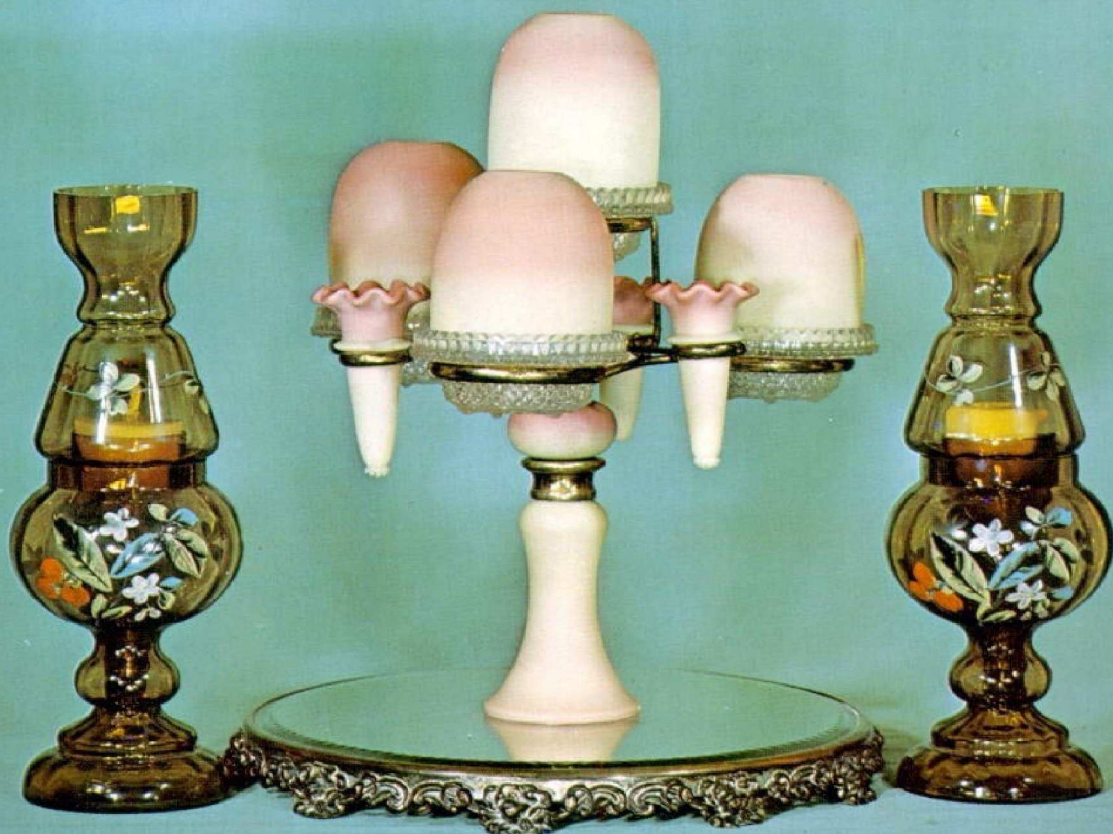


PLATE 6.

1. Blown, swirled, green on clear cased Spangle glass Pyramid size Fairy Lamp with mica flecks and dark green threaded drag loops. Clarke Pyramid base on an ornate, brass plated, eleven footed pedestal. "Waxine" candle.
2. Matching, acid-etched, camphor Fairy Lamp base and shade. The base pedestal is swirled ribbed and the shade is vertically ribbed with a swirled effect. Attributed to the Central Glass Works in Wheeling, W. Virginia.
3. Red, brown, yellow and white, "Mottled" and swirled, white inner-cased Pyramid Fairy Lamp with matching base and shade (See Plate 5, Lamp #6) on a Wm. Rogers Mfg. Co., Pyramid size, silverplated stand. -Nine inches high.
4. Citron Verre Moiré (Nailsea) shade with a Br. Clarke S.G.D.G., Portieux clear base and candle cup.
5. "Peacock" Fairy Lamp. Glazed porcelain, with fired-on colored enamel decorations. There are nine air holes at the end of the plumage. "Wee Fairy Candle". Three inches high.
6. Pastel blue, opalescent, blown-molded, six inch, ruffled saucer and matching five inch shade Fairy Lamp with clear Clarke base and candle cup.
7. Acid-finish, pale pink to rose, six inch diameter, ruffled dish and ruffled jeweled shade Fairy Lamp. Six inches high. There are two green and two red one inch diameter jewels set in ornate brass rosettes which are held in place by prongs on the inside of the shade. Clear glass candle cup.
8. Acid-finish, mottled, pastel blue and white, blown-molded, matching ruffled base and shade Fairy Lamp. The base is six inches in diameter and the pedestal is two inches high. Clarke crystal base and clear candle cup.
- 9 & 11. his matching pair of clear flint candlesticks, seven inches high, with four inch square bases, are converted to Fairy Lamps with Clarke crystal Cricklite peg bases and clear glass candle cups. The clear glass Cricklite shades have Cricklite brass base rings. The Clarke beaded silk overshades, with pink roses and green leaves and stems, have the Clarke patented brass fitting for the top of the Cricklite shade - similar to Clarke Catalogue #19537. Overall height is 13".
10. Blue, blown-molded, matching ruffled saucer and shade Fairy Lamp. The saucer is six inches in diameter. The shade has fired on enamel and gold decorations. Clear glass candle cup. Overall height is 7".



PLATE 7.

1. Lithophane Fairy Lamp shade with three panel scenes. Clarke crystal ribbed base and candle cup.
2. Onion Meissen, six inch diameter, pedestal Fairy Lamp base with a Lithophane and Meissen shade. The three panels on the shade are scenes of mountains, castles, rivers and forests. White porcelain candle cup.
3. Two scene "Little Miss Muffet" Lithophane and glazed white porcelain shade and base Fairy Lamp with fired-on gold decorations. The matching porcelain base and candle cup are molded in one piece. "Fairy Light" candle.
4. Blown, peacock blue Fairy Lamp shade with matching molded base. The shade has enameled white rose decorations with touches of gold - both fired-on. The shade rim has notched air vents.
5. Blown, medium green Fairy Lamp same as #4.
6. Blue Pearl Satin glass Fairy Lamp shade and matching base. The extended shade top increases the height of the lamp to six inches. Clear glass candle cup and notched shade rim.
7. Rose Pearl Satin glass Fairy Lamp shade with matching base and clear candle cup. The shade is decorated with grapes and leaves.
8. Tan Pearl Satin glass Fairy Lamp shade with matching base and candle cup. The shade is decorated with wild roses and leaves.
9. Two-tone peacock blue, diamond ribbed, satin, cased on white Fairy Lamp shade on a Clarke crystal base. The three-legged brass stand is four inches high. Overall height is nine inches.
10. Clarke, twenty inch high, brass Epergne #553 with black enameled center standard and four Clarke Fairy Lamps. The lamp shades are vertical ribbed, all from the same mold; three are acid-etched and one is clear. All shades are trademarked S. Clarke's Fairy. The crystal bases and ribbed candle cups are marked Clarke.
11. Mt. Washington Peach Blow, deep ruffled saucer base and ruffled shade Fairy Lamp on a three-legged brass stand. The base and shade ruffles are hand-tool formed and are quite uneven in several places.



PLATE 8.

1. Pale yellow, satin, case over white, swirled and crimped top Fairy Lamp shade with Clarke crystal ribbed (352296) base and ribbed candle cup.
2. Thos. Webb and Sons, ruffled top Peach Glass (Peach Blow) Fairy Lamp shade. The seven inch diameter Clarke crystal saucer has the attached shade base and candle cup.
3. Emerald green Fairy Lamp the same as # 1.
4. Mother-of-pearl, diamond-quilted, matching shade and saucer Fairy Lamp. Both are white cased, and toned from white to pink to deep rose to their fluted tops. The inside shade rim of the saucer is smooth. There are four air notches cut in the bottom rim of the shade. Clear candle cup.
5. "West Virginia Peachblow" (Hobb's, Brockunier's "Coral"), matching, four inches deep, eight inches in diameter, fluted and ruffled bowl with matching fluted shade Fairy Lamp. The bowl and shade are cased in the palest of yellow-white. The bowl shades from pale yellow-white to pale pink to deep rose. The shade ranges from pale pink to deep rose. There is an inner, clear, pressed, five inch diameter dish (which requires an engineer to put in and take out) with a half-inch high rim which holds the Clarke crystal ribbed base and ribbed candle cup.
6. Mother-of-pearl, diamond-quilted, six inch diameter, cased white, shallow fluted saucer with matching shade Fairy Lamp in deep pink rose. Clarke crystal ribbed base and candle cup with Clarke "Fairy Light" candle.
- 7 & 11. A matching pair of petal Pyramid size Fairy Lamps. The shades are pink, cased in clear glass with eighteen applied, hand tooled, clear petals in three tiers. Clarke Pyramid clear base.
8. Thos. Webb and Sons Burmese Fairy Lamp with matching Burmese Clarke base and clear candle cup.
9. Thos. Webb and Sons Burmese Fairy Lamp. The pedestal, six inches high, is in two sections joined at the brass ferrule and held by a nut in the inner bottom of the upper decorated, ruffled base. The Burmese shade is two-thirds salmon pink and one third pale yellow. Clarke crystal base and plain "Cricklite" candle cup. (FRONT COVER).
10. Mt. Washington Burmese Fairy Lamp. The Burmese saucer is 6' square and holds the Clarke Burmese base (which still has the paper label "American Patent Nov. 9, 1886 #352,296"). The Burmese shade is about two-thirds pale yellow and one-third salmon pink.

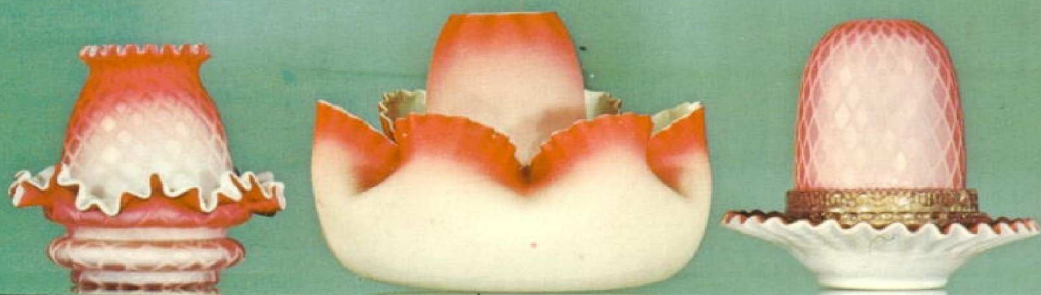


PLATE 9.

1. Pastel blue and clear striped and swirled, satin, cased on clear glass, Fairy Lamp shade with Clarke crystal base.
2. Cranberry overlay, cut to clear and polished Fairy Lamp shade on a Clarke crystal base (possibly Dorflinger).
3. Two-toned blue and white, blown Fairy Lamp shade and Clarke crystal base. Six inches high.
4. Thick, blown-molded, Fairy Lamp shade in dusty pink on a clear glass base. The bottom rim of the shade and the inner base rim are smooth and there are six air vent holes in the base side. Clear glass candle cup.
5. Pure white, swirled, blown molded, satin finish Pyramid shade on a Clarke Pyramid crystal base.
6. Clear amber and white striped, cased over clear glass Fairy Lamp shade on a molded ribbed base. The candle cup is cast in and with the base, "Fairy Light" candle.
7. Pink porcelain, shell pattern, Pyramid size shade with matching candle dish.
8. Yellow overshot, blown-molded Fairy Lamp shade on a Clarke crystal base. The base is the same design and shape as the base in Plate 12 Number 1, but the inner shade rim is sawtoothed.
9. A very unusual Clarke Cricklite shade and large size glass peg base both in matching pale blue frosted finish with a clear candle cup. The silverplated candle stick is thirteen inches high.
10. Ten inch, beveled and cut edge, mirrored plateau with silverplated rim, four legs and a brass center standard with four lamp holders. The three lamps at the lower level are five inches above the mirror and the center lamp is seven inches above the mirror. The four Pyramid Fairy Lamps have ruby, diamond-quilted, pressed glass shades with Clarke Pyramid bases.
11. Seven inch high, matching, diamond-cut candlestick and Clarke Cricklite peg base with clear glass candle cup. The Fairy Lamp shade is pastel green Verre Moire' (Nailsea).



PLATE 10.

1. Central Glass Works -matching, two piece, pastel green acid finish Fairy Lamp. The applied handle base is deep ribbed horizontally with a chrysanthemum base pattern. The shade has a sawtooth edge and is vertically ribbed.
2. Mother-of-pearl, diamond-quilted, chartreuse, cased white, satin glass Fairy Lamp. The down-turned, ruffled saucer has a 21/2" diameter frosted base. Clarke crystal base and clear ribbed candle cup with "Fairy Light" size candle. The paper label is "Trademark Clarke's".
3. Central Glass Works matching, three piece, amber Fairy Lamp. The saucer is spiral ribbed The applied handle base is deep ribbed horizontally with a chrysanthemum base pattern. The shade has a sawtooth edge and is vertically ribbed.
4. Pale blue, Verre Moiré (Nailsea) Fairy Lamp shade on Clarke crystal base with clear glass candle cup.
5. Clear diamond-cut, vertical rib Stenbridge. & Co. flint shade with sawtooth bottom edge on a Clarke crystal Pyramid base.
6. Thos. Webb and Sons chartreuse cameo Fairy Lamp with matching shade, 51/2' square saucer, and Clarke crystal base and ribbed candle cup.
7. The "Smiling Monk" has the same face on both sides with pastel colors on bisque. Three inches high.
8. "The Peppermint Candy" Fairy Lamp. Vertical ribbed, cased clear over white, satin finish with applied horizontal red loopings on the base and shade. Clarke sawtooth shade rim base with Clarke ribbed candle cup.
9. Sunburst, cut and beveled, 5" diameter mirrored plateau with 411 high brass center standard and pierced brass holder. The Pyramid Fairy Lamp shade is mother-of-pearl, pale blue, diamond-quilted, cased white satin glass, on a Clarke straight side Pyramid clear glass base.
10. Green, cased over clear glass and overshot Pyramid Fairy Lamp with cranberry, applied scalloped base and six feet. Pyramid candle.
11. Colored Lithophane Fairy Lamp shade with three panels of religious scenes. The cast brass candlestick base has gold and colored enamel decorations on a porcelain insert. Clarke clear Cricklite peg base with clear candle cup and "Fairy Light" candle.
12. Blown molded, Pyramid shade in hobnail white with clear glass Pyramid base. Clarke Catalogue #1897. Sterling silver base. Overall height is 6'.
13. Doulton Barslin #25205, 4V2" diameter base with a 4,' high brass standard and pierced brass base holder. The Pyramid size Fairy Lamp shade is peacock blue, mother-of-pearl, diamond quilted, satin cased over white on a Pyramid size "EDEN LIGHT", clear glass base.



PLATE 11.

- 1 & 3. A matching pair of Fairy Lamps with matching ruffled bases and shades. Two-tone, medium blue, vertical striped effect; cased, with acid-finish clear glass. Five inch diameter bases with clear candle cups marked W. T. & Co. Pyramid size candles.
2. The Fairy Lamp shade is white Verre Moire' (Nailsea) with a white satin, ruffled, 3" high and 5' diameter base, with five frosted feet. The clear glass base is marked P.C. and has the Clarke type sawtoothed inner base rim.
4. Olive green, diamond-quilted Fairy Lamp shade on a Clarke crystal base.
5. Ruby red, blown, Pyramid size Fairy Lamp with matching ruby base.
6. Blue, molded, cased in clear glass and overshot in light blue and white Fairy Lamp shade on, Clarke crystal base.
7. Frosted overshot Pyramid shade and Pyramid crystal base. Clarke Catalogue #2669,5. Called "Sexagon" pattern.
8. Usually referred to as the "Cross Fairy Lamp". The matching shade and base are white porcelain with overshot pink and mica flecks. The four crosses are jeweled; one each in red, green, blue and amber jewels.
- 9 & 11. A matching pair of eight inch high square base and top candlesticks which have been converted to Fairy Lamps. The candlesticks have wild rose copper wheel engraving on the four sides of the column and base. The lamp bases are Clarke clear Cricklite with three-quarter inch round glass pegs and Clarke candle cups. The Clarke clear Cricklite shades also have fancy metal half-shades and crocheted overcovers.
10. A ten inch, beveled and cut edge, mirrored plateau with silverplated rim, four legs and a brass center standard with five lamp holders. The four lower lamps are five inches above the mirror and the center lamp is seven inches above the mirror. The five Pyramid Fairy Lamps are Clarke's # 1890, clear flint, diamond cut shades with Clarke Pyramid bases. This Epergne is very similar to Clarke's Catalogue #3191/2.



PLATE 12.

1. Matching Fairy Lamp cut shade and Clarke clear, flint, diamond-cut base. There are four small diamonds in each larger diamond in the design. The shade rests on four molded base holders and does not have the usual sawtooth Clarke inner base rim.
2. Pastel blue, blown satin, cased in dark blue, ruffled shade and matching base Fairy Lamp. Clear glass candle cup with "Fairy Light" candle. The lamp sits on a Eurica Silver Co. #215, five inch four legged, silverplated mirror plateau.
3. Cranberry, spangled with white and mica, cased with clear glass Fairy Lamp shade on a Clarke crystal base. Clarke "Fairy Light" in a clear glass cup.
4. Peacock Blue Pearl Satin glass Fairy Lamp shade and six inch matching fluted saucer. The shade is decorated with flowers, buds and leaves. Clarke crystal ribbed base and ribbed candle cup.
5. White to lemon-yellow, mother-of-pearl, diamond-quilted, cased white satin glass Fairy Lamp shade with matching saucer and matching candle cup. The saucer is fluted, the candle cup has a smooth inner base rim and the shade has irregular air notches ground in the rim.
6. Mother-of-pearl, diamond-quilted, pale blue, cased over white, ruffled base and shade Fairy Lamp. The base has a smooth inner shade rim and there are four notches cut into the shade. Clear Clarke candle cup.
7. Same design as Lamp #11, but the pedestal base is all frosted and is a deeper rose pink in color. Probably made by the same manufacturer from a different batch of metal.
8. Dark blue, pressed, ribbed Pyramid shade on a crystal Pyramid base.
9. "J.F.C. Extra Plate", nine inches high, silverplated stand. The base is 4 1/2 " in diameter. The Fairy Lamp is matching white Bristol with fluted pink base and shade top with blue and gold fired-on flower decorations on the shade. The Clarke ribbed side, base and ribbed candle cup have the American Patent date and number: Nov. 9, 1886 #352296. Overall height is thirteen inches.
10. Blue, blown molded, hobnail Pyramid shade with crystal Pyramid base. Clarke Catalogue #1897.
11. Light pink, acid-finish, satin glass pedestal Fairy Lamp with matching pink satin swirl base, Fairy Lamp shade and clear glass candle cup. Fourteen inches high. The pedestal has eight applied frosted leaves; four forming the legs and four upturned over the base for decoration. Matching frosted formed leaves completely surround the upper rim of the pedestal.



PLATE 13.

1. Blue, mother-of-pearl, diamond quilted, satin cased over white Pyramid Fairy Lamp shade on a Clarke crystal Pyramid base. The brass stand has eleven ornate feet.
2. Extremely heavy, six inch diameter, clear crystal ribbed pedestal dish base with a sawtoothed inner shade rim. The shade is vertically ribbed clear glass with a smooth rim.
3. Thos. Webb and Sons "Queen's Ware" decorated, Burmese, Pyramid size Fairy Lamp. The base is pink, gold trimmed, Doulton - numbered 1516.
4. Cranberry, flashed, blown and engraved Vintage design Fairy Lamp shade on a Clarke crystal base with clear glass candle cup.
5. A ten-inch high Sheffield silverplated candlestick with a Clarke four lamp holder Fairy Lamp adapter. The four Fairy Lamp shades are ruby diamond cut, Clarke #1889. Clarke crystal bases with clear candle cups.
6. Amethyst, flashed, blown and engraved Bursting Star design Fairy Lamp shade with a Clarke crystal base.



PLATE 14.

1. Clear, pressed design, Baccarat Fairy Lamp with six inch diameter saucer base. The shade and saucer base are decorated with fired-on gold. (Same mold as Lamp #3). Clear glass candle cup.
2. Clarke No. 293 Ormolu with cut and beveled mirror and green plush, 4" diameter base. Deep rose, cased over white, mother of-pearl, diamond-quilted, satin Pyramid shade and Clarke clear glass base. Pyramid candle.
3. Baccarat, peacock blue, pressed design, six inch diameter saucer base with matching Fairy Lamp shade. Clear glass candle cup.
4. & 6 Matching pair of Baccarat, pressed design, Amberina Fairy Lamps. The bases are five inches in diameter and the flared-top shades are four inches high. The shades have five one-quarter by one-half inch notched air vents and set on a smooth shade rim in the bases. Clear glass candle cups.
5. Baccarat Amberina, matching, pressed design shade and saucer base Fairy Lamp. The shade is the same mold as the shade on Lamps #1 and #3, but the scalloped edge on the base has a more pronounced up-flare.
- 7 & 10. A matching pair of heavy base, nine inch, silverplated candlesticks (numbered 381) converted to Fairy Lamps. The Clarke crystal bases have three-eighth inch glass pegs inserted into a three-quarter by three-quarter inch round wooden plug - frequently found on this type of Clarke peg base. The Fairy Lamp shades are ruby, diamond-quilted pressed glass. The overall height of each lamp is fourteen inches.
- 8 & 9. This matching pair of nine inch high Fairy Lamps are acid etched, frosted to pink at the ruffled top, and decorated with fired-on gold. The bases are five inches in diameter. The clear candle cups take a candle almost twice the size of a Clarke Fairy Light - said to be of French manufacture.

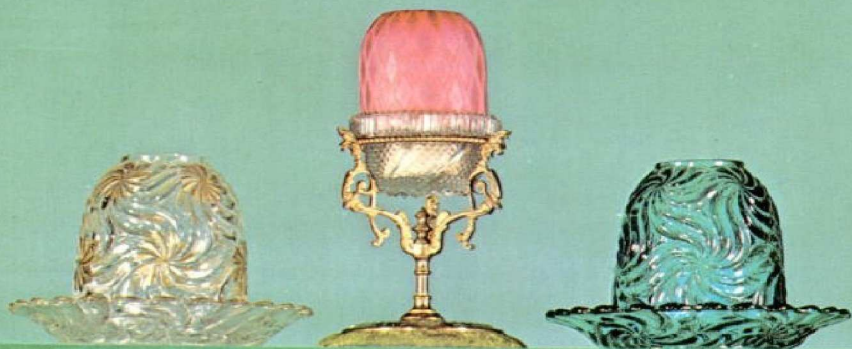


PLATE 15.

THE FORMAL DINING TABLE SETTING

The centerpiece is a six inch square bottom, Waterford Crystal base, with two decreasing size squares on a twenty-inch high hexagon center standard and topped with a Sheffield fitting.

The Clarke-Sheffield seven lamp holder has a horizontal spread of twenty-one inches, with six lamps on the lower level and one center top lamp. The overall height is thirty-three inches.

The seven Fairy Lamps have Clarke clear Cricklite shades; clear, plain Cricklite bases; and, clear candle cups.

The two matching lamps for the ends of the table have five inch, hexagon bases with a bulbous center standard twelve inches high - to a metal fitting which holds a screw-on Clarke Cricklite peg base. The glass peg of the base is held to the fitting with plaster of paris.

Attached to the base of the standard is a metal two-armed fitting holding the two flower vases which match the design in the base and column.

The Fairy Lamp shades are Clarke clear Cricklites and the candle cups are clear glass. Overall height is nineteen inches.

The two matching lamps for the sides of the table have four inch, hexagon bases with seven inch, hexagon standards with a metal fitting to accommodate the screw-on Cricklite peg base.

The Fairy Lamp shades are Clarke clear Cricklites. The overall height of the lamps is fifteen inches.

All the Fairy Lamp shades in the setting have Cricklite brass shade rings.



PLATE 16.

1. Pale blue and pale green applied leaf art glass, six inch bottom base with six legs and matching pale green Pyramid, diamond cut shade. The Clarke clear base has a two inch diameter bottom with one and one-half inch high straight sides and a three inch top diameter.
2. This brass plated, cast metal figure stands eight inches high and is marked L&L 7652. The Fairy Lamp shade is Clarke # 1889, amber diamond-cut; the base is Clarke crystal and the candle cup is plain glass.
3. Camphor, acid-finish, vertically ribbed Pyramid Fairy Lamp shade on a Clarke Pyramid crystal base. The saucer is scalloped Amberina, six inches in diameter.
4. This is NOT a Fairy Lamp. It is included to illustrate the similarity to the shape and basic principle of combustion. An clear glass. The base has four, one-half by one inch, oval air vents with scalloped edges permitting air to enter under the base. Pegged liquid fuel font with a string wick burner, inserted into the hole in the center of the base, and a fairy lamp type shade. This is a Chinese opium smoker's lamp.
5. This all brass, weighted base, four lamp Epergne is nineteen inches high and sets in a matching nine inch brass dish. The stem for the top lamp is removable at the upper ball, permitting the use of only three lamps if desired. The four Fairy Lamps have Blue Verre Moiré (Nailsea) shades, Clarke crystal bases and ribbed Clarke candle cups.
6. Pastel green, matching Fairy Lamp shade and base. Both are partially acid-etched and decorated in white enamel and gold. Also, there are blue flowers on the shade. The shade is notched on the smooth edge and fits on the outside rim of the base. The candle cup is two and one-half inches deep to compensate for the depth of the base.



PLATE 17.

- 1 & 3. A matching pair of clear Fairy Lamp shades engraved with the Princess Pattern. Clarke crystal bases.
2. A square base, nine inches high, Hobstar nightlight stand with vertical ribbed English shade.

Box of Candles

"By Her Majesty's Royal Letters Patent." The "Fairy" lights for burning in the "Fairy" lamps semi-incandescent - for lighting Ball & Drawing Rooms, Conservatories, etc. Will burn ten hours.

Samuel Clarke, Patentee,
"Pyramid" and "Fairy" Light Works Child's Hill London N.W.

Lamp Box

Clarke, diamond-cut, clear flint Pyramid shade and base, Pyramid candle in the original box and numbered Pattern 1890. The box label shows Price's Patent Candle Co., Ltd. as successor to Clarke's Pyramid and Fairy Light Company. (Selling Price, in Pencil, 2.50).

- 4 & 5. A matching pair of clear Fairy Lamp shades engraved with the Buzz Star pattern. Clarke crystal bases.
6 & 7. A matching pair of clear Fairy Lamp shades engraved with the Lace pattern. Clarke crystal bases.
8 & 9. A matching pair of square bases, nine inches high, Hobstar nightlight stands with Hungarian blown shades engraved with the American Eagle,
10 & 11. A matching pair of square bases, nine inches high, Hobstar nightlight stands with Hungarian blown shades engraved with open-eyed owls.



PLATE 18.

1. Clear glass candle cup, unmarked, with a Clarke "Fairy Light" candle.
- 2 & 3. Clarke "Fairy-Pyramid" candies with plaster base ("Burglar's Horror")
N.B. No water required.
4. Clark "Fairy Light" candle, "will burn 10 hours".
5. "IBBETSON" clear glass ribbed candle cup.
6. Clarke clear plain glass "Cricklite" candle cup.
7. Clarke clear plain "Cricklite" base.
8. Clarke crystal peg base, with glass peg and wooden plug. (Sometimes marked "Cricklite").
9. Candle cup for Pyramid size base, unmarked.
10. Clarke "Pyramid" crystal base.
11. Clarke crystal base marked "Br CLARKE S.D.G.D. PAR TIEUX"
probably made for Clarke by Baccarat.
12. Clear ribbed candle cup marked " U. S. PATENT NO. 352296 Nov. 9, 1886" "S. CLARKE FAIRY TRADEMARK".
13. Clarke crystal base marked "S. Clarke Fairy Trademark" (This same design base may also be marked "Cricklite").



BACK COVER

A molded, clear glass, 8' base Epergne thirty inches in height. The center standard is twisted clear glass with an applied rib of green glass, centered in and attached to a three-part brass work of flower bud stems and leaves. The three flower buds are ribbed clear glass. The top Clarke brass holder is designed to hold five lamps. The five Fairy Lamps have Citron Verre Moiré (Nailsea) shades, Clarke plain Cricklite bases and clear candle cups.

