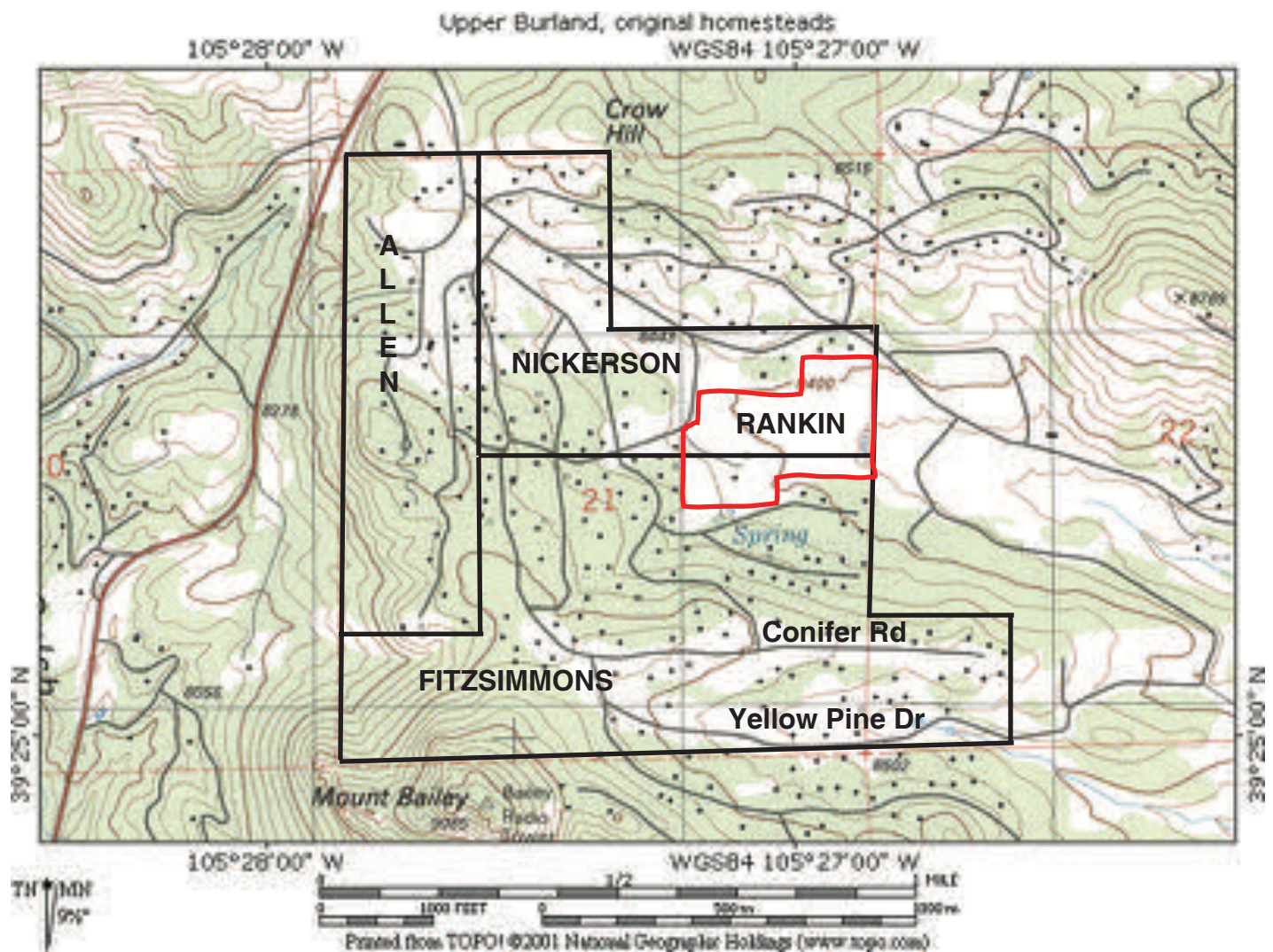


# Rankin Ranch

## Park County Historical Society Field Trip

### August 24, 2014



## A Brief History of Ownership

The Rankin Ranch consists of 39.16 acres. It is between Burland Ranchettes and Burland Meadows subdivisions, just above the baseball fields on Bluebird Drive.

The land on which it sits was originally homesteaded by Charles Nickerson in 1883. Charles Fitzsimmons homesteaded land adjacent to and south of Nickerson's land. In 1919, Nickerson sold 80 acres to Fitzsimmons; the Rankin Ranch land was included in that sale.

Fitzsimmon's son, Perry Phillip Fitzsimmons, had

a house built in 1929; that is now the Rankin's house. Other out buildings were also made, as well as a corral.

Perry made a living on the land, raising lettuce and potatoes, and (apparently) cattle.

In 1957, Perry sold the land to the Burkes and Weaklands, who created Burland Ranchettes. Burke's son Walter and his wife Marilee moved into Perry's house, and remodeled it. Walter's family moved to a house just upstream from the lakes in lower Burland Ranchettes. Don and Eldred Rankin bought it in 1963.

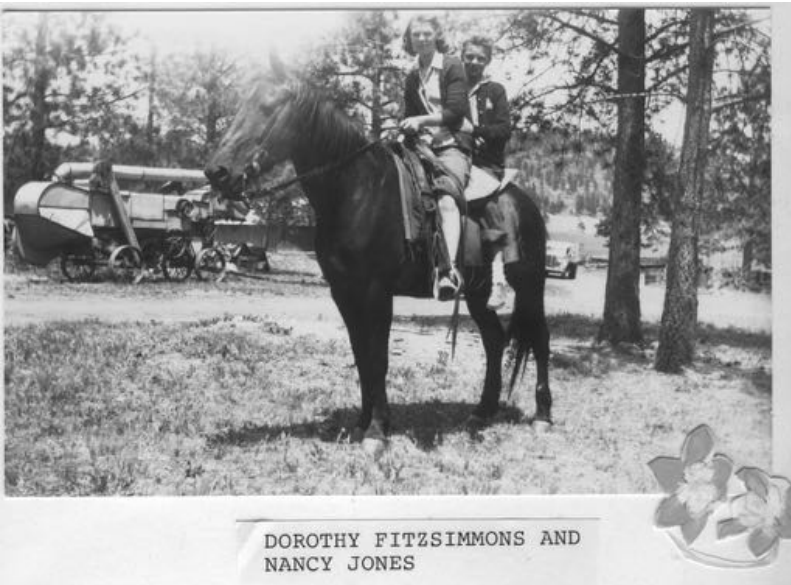
## Old Photos and New Views

The four black and white photos came from the Helen Purlinton Jones scrapbook, that was donated to the Park County Historical Society. The Jones girls

were Helen's daughters; the Fitzsimmons girls were Perry's daughters. The color photos show about the same view as it looks today.







DOROTHY FITZSIMMONS AND  
NANCY JONES





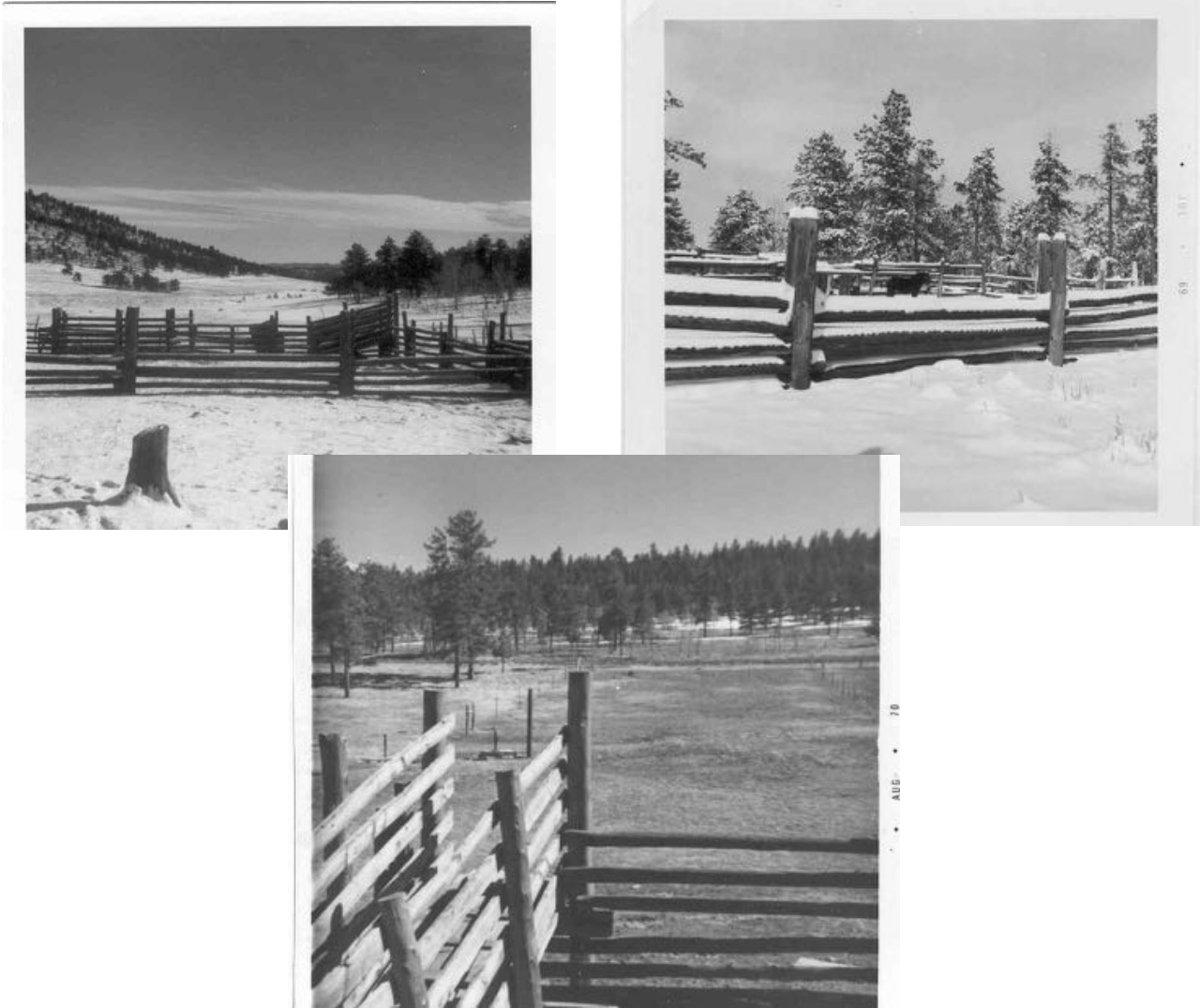


The Garage as it was in 1963. Note the window is now a door. The car is a 1951 Buick Super

The A-frame duck house and pen were built by the Rankins in the 1960s.



The corral and lower well



The north end of the house





South end of the house: two-bedroom addition,  
built by Jim Price



Barn Stuff



Replacing the east side floor

The tree beside the  
barn died and then fell  
on the barn in high  
winds

