



Above: Shawnee, Colorado

Right: Log cabin on Crow Hill
(still exists?)



Visit www.parkcountyhistory.com for more information.
You too can help save a bit of Colorado history!

Christie serves on the Board of Directors of the Park County Historical Society. She also serves as President of the Park County Local History Archives. She has authored several books and is knowledgeable of the heritage and history of the pioneers that settled in Park County and the settlements they called home.

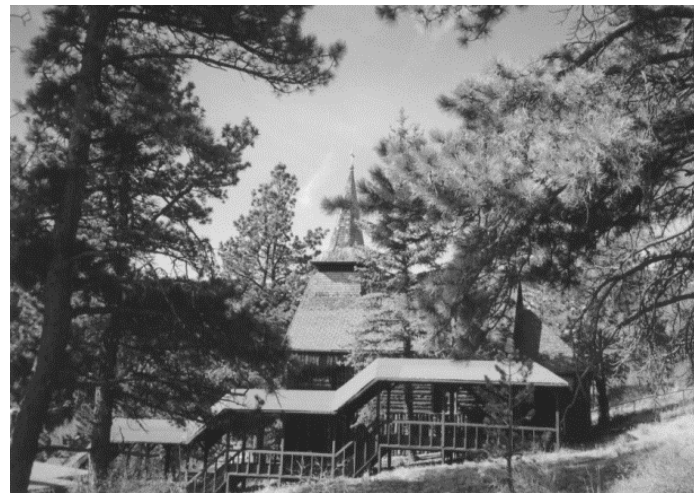
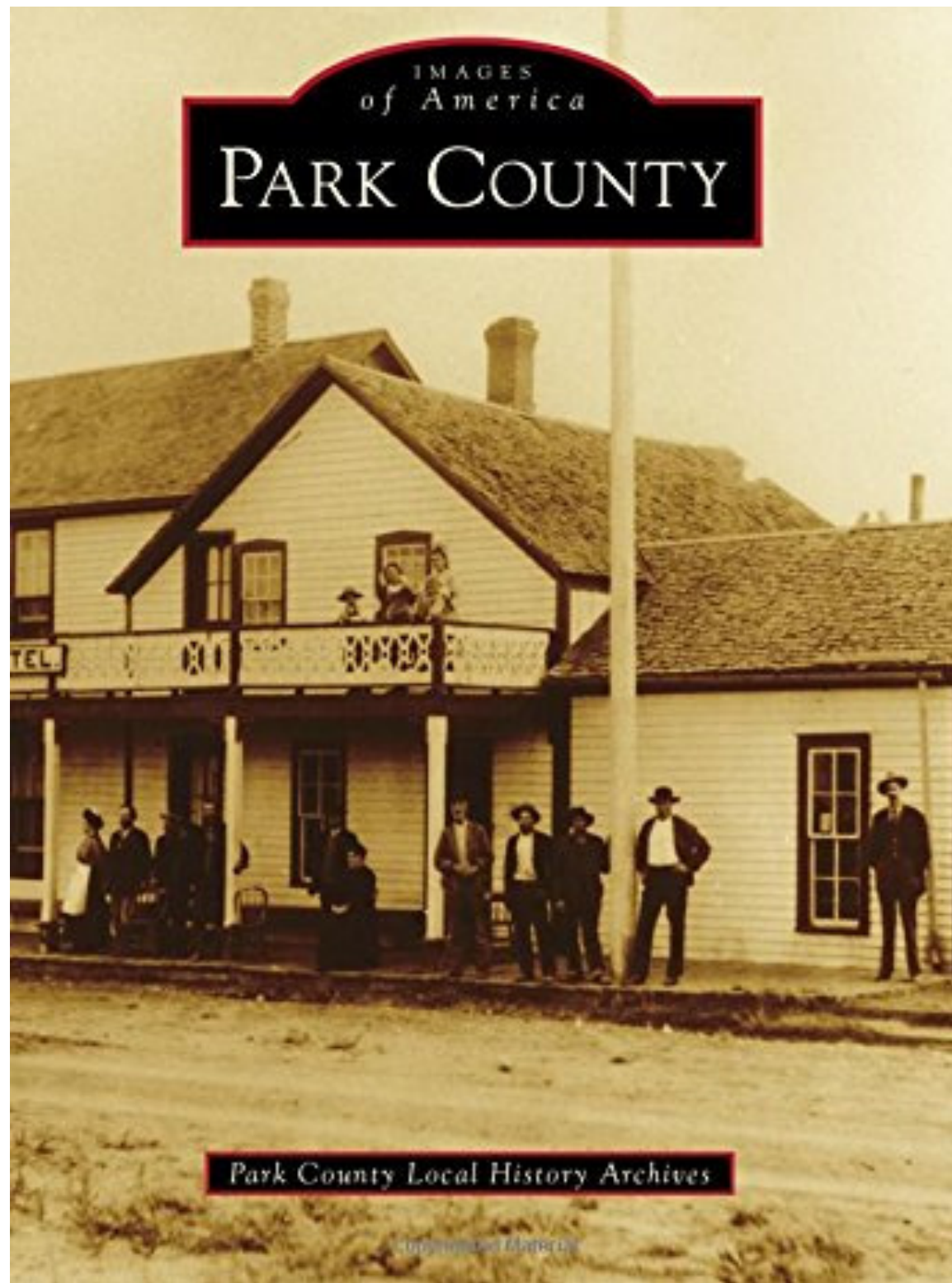
Christie will use the book "Images of America: Park County". Christie led the research by the Directors of the Park County Local History Archives. It will be available to buy at the dinner and Christie will be glad to autograph it for you on behalf of the Archives.



**Christie Wright presents
Images of America: Park County**

to the
Park County Historical Society
April 22nd, 2017

Design: Jim Glenn,



Sacred Heart Catholic Church – built 1908



Photo by Chas McNamara 2014



Weller Family



McGraw Park possibly 1980s

Created in 1861, Park County is one of Colorado's original 17 territorial counties. It is named after South Park, which is the vast, high alpine valley at the county's center. By the time the first fur trappers and explorers arrived in the early 1800s, Ute Indians had long visited the area to hunt the mountain valleys and fish the trout-filled streams. In 1859, prospectors discovered gold along Tarryall Creek, ushering in a mining boom that gave rise to dozens of boisterous mining camps. Ranchers soon followed, taking advantage of the native grasses and raising cattle to feed hungry miners, often under harsh conditions. By the 1880s, the Denver, South Park & Pacific and Colorado Midland Railroads arrived, spurring the growth of new towns and opening new markets for Park County's minerals, hay, ice, lumber and cattle. As mining waned, tourism emerged as an economic force attracting visitors eager to experience Park County's authentic character and stunning natural beauty.