



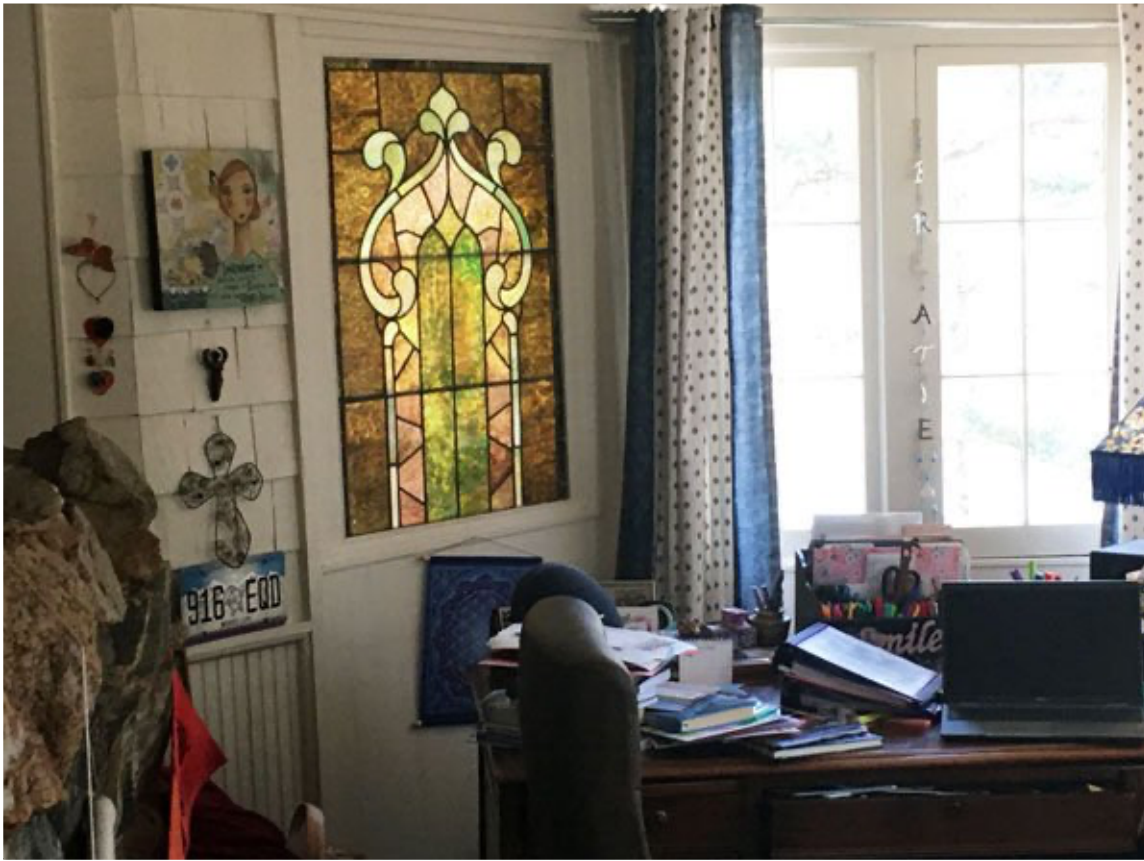
## PCHS takes a road trip to Shawnee

By Pat Mauro Contributor, Jun 23, 2022



Barn built by Azel Slaght in the 1860's  
(Photo courtesy of Pat Mauro/The Flume)

The Park County Historical Society toured the town of Shawnee on May 14. We met Shawnee Mountain Gallery owner Vince Tolpo in downtown Shawnee. Vince was our guide; with great weather, we toured the many sites/homes in Shawnee.



Original stained glass window in the home of Joe Little.

Vince explained how Shawnee has one of the oldest water systems in the state. It supplies water to all of the homes in Shawnee, and is maintained by various residents in the town. As we viewed the sites with Vince, we had other locals join and tell stories of their property, etc.

Our special guest of the day was one of our most longstanding members of PCHS and assisted with the beginnings of McGraw Park in the 1970's, Glenda Price Marshall. Glenda told stories of working with Jess Fitzsimmons, and that she may be related to Shawnee founder Harry Price. She entertained us with her wit and great stories! We viewed the Grandview Hotel also, where the founder of Qdoba grew up. We then toured the former home of Joe Little, who was from the Little family for whom Littleton, Colorado, is named.

At the east end of town, we viewed the 1860's era barn built by Azel Slaght, and current owners Susan and Wayne Lambert are working to rehabilitate. We also toured their home there, another beautiful Shawnee home. We then returned to the Time

Capsule art/gift store, which is the newest business, now occupying the Shawnee Store, and ate lunch there.

After lunch, the remaining attendees and I hiked across 285 at the location of the Shawnee Depot and the RR grade of the Denver South Park and Pacific RR. This made for another great trip of PCHS. See us at [www.parkcountyhistory.com](http://www.parkcountyhistory.com), and on our Facebook page.