



Park County Historical Society
N E W S L E T T E R



P.O. Box 43, Bailey, CO 80421

November 2008

President's Corner by Pat Mauro

Well, another summer flew by! We had two trips as it worked out this summer, and both went well. We went to Guffey on July 12. We ended up delaying the annual election that day, because we were short of a quorum. Our 1st stop was at the Bender Ranch, now called the Aspen Creek Ranch. The current caretaker, Curtis Brown gave us an exceptional tour of the ranch, including the restoration of one of the original cabins, and the main ranch house also. All of the power for the ranch is supplied by wind and solar power! We continued on to Guffey for lunch and a meeting, and then toured the rest of the town. Bill Soux showed us through most of the buildings in the town, including the original jail, store, town hall, and the infamous *Guffey* Chicken Fly arena, held on July 4th!

Our second trip this year was on September 2 7th, to the Tumbling River Ranch up Guenella Pass. PCHS member Lynn Keyes gave an extraordinary tour of her former home, which her parents Ernie and Meezie Keyes bought in 1946. (Meezie is one of the longest continual members of the PCHS). The weather and fall colors made for a truly exceptional PCHS tour! See more detail in the article and pictures included in this newsletter.

On the weekends of June 7-8th and 14-15th, the Como Depot stabilization project took place. We repaired the roof and put up posts to keep the building from continuing to lean. The work was completed by a team of volunteer workers from Colorado Mountain College, Colorado Preservation, Inc. (CPI), the DS&P Historical Society and the Rocky Mountain RR Club. Materials were acquired with the help of a \$1400 grant from Park County. This project was a pilot project coordinated by Jonas Landes from CPI, to actually pull groups together to complete historic preservation projects. The results were awesome, and the depot was open for the 1st time on Railroad day in August! Thanks to all the volunteers that participated, Park County for the monetary support, and David and Moya for serving lunch to us all on each of the 4 days! If you haven't seen the improvements to the depot, be sure to check it out next time you're near Como! (Plus the food at the Hotel has been getting rave reviews also!)

Bailey Day ended up working out good for us at McGraw Park. It was the 1st year that Bailey Day became Bailey Daze, being on both Saturday and Sunday! There were some bumps in the road to pull it off, but in the end it seemed to work out well. On Saturday, we had a great deal of excitement, when a girl ran across the Keystone Bridge, while a beautiful cinnamon bear ran across the hill side of Morrow Mountain! We ended up having some great sales on Sunday, particularly due to having Tom and Denise Klinger appear to sign their new book, 'Colorado & Southern Memories and then some-Platte Canon'. Thank you Tom and Denise! We still have the book available for sale also.

The production of the "Old Colorado Southern & Engine #9 has progressed! We received the copy of the DVD made from the original film from the granddaughter of Helen McGraw-Tatum, Susan Gilbreath. The video on the DVD was not an improvement from



Park County Historical Society **N E W S L E T T E R**



P.O. Box 43, Bailey, CO 80421

November 2008

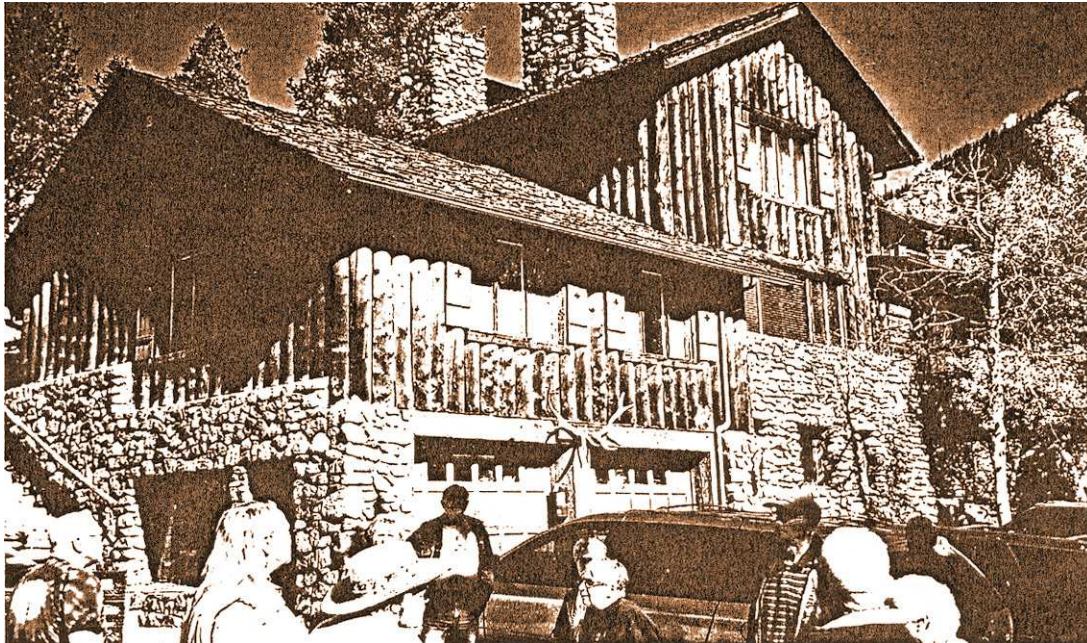
the VHS version, but the audio is. We are now deciding how to make the best product from what we have, and hope to have a finished product soon.

Grant requests have been submitted for the Glen-Isle Lodge, Como Depot and the Como Hotel. They were submitted on Oct. 1, and we are waiting to hear the results soon. We hope that funding for all these projects are successful, and we wrote letters of support for all 3 projects. Also, a grant was funded for the Salt Works Ranch main house restoration, so that project continues to progress!

The Shawnee Historical Society, chaired by Gary Goodson, has raised funds to have a new bronze sign with the history of Shawnee/Slaghts displayed in front of the Shawnee Store. See more details in the article included.

So, while I wasn't able to arrange all the trips that I had planned this spring, it was a productive summer, and the trips were quite exciting! Historical preservation in Park County is alive and well! Coming this winter, I am looking at a program in November, and am hoping to return to having a Christmas potluck like we've had in the past. Stay tuned!

PCHS Field Trip to Tumbling River Ranch



We headed up Guenella Pass, and our first stop was at the spectacular falls on the switchbacks heading up to Geneva Park/Cowboy Flats. The falls may have been the inspiration for the falls on the Coors beer can, since the Coors Family owned much of the property in the area at one time. The group continued up to the campground in Cowboy Flats, which is the location that the Fitzsimmons cattle drives ended at. (the last drive was in 1966)

Sixteen people toured the Tumbling River Ranch, with our great tour guide, Darlynn Keyes. Darlynn is the daughter of the originator of the Tumbling River Ranch, Ernest and Meezie Keyes,



Park County Historical Society **N E W S L E T T E R**



P.O. Box 43, Bailey, CO 80421

November 2008

who opened the dude ranch in 1946. Located approximately four miles from Grant up Guenella Pass, the land was homesteaded by the Sullivans. The Coors family then acquired the land, and sold it to the son of Denver mayor Quigg Newton. James Newton built the lodge at the ranch in 1937. The lodge is furnished with antiques, western art, and hunting trophies. With great views of the Geneva Creek canyon, the lodge is truly a spectacular site. Darlynn pointed out many details during the tour, such as her old bedroom, all the additions of cabins, swimming pool, recreation hall, corral, and horse barn that her family had built during their ownership of the ranch.

After touring the main part of the ranch, we ate lunch at the picnic area adjacent to Geneva Creek. We held a PCHS meeting after eating, and held the election during the meeting. We then went across the street to the mansion owned by Mrs. Porter (member of the Coors family), which was built circa 1933. The mansion is truly a one of a kind structure, built of stone on the exterior and stucco finish on the interior. A large kitchen is used for feeding guests that stay at the lodge, which is now used by guests of the ranch for boarding. A beautiful courtyard is in the middle of the U shaped building, and overlooks a pond on the south side. The building also has seven basements. The original homestead cabin of the Sullivans is also on the site. With the autumn colors starting to turn the view looking south over the pond was astounding!

After finishing the tour there, we drove towards Shawnee, and stopped at the home of Ruthie Lamping. Ruthie is the great granddaughter of Ben Tyler, and bought his homestead, to keep it in the family and restore. Ruthie has gone to extremes to restore the site. Her father was born in the home that she now lives in. Every aspect of the home has been restored and improved. Many of the original out buildings are still in place, including a milk shed, barn, and a cabin. Ruthie is now renting out rooms as a bed and breakfast.

The trip ended up being another fantastic tour of some great Park County historical sites!

2008 Election of Officers

Since no new slate of candidates was advanced, David Gardner moved that the present officers be accepted for 2009. His motion was seconded and approved along with the groans from the officers present. Please consider volunteering to serve as a director, secretary, committee member, etc. for your Park County Historical Society as new ideas and sharing of responsibilities contribute to a healthier and more-inclusive organization. Please share your talents!

Park County Postal History by Ron Hill

Before Colorado became a territory it was divided between Nebraska, Kansas, Utah and New Mexico territories. Present day Park County at that time was part of Arapahoe County, Kansas Territory, until the new Colorado Territory was formed in February 28, 1861. The idea to establish a new territory began as early as when the cities of Denver and Golden were founded. The movement for Territory was promoted by William Byers, publisher of the Rocky Mountain News and who, in 1862, joined by Territorial Governor John Evans, formed the Denver, South Park and Pacific Railroad, which served Park County.

Today in Park County there are ten post offices. Only one, Jefferson, founded January 18, 1860, dates back to pre-territorial days. When the Territory of Colorado was formed there



Park County Historical Society

N E W S L E T T E R



P.O. Box 43, Bailey, CO 80421

November 2008

were already three post offices in the areas of Kansas Territory which are now Park County. These were Tarryall, January 4, 1860; Jefferson, January 18, 1860; and Hamilton, July 26, 1860.

Over the years Park County had almost 70 post offices not all at the same time since many were established and later closed with new ones appearing later elsewhere. As mentioned before, three (3) were already here when the Territory was established in 1861 and sixteen (16) more were added during territorial years. (before Colorado statehood in 1876). The Fairplay post office, established only five months after the new Colorado Territory was formed, was opened August 2, 1861 and was the first to be established in the new Park County. Alma, Fairplay, Grant and Hartsel are the only ones remaining today that were founded during territorial years. (plus Jefferson, founded under Kansas Territory, and then later re-established when the railroad arrived).

Here at South Park City we have a number of postal artifacts on display. In the Simpkin's General Store are the Post Office boxes from the old post office in Garo. The Garo Post Office was founded on June 29, 1880 and South Park City received the PO Boxes shortly after the Garo post office was closed in 1955.

November Program

Two programs in one! Historical Shawnee Post Office presented by Ron Hill and Black Mountain History presented by Jane Gilsinger and Linda Bjorklund both are Saturday, November 15th 7 p.m. at the Shawnee Community Center.

Shawnee Historical Marker

After months of very much work and a little heated politics; the procuring of pledges that totaled \$2105.00 of funds were finally obtained for the new Shawnee Historical Marker in Park Counties first historic community of Shawnee, Colorado. The Shawnee Historical Marker unveiling ceremonies are planned before the end of 2008.

It is very significant that all funds for the Shawnee Historical Marker were entirely given by local Shawnee citizens; a few very thoughtful highway 285 corridor businesses. My sincere thanks to the following contributors:

Wayne & Susan Lambert - Shawnee, CO	J.P. Frazier - Shawnee, CO
Susan Hickel Carpenter - Shawnee, CO	Cal & Bonnie Templeton - Shawnee, CO
Jo Ann Richards -Albuquerque, NM	Gayle Kingery - Bailey, CO
Karen & Mike Davidson - Shawnee, CO	Rita Dye - Shawnee, CO
Gary & Patty Goodson - Shawnee, CO	Claytin & Konnie Stolts - Shawnee, CO
Louis Bayden Joline - Lake Tapawing, MO	Arthur Hudak - Shawnee, CO
Freda Mason - Shawnee, CO	Vince & Carolyn Tolpo - Shawnee, CO
Kay May - North Fork Ranch, Shawnee, CO	Bill Moore - Moore Lumber, Bailey, CO
Barbara J. Behl - Deer Creek. Realty, Bailey, CO	Dr. Douglas Wilson, Conifer Dental, Conifer, CO
Paige Goodson - Denver, CO	Anonymous - Shawnee, CO

Gary Goodson Sr. - Chair - Shawnee Historical Marker Funding and Writing Committee.
Committee Members: Brian Heber and Vince Tolpo, Historic Preservation Committee



Park County Historical Society
N E W S L E T T E R



P.O. Box 43, Bailey, CO 80421

November 2008

2008-2009 OFFICERS AND CONTACTS

Pat Mauro	President & Caboose Chair	303.838.7740	pkrnauro@yahoo.com
Arthur Hall	Vice President	303.816.1735	soonle@ix.netcom.com
John Rankin	Treasurer & McGraw Park Curator	303.502.0617	nurnlrankin@yahoo.com
Linda Bjorklund	Winter Secretary	719.836.9801	d1bjorklund@wildblue.net
Gary Minke	Summer Secretary	719.836.2331	kgarym@chaffee.net
Roger Christenson	Membership Chair		roger@spacecornics.com
Gary Goodson	Historic Preservation Committee Chair	303.838.1357	garygoodson@hotmail.com
Jane Gilsinger	Archivist	303.838.2159	kgilsing356@msn.com
Eve Kuenn	Director	303.838.7043	evekuenn@earthlink.net
Cheryl Pelton	Director	303.816.9257	ccheryllyon@hotmail.com