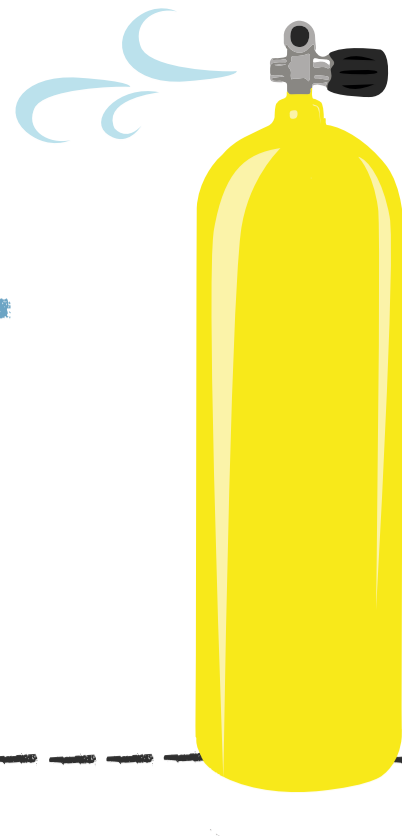


Safety is in the air

Avoiding carbon monoxide poisoning while scuba diving.



What is carbon monoxide?

Carbon monoxide (CO) is an odourless, colourless and tasteless gas, usually produced by the incomplete combustion of carbon containing compounds.

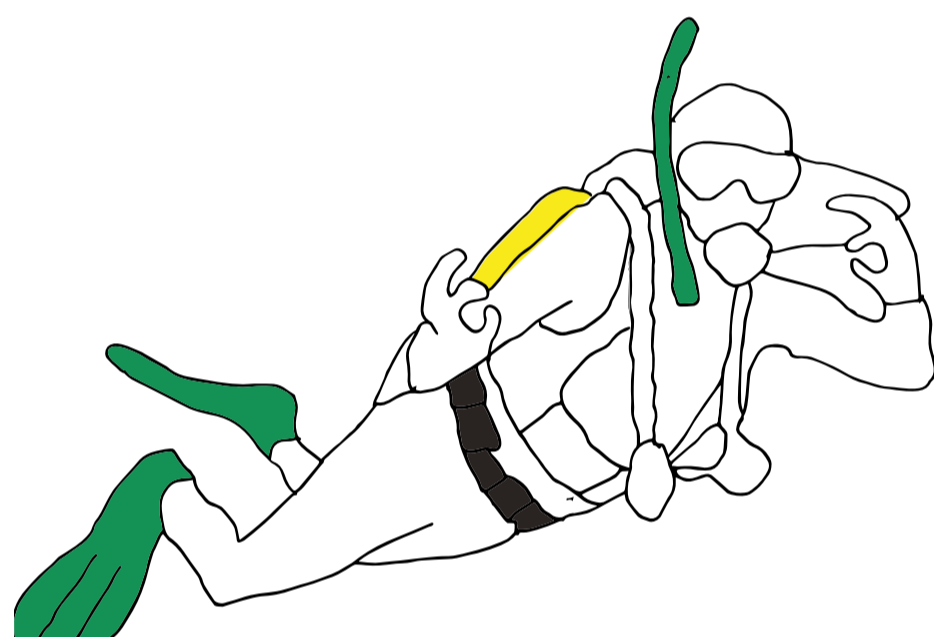
Prevention

CO contamination usually arises from impurities in the air taken into the compressor.



What can the dive centre, club or dive shop do?

- Make sure the air inlet from compressors is not located nearby any source of contamination such as motor vehicles or diesel generators. Also make sure nobody is allowed to smoke nearby the air inlet.
- Make sure the correct compressor oil and filters are used, and regularly check that the air intake hose is not damaged.
- Ensure proper maintenance of the compressor, as excessive wear can lead to overheating.
- Regular check the quality of the air. This can be done by using detector tubes.



What can the diver do?

- If using your own compressor, respect the recommendations as stated before.
- Only obtain air or breathing gas fills from a reputable dive centre, club or dive shop.
- Ask the air supplier how often they check the quality of their air.
- Check the location of the air intake of the compressor when getting a cylinder filled at an unknown filling station.
- Avoid smoking immediately prior to the dive.
- Check your air cylinder for the presence of CO using a personal CO detector device.

Signs and symptoms

| | | |
|------------------------------|--|---|
| Headache | | Confusion |
| Vertigo | | Paralysis |
| Nausea | | Unconsciousness |
| Breathlessness with exertion | | Cherry-red lips, cheeks and fingernails |
| Vomiting | | |
| | | |

Treatment



Basic life support and 100% oxygen should be administered as soon as possible.



Call DAN-SA for medical advice.

0860 242 242 (SA)
+27 11 266 4900 (int)

0861 FAX DAN (329 326)

info@dansa.org

www.dansa.org