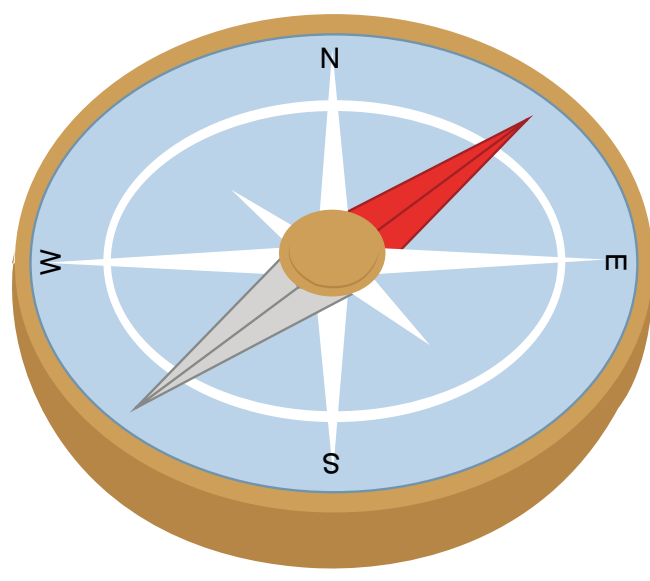
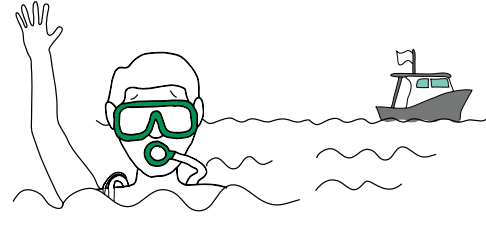


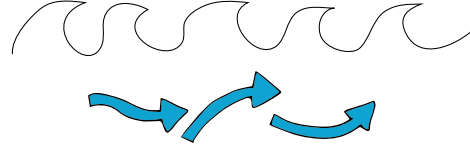
Don't get lost at sea



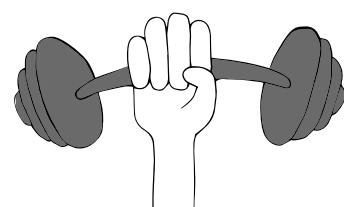
Why would divers get lost?



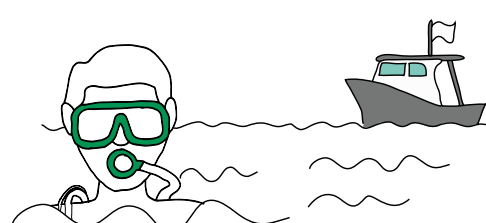
Divers get left behind by the dive crew due to lack of procedures.



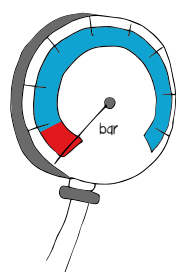
Surface currents can make it impossible to get back to shore.



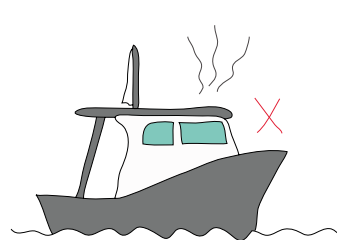
Too much weight or poor physical condition might make it impossible to swim back.



Surfacing too far from the boat / shore due to underwater currents and/or poor diving (navigation) skills.



Emergencies such as material problems or even out of air situations.



Technical difficulties might impair the skipper's ability to follow the divers.



At the surface, divers don't get noticed by the boat crew due to weather conditions.

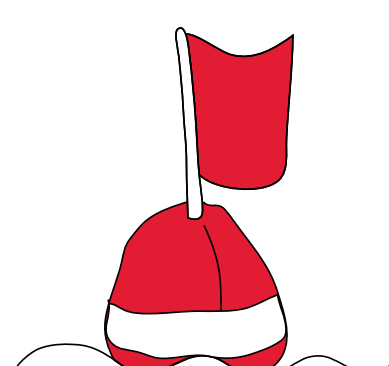
Prevention

Increase your visibility and use equipment to attract attention.

Safety equipment

Visual

- Coloured / reflective dive equipment

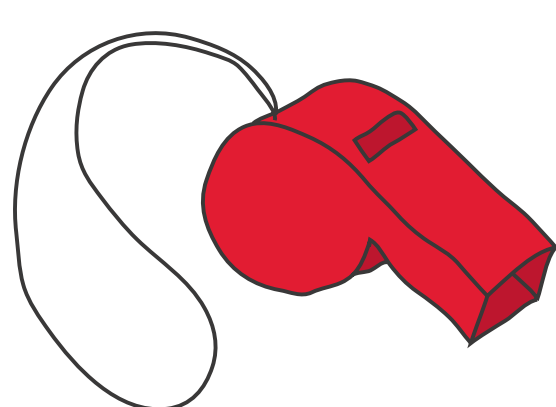


- Surface marker buoy
- Delayed surface marker buoy

- Signalling mirror
- Dive lights, strobe lights and flashers
- Rescue streamer



Audible



- Whistle
- Dive alert (air horn)

Electronic

- VHF radio - satellite phone
- ENOS
- Personal location beacon



0860 242 242 (SA)
+27 11 266 4900 (int)

0861 FAX DAN (329 326)

info@dansa.org

www.dansa.org