



Commonwealth of Kentucky

Partnership Summit: Kentucky HEALTH and Foundation for a Healthy Kentucky
May 30, 2018

AGENDA



9:30-10:15 AM	Welcome and Call to Action
10:15-10:45 AM	Kentucky's Health and Employment Needs
10:45-11:00 AM	Steps you can take as a CHAMPION
11:00AM-12:00 PM	Regional Community Engagement Incubator

Kentucky HEALTH:

THE WHY

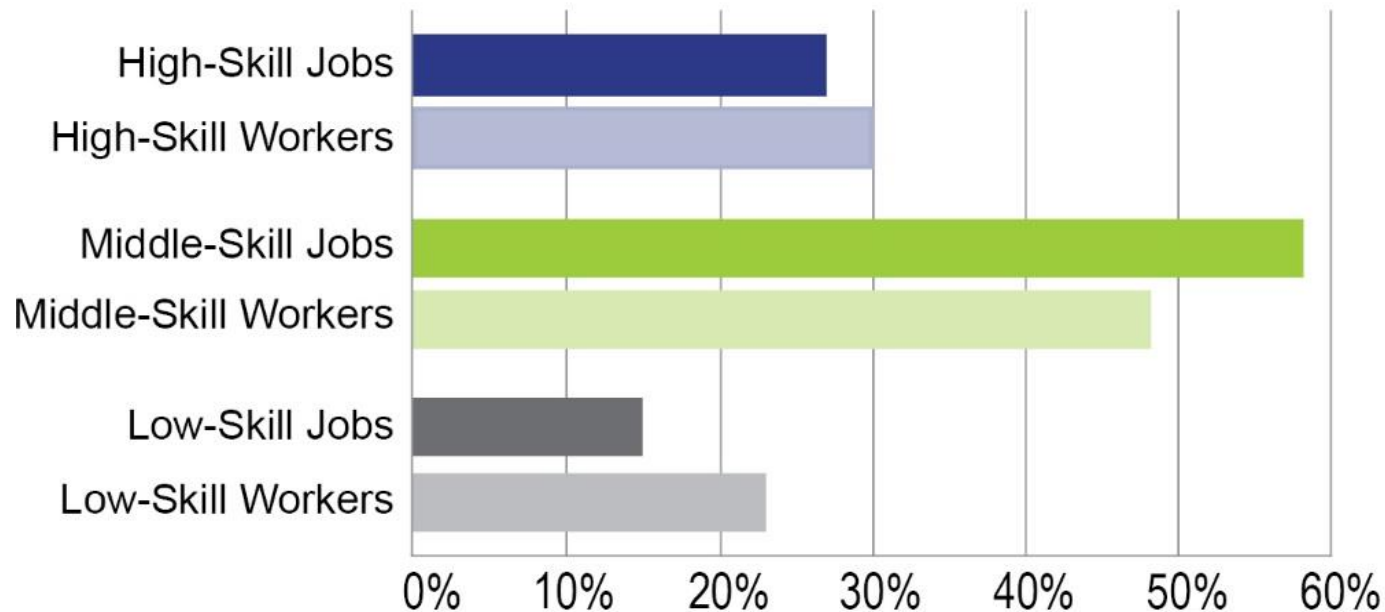
WHY: Unsustainable Growth

- **High poverty and Medicaid enrollment**
 - Workforce participation rate 59.4% (45th in the nation)
 - 19% of Kentuckians in poverty
 - 47th in the nation for median household income
 - **Nearly 1/3 of state population enrolled in Medicaid**
- **Kentucky has poor health outcomes despite high spending**
 - 1 in 3 Kentuckians have weight-related health issues
 - 2nd highest rate of smoking in the nation
 - 1st highest in the nation for cancer deaths
- **No long-term financing plan**
 - **\$1.2 billion** projected spending on expanded Medicaid over the next five years (SFY 2017-2021)

Every \$1 we spend on expanded Medicaid is \$1 we cannot spend on coverage for pregnant women, children, and individuals who need Medicaid due to age, blindness, or having a disability.

WHY: Skills-to-Jobs Gap

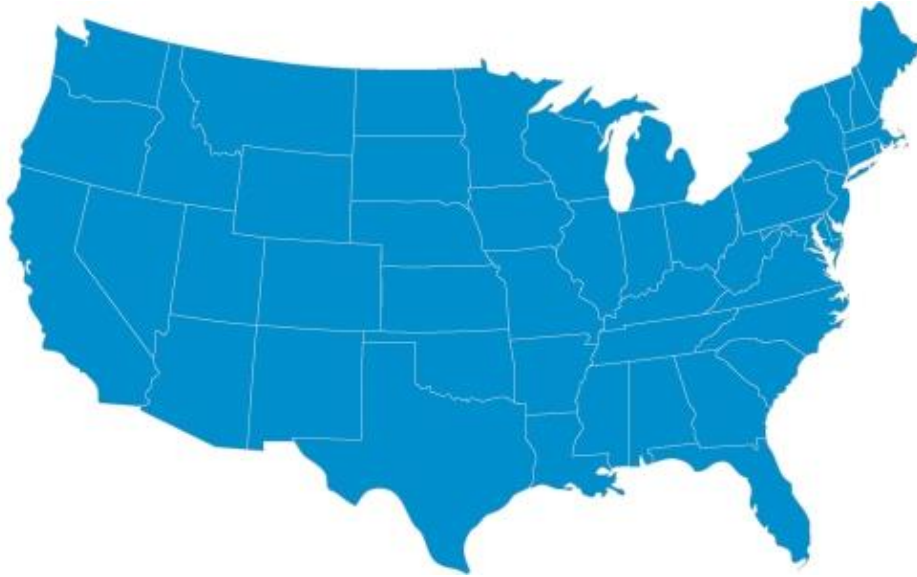
Jobs and Workers by Skill Level, Kentucky, 2015



Middle-skill jobs account for 58 percent of Kentucky's labor market, but only 48 percent of the state's workers are trained to the middle-skill level.

Source: National Skills Coalition analysis of Bureau of Labor Statistics Occupational Employment Statistics by State, May 2015 and American Community Survey data, 2015.

WHY: Workforce Participation Rate



U.S. Average
62.7%



KY Average
57.6%

Kentucky would need to add more than **165,000** people to the workforce to reach the national average participation rate of 62.7% (as of 2016).

Kentucky HEALTH

Kentucky will enroll non-disabled adult and children beneficiaries beginning July 2018.*

Kentucky HEALTH is the new health and well-being program for certain low-income adults and their families.

Helping to **E**ngage & **A**chieve **L**ong **T**erm **H**ealth



Comprehensive Approach

1 Incentivizing preventive care

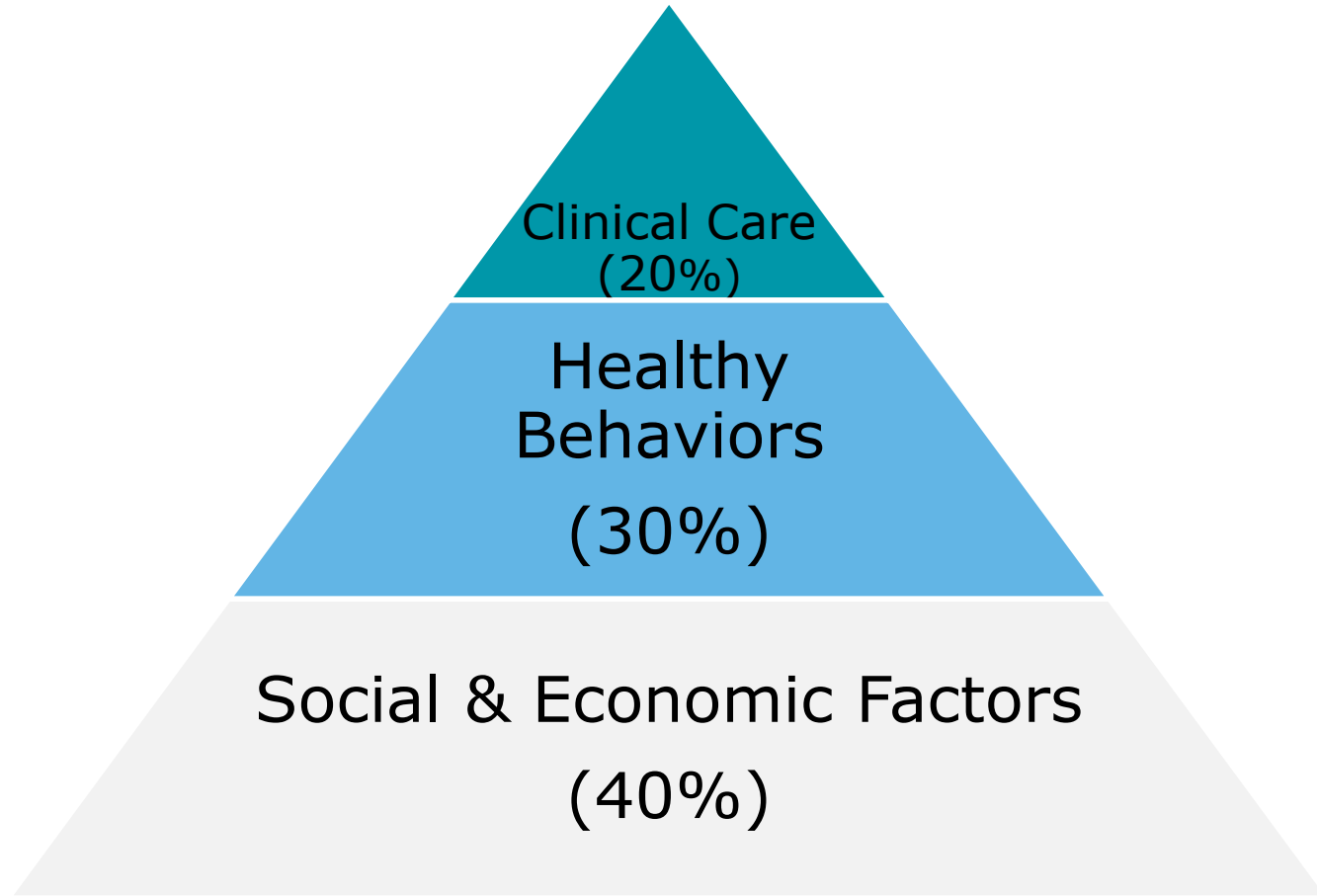
2 Commercial Insurance market model

3 Incorporates community engagement

4 Addresses growing drug abuse epidemic

*There are exemptions that exist as Kentucky HEALTH is not a one size fits all program.

Health Factors of Kentucky HEALTH



Access to healthcare alone will **NOT** improve health.
Kentucky HEALTH = a holistic solution to improve health.

Note: The remaining 10% accounts for genetic factors and zip code.

Source: Robert Wood Johnson Foundation

Medicaid 101

Types of Medicaid

Traditional Medicaid:

- individuals who are aged, blind or disabled
- within established income guidelines

Affordable Care Act of 2010:

- also known as Expanded Medicaid
- effective Jan. 1, 2014
- created new guidelines for Medicaid
- covers most Americans with household income up to 133% FPL

Who is included?

- Children under age 19
- Pregnant women
- Parents and Caretaker Relatives
- Adults Age 19 - 64
- Former Foster Care Youth ages 18 to 26
(who do not have another type of Medicaid)

Income for Medicaid Eligibility

If your household size is:	And your income is:
1	Less than \$16,394
2	Less than \$22,107
3	Less than \$27,820
4	Less than \$33,534

You may be eligible to receive Medicaid benefits.

Benefit Plan Type by Population

Kentucky HEALTH Alternative Benefit Plan

- Benefits and limitations similar to the Kentucky State Plan
- Non-medical vision/dental services covered through Kentucky HEALTH My Rewards Account

Kentucky HEALTH Medicaid State Plan/CHIP

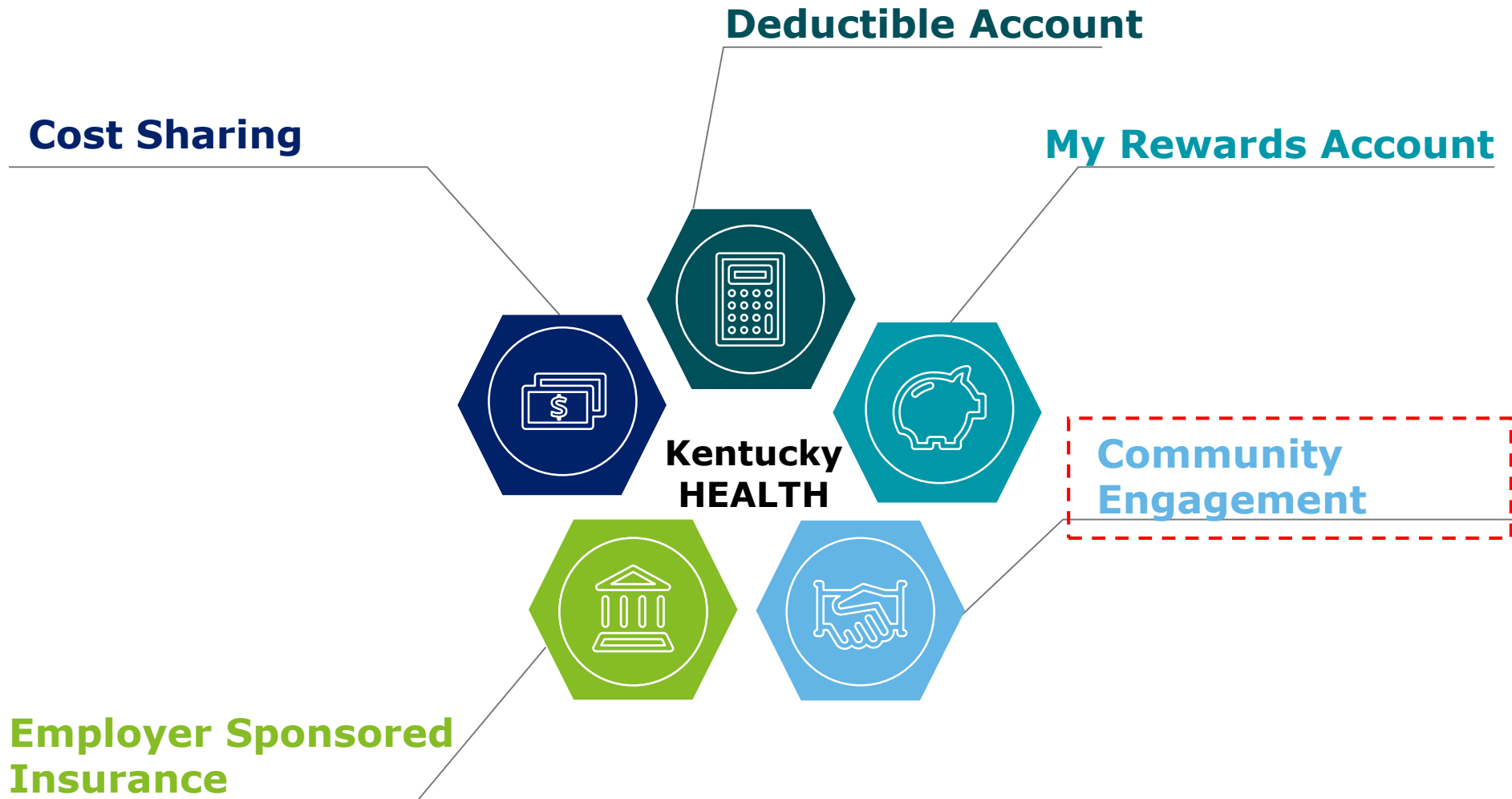
- No change in benefits
- All vision/dental services covered by **MCOs**

Population	Benefit Package
Income-Eligible Adults	● Kentucky HEALTH Alternative Benefit Plan
Medically Frail Adults	● Medicaid State Plan (No change in benefits)
Former Foster Youth up to age 26	● Medicaid State Plan (No change in benefits)
Income-Eligible Parents/Caretakers & TMA	● Medicaid State Plan (No change in benefits)
Pregnant Women	● Medicaid State Plan (No change in benefits)
Children	● Medicaid State Plan (No change in benefits)

Note: Someone may qualify as a parent/caretaker until a dependent child is age 18.

Components of Kentucky HEALTH

Kentucky HEALTH is designed with commercial insurance features

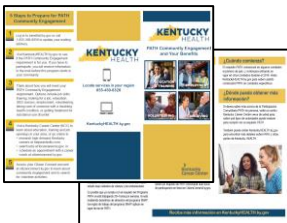


Community Engagement

Community Engagement – Individual PATH

Partnering to Advance Training and Health

- Some adults on Medicaid will need to participate in **80 hours of Community Engagement activities each month** to keep their medical benefits.
- Individuals can **choose community engagement activities based on their goals and skills.**
- Kentucky HEALTH **is working with Kentucky Career Centers and adult education agencies across the Commonwealth.**



FYI: A PATH Community Engagement pamphlet is being distributed to KCCs and DCBS. It will also be available on the Resources page of www.KentuckyHEALTH.ky.gov in both English and Spanish.

Who is Included in Community Engagement?

Included

Working age adults who:

- Do not have a disability
- Are not taking care of their child or children as a single parent
- Are not exempt for another reason

Not Included

- Children
- Pregnant Women
- Medically frail individuals
- People who are chronically homeless
- People who are taking care of their child or children
- Full-time students

Some people are already meeting the Community Engagement requirement, including:

- People who are already employed full-time (30 hours per week or more)
- Individuals who are in SNAP or TANF employment & training programs

How to Meet Community Engagement

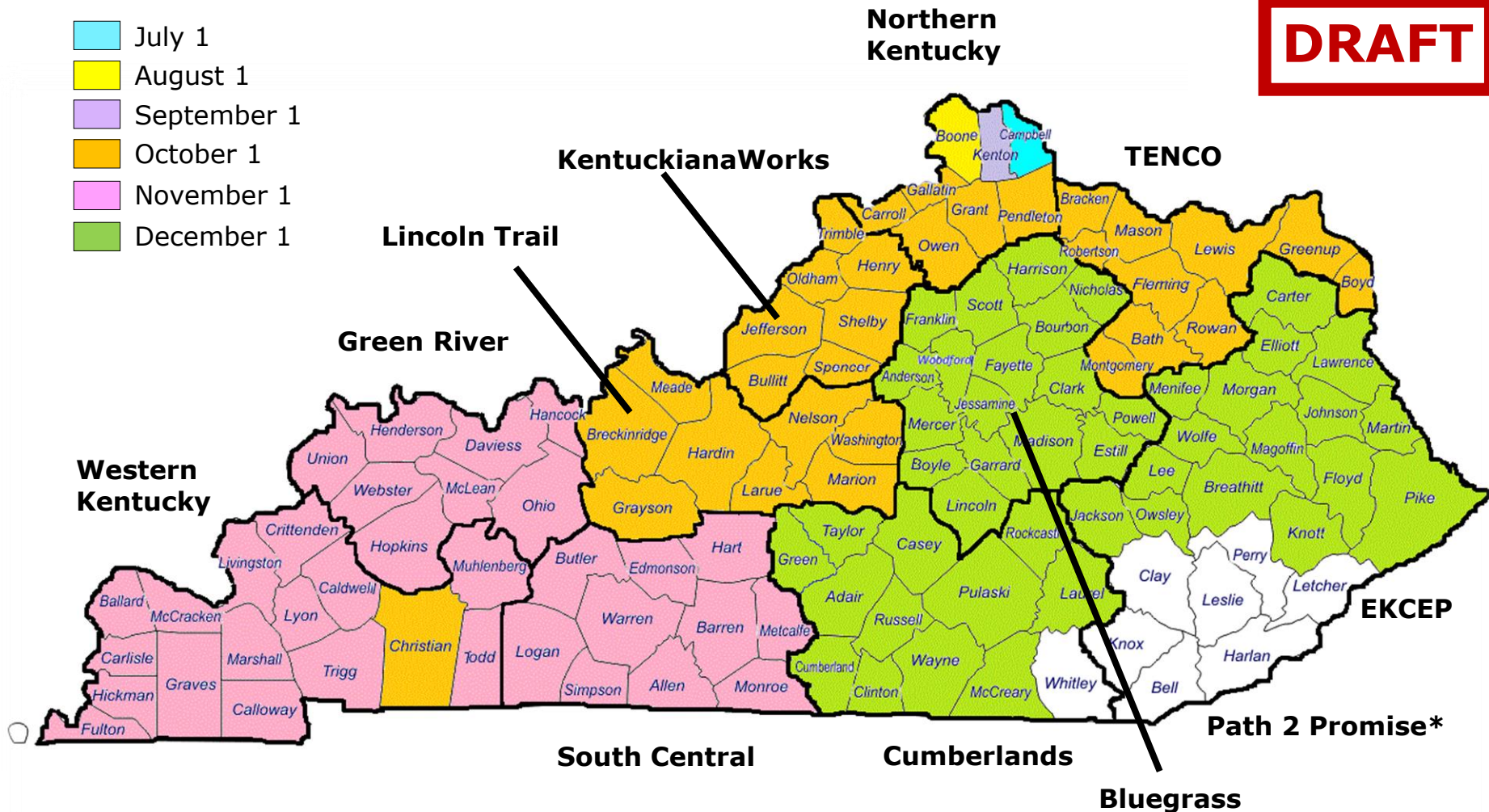
Qualifying Activities

- **Job Skills Training**
- **Kentucky Career Center (KCC) Skills/Goals Assessment**
- **Job Search Activities**
- **GED Programs**
- **Employment**
- **Apprenticeships/Internships**
- **Community Service/Volunteering**
- **Caregiving Services**
- **Participation in Substance Use Disorder Treatment**

Community Engagement Rollout by Region

DRAFT

- July 1
- August 1
- September 1
- October 1
- November 1
- December 1



*Paths 2 Promise counties are exempt from the Community Engagement requirement through December 2019.

The Ask:

**Community Stakeholders,
Employers,
and Business Leaders**

Community Engagement

What's in it for YOU

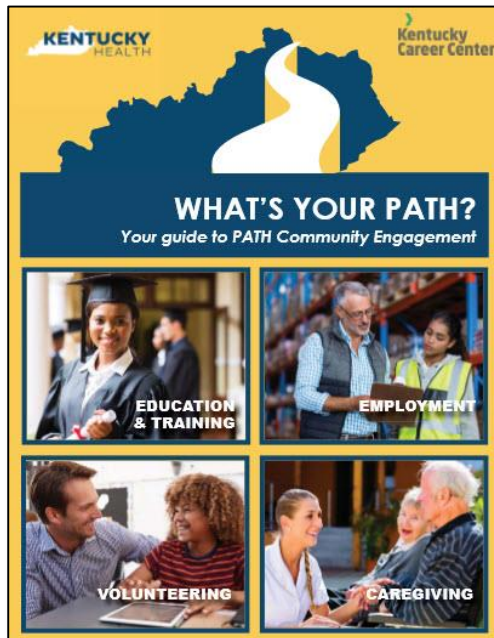
- Access to a new talent pool
- More than 150,000 Kentuckians being added to potential workforce
- Individuals who will receive:
 - skills assessment
 - connection to support resources
 - additional skills training
- Ability to enter job opportunities in FOCUS Career
- Chance to use Business Connect to enter volunteer opportunities

Outreach and Resources

Upcoming Community Engagement Materials

PATH Community Engagement Magazine

For Kentucky HEALTH recipients



PATH Community Engagement Toolkit

For Workforce, Business Partners, and Community-Based Organizations




The PATH Community Engagement Toolkit is a resource to inform and to drive conversations between community organizations, businesses, and Kentucky Career Centers. The main sections focus on:

- The Kentucky HEALTH program and PATH Community Engagement
- How businesses can access the new talent pool
- How Community Based Organizations can drive community engagement

Download and print your copies by:

- Visiting the Download page of kentuckyhealth.ky.gov OR
- Using your smartphone camera to scan the QR Code

Send us your feedback!
Please send your suggestions to KTHHealth@kentucky.gov



See handout for information about accessing these resources by visiting KentuckyHEALTH.ky.gov or using the QR code provided.

Learn more at a Stakeholder Advisory Forum

Kentucky HEALTH Stakeholder Advisory Forums are occurring monthly in different regions of the Commonwealth through the end of 2018.

What



Kentucky HEALTH Stakeholder Advisory Forums are set-up to help with the Medicaid transformation. These forums will include:

- Updates on implementation activities
- Live system demonstrations
- Overviews of draft communications
- Responses to questions about operationalizing specific policies
- Notice of upcoming communications from the Commonwealth to recipients
- Topics brought forth by forum participants

Why



Provide an avenue for constructive feedback and solutions to help ensure a successful transition for eligible Medicaid recipients

How



Moving forward, contact KYHealthTeam@KY.gov to be included on future communications regarding these meetings

Schedule of Stakeholder Advisory Forums

When



March 8th
1:00 PM EST



KY Transportation Cabinet Auditorium
200 Metro St, Frankfort, KY 40601



April 5th
1:00 PM EST



Kentucky Career Center
600 West Cedar St. Room 111, Louisville, KY 40202



May 3rd
1:00 PM EST



KY Transportation Cabinet Auditorium
200 Metro St, Frankfort, KY 40601



June 7th
1:00 PM EST



Radisson Hotel Cincinnati Riverfront
668 W 5th St. Covington, KY 41011



July 12th
1:00 PM EST



Ashland Community & Technical College
LRC Building Room L275, Ashland, KY 41101



August 2nd
1:00 PM CST



Green River ADD
300 Gradd Way, Owensboro, KY 42301



September 6th
1:00 PM EST



KY Transportation Cabinet Auditorium
200 Metro St, Frankfort, KY 40601



October 4th
1:00 PM EST



Center for Rural Dev. Ballroom
2292 US-27 #300, Somerset, KY 42501



November 1st
1:00 PM EST



KY Transportation Cabinet Auditorium
200 Metro St, Frankfort, KY 40601



December 6th
1:00 PM EST



KY Transportation Cabinet Auditorium
200 Metro St, Frankfort, KY 40601

Partnership Summits

Partnership Summits are starting with a state-wide gathering on 5/30, to be followed by local meetings by region

What

Kentucky HEALTH PATH Community Engagement Partnership Summits are intended to connect local business & community leaders in each region to network and problem solve for their specific community needs. These summits will include:

- Information on Kentucky HEALTH and Community Engagement
- Discussion on implementation and roles
- Review of specific local concerns/resources

When



Local summits are being planned for each workforce area per the current rollout map

Who



They will include Local leaders, area businesses, community based organizations, and other interested parties

Visit **KentuckyHEALTH.ky.gov**

The screenshot shows the KentuckyHEALTH website interface. At the top, a navigation bar includes links for 'IS IT FOR ME?', 'PARTS', 'HOW DO I ENROLL?', 'FAQ', 'RESOURCES', 'CONTACT', and 'STAY CONNECTED'. Below this is a hero section with four images: a landscape, a road, children, and a woman, each with a caption: 'Is Kentucky HEALTH For Me?', 'How Do I Enroll?', 'Stay Connected', and 'Get In-Person Help'. The main content area features a 'Welcome to Kentucky HEALTH' message, a 'LEARN MORE' button, and a 'Kentucky HEALTH' logo. A sidebar on the right lists 'Resources' under 'General Information', 'Member Materials', 'Resources for Specific Populations', and 'Materiales en Español (Resources in Spanish)'. The footer includes 'Cabinet for Health and Family Services', 'Contact Site Map', 'Policies Security Disclaimer Accessibility', and 'Kentucky' logo.

1 Chart that shows which populations are included

2 Summary of the program components

3 Information about enrollment in program

4 Frequently Asked Questions by topic

5 PDFs of resources for specific audiences

6 Contact information for support services

7 Links to state agency Facebook and Twitter pages

8 Overview video of the Kentucky HEALTH program

9 Resources are grouped by audience.

10 We are working with Kentucky's Spanish translation team to include **resources in Spanish**

Follow Kentucky HEALTH on Social Media

The Kentucky HEALTH Facebook and Twitter pages will be launching soon. Follow these accounts to keep up with program updates and community initiatives!



Facebook: **@KentuckyHEALTH**



Twitter: **@KentuckyHEALTH1**

Next Steps

Next Steps

- **Participate** in local Partnership Summits and Stakeholder Advisory Forums
- **Connect** with your local Kentucky Career Center Business Services Team (visit your local KCC or **KCC.ky.gov** for more information)
- **Enter** open positions on **FocusTalent.ky.gov**
- **Post** volunteer opportunities using **Business Connect** starting July 1, 2018
- **Visit** *KentuckyHEALTH.ky.gov* to:
 - **Download** and review the **Community Engagement Toolkit** (on the Resources page)
 - **Sign up** for Kentucky HEALTH news updates

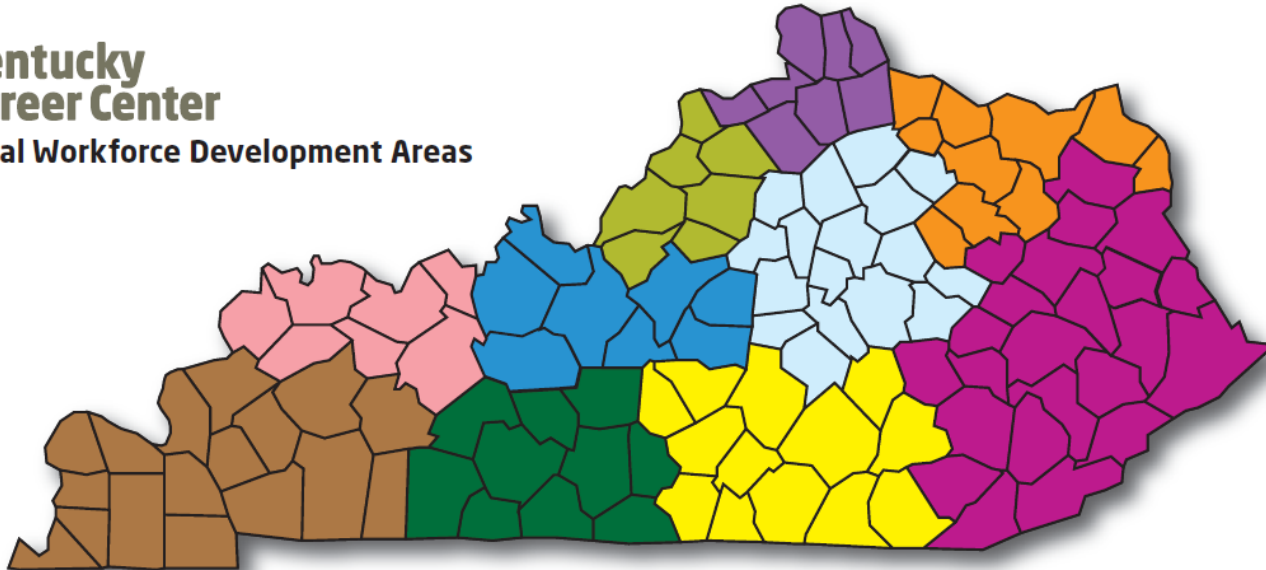
Regional Community Engagement Incubator

Preparing for Kentucky HEALTH in our region:

- What **local opportunities** does Kentucky HEALTH create in our area?
- How can our local organizations **collaborate** to support Kentucky HEALTH participants?
- What potential **local challenges** does Kentucky HEALTH present for us?
- For potential challenges listed, what **ideas** do we have for addressing locally?
- What **additional topics** related to Kentucky HEALTH do we need information on for our local Partnership Summit?

Find Your Local Workforce Area

Kentucky Career Center Local Workforce Development Areas



Bluegrass

Anderson, Bourbon, Boyle, Clark, Estill, Fayette, Franklin, Garrard, Harrison, Jessamine, Lincoln, Madison, Mercer, Nicholas, Powell, Scott, Woodford

Cumberland

Adair, Casey, Clinton, Cumberland, Green, Laurel, McCreary, Pulaski, Rockcastle, Russell, Taylor, Wayne, Whitley

EKCEP

Bell, Breathitt, Carter, Clay, Elliott, Floyd, Harlan, Jackson, Johnson, Knott, Knox, Lawrence, Lee, Leslie, Letcher, Magoffin, Martin, Menifee, Morgan, Owsley, Perry, Pike, Wolfe

Green River

Davless, Hancock, Henderson, McLean, Ohio, Union, Webster

KentuckianaWorks

Bullitt, Henry, Jefferson, Oldham, Shelby, Spencer, Trimble

Lincoln Trail

Breckinridge, Grayson, Hardin, LaRue, Marion, Meade, Nelson, Washington

Northern Kentucky

Boone, Campbell, Carroll, Gallatin, Grant, Kenton, Owen, Pendleton

South Central

Allen, Barren, Butler, Edmonson, Hart, Logan, Metcalfe, Monroe, Simpson, Warren

TENCO

Bath, Boyd, Bracken, Fleming, Greenup, Lewis, Mason, Montgomery, Robertson, Rowan

West Kentucky

Ballard, Caldwell, Calloway, Carlisle, Christian, Crittenden, Fulton, Graves, Hickman, Hopkins, Livingston, Lyon, Marshall, McCracken, Muhlenberg, Todd, Trigg