



KINGDOM BUILDERS

2022 PROJECT GUIDE

TABLE OF CONTENTS

2 Introduction

5 Global Missions

7 Missionary Support

13 Mission Trip Projects

23 Local Church Expansion

25 Outreach

27 Serve Week

33 Future Church Expansion

35 Next Gen Leaders

37 KLS

43 Conclusion



For many years Kingsway Church has been a generous, sacrificial, and Kingdom-minded local church. I'm thankful to lead a church that graciously gives and thinks well beyond its' walls by looking to have an impact around the world, into our local communities, and in raising up next generation leaders.

A few years ago, we established Kingdom Builders to be more than an annual theme to our missions convention by endeavoring to graft generosity and selfless giving into the culture of our church. Even with all that we've done through the years in missions, I am convinced that we can do more, to reach further, and to propel the Gospel forward.

It's imperative we remember that missions is not something we do, rather, it is who we are. Jesus' commission in Matthew 28:19 to go and make disciples is still our Kingdom directive. My prayer and desire is that everyone who calls Kingsway Church home would view themselves as a Kingdom Builder. When it comes to doing our part together as a church and we hear the question asked..."ready or not?," may our answer always be a resounding "yes!"

PASTOR PHIL & JENN CAPORALE

Kingdom Builders are a group of fully committed individuals and families who prayerfully commit to give, over and above their tithes, to global missions, local church expansion, and next generation leaders.

AT KINGSWAY, WE BELIEVE THAT AN ESSENTIAL HABIT OF A DISCIPLE OF JESUS IS GIVING GENEROUSLY OF OURSELVES. WE GIVE OUR TIME, OUR TALENTS AND OUR TREASURE. WHY? TO MAKE A DIFFERENCE IN THE LIVES OF OTHERS.

IT'S NO SECRET THAT OUR HEART BEATS FOR HELPING PEOPLE FIND AND FOLLOW JESUS. WHETHER IN SOUTH JERSEY OR AROUND THE WORLD, WE WANT TO SEE THE KINGDOM OF GOD EXPAND. SO KINGDOM BUILDERS, AT ITS CORE, IS A STRATEGY TO FUND THE EXPANSION OF GOD'S KINGDOM GLOBALLY, LOCALLY, AND IN THE NEXT GENERATION.



*“ALSO, I HEARD THE VOICE OF
THE LORD, SAYING:*

*“WHOM SHALL I SEND,
AND WHO WILL GO FOR US?”*

*THEN I SAID,
“HERE AM I! SEND ME.”*

ISAIAH, JEWISH PROPHET, 7TH CENTURY BC
ISAIAH 6:8



In Mark 16, Jesus commands us to go into all the world and proclaim the Gospel to ALL of creation. Kingsway Church gives a portion of its general tithe to Kingdom Builders, to ensure uninterrupted support of missionaries and missions organizations to which we've made a monthly commitment. As of November 2021, **63** missionaries and **14** mission organizations are being supported. We plan to add more! Kingdom Builders also gives us the opportunity to support key missions projects such as providing vehicles and humanitarian aid, church planting, construction, feeding programs, resources and pastoral development. Everyone in every nation deserves a chance to hear the Gospel.



Missionary Support

Goal amount:
\$150,000

Every **62** seconds one new believer is added to the church.
Every **1.3** hours one new church is planted.
Every **60** minutes one new minister is enlisted.

*“THE MEASURE OF THE HARVEST IS NOT
WHAT IS IN THE BARN BUT WHAT’S
LEFT STANDING IN THE FIELD.”*

LOREN TRIPLETT



Saved and Called

“I want to go to church!”

Tan heard about an English language center on his university campus and decided to attend a class. As a Mongolian living in Northern Asia, he had never heard the gospel or even met a Christian. Though his mother was a strong Lama Buddhist, Tan prayed to the sky and God in general.

On his first visit to the center, Tan heard a few hints about Jesus in the lesson. The next week he attended again, and after the session he happened to get on the same train as one of the cross-cultural workers who worked at the center. As they talked on the train, Tan told the worker, “I want to go to church!”

Tan and the worker studied the Bible in a coffee shop a few times. Tan was very interested. He thought resurrection is the same as reincarnation, and the worker helped him understand the difference. Tan came to understand Jesus is not a Buddha. He was invited to a small house church meeting, and given a Bible in his language to read between the weekly studies.

Within a month, Tan met Christ. He started reading the Bible every day and studying the Scriptures regularly with the worker. Just a few months later, Tan declared his faith publicly, being baptized in water on a winter day outside with a few people attending.

Tan felt Jesus was calling him to reach his people. He enrolled in training and learned how to witness in a culturally sensitive way. In time he became a leader of a small house church. Eventually he moved to another city where he could minister to his fellow Mongolians. Tan became a leader in that local house church also, and preached there regularly. As the persecution in the area became more intense, Tan moved to a new city and today continues to love Jesus and serve the local fellowship.

TROY AND LISA TABOR

Missionaries to Cambodia
95% Buddhist



SPEED THE LIGHT®

Student-led initiative providing essential transportation and creative communication equipment, like boats, cars, and even yaks, for missionary evangelism. REVO students are challenged to be Kingdom Builders, investing in spreading the Gospel around the world.

Goal amount:
\$5,000



During Mission's Convention, REVO emphasized missional giving during their youth nights, and students were taught that giving helps pave the way so other people groups can hear about Jesus. In addition, REVO students gave a combined total of **\$761** to Speed the Light in November 2021.



Convoy of Hope brings help and hope to those impoverished, hungry and hurting people of the world. Their vision is to feed children in need, organize community outreaches, train women to start businesses, help farmers increase their yield in developing nations, provide immediate disaster relief, and to partner with like-minded organizations and rural churches.

Goal amount:
\$10,000

Convoy of Hope Story

In 2021, Convoy of Hope supported the Emurutoto community in Tanzania with seed to plant on their farm. Unfortunately, there was an eruption of locusts that destroyed the crops and led to food insecurity. Convoy of Hope and Saint Church brought maize to distribute to the families and households affected by the loss of their crop, providing much needed food and hope to a community in need.

Mission Trip Projects

Goal amount:
\$40,000



In order to increase the impact of each global team, we send \$10,000 to the ministry / missionary with whom we partner. Funds may be used for construction, Vacation Bible School, food distribution, humanitarian relief, or any other need identified that will enable more people to find and follow Jesus.

2022 Mission Trips
Thailand (Virtual)
El Salvador
LA Dream Center
India





Operation Christmas Child

Annual Christmas project that sends gift-filled shoeboxes to children around the world, where teams of people stand ready to distribute the boxes along with a presentation of the Gospel. In 2018, 10.6 million shoeboxes were distributed.

***AND JESUS WENT THROUGHOUT ALL
THE CITIES AND VILLAGES,
TEACHING IN THEIR SYNAGOGUES AND
PROCLAIMING THE GOSPEL OF THE
KINGDOM AND HEALING EVERY DISEASE
AND EVERY AFFLICTION. WHEN HE SAW
THE CROWDS, HE HAD COMPASSION FOR
THEM, BECAUSE THEY WERE HARASSED
AND HELPLESS, LIKE SHEEP WITHOUT A
SHEPHERD. THEN HE SAID TO HIS
DISCIPLES, “THE HARVEST IS PLENTIFUL,
BUT THE LABORERS ARE FEW;
THEREFORE PRAY EARNESTLY TO THE
LORD OF THE HARVEST TO SEND OUT
LABORERS INTO HIS HARVEST.”***

MATTHEW 9:35-38



Templo Gilgal, Central Mexico



“The Gospel came to this community in 2011 when a man from Trinidad was witnessed to while being hospitalized. He opened his home for Bible studies, the church formed and continued to meet in his home for two years. They then acquired a property, where they held services outdoors and began construction at the end of 2018. The only “construction” that existed at that time were four columns with a metal roof, and an outhouse.

In spite of the conditions, I discovered that this congregation is not limited by the lack of a building, understanding that they, the congregation...the people, are the Church. They are eager to gather, eager to grow, and eager to reach their community(ies).

Just before my leaving Mexico in February 2020 for itineration, the church started to lay a foundation for their building. The pandemic hit their region pretty hard, but they continued to gather, as they are outdoors. Several families did not attend and are still cautious to go out in public. In March 2021, I received these pictures of the advances made, but their resources stopped and therefore construction has stopped.

We are desiring to partner with this congregation by raising \$15,000 to help complete the walls to the required height, lay the roof (which will eventually become a second story to the building) and lay the floor.”

CAROLYN MARTON
Missionary to Mexico



and the Holy Spirit said...

*“WHILE THEY WERE
WORSHIPING THE LORD AND
FASTING, THE HOLY SPIRIT
SAID, “SET APART FOR ME
BARNABAS AND SAUL FOR
THE WORK TO WHICH I HAVE
CALLED THEM.” THEN AFTER
FASTING AND PRAYING THEY
LAID THEIR HANDS ON THEM
AND SENT THEM OFF.”*

ACTS 13:2-3

It's challenging,

in a swiftly changing world, to outline every mission need months in advance. That's why, a portion of Kingdom Builder funds are categorized as “And the Holy Spirit said...” Like the disciples in Acts 13, we desire to be a people led by the Spirit of God, prepared to respond however and whenever He leads. As needs, opportunities, or special projects arise – we stand ready to partner with God, the Holy Spirit wherever He is moving.

10

Good reasons to go on a Global Mission Experience:

01. *Help meet the need.*
02. *Provide encouragement to missionaries and staff.*
03. *Allow for God to use you in unique ways.*
04. *Form incredible relationships.*
05. *Experience another culture.*
06. *It's more fun and fulfilling than a vacation.*
07. *See just how great God is all around the world.*
08. *Heart changing experiences.*
09. *See first-hand what others have talked about.*
10. *Jesus asked us to go.*



"Because of a missions trip to Guatemala in 2004, we have lived the unexpected and miraculous experience of adoption. Together, our faith has been stretched, strengthened, and deepened, as we learned to stand in surrender to God's plan for us and our family. Be willing to say yes, open your hearts, and go!!!"

BILL & ELAINE LANG (and Barbara)



*“THE LOCAL CHURCH IS THE LIGHT OF THE WORLD,”
JESUS TELLS US IN THE GOSPEL OF MATTHEW.
KINGDOM BUILDERS IS COMMITTED TO FUNDING
THE GROWTH OF THE CHURCH LOCALLY THROUGH
LOCAL OUTREACH, EXPANDING OUR OWN CAMPUSES,
PLANTING LIFE-GIVING, SPIRIT-FILLED CHURCHES
IN OUR COMMUNITIES, AND MINISTERING TO THE
HURTING IN OUR OWN BACKYARDS. WE DO NOT DO
THIS FOR COMFORT, EXTRAVAGANT BUILDINGS, OR
PRAISE, BUT TO HELP AS MANY PEOPLE AS POSSIBLE
FIND AND FOLLOW JESUS.*

Outreach



Goal amount:
\$25,000

Blessing our community in Jesus' Name is nothing new to Kingsway Church. We sponsor family-friendly events like the annual Egg Hunt and Trunk or Treat; Boro in Lights and Community Day. We also partner with and support organizations already doing good works among the community.

Outreach takes many different shapes and forms; yet, we've seen the impact of these efforts in families visiting our church and favor with cities/towns. Most importantly, the Name of Jesus is proclaimed through both word and good deeds.

Serve Week

Goal amount:
\$25,000



SERVE Week is eight days of service in our community, sharing the love of Jesus in practical ways. Our goal isn't to promote our church; there's no hidden agenda. Our goal is to serve. For those 192 hours, we focus on being the hands and feet of Jesus. Our prayer is that our combined efforts will be a powerful display of God's love for people.



AbilityTree

Kingdom Builders partners with Missionaries Joe & Jen Butler, in advancing the mission of Ability Tree, a non-profit organization that comes alongside individuals and families impacted by disability through R.E.S.T (Recreation, Education, Support & Training).

1 in 6 children in the US have a developmental disability.

Teen Challenge

A Christian-based organization, Adult and Teen Challenge assists people in gaining freedom from chemical addictions and other life-controlling problems by addressing their physical, emotional and spiritual needs.

This is Vernon Henry.

Vernon suffered from addiction from the age of 16 years old. By his mid 30s' he was homeless and living under a bridge. He hated the person he had become and many times, didn't want to live.

One month after entering Adult & Teen Challenge New Jersey, he accepted God into his heart. And now, after completion of the program, he has taken on the role of Admissions Coordinator.

"I now have a great relationship again with my children. I learned to love myself, and be a man of integrity and a man of God. I feel I went through my struggles to be able to encourage others while working as the Admissions Coordinator. I thank God for redeeming me and for the renewal of my mind."





LeaderUp

Goal amount: \$10,000

LeaderUP aims to bridge the gap between church and community, by powerfully engaging and inspiring youth to be leaders through developing relationships. LeaderUP provides a biblical approach to life skills and discipleship to instill long-term change in the lives of youth.

Founder/Executive Director - Marcus Bell



Faces of Change

Goal amount: \$10,000

Faces of Change is an addiction services ministry based in Camden. It provides assessments, referrals, processing, and support meetings for those battling addiction. Led by Wil and Lucy DuBose, they also go out into the community every Sunday night, meeting the needs of the homeless and those on the streets.



KINGDOM BUILDERS PLANS TO PARTNER WITH LEADERUP FOR THE SUMMER BLOCK PARTY OUTREACHES IN 2022.

SINCE 2018, KINGDOM BUILDERS HAS INVESTED IN THE RENOVATION OF THEIR ADDICTION CENTER, WHICH OPENED IN JULY OF 2021 AND WILL CONTINUE TO SUPPORT THE MINISTRY / OUTREACH THAT FACES OF CHANGE DOES.

Future Church Expansion

Goal amount:
\$50,000-100,000



Backyard launch



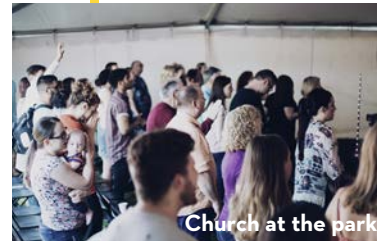
Landmark



Rowan



Marriott



Church at the park



Masso's



The Wings

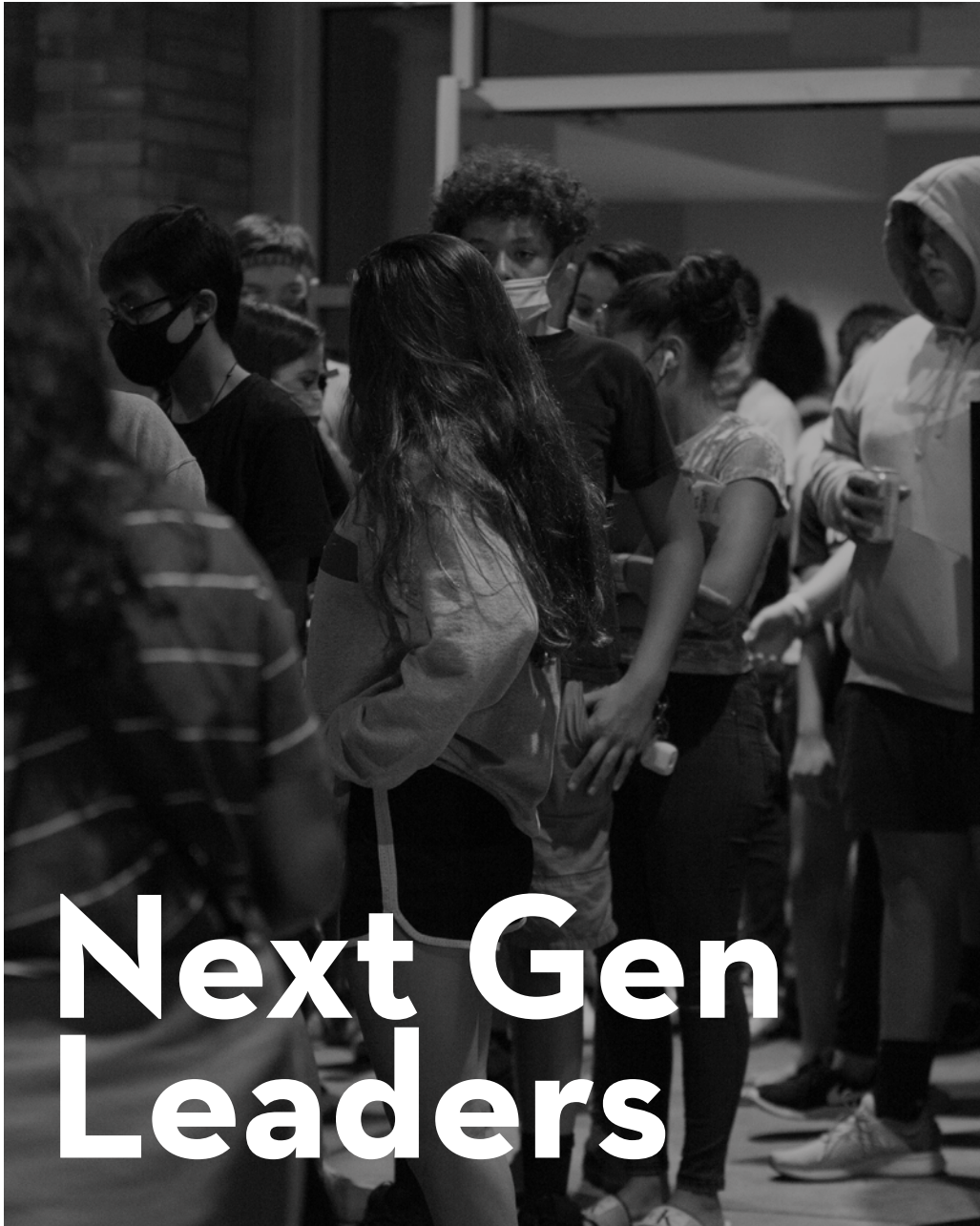


Simkins family backyard

???

WHAT'S NEXT FOR OUR CAMPUSES?

IN GLASSBORO, IT'S A PERMANENT LOCATION. AND, WHEN THE LORD OPENS A DOOR - WE WANT TO BE READY TO GET THE PROCESS STARTED SO WE CAN REACH MORE FAMILIES IN THIS GROWING COMMUNITY.



Next Gen Leaders

IN 1 TIMOTHY, PAUL WRITES TO THE YOUNG LEADER, TIMOTHY, ENCOURAGING HIM TO SET THE EXAMPLE IN SPEECH, CONDUCT, LOVE, FAITH, AND PURITY. KINGDOM BUILDERS BELIEVES IN COMING ALONGSIDE OUR NEXT GENERATION LEADERS TO FOSTER A LOVE FOR THE BIBLE, GOD AND THE LOST. OUR KINGDOM BUILDERS PARTNERSHIPS WORK WITH ORGANIZATIONS THAT CARE FOR THE PHYSICAL AND SPIRITUAL NEEDS OF OUR NEXT GENERATION LEADERS FROM BIRTH THROUGH THOSE BEGINNING THEIR CAREERS. WE WANT THE NEXT GENERATION TO SERVE, GIVE AND LOVE MORE.



KINGSWAY

Leadership School

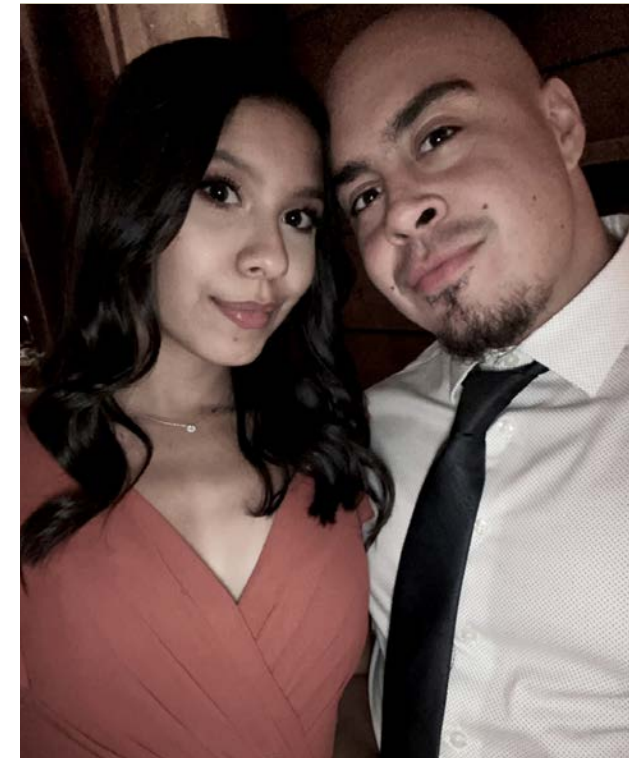
Kingsway Leadership School is designed to help identify and develop next generation leaders that will shape the future. Students engage in character development, pursue an accredited, academic degree, and receive hands-on ministry training.

KLS STUDENTS DEVELOP IN THREE AREAS:

HEART (CHARACTER)
HEAD (ACADEMICS)
HANDS (MINISTRY TRAINING)

Ernesto's Story

"Kingdom Builders has greatly impacted my life through its investment in Kingsway Leadership School. It was here where I learned strategies to learn and reflect on scripture, organizational leadership, and receive a college degree. There were moments where I was stretched but made it through because of the strong support from KLS staff and my classmates. There was truly a sense of family where I was able to develop relationships that I still have now and will last for a lifetime. I'll always remember the family dinners we would have together and the class retreats that helped us grow spiritually with Jesus and bond with one another. I don't know of another school that was so intentional in creating an environment like that. God intentionally used this program to develop my character as an individual and bring people into my life. I can't imagine what my life would be like without the friends and family I've come to know during my time in KLS. Now, I am using the skills I've learned today in order to care for the team I have had the opportunity to oversee and serve along side with. All to continue to build God's kingdom and create an environment to reach others. By the grace of God, Kingdom Builders has been a tool that has changed my life and will impact generations of today and of tomorrow."



Youth Scholarships

Goal amount: \$25,000

What better way to raise up men and women committed to the Great Commission than to plant that passion in them through a global mission experience?

We want every qualifying junior or senior in high school to go on a mission trip – fully funded.



“My experience to El Salvador was truly life changing. The love that I poured out to the people there was just as important as the love that I received from the incredible community of missionaries and native El Salvadorians. I experienced how God’s love truly transcends all language barriers, fear, and pain. I am extremely thankful I had the opportunity to serve.”

Ayana Opong



BGMC
Goal amount: \$5,000

Boys & Girls Missionary Challenge is committed to beginning the process of missions awareness, concern, and stewardship in young lives. BGMC challenges kids to reach the world by introducing them to the Great Commission at the earliest possible age.

At Kingsway, we want our kids to be Kingdom Builders too. They are disciplined to pray for missionaries and give towards BGMC every month.

Chi Alpha Ministries

Believers on university campuses who gather for growth, fellowship and to reach their respective peers for Christ. Located on over 300 campuses in the United States, Kingdom Builders supports Chi Alphas at Rutgers and Rowan Universities.

Danielle's Story

Chi Alpha has served such an important role in my life - it was the place that I found and gave my life to Jesus. I was baptized there. I met my husband there. And it was where I met some of the most influential people in my life. The work being done through Chi Alpha is so important to the kingdom of God because they are working in a place where it is really easy to get distracted by the things of the world and it is giving students an outlet and a place to find true fulfillment and purpose.





TAKE PART IN THE STORY

**THESE PROJECTS ONLY GET
FUNDED BY THE OVER-AND-ABOVE
GIVING TO KINGDOM BUILDERS. WHEN
YOU GIVE TO KINGDOM BUILDERS,
GOD'S MARVELOUS KINGDOM EXPANDS.**

**AT KINGSWAY CHURCH, WE BELIEVE THAT EVERY
CHRIST-FOLLOWER IS CALLED TO TITHE (10%) OF
THEIR FULL INCOME TO THEIR LOCAL CHURCH.
KINGDOM BUILDERS IS ABOVE AND BEYOND OUR
TITHE, AND IS GENEROUS AND SACRIFICIAL GIVING
THAT GOD LAYS ON OUR HEART TO
CHANGE THE WORLD.**

**IF YOU HAVE ANY QUESTIONS ABOUT KINGDOM BUILDERS, DON'T
HESITATE TO CONTACT US AT MISSION@KINGSWAY.CHURCH**

HOW CAN I MAKE A COMMITMENT FOR KINGDOM BUILDERS?

PLAN:

You should have a plan to give, almost like a payment.
Example - \$50 or \$100 a month. Figure out the plan
and work the plan.

VISION:

This next step involves faith. What's the vision of what
you can give if God helps you? You step into the realm
of faith – going beyond your regular income.
Write it down. Pray. Ask God to supply.

DREAM:

What would be a dream number? Hold onto the
dream. Don't tell people about it – keep it between
you and God. Watch God bring you closer to the
dream number.

