

LIGHTHOUSE LESSON



DAY 3

E + MAN + YOU + L

GOD IS EMMANUEL!

INTRODUCE IT! OLDER KIDS

Day 3 Mystery Clue (10 minutes)

Pre-prep: *Cut out the DAY 3 LARGE MEDALLION and put it and the Bible in the treasure chest, with the Bible bookmarked at the appropriate passages. For Option 1, cut out 10 hearts and hide them around the room before each rotation. Option 2 needs no supplies.*

Teacher 1: Aloha, islanders! As we get started today, let's see if we can remember our two past medallions and what they stand for. *Take answers. Remind them that God is Great and Almighty.*

Teacher 2: Now let's discover today's mystery clue!

Option 1—I Spy

*Give the kids 20–30 seconds while seated to look (not move) and keep track on their fingers of how many hearts they have found. Don't tell them how many there are. Then ask how many they found and show where they all are. Now, direct their attention to the **TREASURE MAP POSTER** and follow the trail to the next location. It will be the Jellyfish Lagoon. Pull out the **DAY 3 LARGE MEDALLION** from the treasure chest, and ask what they think a heart has to do with God as you put it on the poster. See if they can find the hidden heart at Jellyfish Lagoon.*

Teacher 1: God is not just loving—God is love. *Pull the Bible out of the treasure chest and read 1 John 4:8.* He is 100 percent love. Let's pray, and then we'll ____ (either go on a Treasure Hunt or play a game of Clues, depending on which option you choose) to hear more about this.

Option 2—Mystery Riddle

Share a clue such as the following. Adjust to fit your situation.

I'm inside your body, below your head. Sometimes I'm sad, and I'm red.

The answer to the riddle is a heart.

*Now, direct their attention to the **TREASURE MAP POSTER** and follow the trail to the next location: Jellyfish Lagoon. Pull out the **DAY 3 LARGE MEDALLION** from the treasure chest, and ask what they think a heart has to do with God as you put it on the poster. See if they can find the hidden heart at Jellyfish Lagoon.*

Teacher 1: God is not just loving—God is love. *Pull the Bible out of the treasure chest and read 1 John 4:8.* He is 100 percent love. Let's pray, and then we'll go on a treasure hunt to hear more about this!

INTRODUCE IT! PRESCHOOL KIDS

Pre-prep: Put the Bible in the treasure chest, with the Bible bookmarked at the appropriate passages. Post some hearts around the room so they are visible. Cut out the **DAY 3 LARGE MEDALLION** and place it on the **TREASURE MAP POSTER** at the Jellyfish Lagoon.

Day 3 Mystery Clue (5 minutes)

Teacher 1: Welcome back, islanders! Let's see if we can remember what each medallion stands for. *Go over each of the **TREASURE MAP POSTER** spots. See if they can remember what the number 1 stands for at Chameleon Cave, and the letter O at Octopus Inlet. You may want to also go over the **ANIMAL PAL POSTERS** as a review and look for the hidden items again in each poster.*

Teacher 2: Now we're going to play a little round of I Spy to find an important clue for today. *Have them look (without moving) to see if they can find any hearts around the room.*

Teacher 1: What do you think hearts stand for? *Take responses.* Yes, love! Do you know where love came from? *Take responses.* God! Love is from God, and God himself is love. *Read 1 John 4:7–8.*

Teacher 2: Let's check out our **TREASURE MAP** today and see what our medallion is. *Find it at Jellyfish Lagoon and comment on it being a heart. See if they can find the heart shape on the poster at Jellyfish Lagoon.* Now let's get our Bible out of the treasure chest as we go on a treasure hunt to hear more about God's love.

TEACH IT!

Gospel Presentation (10–15 minutes)

Treasure Hunt

*Pre-prep: Have the **CLUES 1-6** ready to open and read, and put the **ABFR CLUE** in the plastic bottle. Cut out the **GOSPEL JEWEL POSTERS** and hang them up so they are visible but not obvious. Hide the bottle so it is still partially visible. Bookmark the appropriate Bible passages.*

Teacher 1: We're going on a treasure hunt around the room to find jewels of various colors. We'll read you a clue, and then you hunt with your eyes until you see it. Point when you think you've found it. Ready? Here's the first clue. *Open each clue and read it as you come to it.*

Clue 1—Green

Think of the color of grass and trees. And look for a jewel in that color, please

Teacher 2: *The islanders stay seated and look for the right jewel on the wall. They point when they find it.* You were looking for a jewel the color of grass and trees. What color is that? *Pause for responses.* Yes, green! The Bible tells us right here (*point to Genesis 1*) that God made the world, and in the world, he planted a green tropical paradise called the Garden of Eden. Then he placed the first two people there to live. Do you know what their names were? *Pause for responses.* Yes, Adam and Eve.

Teacher 1: Everything was very good in the Garden of Eden. It was beautiful and nothing bad had happened. But let's listen to our next clue and find our next jewel so we can hear what happened next.

Clue 2—Dark

Jewel number 2 is the color of night Find one that's dark, not light

Teacher 2: *The islanders look and point to the jewel.* You were looking for a jewel the color of night. What color was that? *Pause for responses.* Yes, it was a dark color because it's dark at night. Our dark color reminds us that something happened in the Garden of Eden that wasn't so beautiful. You see, a serpent came along and played a bad trick on Eve. He told her to eat a piece of fruit God told her not to eat.

Teacher 1: Eve ate a bite and then so did Adam. And guess what? The beautiful world changed. They didn't obey God, and this is called sin. Sin is when we say or do something God commands us in the Bible not to.

Teacher 2: Well, this was very sad. Adam and Eve sinned first, and the children they had sinned, and their children sinned, and on and on, until our time. Guess what? Because we are part of Adam and Eve's family, we sin, too. Read Romans 3:23. And the punishment for sin is death and eternal separation from God's goodness.

Teacher 1: If you think you've never sinned against God, think about this. God says to be kind. Nod your head if you've ever gotten in a fight with a brother or sister or friend. *Pause for responses.* God says to obey your parents. Have you ever not obeyed your mom or dad when they asked you to do something? *Pause for responses.* Was there ever a time you didn't pick up your toys right away when your parents asked you to? *Pause for responses.* God says to do all things without grumbling and complaining. Have you ever complained about the food you've been given? *Pause for responses.* All these, and many more, are examples of sin.

Teacher 2: Our sin created a problem because God is perfect, so we can't be with God because he can't allow sin in his presence. So none of us could be with God forever. But God loves us and wants us to be with him someday, so he did something amazing. Let's find our next jewel and see what happened next.

Clue 3—Blue

What color does a baby boy wear? Find that jewel over there (The teacher should point near where the blue jewel is.)

Teacher 1: The islanders look and point to the jewel. You were looking for a jewel the color of baby boy clothes. What color is that? *Pause for responses.* Yes, blue.

Teacher 2: According to the Bible, God sent his Son, Jesus, from heaven to earth, as a little baby boy. That's what we celebrate at Christmas! God didn't stay in heaven and leave us here on earth and in trouble. He sent Jesus to be with us. Jesus is God and one of his names is Emmanuel. Emmanuel means "God with us."

Teacher 1: Jesus was born on earth and lived a perfect life. He was loving and kind and good, and he always obeyed his Father, God.

Teacher 2: Okay, let's hear the next clue so we can find out what happened next.

Clue 4—Red

Now it's time to look around, Until the color of a heart is found

Teacher 1: The islanders look and point to the jewel. You were looking for a jewel the color of a heart. What color is that? *Pause for responses.* Yes, red. Hearts remind us of love, and what I'm about to tell you shows how much God loves you. You see, God sent Jesus because he loves us so much and wants us to be part of his family and live with him in heaven someday. Because we're sinners, we aren't part of God's family. But Jesus did something that has given us the opportunity to be part of God's family. Does anyone know what Jesus did at the end of his life here on earth? Take responses.

Teacher 2: Yes, Jesus died on a cross. He didn't deserve to, but do you know why he did? Take responses. Because he loves us and wanted to take the punishment we deserve for the sins we do.

Teacher 1: Have you ever gotten in trouble for doing something? *Pause for responses.* Did your mom or dad punish you? *Pause for responses.* Well, Jesus died on the cross for our sins and shed his red blood to take the punishment for sin that we deserve. Isn't that so kind and loving of Jesus?

Teacher 2: Because Jesus is God, he was able to do something only God can do. He came back to life! He didn't stay dead! Isn't that amazing? Now let's hear the next clue so we can find out what happened next. It's exciting!

Clue 5—Yellow

Hope you're having lots of fun. Look for a jewel the color of the sun.

Teacher 1: The islanders look and point to the jewel. You were looking for a jewel the color of the sun. What color is that? *Pause for responses.* Yes, yellow. Yellow reminds us of heaven with its streets of gold, where there won't be anything sad or bad. It will be a beautiful and perfect place like the Garden of Eden was. And all the children of God will live there forever with God.

Teacher 2: Living with God is the ultimate treasure and the best news ever. In fact, it's the most important thing in your life. Let's listen for the next clue and find out how we can become part of God's family. This one is not a colorful jewel you will look for, but a bottle.

Clue 6—Admit, Believe, Forever Receive

To end our hunt, look for the letters ABFR Find those letters on a paper in a jar

Teacher 1: *The islanders look and point to the jar (bottle). This one will be sitting somewhere rather than on a wall.* You were looking for a jar with the letters ABFR in them, and here it is! It's a note in a bottle! Isn't that cool? Let's solve the mystery of what these letters stand for.

Teacher 2: First, the A. Stand up if you can think of a word that starts with A. Have them share words that start with A, then tell them your word—**admit**. A stands for "admit." If you admit you sin, that means you tell God you haven't always obeyed him. You feel sorry for those sins and want to repent, or turn from, doing those sins.

Teacher 1: That doesn't mean you never sin again. Only God is perfect and doesn't sin. But it means you want to please God, obey him, and not keep sinning.

Teacher 2: The next letter is B. Stand up if you can think of a word that starts with B. Have them share words that start with B, then tell them your word—**believe**. B stands for "believe." To become a child of God, you must believe God sent his Son, Jesus, to die on the cross and then rose from the dead to save you from sin.

Teacher 1: The next two letters are F and R. Stand up if you can think of a word that starts with F. Have them share words that start with F, then tell them your word—**forever**. F stands for "forever" and the R stands for "receive." Forever receive. If you are sorry for your sin and trust in Jesus for eternal life, you can become a child of God forever. You can forever receive the gift of eternal life.

Teacher 2: Being a child of God is the most awesome thing ever! You have God's love and forgiveness here on earth, and you will live **forever** with God in heaven someday. Show the DAY 4 ANIMAL PAL POSTER. Jam the immortal jellyfish is a good reminder of this. The word "immortal" means to never die—to live **forever**. God's children live **forever** with God! It's the greatest news ever.

Teacher 1: If anyone is interested in learning more about this, make sure you talk to your parents, your leaders, or me today. We'd love to tell you more about it.

REVIEW IT!

(10–15 minutes)

Lightning Round

To play: Put 90 seconds on the timer. Quickly read a question, and have everyone shout out their answers as soon as you finish reading the question. As soon as you hear someone say the right answer, affirm that answer, share the comments, and move to the next question. The group as a whole wins if they get through all the questions in the time allotted.

Questions

1. Who is today's animal pal and how does she remind us of God? *Answer: Jam the immortal jellyfish. Immortal means to live forever. We can live forever with God if we ask to be in his family.*
2. What is sin? *Answer: Disobeying God.*
3. How many people sin? *Answer: Every person—"for all have sinned and fall short of the glory of God" (Romans 3:23).*
4. Who is Jesus and why did he come to earth? *Answer: Jesus is God the Son. He came to earth to take the punishment for the sin we have committed so we have a way to be saved from that punishment and to live forever with God.*
5. Yes or no: God is love, and God loves me. *Answer: Yes, he loves you and wants you to be his child.*
6. What does it mean that we need to admit to God that we sin? *Answer: They have sinned against God. They have disobeyed his commands and need to confess (tell) their sin to God and repent (turn) from their sin.*
7. What does it mean to believe in Jesus for eternal life? *Answer: They believe that Jesus is God who came and lived a perfect life, died on the cross, and rose again. They trust in Jesus Christ for salvation from sin.*
8. What does it mean to forever receive eternal life? *Answer: To receive Jesus is to welcome him into your life as your Savior from sin and the Lord you will follow.*
9. What is something amazing you've discovered about God so far this week? *Answers will vary.*

DAY 3 CLUE SHEET

THINK OF THE COLOR OF GRASS AND TREES.
AND LOOK FOR A JEWEL IN THAT COLOR. PLEASE.

JEWEL #2 IS THE COLOR OF NIGHT.
FIND ONE THAT'S DARK, NOT LIGHT.

WHAT COLOR DOES A BABY BOY WEAR?
FIND THAT JEWEL OVER THERE.

NOW IT'S TIME TO LOOK AROUND.
UNTIL THE COLOR OF A HEART IS FOUND.

HOPE YOU'RE HAVING LOTS OF FUN.
LOOK FOR A JEWEL THE COLOR OF THE SUN.

TO END OUR HUNT, LOOK FOR **ABFR**
FIND THOSE LETTERS ON A PAPER IN A JAR.

Heart Melts

Ingredients

(makes 25 melts—serve each child 2–3)

- ☐ 1 bag Rolo® candies, unwrapped
- ☐ 1 bag mini pretzels
- ☐ Conversation hearts or any small candy hearts

Blue Wave Drink Ingredients

- ☐ Blue powdered drink mix and water, 1 quart for every 5 children

Basic Supplies

- ☐ Baking sheet
- ☐ Parchment paper
- ☐ Napkins and cups, 1 of each per child
- ☐ Stirring spoon
- ☐ Drink pitchers or coolers

Pre-prep

1. Preheat oven to 200 degrees.
2. Lay out the pretzels on a baking sheet that is lined with parchment paper.
3. Put a Rolo® candy on top of each pretzel.
4. Place in the oven for 2–3 minutes, just until the Rolo® is starting to soften.
5. Remove from the oven, and while still soft, place a candy heart in the center of the Rolo®, pressing gently.
6. Let cool before serving. This can take awhile. You may want to put them in the fridge to speed up the process.
7. Prepare the drink mix according to package directions.

Teaching Tie-In

Before we eat, let's see if we can think why there is a heart on our Heart Melts today. Take responses.



Based on what is said, remind them that hearts symbolize love, and we know God is love. In fact, God loved us so much he sent his Son to die for us. Have everyone recite today's memory verse—Romans 5:8.

Thank God for the Heart Melts and eat.

While eating, share the Conversation Starters and WOW Facts below.

Conversation Starters

- What food do you think would be fun to make into a heart shape?
- Besides your family, can you think of someone who loves you or whom you love?

WOW Facts

- God's design of our heart is amazing! If you laid all your blood vessels out in a line, guess how far they would stretch? For a child, they would stretch over 60,000 miles long. For an adult, it's closer to 100,000 miles. That would go around the world twice! And it's amazing to think that God knows about every inch of every person's blood vessels. Wow!
- An average adult's heart beats about 100,000 times each day! That would be over three billion beats over a lifetime. And God is sustaining each one of those heartbeats. Wow!

Find [these items](#) in your teacher kit. Find [these items](#) in your digital resources.

Another option is to check with the Lighthouse Lesson teachers before VBS begins to see if they plan to do small group time during Lighthouse Lessons. If not, ask them for the Day 4 Discussion Sheets and chat through those during snack time.

Tip Corner

Hershey's Kisses® also work instead of Rolos®.

Day 4 Overview

God is . . . E+MAN+YOU+L

Lesson Focus		Bible Passages	
God is EMMANUEL! He is the loving and good Savior who came to earth.		God Comes to Earth (Gospel Presentation) Select Scriptures	
Treasured Verse	Animal Pal	Cool Contest	
But God shows his love for us in that while we were still sinners, Christ died for us. Romans 5:8	Jam the Immortal Jellyfish	God of Wonder Challenge	
Deep Sea Science and Crafts	Tropical Treats	Ride the Tide Games	
Experiments: Lava Lamp and Sea Snakes Crafts: Mini Diorama and Gospel Sand Art	Heart Melts Jolly Jellyfish	Triple Play Take Heart	

Find these items in your teacher kit. Find [these items](#) in your digital resources.

Take Heart

Supplies

- ☐ Large paper heart (preferably laminated) or masking tape to make a heart
- ☐ 4 balls
- ☐ 4 cones

Pre-prep

Set up a square playing field using the four cones to mark off the corners. The field should be larger than 40 x 40 feet, if possible. In the center of the field, place a large paper heart on the ground, or make a heart shape out of masking tape stuck to the ground.

Teaching Tie-In

Do you think Jesus had a heart like we do? Yes, when Jesus was on earth, he had a physical body like we do, with a heart, fingernails that grew, and knees that could get scraped. He got hungry and tired, like us. But one thing was different. He was also God,

and so he never sinned, not even once. He was and is perfect! Jesus as a man was the perfect sacrifice for us. He could take the punishment for sin that we deserve because he was sinless. And he did it because he loves us so much! What's your response to that extravagant love going to be?

Let's think of that as we play this game, Take Heart.

Class Time Directions

1. The goal of this game is to be the first team to make it to the heart.
2. Divide players into four teams. Have each team line up behind a cone at one of the four corners of the playing field. Players link arms in a line behind their team's cone.
3. On the "Go!" signal, players move to the heart by having the person at the end of the line unlink his arm from the other player, run to the front of the line, and re-link arms with the person at the front.



4. Continue on with the next person who is at the back of the line doing the same thing, and then the next, and so forth.
5. Play continues until the first team has reached the heart at the center of the playing field. A player must be able to physically touch the heart with his hand to win.
6. Switch up play after a round or two by having players get to the heart in other ways. For example, players can crawl, hop, or dance to the front of the line, instead of running. Or they can pass a ball down the line in the following manner. Unlink arms and give each team a ball. Have the players space out six to eight feet apart, with the closest player still a good

distance from the heart. The one farthest from the heart has the ball and chest passes it to the nearest teammate, then runs to the front of the line nearest the heart. Continue in like manner until someone on the team reaches the heart. (If a ball is dropped, it is picked up and play continues from that spot.)

7. Try again, but this time, if a ball is dropped, the team must start over. They must make it the whole way down the line without dropping it.

Tip Corner

- Another option is to use a wet sponge ball and underhand toss it.

DAY THREE CRAFT

GOSPEL PRESENTATION LEI



SUPPLIES PROVIDED

- ☐ Green, black, blue, red, yellow, & white cardstock flowers
- ☐ Yarn

SUPPLIES YOU MUST PROVIDE

- ☐ Plastic straws
- ☐ Pens
- ☐ Markers
- ☐ Scissors
- ☐ Hole puncher

TEACHING TIE-IN:

Today, we are going to make a special Lei that will remind us of God's love for us. The coolest thing about this Lei is we can use it to share the Gospel with other people! God is love, and He has perfect love for us. He even showed us how much he loves us by sending his Son Jesus while we were still sinners! Can you imagine how hard that would be to give up your one and only son, knowing he would die? If you are ever feeling unloved or unlovable, remember that God loves you, and let it be a reason to be thankful to God! Now let's learn the Gospel story while we make this special Lei.

DIRECTIONS:

1. Cut a piece of yarn long enough to hang loosely around your neck – make sure you cut a little bit longer so there's room to tie the ends together.
2. Cut the drinking straws into one-inch long pieces.
3. Cut out the flower shapes.
4. Use a hole puncher to punch holes in the middle of each flower.
5. Write the letters A B F R onto the WHITE flower petals - These letters stand for: Admit, Believe, Forever Receive
6. Tie one piece of the cut-up straw onto the end of the yarn.
7. Start stringing your flowers and straw pieces onto the yarn – alternating between flowers and straws. Color order for your flowers – GREEN, BLACK, BLUE, RED, YELLOW, WHITE
8. When you are done, tie the two ends of the yarn together and put your Lei around your neck.

GREEN is for Spiritual growth in Christ – 2 Peter 3:18

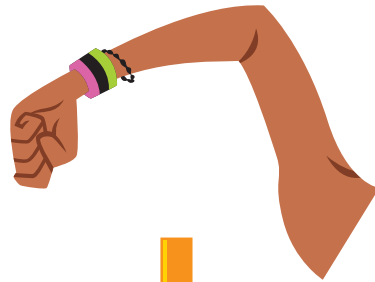
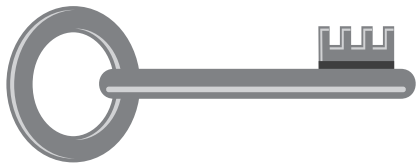
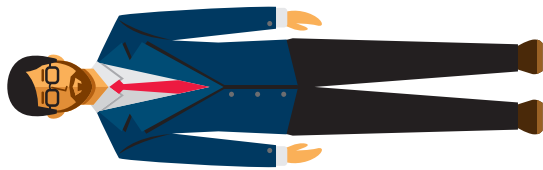
BLACK is for the sin in our lives that separates us from God – Romans 3:23

BLUE is for the waters of Baptism – Romans 6:4

RED is for the blood of Christ that flowed freely for all – Romans 5:8

YELLOW is for the promise of eternal life in heaven with Jesus – John 3:16

WHITE is for the clean heart when we turn from our sins and follow Christ – Psalm 51:7





✕ **reasured Verse**

**But God shows his
love for us in that
while we were still
sinners, Christ
died for us.**

ROMANS 5:8



***reasured Verse**

**While we were still
sinners, Christ
died for us.**

ROMANS 5:8







JAM THE IMMORTAL JELLYFISH

may seem to live forever in the ocean.
You can have true eternal life with God
by turning from your sin and trusting in
Jesus, who is “God with us.”

GOD IS EMMANUEL!

Day 4: Animal Pal Poster © 2020 Answers in Genesis—US. All rights reserved. AnswersVB.com. Printed in China.





JELLYFISH

They look more like floating hot air balloons than living things, but jellyfish will let you know quickly that they're alive.

Those colorful, bell-shaped tops have snakelike tentacles that sting! In some species, the tentacles can be up to 200 feet long!

About 95% of a jellyfish is made up of water. That's why they seem to melt away on the beach. Most of the body parts are used for eating. They don't have bones, eyes, or even a brain! But don't let that fool you. God gave these floating feeders complex designs to push through the water by jet propulsion and grab a meal with their frilly arms.

