

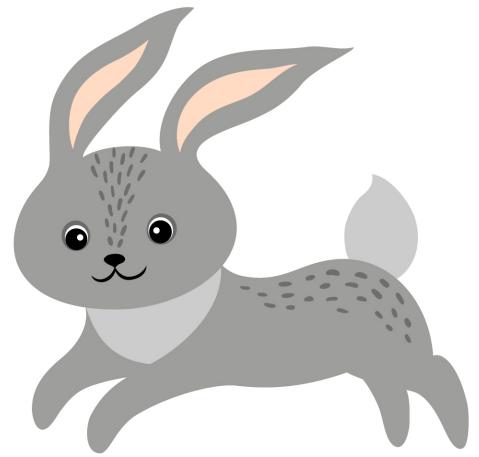




BEAVER HINTS:

- *This animal spends a lot of time in the water.*
- *Their teeth never stop growing, but they get shorter when they chew on wood.*
- *This creature is known for building dams and slapping its tail against the water.*

Wk 2 - YES - Creature Cards



RABBIT HINTS:

- *This fluffy creature like to eat grass, wildflowers, and veggies.*
- *These animals have long ears and cute, fluffy tails.*
- *They are known for hopping.*

Wk 2 - YES - Creature Cards



FOX HINTS:

- *This animal likes to eat mice, rabbits, and squirrels for lunch.*
- *This animal often has triangular ears, orange fur, and a long, bushy tail.*
- *It lives in dens in the ground or tree trunks.*

Wk 2 - YES - Creature Cards



DEER HINTS:

- *These animals are fast runners, and they eat grass and veggies.*
- *The males of this forest animal are called bucks, and the females are called does.*
- *This furry animal is known to have brown fur, white spots, and antlers.*

Wk 2 - YES - Creature Cards





MOUSE HINTS:

- *Even though this creature is very small, it can scare many people, especially if it scurries into your house.*
- *This animal crawls into really small places and runs fast.*
- *This creature inspires famous characters like Mickey and Minnie.*

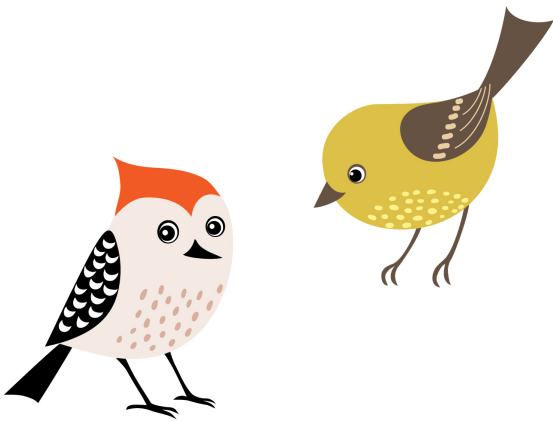
Wk 2 - YES - Creature Cards



SQUIRREL HINTS:

- *This forest creature may also live in your backyard.*
- *This animal is known for its bushy tail and big eyes.*
- *These creatures are excellent tree climbers, and they eat nuts and seeds.*

Wk 2 - YES - Creature Cards



BIRD HINTS:

- *This small creature has wings, a beak, and feathers.*
- *You might recognize this animal when you hear it chirp or sing.*
- *Babies of this creature hatch from eggs and live in nests.*

Wk 2 - YES - Creature Cards

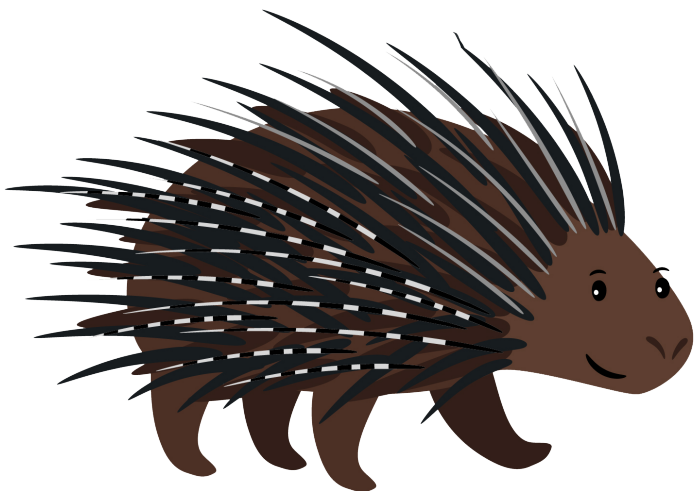


OWL HINT

- *This animal can't move its eyes so it must turn its head to see things.*
- *It likes to sleep during the day and stay awake and active at night.*
- *You might recognize this animal when you hear hooting in the forest.*

Wk 2 - YES - Creature Cards

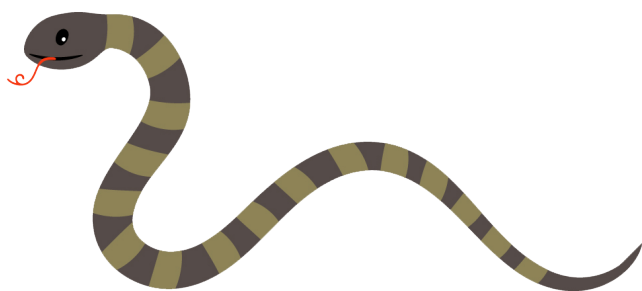




PORCUPINE HINTS:

- *This animal eats leaves, fruit, and tree bark.*
- *They rest during the day in logs, trees, or burrows underground.*
- *You know that this animal is angry when it raises its spike-like needles covering its body, called quills.*

Wk 2 - YES - Creature Cards



SNAKE HINTS:

- *There are many different kinds of this creature found all over the world.*
- *This creature doesn't have any arms or legs.*
- *To move from place to place, it has to slither on the ground.*

Wk 2 - YES - Creature Cards



BEAR HINTS:

- *This very large forest animal has sharp claws and teeth.*
- *It's known for hibernating during the wintertime.*
- *It eats fish, small animals, insects, berries, fruit, nuts, and sometimes even garbage!*

Wk 2 - YES - Creature Cards



SKUNK HINTS:

- *This forest creature is black and white and has a bushy tail.*
- *They like to eat fruit, nuts, bird eggs, and insects.*
- *When these animals feel scared, they spray a smelly scent.*

Wk 2 - YES - Creature Cards