



PINE VALLEY BAPTIST CHURCH MEMBERSHIP CLASS

Discovering Pine Valley

Dear Participant,

I am extremely grateful for the opportunity to share this class with you today. Many individuals see membership as an obstacle course of red tape that must be endured. At Pine Valley Baptist Church, we view membership as an opportunity to make disciples! As part of our calling, we placed tremendous importance on our responsibility to love, serve, and equip you to be a follower of Jesus. Membership gives us that opportunity.

When class begins, you'll have the chance to share your testimony and hear the testimony of others, including myself. You will have the opportunity to hear about our beliefs, our structure, and some of our goals. I want you to feel the freedom to ask questions and interject your thoughts at any time. We want to get to know you as you get to know us!

Participating in this class is a requirement for membership, but does not automatically make you a member. Even though I see tremendous value in membership, I don't want you to feel pressured to make a decision you were not prepared to make. I am just thankful for the opportunity to share with you the message of Jesus and how he is working in this local body of believers. I know God has a place for you. Perhaps it is here at Pine Valley Baptist Church.

Blessings,

Pastor Bryan

Table of Contents

4	OBJECTIVES
5-7	SECTION 1 THE GOSPEL
8-13	SECTION 2 BELIEFS Core Values What We Believe Process
14-19	SECTION 3 STRUCTURE Fitting In Leadership Directory Flow of Giving Campus Map
20-23	SPIRITUAL GIFTS SURVEY
24	INTERVIEW
25	WHY MEMBERSHIP

Objectives

Help better understand:

- Our vision, values and what makes us unique
- Who we are
- What we believe
- What we expect from each other
- What it means to be a member

Help identify:

- Opportunities to grow deeper
- Opportunities to connect
- Opportunities to serve
- Resources

Help decide:

- To commit to Jesus Christ
- Is Pine Valley Baptist Church right for you?

Introductions

- Name and Occupation
- Family
- How Long have you been attending?
- What attracted you to Pine Valley Baptist Church?
- Testimony (from the leader)

SECTION 1

The Gospel

I have treasured Your word in my heart so that I
may not sin against You

– **Psalm 119:11**

If Church history teaches us anything, it is that we
cannot afford to be a vacillating Church. We min-
ister to a people who are in great need of hearing
truth, we dare not make any attempt to soft pedal
that glorious truth.

– **Martin Luther**

The Gospel

The following summary is a true story. It is like many good stories you've heard or read, but the more you read, the more you'll realize this is THE STORY. It defines us all. It makes us think of who we are and who we can become. And so...

Creation

GOD

The story begins with God, who has always been. He has always existed, and He has always existed exactly as He is now. If it seems confusing, it's because He's beyond what anyone can fully comprehend.

Genesis 1:1, Psalm 90:2

CREATION

In the beginning, God spoke and everything came into existence. By His command, the entire universe was created and filled with a dramatic display of galaxies, stars, and planets—including Earth, on which was a perfect garden of paradise called Eden. Of all the beauty He created, the masterpiece was a man and a woman. God made Adam and Eve in His image to reflect Him. They were created with the grand purpose of worshiping Him by loving Him, serving Him, and enjoying relationship with Him.

HARMONY

By God's design, all of creation was in harmony and was exactly the way it was supposed to be. During this time there was no pain, suffering, sickness or death. There was complete love, acceptance, and intimacy between God and man, between Adam and Eve, and throughout creation. But something tragic happened...

The Fall

DISOBEDIENCE

Adam and Eve were far from being equal to God, yet He lovingly placed them in charge of all He had created in Eden. He gave them the freedom to make decisions and govern the earth with one rule: not to eat fruit from a specific tree. One day, God's

enemy, a fallen angel named Satan, wanted to overthrow God so he took the form of a serpent and lied to Adam and Eve. He deceived them into thinking God was not good and did not have their best interest in mind. As a result, they knowingly disobeyed God. In rebellion, Adam and Eve ate the fruit, deciding that they, not God, would determine right and wrong.

CONSEQUENCE

The consequences of their actions were devastating! Like a virus, sin entered into all of creation and into the hearts of Adam and Eve. Sin, suffering, and pain were passed down from generation to generation; all of creation was distorted from its original design. We have all read or heard the stories of war, poverty, disease, greed, and scandals that plague our world today. Those are all a result of sin.

Romans 3:10, Romans 3:19

NEED

When we think about the perfection and love that existed at the beginning of creation, we realize "we are far more flawed and far more sinful than we can dare imagine." Just think of the grudges we've held, the lies we've told, the thoughts we'd never dare say aloud. An honest glance into our own hearts reveals the truth: We are all guilty. Everyone has sinned, and the ultimate consequence, even worse than physical death, is eternal separation from a loving God, in terrible misery and unhappiness. Because of all this, we need to consider the questions: Can anything be done? Is there any hope?

The Rescue

PROMISE MADE

God removed Adam and Eve from Eden as a result of their sin but left them with a promise of rescue and hope. He promised them one of their descendants would someday rescue mankind from sin. Over the next centuries, God prepared the way for this person who would become the Savior of the world. Exact details of His birth, life, and death were recorded in the Bible many centuries before His coming. In fact, the whole Bible ultimately points to this one person as the focal point of all human history. His purpose in coming was "to seek and to save what was lost" (Luke 19:10). So who was He?

PROMISE KEPT

The promised Savior, simply, was God. God became human in the person of Jesus Christ almost 2,000 years ago, fulfilling all the predictions in the Old Testament. Jesus' birth was miraculous since His mother was a virgin. His life was unique: He perfectly enjoyed and obeyed God without sin. This ultimately led to His agonizing death on a cross as He willingly, obediently, and sufficiently died to pay for the sins of mankind, according to God's plan. In the greatest display of mercy and grace the world has ever known, Jesus' life and death became a substitute for all who would trust in Him. The perfectly innocent died to rescue the hopelessly guilty from sin and Satan.

But the grave couldn't hold Jesus. Three days later, Jesus emerged from His tomb, fulfilling His earthly mission to defeat sin by dying on the cross and to defeat death by rising from the dead—just as God promised. Forty days later He returned to Heaven where He reigns as the rightful King.

But the story doesn't end there...

1 Peter 3:18, Galatians 1:4

The Restoration

ALL THINGS NEW

For all those who trust in Jesus alone, God has also promised He will make all things new. The new heaven and new earth will be completely free of sin and selfishness—a place of perfect friendship with God, others, and all creation. No more shattering earthquakes, devastating tsunamis or violent storms will plague the earth. No more pain, broken hearts, sickness or death to trouble us.

Everything will be restored to the way it was meant to be. The new earth will once again be the perfect home God intended for His creation. God's original purpose will flourish, as those who trust in His rescue will enter into the grand purpose of worshiping Him by loving Him, serving Him, and enjoying relationship with Him forever.

Revelation 21:4

FOREVER WITH GOD

The most wonderful part of this new world is that we will be with God forever, experiencing complete joy. We will be restored to a perfect relationship with the One who created, loved, and died for us. C. S. Lewis, scholar and children's author, compared the first step into this new world as "Chapter One of the Great Story which no one on earth has read: which goes on forever: in which every chapter is better than the one before."

WHAT'S YOUR PART IN THE STORY?

God is writing an amazing story from creation to restoration. He created you to be a part of that story to worship Him, serve Him, and enjoy relationship with Him. By joining God in His story, you will find forgiveness, purpose, and satisfaction as you come to know the Author of life.

RESCUE BY FAITH ALONE

Faith is simple trust in Jesus Christ alone to save you. It means instead of believing you can rescue yourself from the consequences of sin, you transfer your trust to the rescue He purchased for you by His death. Your allegiance is now to Jesus, The King. Those who place their trust in anything other than Jesus will find themselves forever separated from the loving God who gave His one and only Son to set us free from the bondage of sin. This painful separation is called Hell.

Ephesians 2:8-9

RESPONSE

God is inviting you to be part of the story He is writing throughout the ages to come. He is offering salvation to you today, which is your invitation to the rescue God offers. You can embrace the rescue of God by simply:

- Admitting your need to god
- Asking him to forgive you
- Trusting in Jesus alone to rescue you
- Following Jesus Christ, the king of your life, in faith from this day forward

The moment you trust Jesus Christ, you become a CHILD of God and His Spirit begins to LIVE inside of you. You have become part of His story. The more you grow in your relationship with God, the more of His story you will begin to see & understand in your life. All of your sin, past and future, is forgiven, and you now find total acceptance before Him. When you begin this relationship, Jesus promises to be with you through all the UPS and DOWNS and in the joys and difficulties of this life. He loves you with an EVERLASTING, unchanging love. And not only has He promised eternal life, but He came so that you could also experience purpose, fulfillment, and freedom in this life.

John 6:47

SECTION 2

Beliefs

You, however, must teach what is appropriate to sound doctrine.

– **Titus 2:1**

All Scripture is inspired by God and is profitable for teaching, for rebuking, for correcting, for training in righteousness

– **2 Timothy 3:16**

we dare not make any attempt to soft pedal that glorious truth.

– **Martin Luther**

Core Values

“When the Bible speaks, God speaks.” -AUGUSTINE

Pine Valley Baptist Church is a local congregation of baptized believers attempting to fulfill the great commission (Mt. 28:18-20) and the great commandment (Mt. 22:36-40) beginning in the Wilmington area and stretching around the world.

The Great Commandment

³⁶ “Teacher, which command in the law is the greatest?” ³⁷ He said to him, “Love the Lord your God with all your heart, with all your soul, and with all your mind. ³⁸ This is the greatest and most important command. ³⁹ The second is like it: Love your neighbor as yourself. ⁴⁰ All the Law and the Prophets depend on these two commands.” - Matthew 22

The Great Commission

¹⁸ Then Jesus came near and said to them, “All authority has been given to Me in heaven and on earth. ¹⁹ Go, therefore, and make disciples of all nations, baptizing them in the name of the Father and of the Son and of the Holy Spirit, ²⁰ teaching them to observe everything I have commanded you. And remember, I am with you always, to the end of the age.” - Matthew 28

This purpose is summed up in the statement, “Doing Great Things”.

In order to carry out our purpose we operate under the conviction of the following core beliefs:

- The Bible is God's perfect revelation of His truth and self. It is perfect, authoritative, and sufficient.
- God exists in the persons of Father, Son, and Holy Spirit.
- Every human being is created in the image of God and deserving of dignity, respect, and love. However, all humanity has been separated from God because of sin and stands in need of rescue.
- Jesus Christ, the second person of the Trinity, has accomplished everything necessary to redeem us from sin, bestow upon us His own righteousness, and welcome us into the family of God through His life, death, and resurrection.

- Salvation is gifted to all who believe and trust in the work of Jesus for salvation. It is not earned.
- The Church is composed of people who have trusted Christ as savior and thereby have been born into God's family. The Church has been granted the responsibility and privilege of carrying the good news of salvation to the ends of the earth. Every member has a gift and responsibility to make this happen.
- Jesus will one day return to gather His Church to be with Him forever. Because of this we know time is limited and our work urgent.

1. Truth over Trends

- A. Meaning: God's Word is our standard for what we believe and how we make decisions.
- B. Scriptural Support: Psalm 19:7-11; 2 Timothy 3:16-17; 1 Peter 1:25
- C. Applying the Value Personally: How is God's Word shaping me?

2. People over Programs

- A. Meaning: People are more important than programs. We want to see people move from Skeptical Unbeliever to Disciple-Making Servant Leader
- B. Scriptural Support: Colossians 1:28-29; 2 Peter 3:18
- C. Applying the Value Personally: Who am I discipling? Who is discipling me?

3. Pursuit over Passivity

- A. Meaning: Lost people matter to God so they have to matter to us.
- B. Scriptural Support: Matthew 4:19; Luke 19:10
- C. Applying the Value Personally: Who's your One?

4. Serving over Sitting

- A. Meaning: You were saved to serve. God has gifted every Christ follower and expects them to use those gifts for the benefit of the church.
- B. Scriptural Support: Mark 10:45; Romans 12:3-8; Ephesians 4:11-16; 1 Peter 4:10-11
- C. Applying the Value Personally: Where am I serving in the church?

5. Giving over Getting

- A. Meaning: Our salvation is about a costly gift offered to us.
Because of that, we are motivated to live generous lives.
- B. Scriptural Support: Matthew 6:19-21; Mark 10:45; Acts 20:35
- C. Applying the Value Personally: In what ways am I contributing to the church with my time, talents and treasure?

6. We over Me

- A. Meaning: In our decisions, we value the body over the individual preferences.
- B. Scriptural Support: 1 Corinthians 12:12; Ephesians 2:19; Ephesians 4:4-6; Philippians 2:3-4
- C. Applying the Value Personally: Am I driven by my personal preferences or a desire to serve?

7. Great over Good

- A. Meaning: Good is the enemy of great. Our desires is to excel in all that we do.
- B. Scriptural Support: 1 Corinthians 10:31; Colossians 3:23-24
- C. Applying the Value Personally: How am I pursuing excellence in ministry?

What We Believe

Our doctrine can be fairly summed up in a statement called, “The Baptist Faith and Message”. This document has been drafted and approved by messengers at the Southern Baptist Convention on multiple occasions. While not binding for all Southern Baptist Churches, this is a fair representation of the beliefs of PVBC.

The Scriptures

The Holy Bible was written by men divinely inspired and is God’s revelation of Himself to man. It is a perfect treasure of divine instruction. It has God for its author, salvation for its end, and truth, without any mixture of error, for its matter. Therefore, all Scripture is totally true and trustworthy. It reveals the principles by which God judges us, and therefore is, and will remain to the end of the world the true center of Christian union, and the supreme standard by which all human conduct, creeds, and religious opinions should be tried. All Scripture is a testimony to Christ, who is Himself the focus of divine revelation.

God

There is one and only one living and true God. ...The eternal triune God reveals Himself to us as Father, Son and Holy Spirit, with distinct personal attributes, but without division of nature, essence, or being.

God the Father

God as Father reigns with providential care over His universe, His creatures, and the flow of the stream of human history according to the purposes of His grace. ...God is Father in truth to those who become children of God through faith in Jesus Christ.

God the Son

Christ is the eternal Son of God. In His incarnation as Jesus Christ, He was conceived of the Holy Spirit and born of the virgin Mary. ...He honored the divine law by His personal obedience, and in His substitutionary death on the cross, He made provision for the redemption of men from sin.

God the Holy Spirit

The Holy Spirit is the Spirit of God, fully divine. ...He exalts Christ. He convicts men of sin, of righteousness and of judgment. ...He enlightens and empowers the believer and the church in worship, evangelism, and service.

Man

Man is the special creation of God, in His own image. He created them male and female as the crowning work of His creation. ...By his free choice man sinned against God and brought sin into the human race. ... The sacredness of human personality is evident in that God created man in His own image, and in that Christ died for man; therefore every person of every race possesses dignity and is worthy of respect and Christian love.

Salvation

Salvation involves the redemption of the whole man, and is offered freely to all who accept Jesus Christ as Lord and Savior, who by His own blood obtained eternal redemption for the believer. In its broadest sense salvation includes regeneration, justification, sanctification, and glorification.

God’s Purpose of Grace

Election is the gracious purpose of God, according to which He regenerates, justifies, sanctifies, and glorifies sinners. ... All true believers endure to the end. Those whom God has accepted in Christ, and sanctified by His Spirit will never fall away from the state of grace, but shall persevere to the end.

The Church

A New Testament church of the Lord Jesus Christ is an autonomous local congregation of baptized believers, associated by covenant in the faith and fellowship of the gospel, observing the two ordinances of Christ, governed by His laws, exercising the gifts, rights, and privileges invested in them by His Word, and seeking to extend the gospel to the ends of the earth. Each congregation operates under the Lordship of Christ through democratic processes. In such a congregation each member is responsible and accountable to Christ as Lord. Its scriptural officers are pastors and deacons. While both men and women are gifted for service in the church, the office of pastor is limited to men as qualified by Scripture.

Baptism & the Lord’s Supper

Christian baptism is the immersion of a believer in water. ...It is an act of obedience symbolizing the believer’s faith in a crucified, buried, and risen Savior, the believer’s death to sin, the burial of the old life, and the resurrection to walk in newness of life in Christ Jesus. The Lord’s Supper is a symbolic act of obedience whereby members ... memorialize the death of the Redeemer and anticipate His second coming.

Evangelism & Missions

It is the duty and privilege of every follower of Christ and every church of the Lord Jesus Christ to endeavor to make disciples of all nations... to seek constantly to win the lost to Christ by verbal witness undergirded by a Christian lifestyle, and by other methods in harmony with the gospel of Christ.

The Lord's Day

The first day of the week is the Lord's Day. ...It commemorates the resurrection of Christ from the dead and should be employed in exercises of worship and spiritual devotion.

Last Things

God, in His own time and in His own way, will bring the world to its appropriate end. ...Jesus Christ will return personally and visibly...the dead will be raised; and Christ will judge all men in righteousness. The unrighteous will be consigned to Hell. ...The righteous... will receive their reward and will dwell forever in Heaven with the Lord. Education The cause of education in the Kingdom of Christ is co-ordinate with the causes of missions and general benevolence ... there should be a proper balance between academic freedom and academic responsibility. ...The freedom of a teacher in a Christian school, college, or seminary is limited by the preeminence of Jesus Christ, by the authoritative nature of the Scriptures, and by the distinct purpose for which the school exists.

Stewardship

God is the source of all blessings, temporal and spiritual; all that we have and are we owe to Him. Christians have a spiritual debtorship to the whole world, a holy trusteeship in the gospel, and a binding stewardship in their possessions. They are therefore under obligation to serve Him with their time, talents, and material possessions.

Cooperation

Christ's people should ... organize such associations and conventions as may best secure cooperation for the great objects of the Kingdom of God. Such organizations have no authority over one another or over the churches. ...Cooperation is desirable between the various Christian denominations.

The Christian & the Social Order

All Christians are under obligation to seek to make the will of Christ supreme in our own lives and in human society... in the spirit of Christ, Christians should oppose racism, every form of greed, selfishness, and vice, and all forms of sexual immorality, including adultery, homosexuality, and pornography. We should work to provide for the orphaned, the needy, the abused, the aged, the helpless, and the sick. We should speak on behalf of the unborn and contend for the sanctity of all human life from conception to natural death...

Religious Liberty

Church and state should be separate. The state owes to every church protection and full freedom in the pursuit of its spiritual ends. ...A free church in a free state is the Christian ideal.

Family

God has ordained the family as the foundational institution of human society. It is composed of persons related to one another by marriage, blood or adoption.

Marriage is the uniting of one man and one woman in covenant commitment for a lifetime. ... The husband and wife are of equal worth before God, since both are created in God's image. A husband is to love his wife as Christ loved the church. He has the God-given responsibility to provide for, to protect, and to lead his family. A wife is to submit herself graciously to the servant leadership of her husband even as the church willingly submits to the headship of Christ. She, being in the image of God as is her husband and thus equal to him, has the God-given responsibility to respect her husband and to serve as his helper in managing the household and nurturing the next generation... Children, from the moment of conception, are a blessing and heritage from the Lord. Parents are to demonstrate to their children God's pattern for marriage.

Process

If you haven't accepted Christ as Savior and been born again, or you aren't sure, we urge you to do so. It's the most important and fulfilling decision you'll ever make. We encourage you to talk with one of our pastors. We would love to talk with you more.

If you are born again and have never been baptized by immersion, we encourage you to follow our Saviors' example and testify to his death, resurrection, and the blessing of your new life in Jesus.

If God is calling you to be an active member of Pine Valley Baptist, the process is as follows:

1. Born again
2. Baptized by immersion
3. Transfer of membership from a church of like faith
4. Attend and complete discovering Pine Valley
5. Connecting interview
 - Feedback on the class
 - Share testimony of relationship with Jesus
 - Discuss prior church experience
 - If you desire to join, affirm that you meet requirements to join
 - Discuss involvement with connect group/Sunday school
 - Discuss spiritual gifts thing and plugging into service opportunities
6. Go forward on Sunday morning to request membership at the end of the service

If you meet these requirements, we welcome you to become an active member of Pine Valley Baptist Church! When the pastor gives the invitation at the end of the Sunday morning service please go forward and express your desire to join.

If God is not calling you to become an active member of Pine Valley family, we urge you to find another Christ honoring, Bible believing church where you can become an active part.

Membership involves a process of growth.

Stages of spiritual growth and maturity

DEAD, LOST, SKEPTICAL UNBELIEVER / OPEN UNBELIEVER

People in this stage have not yet accepted Christ as Lord and Savior. They may completely reject God, they may be seeking God, they may be "spiritual", they may even claim to know God or be a Christian, when in reality, they are their own God.

INFANT NEW BELIEVER

People in this stage have accepted Christ but haven't moved much past this point. They can be new believers or they might be stagnant, long time Christians. Life is generally all about them and their needs.

CHILD IMMATURE DISCIPLE

People in this stage are growing in their relationship with God and are also beginning to grow in their relationship with other Christians. They are applying God's word in their life and allowing others to walk beside them in their journey following Christ. However, it's still mostly about them, their needs, comfort, etc.

YOUNG ADULT GROWING DISCIPLE

People in this stage are making a big shift from being self-centered to more others centered. They are beginning to understand their role as a giver, rather than a taker – ministering to others, putting others first - being doers of the word.

PARENT MULTIPLYING DISCIPLE

People in this stage have a solid understanding of God's word and a deep, abiding relationship with the father. They are living out God's word in their daily life. There are others centered and God dependent. They are able to reproduce mature disciples of Jesus by inviting others to follow them as they follow Christ.

GRANDPARENT DISCIPLE-MAKING SERVANT LEADER

People in this stage are parents who have reproduced mature disciples that have reproduced mature disciples. They are disciples with generational multiplication, spiritual grandchildren, great – grandchildren... The goal is at least four generations for every child.

SECTION 3

Structure

But be doers of the word and not hearers only,
deceiving yourselves.

– **James 1:22**

For as the body is one and has many parts, and
all the parts of that body, though many, are one
body—so also is Christ.

– **1 Corinthians 12:12**

PVBC is an autonomous congregation with a congregational form of church government. As such, we have freely entered into partnering relationships with the listed entities for the sake of kingdom growth. These entities hold no governing power or authority over the churches they serve.



Fitting In

General Expectations:

Holiness.

Church members are expected to live their lives in a way that may be characterized as being in agreement with the biblical definition of “holy”. We are expected to carry a testimony that lifts up Christ and live a lifestyle compatible with biblical teaching. No one will do this perfectly and a spirit of grace is always necessary. However, when a member willfully chooses to live in a pattern of open sin the church will become involved to aid in correcting this problem. This process is called “church discipline”.

**But be doers of the word and not hearers only, deceiving yourselves.
- James 1:22, HCSB**

Support.

Members are expected to support PVBC through attendance, financial gifts, prayer, and general harmony with each other. Concerning our financial responsibility please be aware of our online giving option. You can access our online giving by visiting our homepage at pinevalleybc.org or by texting the word “Give” to (910)202-4688.

Involvement.

Beyond general support we believe God expects each one of His children to serve. Each member will be asked to participate in some area of ministry as giftedness and schedule allows. This includes enrollment and involvement in a small group bible study (Sunday School). Please consider enlisting today in a particular area of service or talk to a ministry leader for some guidance if you are unsure of where you would best fit. They are present and available today. Included with this material is a spiritual gifts inventory that may be of help in determining how God has wired you to serve.

Leadership Directory

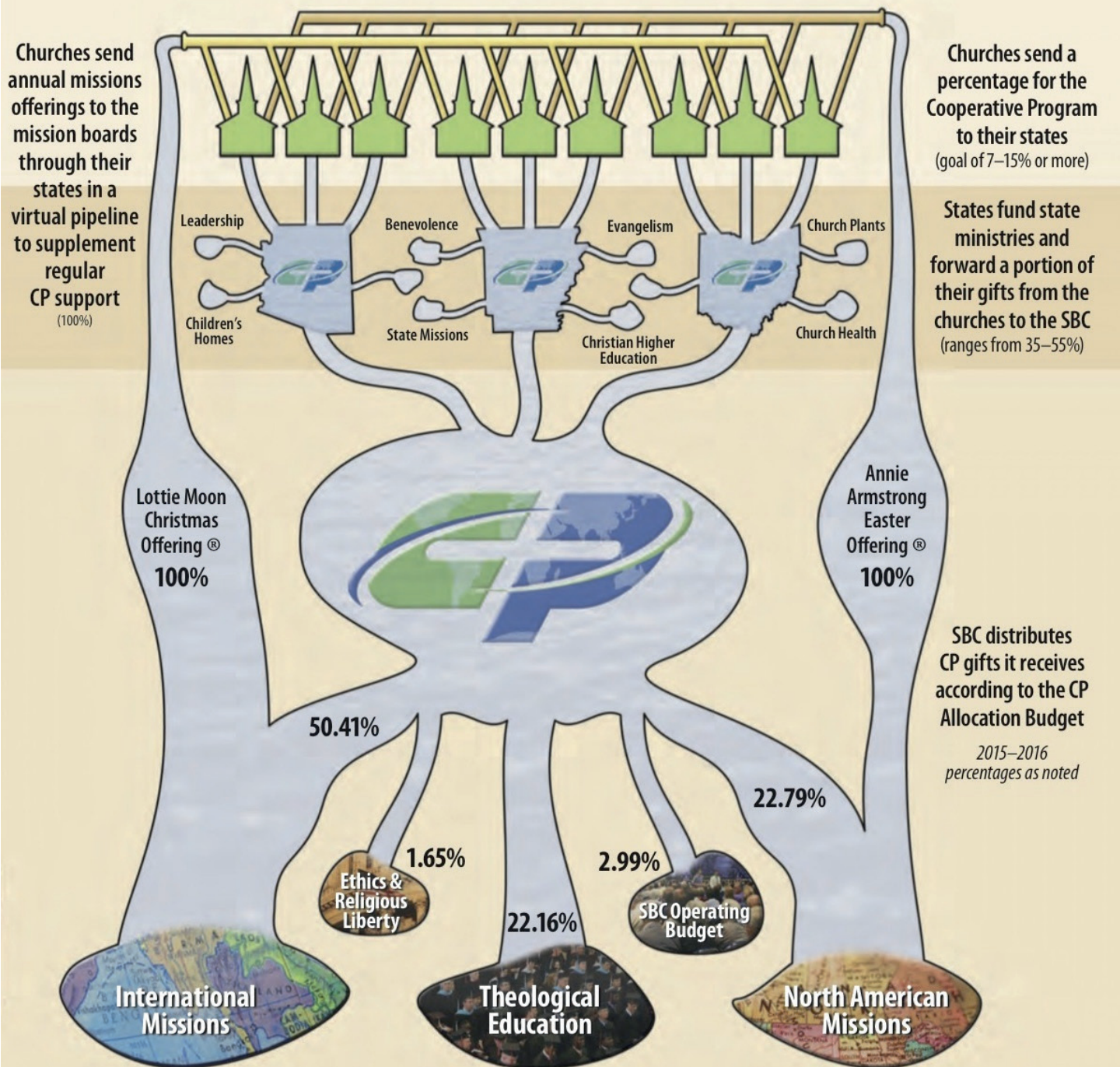
Staff

NAME	EMAIL	TITLE
Rev. Bryan Blackwell	bryan@pinevalleybc.org	Senior Pastor
Rev. Scott York	scott@pinevalleybc.org	Worship Pastor
Rev. Brad Lavoie	brad@pinevalleybc.org	Associate Pastor of Students
Anna Worley	anna.worley@pinevalleybc.org	Kids Director
Ann Turkal	ann@pinevalleybc.org	Weekday Preschool Director
Carla Arnett	carla@pinevalleybc.org	Financial Director
Lynwood Nixon	lynwoodnixon@gmail.com	Maintenance Director
Laura York	laura@pinevalleybc.org	Administrative Assistant

Deacons

NAME	EMAIL	PHONE NUMBER
Ken Tripp	ktripp@carolina.rr.com	704-201-4260
Bo Herbert	eric.b.herbert@gmail.com	843-270-9105
Duane Lahti	dclahti@outlook.com	847-946-2890
Eric Gray	saltyshores1991@gmail.com	910-262-8283
Kap Pu	kappu9355@gmail.com	910-524-0882
Lynwood Nixon	lynwoodnixon@gmail.com	910-617-7362
Rick Holliday	papoupirate52@gmail.com	910-612-2642
Rolando Serrano	the4serranos@aol.com	910-617-1239
Wayland Reynolds	waybar412@yahoo.com	919-594-2372

The Cooperative Program: Like a Mighty River



campus/information

- Rest rooms
- Stairwells
- Welcome Centers
- Elevator

worship/prayer

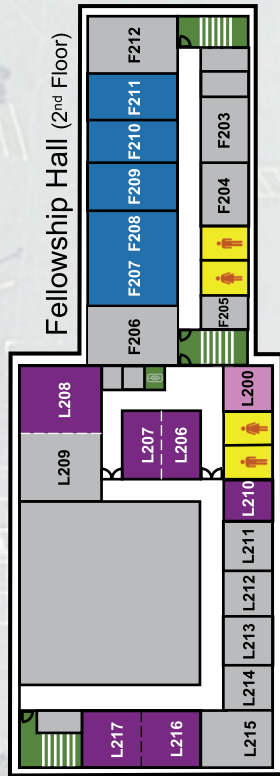
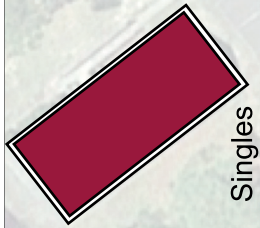
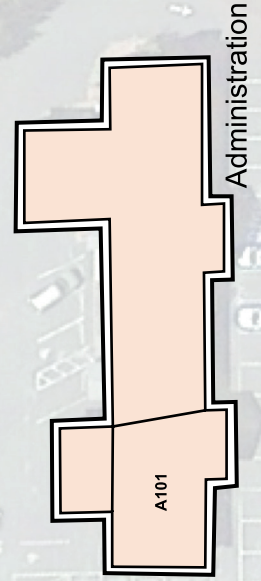
- Worship Center
- Prayer room

children/students

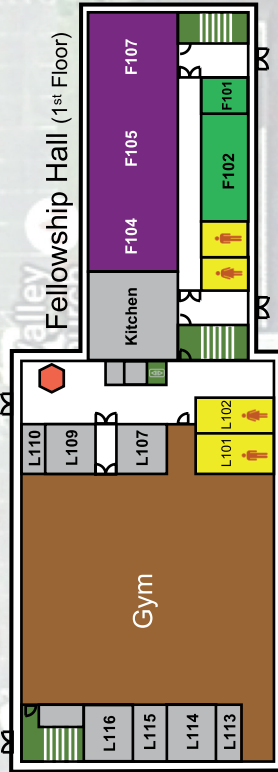
- Nursery/Pre-school P101-P108
- Grade school F206-F211
- Youth
- Mothers room P105, L200

classrooms/resource

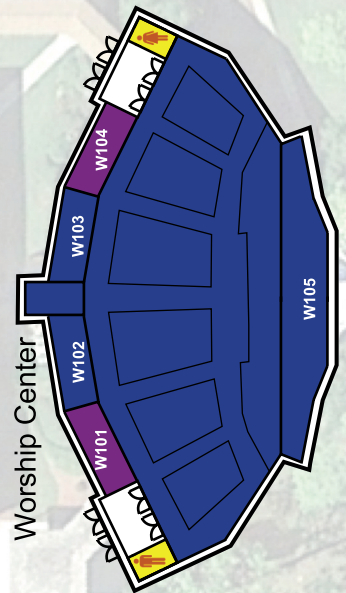
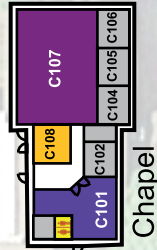
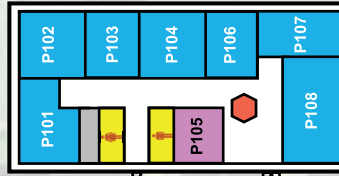
- Adult Class rooms on flip side of brochure
- Library F102
- Gym
- Parlor C101
- Singles
- Administration A101
- GROW
- Choir room W105



Christian Life Center (1st Floor ↓) (2nd Floor ↑)



Pre-school



Spiritual Gifts Survey

DIRECTIONS

This is not a test, so there are no wrong answers. The Spiritual Gifts Survey consists of 80 statements. Some items reflect concrete actions; other items are descriptive traits; and still others are statements of belief.

- Select the one response you feel best characterizes yourself and place that number in the blank provided. Record your answer in the blank beside each item.
- Do not spend too much time on any one item. Remember, it is not a test. Usually your immediate response is best.
- Please give an answer for each item. Do not skip any items.
- Do not ask others how they are answering or how they think you should answer.
- Work at your own pace.

Your response choices are:

- 5** - Highly characteristic of me/definitely true for me
- 4** - Most of the time this would describe me/be true for me
- 3** - Frequently characteristic of me/true for me—about 50 percent of the time
- 2** - Occasionally characteristic of me/true for me—about 25 percent of the time
- 1** - Not at all characteristic of me/definitely untrue for me

-
- _____ 1. I have the ability to organize ideas, resources, time, and people effectively.
 - _____ 2. I am willing to study and prepare for the task of teaching.
 - _____ 3. I am able to relate the truths of God to specific situations.
 - _____ 4. I have a God-given ability to help others grow in their faith.
 - _____ 5. I possess a special ability to communicate the truth of salvation.
 - _____ 6. I have the ability to make critical decisions when necessary.
 - _____ 7. I am sensitive to the hurts of people.
 - _____ 8. I experience joy in meeting needs through sharing possessions.
 - _____ 9. I enjoy studying.
 - _____ 10. I have delivered God's message of warning and judgment.
 - _____ 11. I am able to sense the true motivation of persons and movements.
 - _____ 12. I have a special ability to trust God in difficult situations.
 - _____ 13. I have a strong desire to contribute to the establishment of new churches.
 - _____ 14. I take action to meet physical and practical needs rather than merely talking about or planning to help.
 - _____ 15. I enjoy entertaining guests in my home.
 - _____ 16. I can adapt my guidance to fit the maturity of those working with me.
 - _____ 17. I can delegate and assign meaningful work.
 - _____ 18. I have an ability and desire to teach.
 - _____ 19. I am usually able to analyze a situation correctly.
 - _____ 20. I have a natural tendency to encourage others.
 - _____ 21. I am willing to take the initiative in helping other Christians grow in their faith.

- _____ 22. I have an acute awareness of the emotions of other people, such as loneliness, pain, fear, and anger.
- _____ 23. I am a cheerful giver.
- _____ 24. I spend time digging into facts.
- _____ 25. I feel that I have a message from God to deliver to others.
- _____ 26. I can recognize when a person is genuine/honest.
- _____ 27. I am a person of vision (a clear mental portrait of a preferable future given by God). I am able to communicate vision in such a way that others commit to making the vision a reality.
- _____ 28. I am willing to yield to God's will rather than question and waver.
- _____ 29. I would like to be more active in getting the gospel to people in other lands.
- _____ 30. It makes me happy to do things for people in need.
- _____ 31. I am successful in getting a group to do its work joyfully.
- _____ 32. I am able to make strangers feel at ease.
- _____ 33. I have the ability to plan learning approaches.
- _____ 34. I can identify those who need encouragement.
- _____ 35. I have trained Christians to be more obedient disciples of Christ.
- _____ 36. I am willing to do whatever it takes to see others come to Christ.
- _____ 37. I am attracted to people who are hurting.
- _____ 38. I am a generous giver.
- _____ 39. I am able to discover new truths.
- _____ 40. I have spiritual insights from Scripture concerning issues and people that compel me to speak out.
- _____ 41. I can sense when a person is acting in accord with God's will.
- _____ 42. I can trust in God even when things look dark.
- _____ 43. I can determine where God wants a group to go and help it get there.
- _____ 44. I have a strong desire to take the gospel to places where it has never been heard.
- _____ 45. I enjoy reaching out to new people in my church and community.
- _____ 46. I am sensitive to the needs of people.
- _____ 47. I have been able to make effective and efficient plans for accomplishing the goals of a group.
- _____ 48. I often am consulted when fellow Christians are struggling to make difficult decisions.
- _____ 49. I think about how I can comfort and encourage others in my congregation.
- _____ 50. I am able to give spiritual direction to others.
- _____ 51. I am able to present the gospel to lost persons in such a way that they accept the Lord and His salvation.
- _____ 52. I possess an unusual capacity to understand the feelings of those in distress.
- _____ 53. I have a strong sense of stewardship based on the recognition that God owns all things.
- _____ 54. I have delivered to other persons messages that have come directly from God.
- _____ 55. I can sense when a person is acting under God's leadership.
- _____ 56. I try to be in God's will continually and be available for His use.
- _____ 57. I feel that I should take the gospel to people who have different beliefs from me.
- _____ 58. I have an acute awareness of the physical needs of others.
- _____ 59. I am skilled in setting forth positive and precise steps of action.
- _____ 60. I like to meet visitors at church and make them feel welcome.
- _____ 61. I explain Scripture in such a way that others understand it.
- _____ 62. I can usually see spiritual solutions to problems.
- _____ 63. I welcome opportunities to help people who need comfort, consolation, encouragement, and counseling.
- _____ 64. I feel at ease in sharing Christ with nonbelievers.
- _____ 65. I can influence others to perform to their highest God-given potential.
- _____ 66. I recognize the signs of stress and distress in others.
- _____ 67. I desire to give generously and unpretentiously to worthwhile projects and ministries.
- _____ 68. I can organize facts into meaningful relationships.
- _____ 69. God gives me messages to deliver to His people.
- _____ 70. I am able to sense whether people are being honest when they tell of their religious experiences.
- _____ 71. I enjoy presenting the gospel to persons of other cultures and backgrounds.

- _____ 72. I enjoy doing little things that help people.
- _____ 73. I can give a clear, uncomplicated presentation.
- _____ 74. I have been able to apply biblical truth to the specific needs of my church.
- _____ 75. God has used me to encourage others to live Christlike lives.
- _____ 76. I have sensed the need to help other people become more effective in their ministries.
- _____ 77. I like to talk about Jesus to those who do not know Him.
- _____ 78. I have the ability to make strangers feel comfortable in my home.
- _____ 79. I have a wide range of study resources and know how to secure information.
- _____ 80. I feel assured that a situation will change for the glory of God even when the situation seem impossible.

Scoring Your Survey

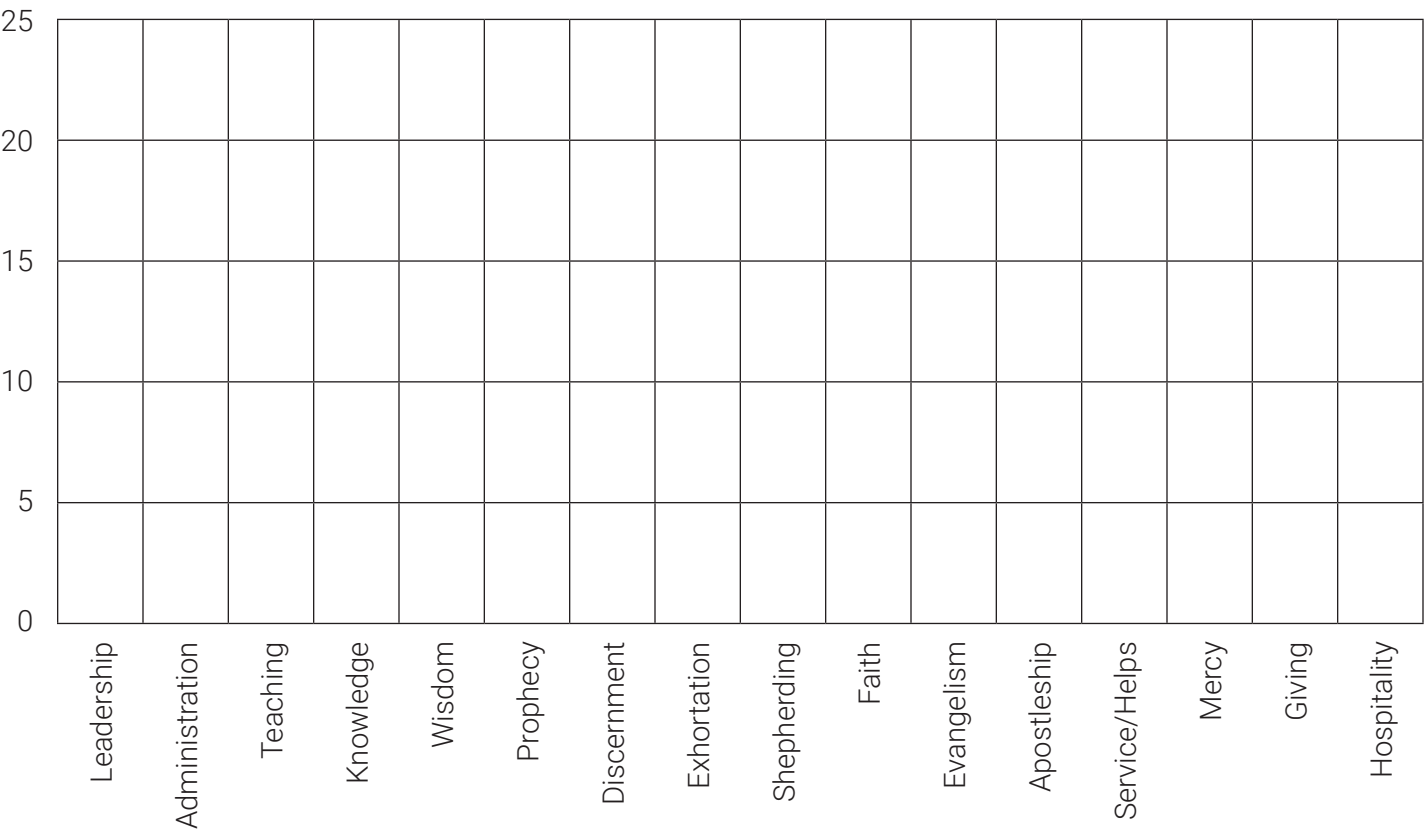
Follow these directions to figure your score for each spiritual gift.

- Place in each box your numerical response (1-5) to the item number which is indicated below the box.
- For each gift, add the numbers in the boxes and put the total in the TOTAL box.

Leadership	Item 6 _____	Item 16 _____	Item 27 _____	Item 43 _____	Item 65 _____	Total _____
Administration	Item 1 _____	Item 17 _____	Item 31 _____	Item 47 _____	Item 59 _____	Total _____
Teaching	Item 2 _____	Item 18 _____	Item 33 _____	Item 61 _____	Item 73 _____	Total _____
Knowledge	Item 9 _____	Item 24 _____	Item 39 _____	Item 68 _____	Item 79 _____	Total _____
Wisdom	Item 3 _____	Item 19 _____	Item 48 _____	Item 62 _____	Item 74 _____	Total _____
Prophecy	Item 10 _____	Item 25 _____	Item 40 _____	Item 54 _____	Item 69 _____	Total _____
Discernment	Item 11 _____	Item 26 _____	Item 41 _____	Item 55 _____	Item 70 _____	Total _____
Exhortation	Item 20 _____	Item 34 _____	Item 49 _____	Item 63 _____	Item 75 _____	Total _____
Shepherding	Item 4 _____	Item 21 _____	Item 35 _____	Item 50 _____	Item 76 _____	Total _____
Faith	Item 12 _____	Item 28 _____	Item 42 _____	Item 56 _____	Item 80 _____	Total _____
Evangelism	Item 5 _____	Item 36 _____	Item 51 _____	Item 64 _____	Item 77 _____	Total _____
Apostleship	Item 13 _____	Item 29 _____	Item 44 _____	Item 57 _____	Item 71 _____	Total _____
Service/Helps	Item 14 _____	Item 30 _____	Item 46 _____	Item 58 _____	Item 72 _____	Total _____
Mercy	Item 7 _____	Item 22 _____	Item 37 _____	Item 52 _____	Item 66 _____	Total _____
Giving	Item 8 _____	Item 23 _____	Item 38 _____	Item 53 _____	Item 67 _____	Total _____
Hospitality	Item 15 _____	Item 32 _____	Item 45 _____	Item 60 _____	Item 78 _____	Total _____

Graphing Your Profile

- 1. For each gift place a mark across the bar at the point that corresponds to your TOTAL for that gift.
- 2. For each gift shade the bar below the mark that you have drawn.
- 3. The resultant graph gives a picture of your gifts. Gifts for which the bars are tall are the ones in which you appear to be strongest. Gifts for which the bars are very short are the ones in which you appear not to be strong.



Now that you have completed the survey, thoughtfully answer the following:

The gifts I have begun to discover in my life are:

- 1.
- 2.
- 3.

- After prayer and worship, I am beginning to sense that God wants me to use my spiritual gifts to serve Christ's body by _____.
- I am not sure yet how God wants me to use my gifts to serve others. But I am committed to prayer and worship, seeking wisdom and opportunities to use the gifts I have received from God.

Ask God to help you know how He has gifted you for service and how you can begin to use this gift in ministry to others.

Interview

Why Membership?

- Membership is a visible expression of **commitment**.
 - God intends for us to live in community.
 - Membership is a commitment to serve.
 - Membership is a commitment to others.
 - Membership is a commitment of others to you.
 - Membership is a commitment to holiness.
- Membership is a visible expression of **agreement**.
 - Through membership a person affirms doctrinal agreement with the church.
- Membership is a visible expression of **submission**.
 - Through membership we submit to accountability from the body. (church discipline)
 - Through membership we submit to the servant authority of our leadership.
- Membership is a visible expression of **identification**.
 - It identifies us visibly as a member of the universal body of Christ.
 - It identifies us practically for matters of personal ministry.
(*data collection, record keeping, assimilation, etc.*)

Requirements for Membership

- Personal salvation through a faith relationship with Jesus Christ.
- Public water baptism by immersion as an outward symbol of obedience and identification with Christ.
- Statement of membership from another church of like faith testifying to the above. (Transfer of letter)
- Completion of Pine Valley's membership class

“So then you are no longer foreigners and strangers, but fellow citizens with the saints, and members of God’s household,”

-EPHESIANS 2:19, HCSB



pinevalleybc.org

3940 Shipyard Blvd.
Wilmington, NC 28403
910.791.1949