



DARRELL TOMASEK
Senior Pastor

In the book of 1 Corinthians, Paul takes time to talk about how God has put the church together. In so doing, he takes up the discussion of how various people have various gifts. The interesting thing is how these various parts come together to make a whole. You can almost think of it as a jigsaw puzzle; many pieces come together to make one whole.

In 1 Corinthians 12, Paul says it this way, *“For just as the body is one and has many members, and all the members of the body, though many, are one body, so it is with Christ. For the body does not consist of one member but of many”* (vs. 12, 14). We

find these two passages of scripture within an explanation of the various spiritual gifts and how they work together.

As we consider these truths, we must think about our own church. How do the various gifts and Northside work together? How is it that God takes the parts here and makes the whole? How is it that God would use your gift? Where is He asking you to plug in?

Yes, that is correct. If you are a Christ follower, you have a spiritual gift. That gift is intended to be used to benefit the church. God is calling you to plug in and volunteer, to engage. As we continue into the Fall, there are a number of things that are going on. We have Children’s Ministry, Youth Ministry, Upward Ministry, Missions opportunities, and the list goes on and on. I would encourage you to pray about where God would have you serve if you are not currently engaged in this way.

Imagine if you will, purchasing a 2000-piece puzzle. You take the puzzle home, you set up a card table in the corner, you find a comfortable chair, and start assembling the puzzle. Every evening for a week you come home and work on this puzzle (I have no idea how long it takes to put together a puzzle, but work with me). You get to the end and what do you discover? One piece is missing. I mean, its just one out of 2000, no big deal, right? Wrong, one out of 2000 makes the puzzle incomplete. There will be a hole right in the middle of the picture. Well, the same is true for the church. It does not matter if 90% of the people are doing what they are called to do. If even one member of the body decides to hold out, the picture is incomplete.

Find your place and help us complete this picture. It will be a beautiful picture indeed.

Honored to be your pastor,



AT A GLANCE

<i>Sunday</i> <i>October 10</i>	9:30a 10:45a 10:45a 5:00p 5:00p 5:00p 5:00p 5:00p	Sunday Morning Bible Study Worship Service Kid’s Church Discipleship Groups Summit Huddle Praiz Kidz/Praiz Kidz, Jr. Sunday Evening Worship Ecclesia
<i>Tuesday</i> <i>October 12</i>	6:00p 6:00p	Celebrate Recovery Zumba Fitness for Women
<i>Wednesday</i> <i>October 13</i>	6:00p 6:00p 6:00p 7:00p	Called Church Conference Student Midweek AWANA Worship Choir rehearsal
<i>Thursday</i> <i>October 14</i>	9:30a 6:00p 6:00p 6:15p	Ladies Bible Study Jr. High Corn Maze Zumba Fitness for Women Trail Life
<i>Saturday</i> <i>October 16</i>	8:30a	Upward Flag Football

.....

<i>Sunday</i> <i>October 17</i>	9:30a 10:45a 10:45a 5:00p 5:00p 5:00p 5:00p 5:00p 5:00p	Sunday Morning Bible Study Worship Service Kid’s Church Discipleship Groups Summit Huddle Praiz Kidz/Praiz Kidz, Jr. Sunday Evening Worship Ecclesia GBA Annual Meeting
<i>Tuesday</i> <i>October 19</i>	6:00p 6:00p	Celebrate Recovery Zumba Fitness for Women
<i>Wednesday</i> <i>October 20</i>	6:00p 6:00p 6:00p 7:00p	Wednesday Night Connect Student Midweek AWANA Worship Choir rehearsal
<i>Thursday</i> <i>October 21</i>	9:30a 6:00p 6:15p	Ladies Bible Study Zumba Fitness for Women Trail Life/AHG
<i>Saturday</i> <i>October 23</i>	8:30a	Upward Flag Football

STOPS ON THE JOURNEY

ALL CALENDAR ITEMS ARE SUBJECT TO CHANGE



FALL FESTIVAL

It is almost time for our Fall Festival. We need your help. Of course we need candy for the booths, but we also need volunteers to work at the booths. Visit a Connect Center on Sunday to sign up as a volunteer, or call the church office to get your name on the schedule. We also need "white elephant" type items for one of the booths.

Bring your pre-wrapped candy or "white elephant" item to a Connect Center or the church office by October 24. Fall Festival is October 31.



TEXAS MISSIONS OFFERING

We are collecting for the Mary Hill Davis offering for Texas Missions through October 17. All money collected goes towards Texas missions. Northside's goal is \$5,000. Please mark your envelope MHD, or donate online through our website or app.



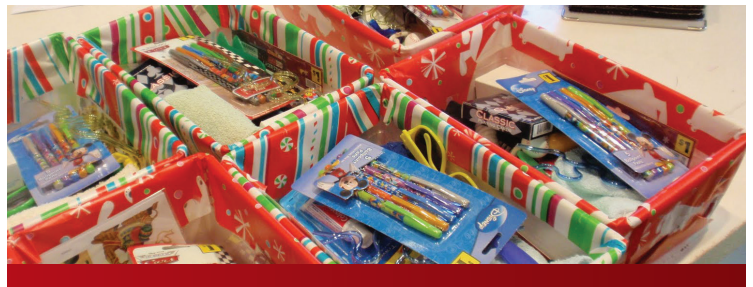
PROPOSED BUDGET FOR 2021-22

You can pick up a copy of our proposed budget for Northside's fiscal year 2021-22 at a Connect Center on Sunday, or come by the church office. There will be a Called Church Conference on Wednesday, October 13, at 6:00pm for discussion of this proposed budget. Voting, without discussion, will be Sunday, October 17. The new budget takes effect November 1.



DISCOVER THE JOURNEY

Are you new to Northside and have questions about how we do things? Sign up for our Discover the Journey class on October 24 right after the worship service. Lunch will be served. Register on the events page of our website. Childcare will be provided.



OPERATION CHRISTMAS CHILD

Operation Christmas Child is underway at Northside. We are collecting coloring books and socks in October. We still have need for wash cloths, soap, combs, brushes, and school supplies. You can bring your items to a Connect Center on Sunday or bring them by the church office during the week.

Of course you can pack your own box and bring it by the church. We will deliver them with our boxes.



GBA ANNUAL MEETING

Northside is hosting the Guadalupe Baptist Association's Annual Meeting on Sunday evening, October 17. Call the church office if you can help serve the meal, greet our visitors, etc.

..:SHORTLINES:..

ANNIVERSERIES: Dean Meade celebrates his eighth anniversary as Discipleship Pastor on October 6.

JUNIOR HIGH CORN MAZE: Register on the events page of our website. Junior High students will visit the corn maze on October 14 from 6:00 - 9:00pm. Cost is \$5.

LADIES BIBLE STUDY: Its not too late to join the Thursday Morning Women's Bible Study. They meet at 9:30am. The study is *How Much More* by Lisa Harper. Books are \$15.

UPWARD VOLUNTEERS: Are you ready for some (flag) football? We could use volunteers to greet our guests on Saturday mornings. Need exercise? We also need referees. Like donuts for breakfast? Call the church office to volunteer for a morning or a season.

VALET PARKING: We have a limited number of handicapped parking places. We are now offering valet parking on Sunday mornings if the spaces are full and it is difficult for you to walk a great distance. Pull up to the end door of the worship center in the main parking lot. You can claim your car after the service.

NORTHSIDE BAPTIST SCHOOL: The school is taking registrations for the 21-22 school year. The school offers classes for 2 year olds through 5th grade. Contact the school office at 578-5601 for more information.

FIRST IMPRESSIONS: If you are interested in helping in this area, contact the church office. First Impressions includes Parking Lot Team, Welcome Center, and Section Hosts. Call to volunteer or get more information.

YOUTUBE CHANNEL: We have started a new Youtube channel. This channel has our Sunday morning live stream and videos from the church. Help us by going to our website, scroll to the bottom of the page, click youtube button, and subscribe. This is the fastest way to find us. We need 100 subscribers before we can have a custom URL.

MEALS ON WHEELS: The need for these meals has increased in the last couple of years. Volunteers are needed for the Monday meal deliveries. Please contact Jenn at 361-576-2189 or email her at jenn@mowvictoria.org

CHRIST'S KITCHEN: Volunteers are needed at Christ's Kitchen. Come for an hour, come all day (7:30am - 1:30pm). Call Cindy at 979-540-8586 with questions or if you can help.

PICTURE UPDATE: Our membership software has the ability to run directories. Please update your picture either in the app or by sending a photo to office@nbcvictoria.org.

SYMPATHY TO AND PRAYERS FOR: Thomas Phillips on his death, and Megan DeLeon on the death of her mother. We join together as a family of faith and pray as we celebrate Christ's gift of eternal life.

THE RECORD SPEAKS

MINISTRY ACTION PLAN

Received September 19

Budget Receipts	69,411.46
Designated & Other:	770.00
Total Weekly Receipts:	70,181.46

Received September 26

Budget Receipts:	21,662.95
Designated & Other:	1,055.00
Total Weekly Receipts:	22,717.95

Received October 3

Budget Receipts:	49,058.37
Designated & Other:	1,558.00
Total Weekly Receipts:	50,616.37

Year-to-Date Need:	1,564,570.00
Year-to-Date Received:	1,460,485.09

BIBLE STUDY

September 19	312
September 26	267
October	291

WORSHIP

September 19	428
September 26	359
October 3	369



IN FOCUS

FALL FESTIVAL

OCTOBER 31

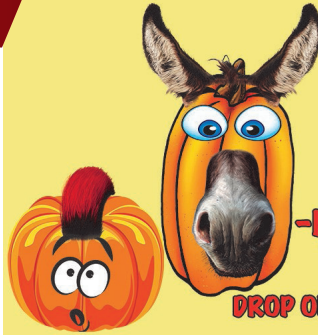
6:00- 8:00 PM.

- WE NEED TONS OF CANDY

-SIGN UP IN A BOOTH

-NEED WHITE ELEPHANT ITEMS:
TOYS (USED OR NEW)/KNICK KNACKS

DROP OFF AT A CONNECT CENTER OR CHURCH OFFICE



— journey ▲ together —

NORTHSIDE STAFF

DARRELL TOMASEK *Senior Pastor*
dtomasek@nbcvictoria.org

DEAN MEADE *Discipleship Pastor*
deanmeade@nbcvictoria.org

CODY MOORE *Student Pastor*
codymoore@nbcvictoria.org

DAVE BENEFIELD *Children's Minister*
davebenefield@nbcvictoria.org

4100 North Laurent | Victoria, Texas 77901 | Main: 361.578.1568 | Prayer: 361.277.1831 | www.nbcvictoria.org

Sundays
9:30am Bible Study Groups
10:45am Worship

Main: 361.578.1568
Prayer: 361.277.1831
www.nbcvictoria.org

northside
BAPTIST CHURCH

4100 North Laurent
Victoria, Texas 77901

ADDRESS SERVICE REQUESTED