

MEN'S FELLOWSHIP CAMPING!



July 22, 23, 24

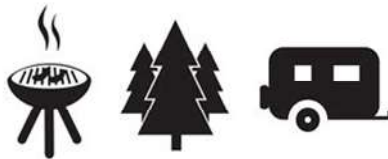
35.865895, -106.687286

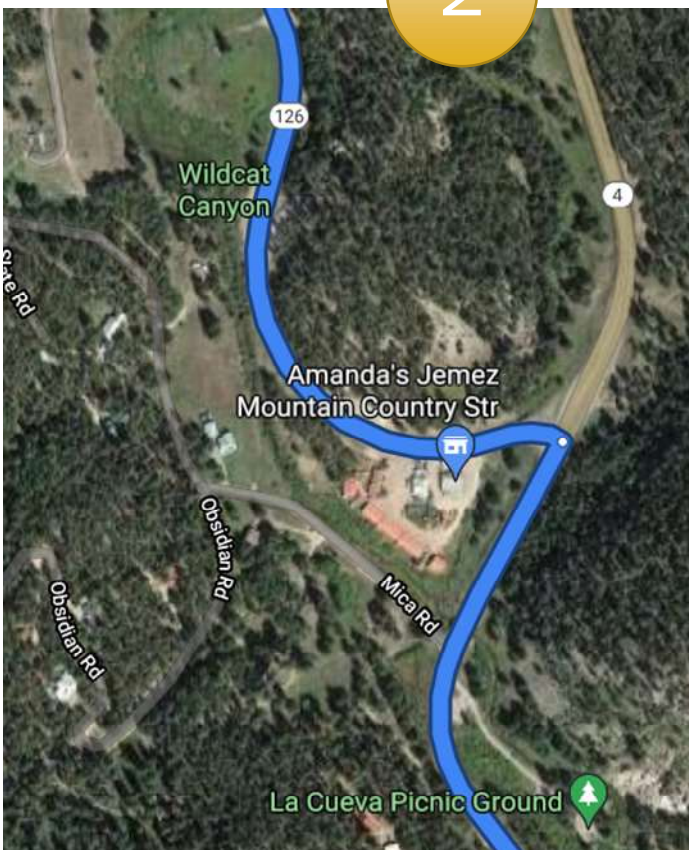
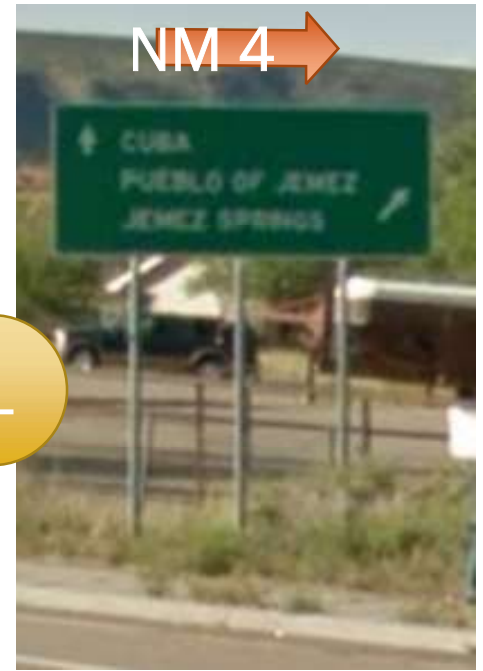
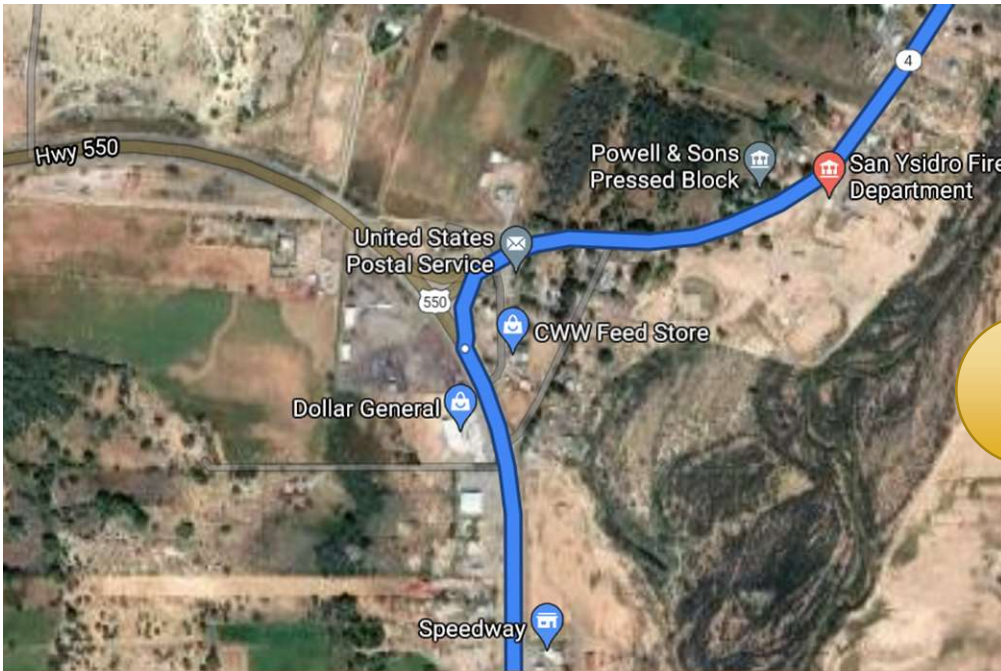
Fenton Lake / Jemez Area Campout



General Directions:

- Take NM 550 North toward Cuba/ Farmington
- Turn North (right) toward Jemez on NM 4 just past San Ysidro
- Follow NM 4 up and up into cooler temperatures and turn Left on NM 126
- Take Left on FS376 (gravel) and go ~3.9 mi





- LOOK FOR "LWC" PAPER PLATES
- Roads are automobile passable
- Room for RVs and Trailers
- Day trips to the lake, river, ATVing, hiking, etc.