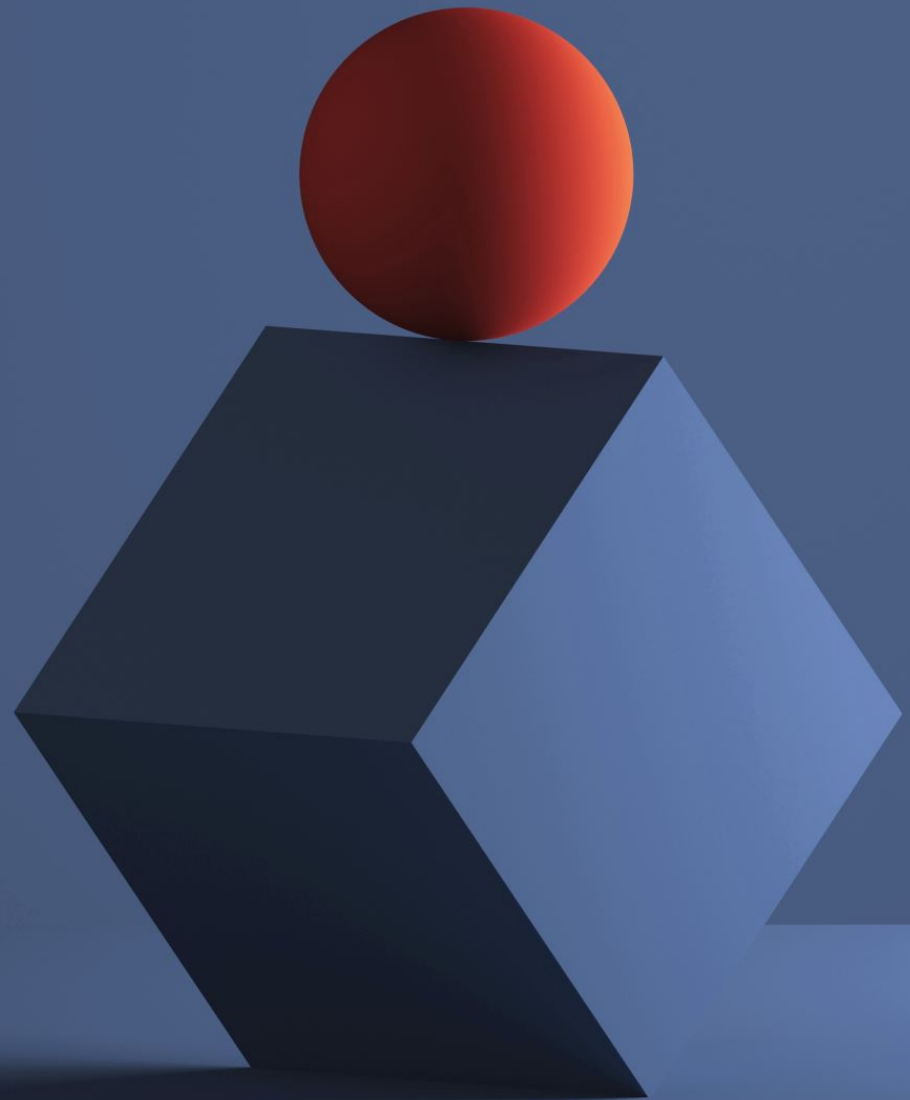


THE REVELATION OF JESUS CHRIST

Door of Faith Apostolic Center

Honolulu, HI.

7/15/21



THE REVELATION OF JESUS CHRIST

SESSION 1

Introduction

BACKGROUND OF THE REVELATION

**Written by the
Apostle John**

**Around 95
A.D.**

**Written on the
Isle of Patmos**

WAYS TO INTERPRET THE REVELATION

- Allegorical – purely symbolic
- Historical – 2 ways to interpret
 - Pretorist View – revelation deals with early church history
 - Symbolic View – predicts the future of the Church Age but not future events
- Literal – it's Prophetic – A literal writing with futuristic or prophetic elements regarding the events beginning in Chapter 4

ALLEGORICAL

Everything is about symbolism: good vs. evil, paganism vs. Christianity, and the ultimate triumph of Christ in our lives. The book is seen as a spiritual allegory for the comfort and encouragement of the church, denying prophecies of literal, future events.

HISTORICAL

A) Preterist view – deals with church history that includes only the early church's struggle against Imperial Rome in the 1st Century; John used symbolic code to describe events of his day.

HISTORICAL

B) Symbolic View – a panoramic interpretation of the Church’s historical struggle against the world system from the 1st Century through modern times; it predicts the future of the “church age”, not of end-time events.

LITERAL/FUTURISTIC

The events beginning in Chapter 4 are futuristic related to the time directly preceding and including Jesus' Return. Frequent symbolism is recognized, but events will be fulfilled in a literal way.

OUTLINE OF THE REVELATION FROM REVELATION 1:19

“have seen” – Ch. 1 – (The Appearance of Jesus)

“which are” – Ch. 2-3 – (The Church Age)

“which will take place after this” – Ch. 4–22

TIMELINE OF END TIME EVENTS

