



# LIFT OFF

# 2021

# GRACE CITY

GRACE CITY  
— CHURCH —



# LIFT OFF

## STAGE 3

**"OUR GOAL HAS NEVER BEEN TO BUILD A**







In 2008, thirty-six dreamers decided to try something wild. They decided to plant a church.

For them, it felt like trying to fly to the moon.

But while the means were unclear, the mission was not. The team had a passion for the Word of God, for strong families led by strong men, and for lost people meeting and following Jesus.

So, sitting in a small circle in a borrowed office, a vote was taken: hands were raised and heads nodded. A decision had been made.

Grace City Church was born.

Seven years later Grace City had outgrown 5 different borrowed spaces. With more people coming every week, it was time to secure a permanent home. **Stage 1 Mission Advance** was launched to raise enough money to purchase 13 acres on Melody Lane.

In 2018, with property secured and offsite improvements completed, it was time to start construction. **Stage 2 Building Home** was the resource initiative launched to raise enough money over three years to actually build a home. Construction began, people stepped up, and pledges poured in.

On October 18th, 2020, while other churches were closed, Grace City opened its doors and hosted the first service in our new home.

But that was only the beginning. Just as Apollo 8's mission was never to merely reach Earth's orbit, Grace City's mission was never to merely build a home. Our mission has been to build a vibrant HUB of activity where lives are changed and legacies are transformed.

The following pages articulate our mission-critical next step:

**Stage 3 Lift Off.** As you will see, the envisioned plans include strategic building projects and ministry initiatives. The plans are bold. The permits are drawn. We stand ready to build at the pace people give.

It's time for Lift Off.

*Pastor Josh and Sharon*



**LANDING POINT BUT A LAUNCH PAD."**



# THE PATIO



View from Junction



View from Landing looking towards Wenatchee



## FEATURES:

- Outdoor kitchen and BBQs
- Double-sided wood fireplace
- Multi-level outdoor seating area



# THE BARN

## FEATURES:

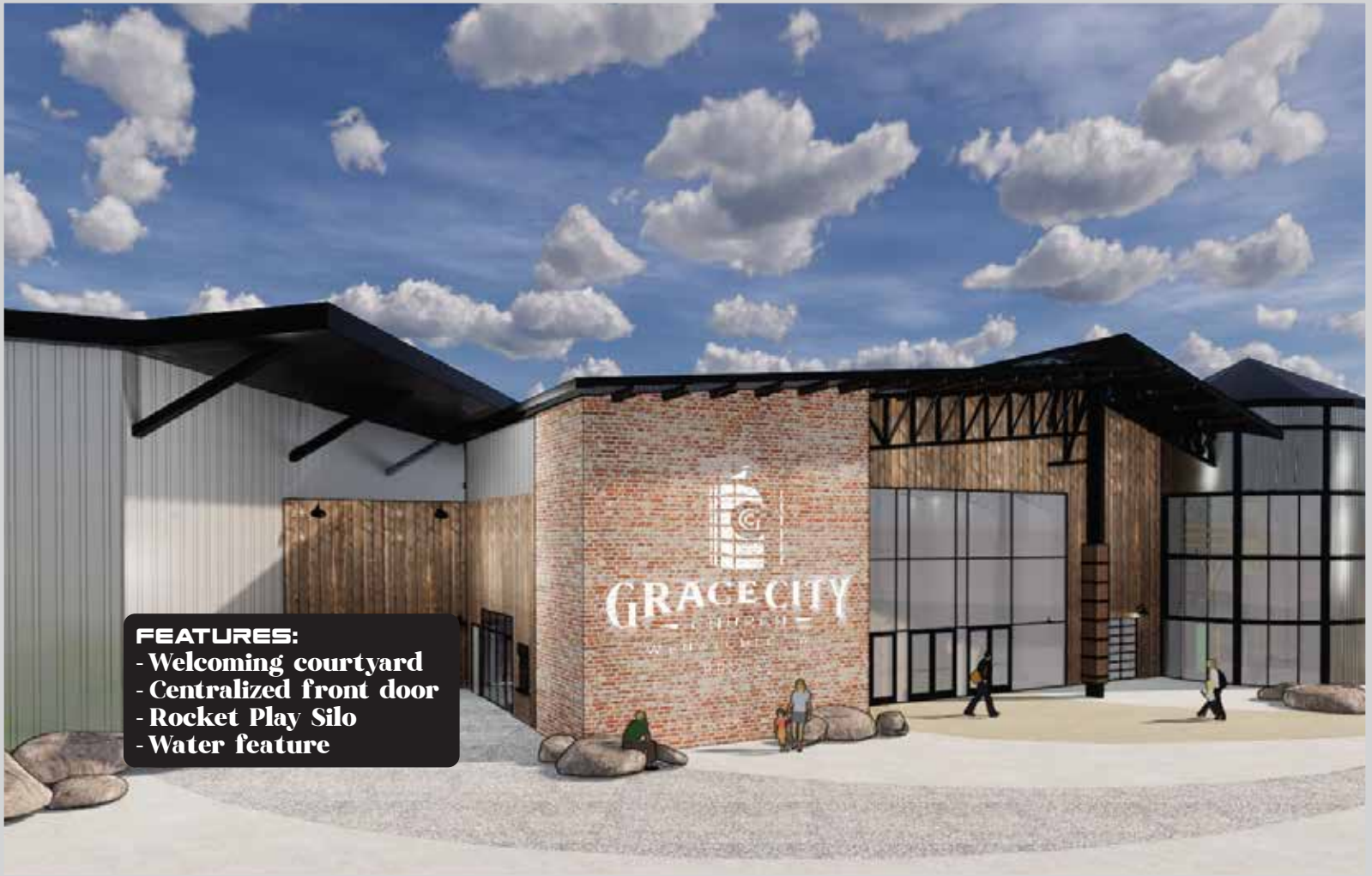
- Outdoor party space
- Future office and training space
- Storage / workshop



## FEATURES:

Future indoor event space for Anchored, weddings, The Well, Stronger Men, Conferences, and more.



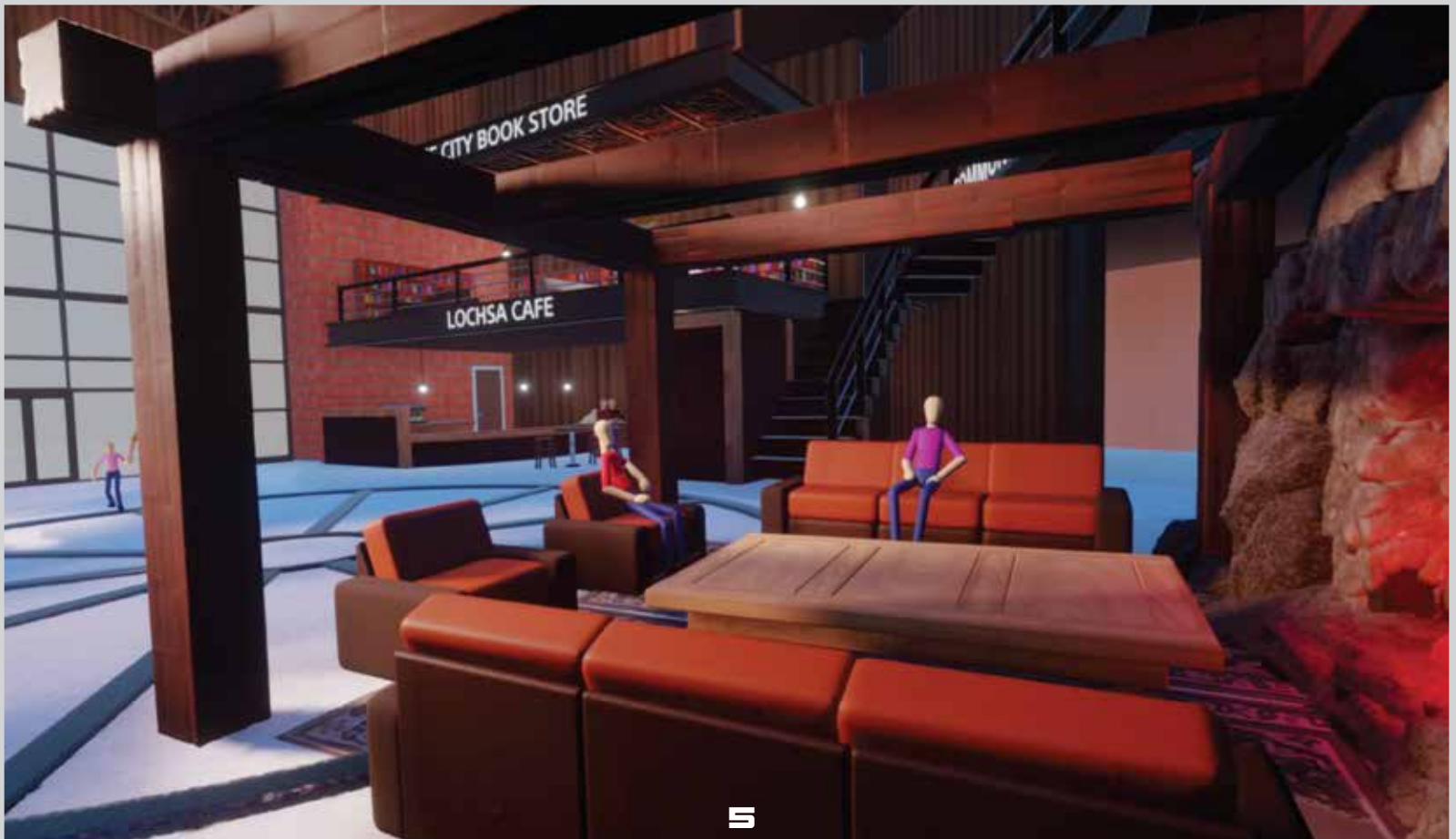
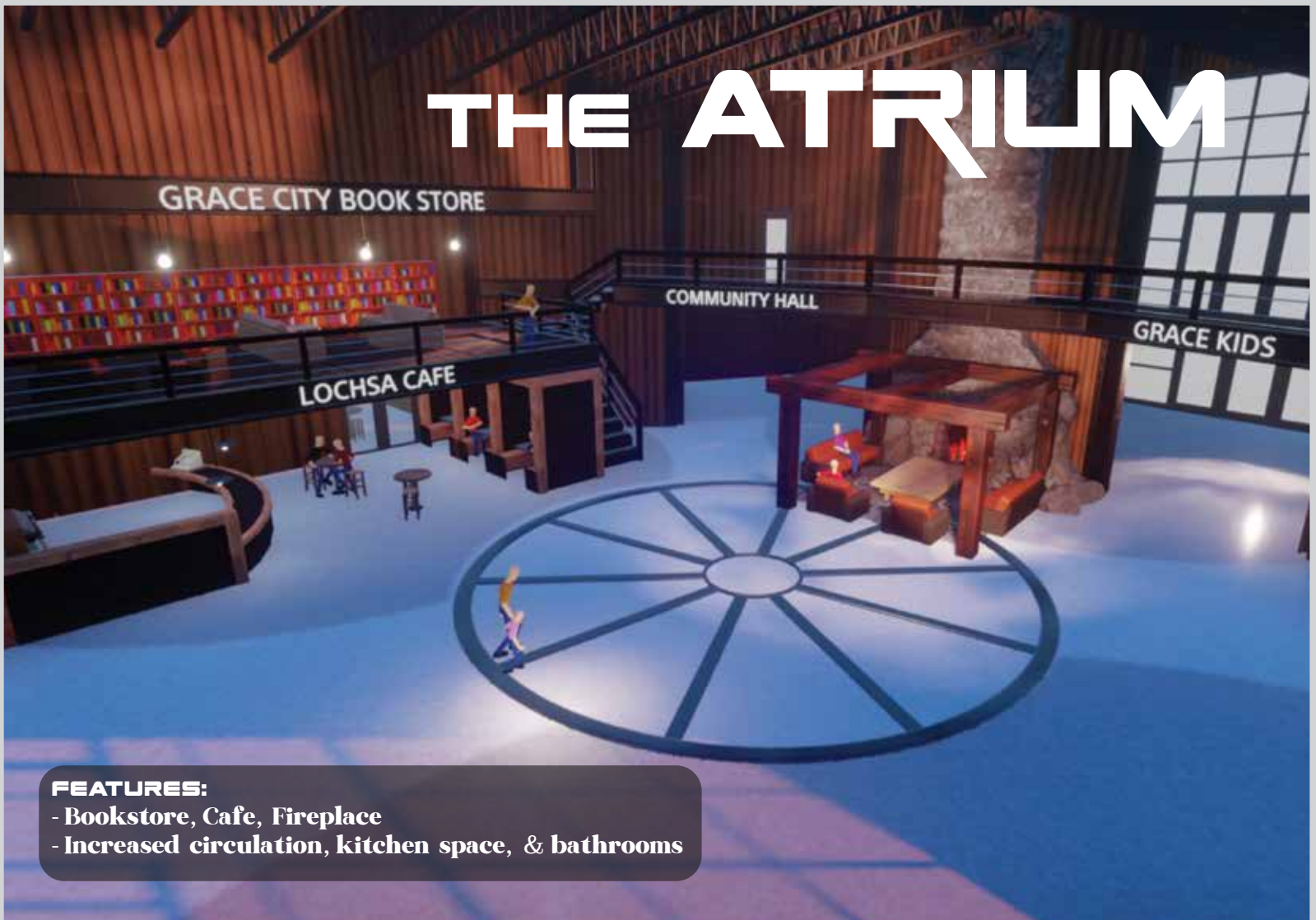


# THE FRONT DOOR





# THE ATRIUM





# THE ROCKET PLAY SILO





MISSION  
EARTH RISE &  
ORBIT

MISSION  
LAUNCH

MISSION  
CONTROL

MISSION  
PREP



A large rocket is shown launching, with a massive plume of fire and smoke at its base. The rocket is white with black and red accents. It is surrounded by a red metal structure, likely part of the launch pad. The background is a clear blue sky.

# LIFT OFF FAQs

**1 What is LIFT OFF?**  
**LIFT OFF** is our resource initiative to raise the necessary funds to launch Stage 3. It is our bold attempt to accelerate the mission of God through Grace City Church.

**2 How does LIFT OFF work?**  
During **LIFT OFF** we encourage our people to give beyond their normal tithes and offerings so we can go beyond normal ministry. On commitment Sunday, everyone brings a one-time cash gift and the **LIFT OFF** card indicating their over-and-above 12-month pledge.

**3 What is our Fundraising Goal?**  
The projects and new ministries we hope to launch in Stage 3 total \$4.3M *beyond* our operational budget. We already have \$1.2M and hope to raise the balance of \$3.1M in cash gifts and pledges over the next 12 months.

**WE WANT TO IMPACT THE**



#### **4 Will There Be More Space For Kids and Youth?**

Absolutely. One of our primary motivations is to create more space for our growing youth ministries. Did you know that 589 new children have checked into Grace Kids since we opened our doors? Lift Off will provide critical relief for our Grace Kids and Anchored ministries that are literally bursting at the seams!

#### **5 When can we start construction?**

We have plans and permits in-hand for all proposed projects and can start building as soon as the money comes in. We are ready to build and will go at the pace our people are able to give.

#### **6 When will we finish?**

Normally, the projects we have slated to build could be done in 9-10 months. That timeline is more tentative given circumstances outside of our control with material and supply chain disruptions. That said, we would hope to be done by Easter of next year.

#### **7 Are there more plans than currently reflected in LIFT OFF?**

Yes. Our master plan includes more training space, parking, preschool & kids' space, outdoor play-spaces for kids, a gym, and more. We have more vision than resources and are committed to being ready to build as the Lord provides.

#### **8 Is Grace City connected to a denomination that can help?**

No. We are a home-grown, hometown start-up with no denominational affiliation. All funds raised for operations and capital projects come locally from the members of Grace City.



# LEADERSHIP ELDERS

As the leaders of Grace City Church, the elders serve our family by taking responsibility for the spiritual, financial, and missional health of our house.



**Josh McPherson**  
Senior Pastor | Lead Elder



**Adam James**  
Executive Pastor | City Groups



**Kent McMullen**  
Executive Pastor | Grace Teams



**Chris Speten**  
Executive Pastor | Operations



# LEADERSHIP ESAT

## Elder Support & Advisory Team

ESAT provides counsel to the elders on all major financial decisions related to property acquisition, building projects, and capital improvements.



**Josh Carlson**  
Co-Founder | Iceberg  
Corporate Executive



**Sean P Gross**  
Founder & Owner | Telos  
Wealth Management



**Dave Haehl**  
Co-Founder &  
President | Haehl Sales



**Gregg Smith**  
Owner | Smith Excavation &  
KBI Construction



**Mike Taylor**  
Owner | Taylor Orchards Inc.  
VP of Sales & Marketing | Stemilt



**Jeff Weber**  
Co-Founder | Legwork  
President | Firefly



**Greg McPherson**  
Founder & President |  
LifeTrac Family Ministries



**Kirk Hudson**  
Managing Director | Chelan  
County PUD



**Kyle Strong, CPA**  
Executive Pastor, CFO |  
Grace City Church



# WE EXIST TO HELP MORE PEOPLE

## THE BARN:

- Storage / Workshop
- Future offices for staff and interns
- Future training rooms
- Future event space for Anchored, The Well, Stronger Men, Weddings, Reception

## ROCKET PLAY SILO:

- 3-level indoor play structure
- Grace Kids, day drop for moms

## THE ATRIUM:

- Centralized front door
- Bookstore
- Lochsa Cafe
- Added Community Hall upstairs entrance and critical interior circulation space

# SO MORE PEOPLE WILL KNOW GOD,



# MEET, LOVE, & FOLLOW JESUS

## THE LANDING:

- Rooftop meeting space, accessed via the Atrium, Back Patio, or Community Hall

## BACK PATIO:

- Outdoor kitchen and fireplace
- Upper landing with valley views

LIVE FREE, & DO GOOD IN GOD'S WORLD



# OUR PROJECT TEAM



## **Josh McPherson | Senior Pastor**

Josh's love for beauty and space combined with an unending imagination is the driving creative force behind Grace City's home. With a background in building & real estate, he brings an intuitive sense for master planning, conceptual development, architecture, and space. He loves designing spaces that combine rugged nostalgia with functional practicality and finds great satisfaction in creating places people want to be.



## **Glen Stefanko | Job Superintendent | KBI Construction**

Glen is truly a renaissance man. In his vocations he has been a structural engineer, draftsman, fabricator & installer, business owner, home & restaurant designer, and general contractor. His creative eye and rugged craftsmanship make him one of Pastor Josh's favorite sandbox building buddies. As a devoted family man, when he's not building something beautiful, he enjoys mountaineering, adventures in the outdoors with his kids, coaching soccer, and drinking coffee with the love of his life, Shelly.



## **Johnny Davis | Sr. Creative Director | Storyland Studios**

Johnny Davis is a one-of-a-kind purveyor of possibility through hand-drawn artistry and storytelling. Gifted at helping leaders connect their vision in three-dimension while telling a cohesive story, Johnny is one of Josh's favorites to call and say, "Hey Johnny, I had an idea..." and watch an idea come to life on the screen before him. He is also highly-skilled at drawing any Disney princess or character on demand.





### **Chris Speten | Executive Pastor | Operations**

Prior to joining the staff at Grace City 10 years ago, Chris spent 14 years in construction sales, project management, and civil estimating. Chris serves as our in-house project manager and owner-representative to ensure all projects are completed on time and under budget. He played a key role in our two prior initiatives and managed our recent \$12M dollar construction project.



### **Matt Molsberry, AIA, NCARB | Principle Architect Storyland Studios**

Matt serves Storyland Studios as a Principle Architect where he oversees the master planning of innovative, immersive environments and themed spaces. A CalPoly alum, he has emerged as one of the nation's leading church architects, working with some of the largest churches in the country.



### **Kyle Strong, CPA | Executive Pastor | CFO**

Kyle has over 15 years of experience in financial services, including commercial banking and public accounting. Prior to Grace City, Kyle managed a public accounting office for one of the nation's largest accounting firms. Kyle's sharp financial acumen and strategic, high-level thinking are critical components in helping the church's Executive Team architect the future. He oversees all financial aspects of the project, ensuring efficiency & integrity at every level.

### **KBI Construction**

Kingdom Builders Incorporated is a different kind of business building a better kind of world, where business and generosity meet to advance the mission of the Church. As a newly-founded commercial construction company, their goal is to build the Kingdom through providing superior construction services at wholesale costs to Grace City...essentially donating their profit to our church. With little overhead and transparent billing, this unique partnership allows donors to know every dollar is stretched to maximize impact and return on investment.



# BUILD

There were multiple individual rockets that made up the stage 3 burn that boosted Apollo 8 out of orbit and to the moon. These are the multiple rockets we hope to fire as a result of our Stage 3 Initiative to boost us into the future and accelerate the mission of Grace City: **BUILD, TRAIN, REACH.**

## THE ATRIUM

The Atrium will give our house a proper front door to welcome all guests and create a single front entrance, increase needed circulation space, and add a back-of-house access point into the Community Hall.



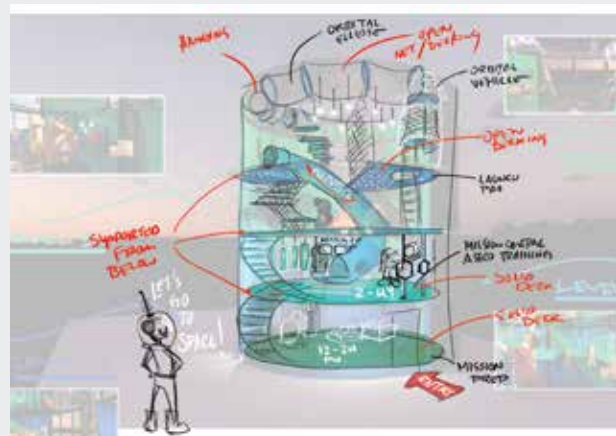
## THE LOCHSA CAFE

Bible study with friends? A bit of work to do? Stop in for your favorite drink or a small bite in one of the old-fashioned booths. All net proceeds will support ministries at Grace City & beyond. *\*Fun fact...Greg McPherson grew up fishing along the banks of the Lochsa River (pronounced "Lock-saw") where his family ran the Lochsa Log Cabins.*



## THE ROCKET SILO

Four stories of sheer fun, this imaginative space offers kids a safe place to run and play while moms rest and relax. Fully enclosed and climate-controlled for year-round access, its theme tells the story of NASA's Apollo Space Program. Kids' imaginations will run with dreams of adventure, exploration, and patriotism in this space designed just for them.

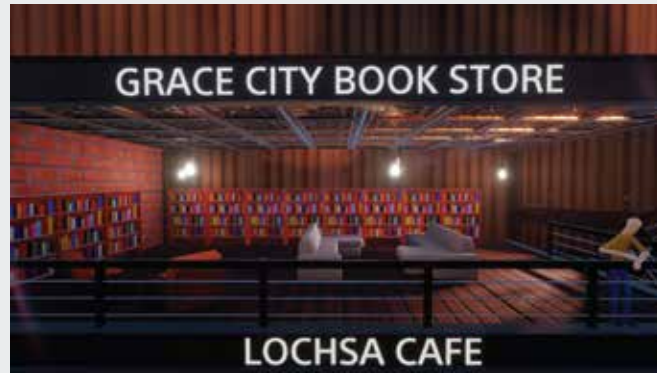




# BUILD

## THE BOOK LOFT

Situated overlooking the Atrium, this elevated bookstore will house some of Pastor Josh's favorite reads, as well as a host of books on assorted topics. There's a good chance any work referenced from the stage will be offered here. Grab a book, find a comfy seat, and dive in!



## THE BACK PATIO & LANDING

Every house needs an outdoor place for people to hang. The patio offers a full outdoor kitchen with wood-burning fireplace, an elevated outdoor patio--a secluded place for meetings, gatherings, break-outs, lunch, or just hanging out and enjoying the sweeping views of Wenatchee.



## THE BARN

The Barn rounds out the property's "harvest houses." Silos, packing sheds, and now an old-fashioned barn! Creating a secluded space for outdoor receptions and parties, it will also serve as future office space for staff and interns, large events, Vector Academy training rooms, Anchored, and critical over-flow space for Grace Kids.





# STAGE 3 ROCKETS

## TRAIN

### VECTOR ACADEMY

Designed as a 9-month capstone intensive, Vector Academy is a robustly academic and ruggedly practical internship immersion. Vector is designed to launch courageous young leaders into any vocation and endeavor, fully equipped to engage worldviews, shape culture, and impact the world they live in for good. We hope to grow Vector Academy into a world-class training experience for college-age students.

**LIFT OFF** will help by funding the start-up operational costs and providing scholarships for every student, so that no one is turned away because of money.

### LIFETRAC UNIVERSITY

It is with great excitement that we look to launch **LifeTrac University**, the new training arm of Grace City Church. Designed for anyone who wants to grow in their faith, **LifeTrac University** will carry on the spirit and vision of Greg & Candy McPherson's 39-year ministry by offering classes & training events to the local Church and region on topics like marriage, sexuality, family, finances, grief, freedom, worldview, and culture.

### FORGED

This one-of-a-kind discipleship tool will help dads and sons become noble men. Built around the 4 key roles and 12 essential virtues of manhood, FORGED will help men of all ages show initiative, pursue vision, take responsibility, and stand on principle in a world that is intent on tearing down biblical masculinity. In short, FORGED is designed to help sons become men and dads to become better men. Because when the men get stronger, everything gets better.

### MANCARD

A manhood rite of passage, ManCard is designed to call boys into a life of valor, honor, and nobility. Complete with adventure-cycles that will challenge each boy's physical grit and mental fortitude while giving them once in a lifetime experiences with other men, ManCard is intentionally aggressive, wildly fun, and deeply impactful. ManCard is where we, as the men of this house, come around our young men to affirm, encourage, and launch them confidently into noble manhood.

# THINK DISCERN ACT

**"THE MEN FROM ISSACHAR UNDERSTOOD THE TIMES AND  
KNEW WHAT ISRAEL SHOULD DO." - 1 CHRONICLES 12:32**



# REACH

# STAGE 3 ROCKETS

## CONFERENCES

Designed as high-impact events, these conferences will gather world-class speakers and hungry learners in life-changing weekend experiences. We will kick off our conference ministry this Fall with The Well Women's Conference, followed by TheManConference. In the winter and spring of 2022, we will host a Pastors' Conference and Marriage Conference. It is our hope to make these annual events.

**LIFT OFF** will help underwrite the costs of starting these events as we leverage our house to serve leaders, pastors, and churches from all over the region.

## REGIONAL JAIL CHAPLAINCY

With 100's of people incarcerated every year in our valley, we are very excited to step into this mission field. Recently awarded the contract to lead this vital community ministry, we hope to provide in-jail church services and one-on-one discipleship with the goal of reducing recidivism and helping inmates get back on their feet with work and healthy relationships once released.

## ROATAN CHURCH BUILD

Pastor Hank and Kathy Stanley of Roatan, Honduras are truly a part of the Grace City family. They have a great vision and heart for their community and have faithfully served Jesus for decades. Many in our church have traveled to the island of Roatan with our Anchored Student Ministry to see firsthand the incredible Kingdom work these precious saints carry out in the hard and broken places of Honduras. We've had the privilege of helping them build a school, homes for single mothers, and the start of their new church facility. Now it's time to help them finish it!

**LIFT OFF** will allow us to bless the Stanleys with a gift that will fund the completion of their new church home, and we could not be more excited!

## UGANDAN PASTOR TRAINING CENTER

Started by Grace City member Logan Heine, Son Mission is a non-profit organization dedicated to training leaders & pastors to make disciples in the Busia District of Uganda, Africa. They have a vision of building a HUB to house a missionary hostel, trade school for orphans, and a training center for mentors and pastors.

**LIFT OFF** will allow us to build these pastors a brand new college where hundreds of pastors will be trained to plant churches in the Ugandan bush.

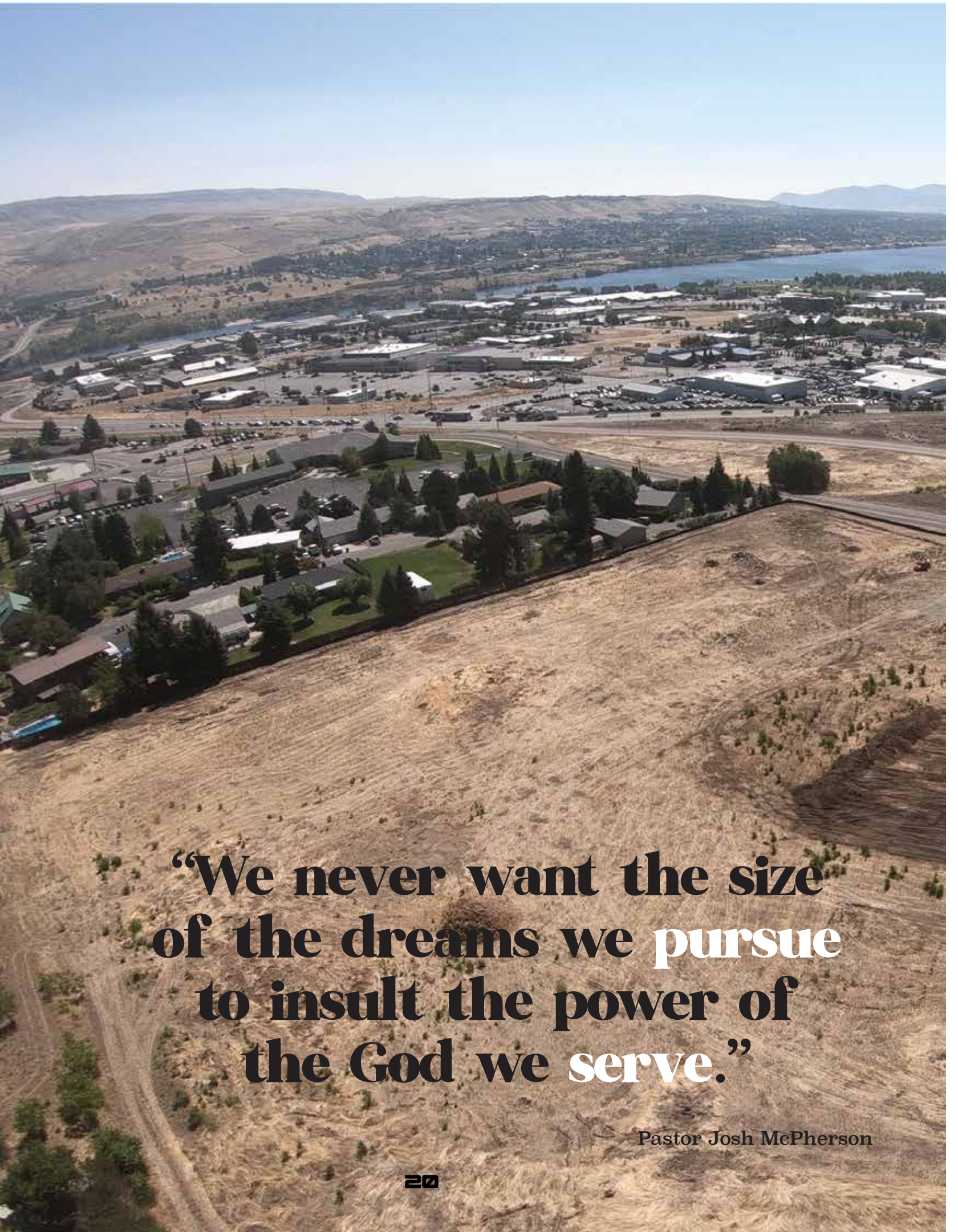
## GRACE CITY WORSHIP

We are a people who were made to sing, and every move of God has an accompanying soundtrack of worship. The Christian faith is rich with saints of every age writing original music for the Church for their own generation to sing. Grace City is excited to announce the launch of our worship label *Grace City Worship*. Beginning with a 3-anthem EP, we plan on releasing a full-length worship album of original music this Fall, available on Spotify & iTunes...the first of many to come!

## PUBLICATION PLATFORM

This exciting initiative will create a comprehensive digital archive of all Grace City content, including sermon notes, transcripts, sermon outlines, podcasts, blogs, and long-form articles.



An aerial photograph showing a town with various buildings and parking lots, situated next to a large body of water. In the foreground, a dry, brown hillside slopes down towards the town. The sky is clear and blue.

**“We never want the size  
of the dreams we pursue  
to insult the power of  
the God we serve.”**

Pastor Josh McPherson









# THE APOLLO 8 STORY

On the morning of December 21st, 1968, three men climbed into a 363-foot rocket equipped to deliver 7.6 million pounds of thrust, or the equivalent of 160 million horsepower, and strapped themselves in for the ride.

Their mission was full of risk. Man had never left Earth's orbit before, and the rocket to which their lives were now attached had never been successfully tested.

The Cold War had grown colder as Russia pulled decisively ahead in the "space race." With the world's first satellite, Sputnik, flying over American soil every few hours, Russia's capabilities to deliver nuclear warheads were unknown and terrifying. America's space agency, NASA, had no other option. Though the mission was full of risk, they had to go.

Apollo 8 had been hatched 4 months earlier and rushed to the launch pad. Now, rows of NASA experts lined computers at Mission Control wondering what they might have missed. If the mission failed, it would be more than a few lives lost. It would mean the loss of funding, the loss of Americans' confidence, and potentially the loss of the Cold War.

Around them, America was coming apart at the seams. Cities burned as civil unrest hit a boiling point. Race riots and political assassinations dominated the news. A divided nation turned its collective attention to three men strapped onto the equivalent of a nuclear bomb with wings.


"4, 3, 2..."

The Saturn V rocket ignited, flames billowed, and the 7.6 million pound beast broke free from its constraints and slowly lifted off the ground. The screaming engines thundered, consuming a swimming pool of fuel every second.

It was the job of the stage 1 rocket to get the Apollo 8 machine off the ground and send it catapulting away from Earth. Soon it would burn out and the stage 2 rocket would fire, hurtling the men towards the heavens at a breathtaking speed of 15,000 miles per hour.

At 853 miles above the surface of the earth, Apollo 8 leveled off and successfully entered Earth's orbit. But the team's eyes were already fixed on a greater prize... becoming the first men to leave Earth's orbit and travel to the moon, some 240,000 miles away.





If they were to successfully make that trip, they'd need to ensure every calculation was dialed. If they approached the moon too shallow, they'd skip off its atmosphere and spin helplessly into deep space. If they came in too steep, they'd crash onto the surface of the moon. Statistically, the odds of successfully orbiting the moon were like threading a needle from a football field away.

But to even get to the moon, they'd need a huge kick of power. That was the job of the Stage 3 rockets. Anything less than a speed of 24,000 mph and the Earth's gravitational pull would doom the Apollo 8 to "merely" orbiting the Earth. Of all the things that could go wrong, this was the outcome they feared the most. Dying while trying was acceptable. Living with failure was something else entirely.

All of the work, risk, sacrifice, training; all of the thousands of man hours spent fabricating parts and building the rocket; all of the political expediting; all of the calculations and engineering; all of the \$4 billion in expenditure now came down to this moment.

Would the Stage 3 rockets fire?

A few months earlier during testing, the Stage 3 rockets had failed catastrophically. Though there was no time to retest it, scientists were still hopeful they had fixed the problem. But had they?

Everything boiled down to this moment.

"Apollo 8, this is Houston," the radio crackled. "You are go for TLI."

"Copy, Houston. We are a go for TLI."

And with that, Frank Borman, the Apollo 8 pilot, reached forward and touched the button.

Silence followed.

The astronauts held their breath. This was the moment they had feared most. Then the ignition sequence kicked in with a roar and the Stage 3 rockets ignited.

The rockets' propulsion pushed the astronauts back in their seats. It had worked. But would it be enough to get sufficient speed to break the Earth's orbit?

All eyes were locked on the speedometer, spinning wildly like a slot machine at a casino. The astronauts held their breath for the entire Stage 3 burn. Finally, the rockets burned all its fuel and shut down. All was silent in the capsule. The astronauts checked their dial.

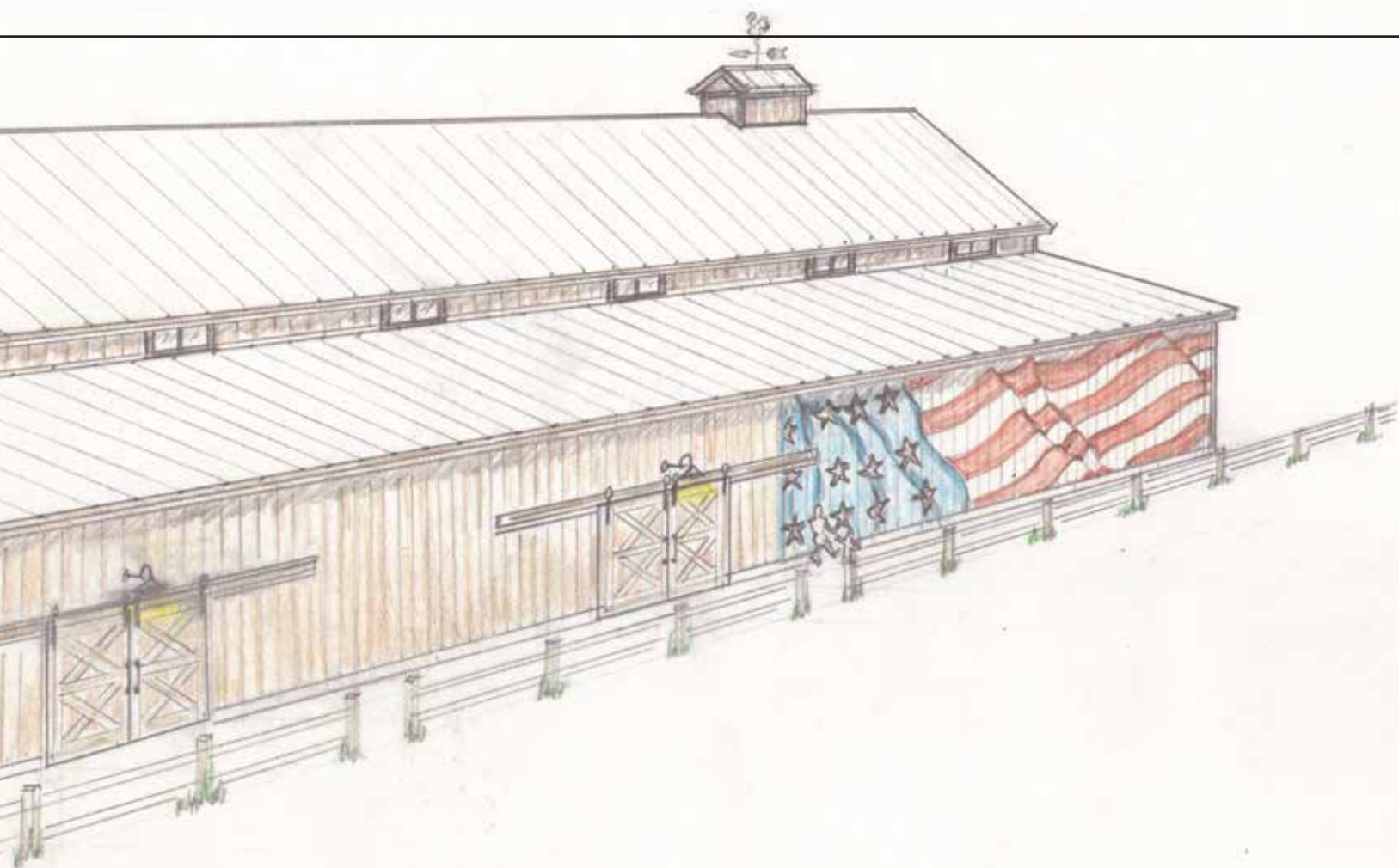
24,247 mph.

Perfect for translunar injection. They were off to the moon.









*Glen Stefanko*  
Glen Stefanko





**GRACE CITY**  
— CHURCH —  
WENATCHEE, WA  
USA