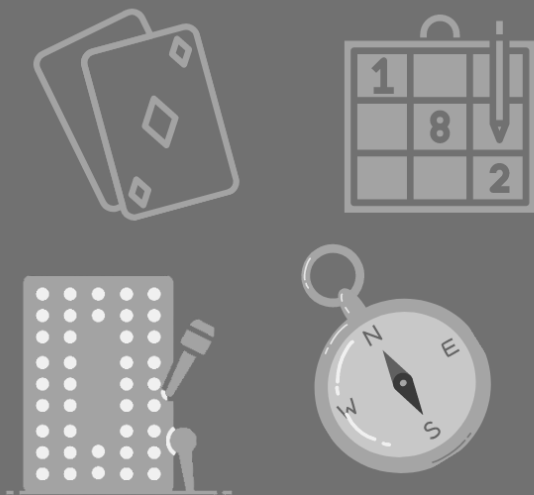


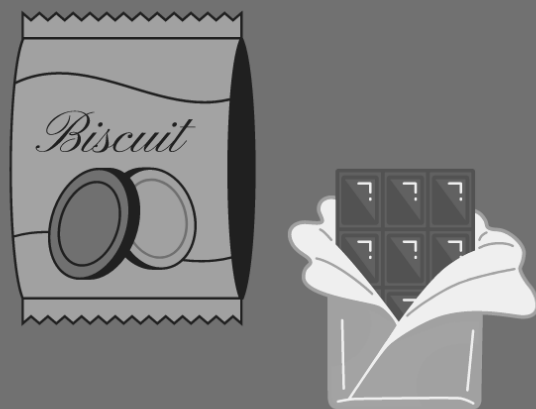
## Toiletries



## Warm clothing



## Play



## Snacks



# MINISTRY TO SEAFARERS Christmas Parcel Drive '21

Each parcel tells the story of the  
Greatest Gift of All: *Jesus Christ*



**"Thank you...so much for  
not only bringing us commodities  
and edible goodies...but more for  
bringing us God's love and hope!"**

**– an anonymous seafarer, M/V Livorno Express**

Seafarers are the front-line workers of the maritime industry, carrying 90% of global trade. They play a vital role in ensuring the global flow of goods that we depend on. Since the start of the COVID-19 pandemic, they have faced extended periods at sea which has had significant, negative consequences on their physical and mental well-being.

We are ready to deliver your tangible expressions of love and encouragement by way of a personal gift. Your participation means that 1500 seafarers will know that they are not alone and that others are thinking of them and grateful for their work. **Thank you!**

## **Two ways to participate:**

1 - Pack a bag (15"x12") suitable for a **male**. Include **new items only** in original packaging. There are four categories of items: **Toiletries** (toothbrush/paste, soap, shampoo, razor/cream, cologne, hand sanitizer/mask), **Warm clothing** (toque, socks, gloves), **Snacks** (biscuits, chocolate) and **Play** (Sudoku, playing cards, calendar).

*Please:* No office or cleaning supplies.

Ship your parcels to us by November or take advantage of the free drop-off locations posted by mid-October at [www.ministrytoseafarers.org/parcels](http://www.ministrytoseafarers.org/parcels).

2 - Pack a virtual Christmas parcel by make a donation and we'll do the shopping for you. You can add a personal message which we'll include on a card. Visit the **Donate** page of our website and choose the *Challenge '21: Pack a virtual Christmas parcel* option.

**NOTE:** We also accept gently used winter coats and warm sweaters of all sizes for men.

## **How to make a fabric draw-string bag:**

**Instructional Video:** <https://www.youtube.com/watch?v=s5B9VJS5fvg>: (We're not affiliated with this link.) It takes about 20 minutes to sew one bag. The only change we suggest is beginning with a piece of fabric (any design will do) that measures 14"x32" in order to end up with a finished product of 12"x15".

**Thank you for your generosity!** If you need further help or have a question, please contact Patty at [info@ministrytoseafarers.org](mailto:info@ministrytoseafarers.org) or at 514-849-3234.