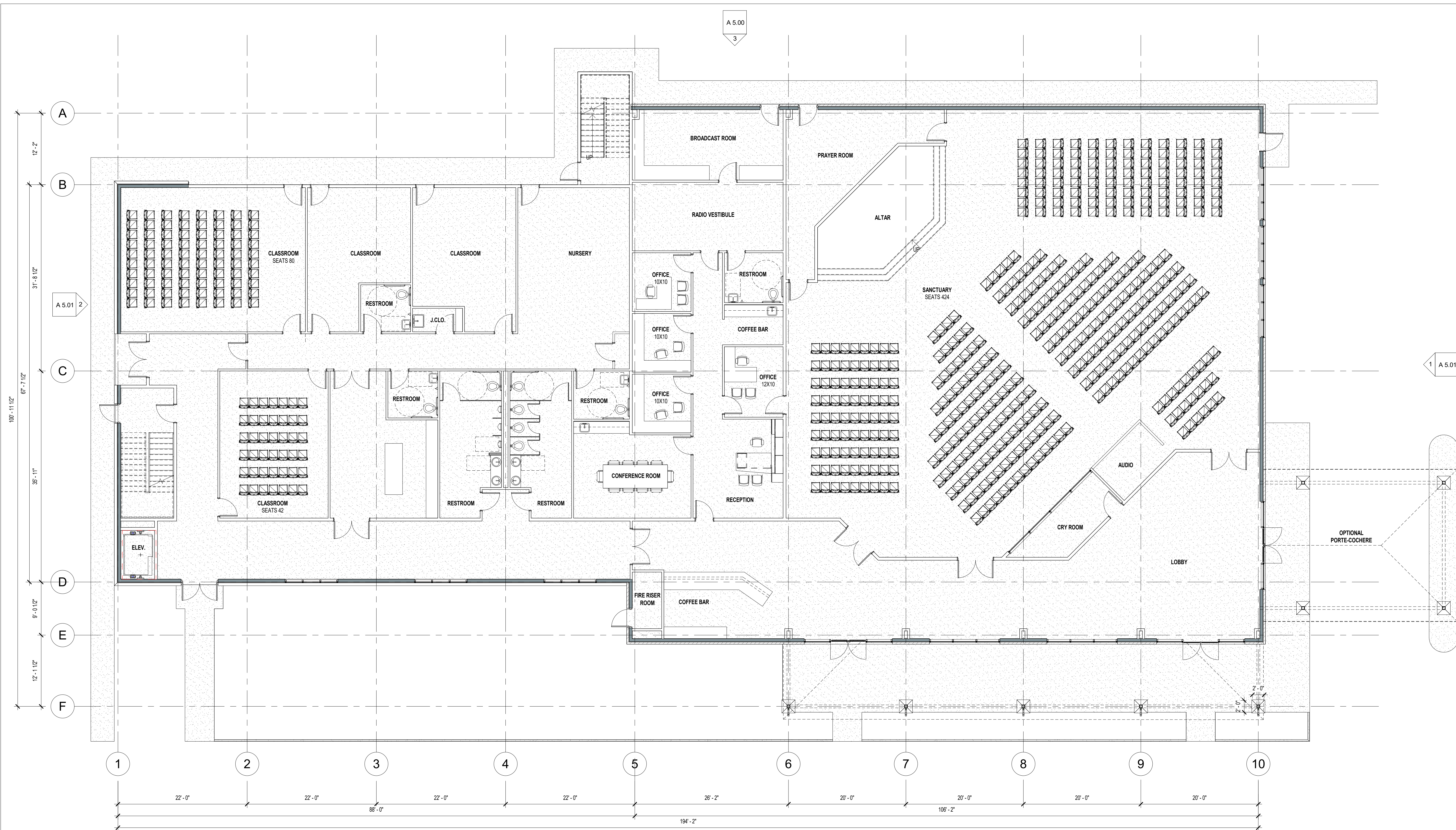


**PRELIMINARY
NOT FOR
PERMITTING,
REGULATORY
APPROVAL OR
CONSTRUCTION**



1 T.O. Slab First Floor
1/8" = 1'-0"

W. R. Barineau and Associates
ARCHITECTS AND LAND PLANNERS

100 BUNNY RUN LANE, SUITE 300 HORSESHOE BAY, TEXAS 78657
PHONE (830) 598-6260

Revisions

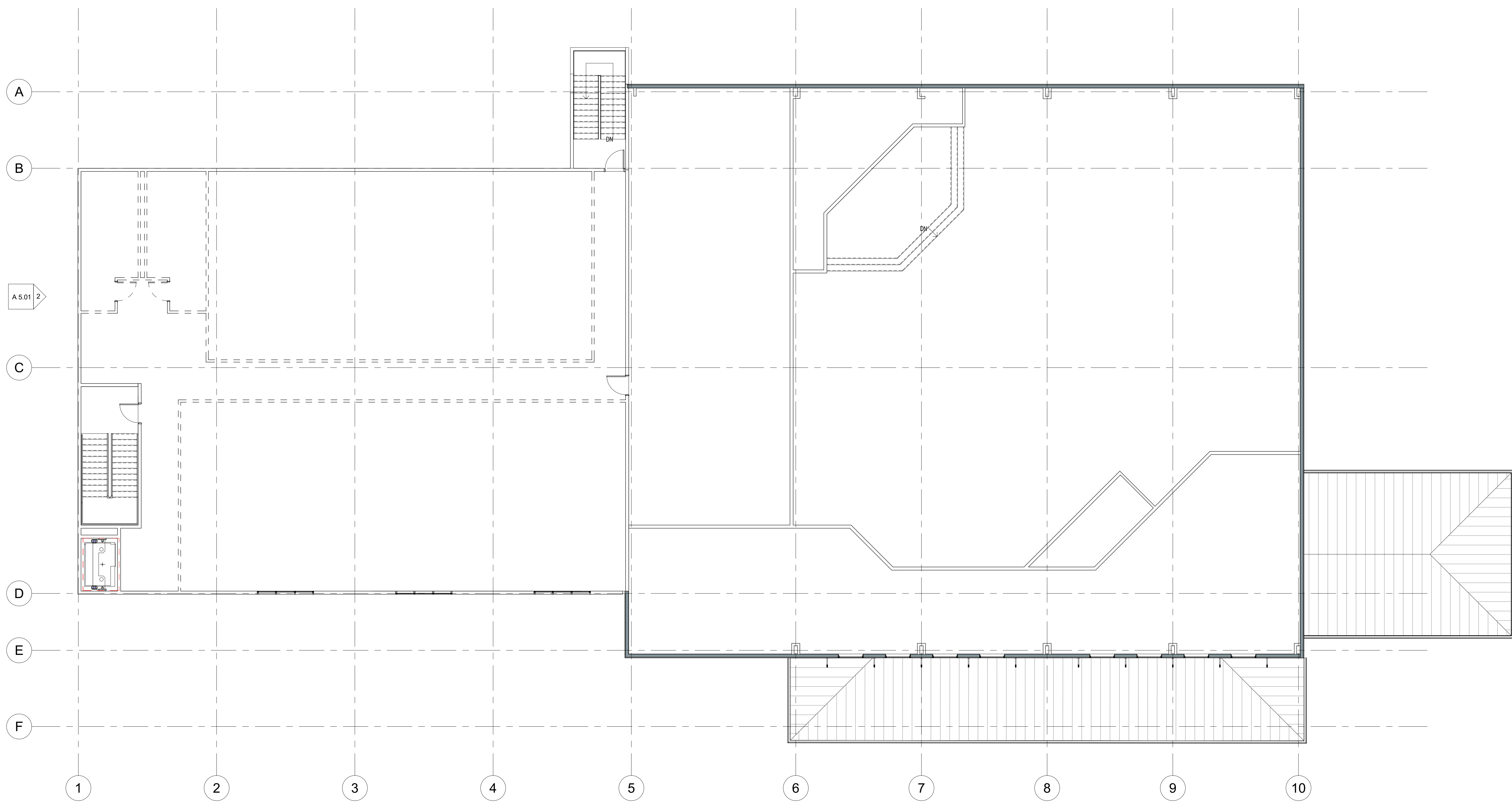
ROCKPILE CHURCH

MARBLE FALLS, TX

Project No.
19xxx
Sheet No.

A 3.00
Sheet Title
Floor Plan

**PRELIMINARY
NOT FOR
PERMITTING,
REGULATORY
APPROVAL OR
CONSTRUCTION**



1 T.O. Deck Second Floor
1/8" = 1'-0"

W. R. Barineau and Associates
ARCHITECTS AND LAND PLANNERS

100 BUNNY RUN LANE, SUITE 300 HORSESHOE BAY, TEXAS 78657
PHONE (830) 598-6260

Revisions

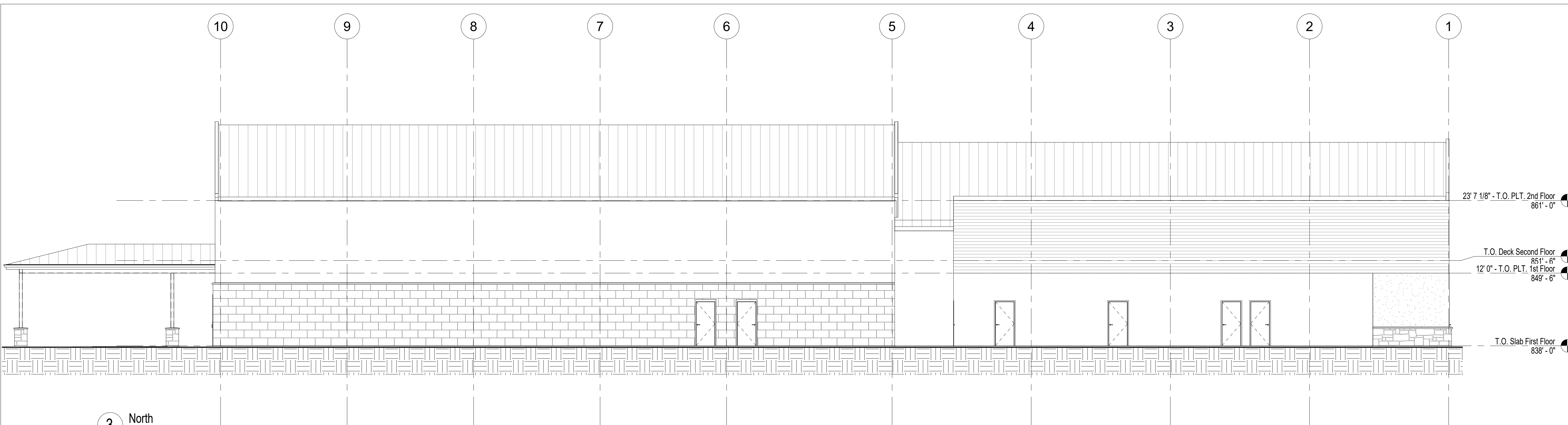
ROCKPILE CHURCH

MARBLE FALLS, TX

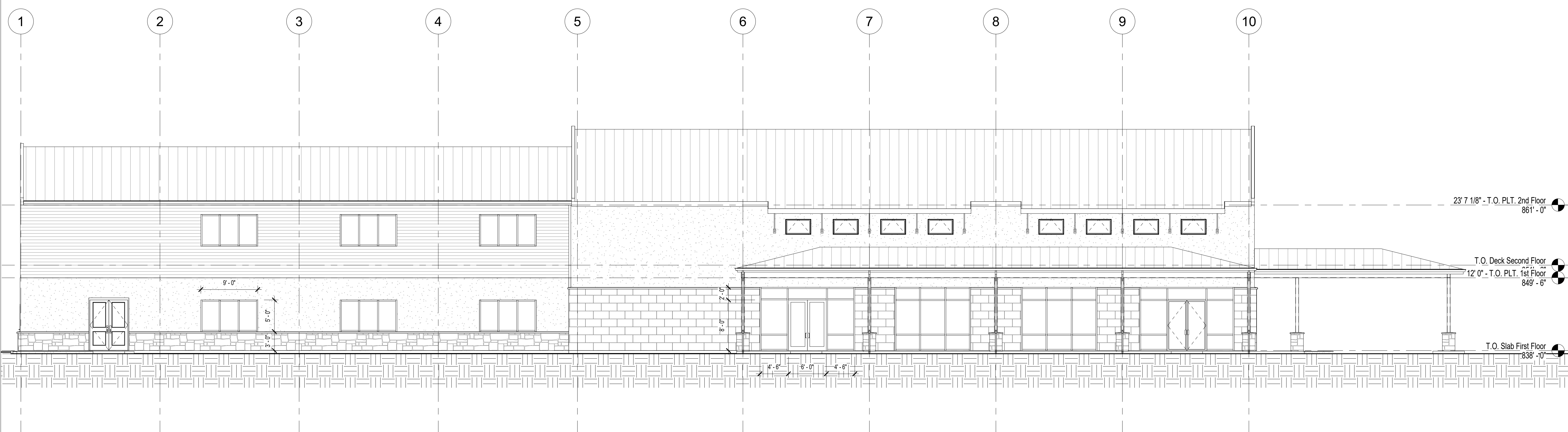
Project No.
19xxx
Sheet No.

A 3.01
Floor Plan

**PRELIMINARY
NOT FOR
PERMITTING,
REGULATORY
APPROVAL OR
CONSTRUCTION**



3 North
1/8" = 1'-0"

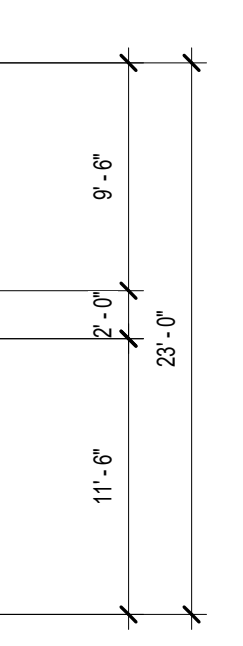


4 South
1/8" = 1'-0"

W. R. Barineau and Associates
ARCHITECTS AND LAND PLANNERS

100 BUNNY RUN LANE, SUITE 300 HORSESHOE BAY, TEXAS 78657
PHONE (830) 598-6260

Revisions



ROCKPILE CHURCH
MARBLE FALLS, TX

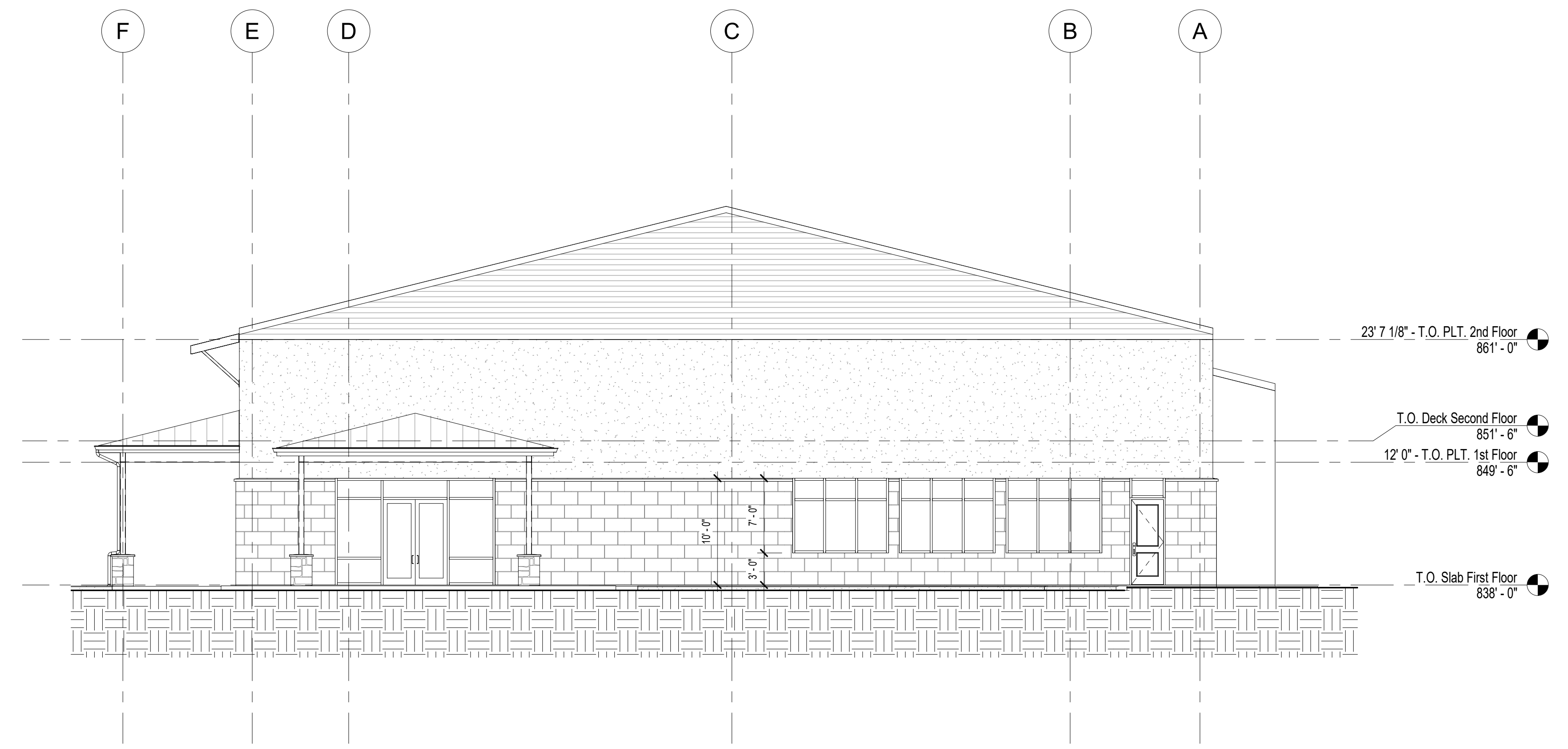
Project No.
19xxx
Sheet No.

A 5.00
Elevations

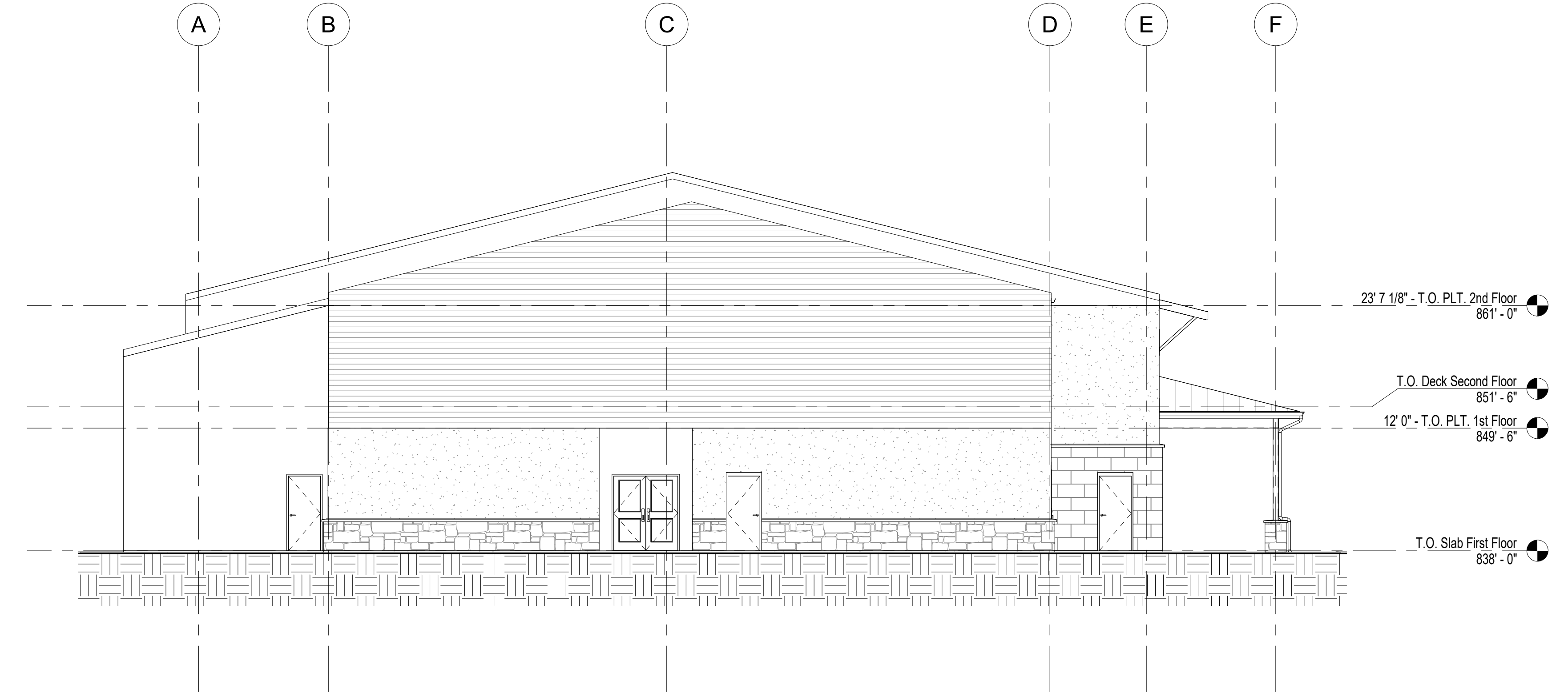
**PRELIMINARY
NOT FOR
PERMITTING,
REGULATORY
APPROVAL OR
CONSTRUCTION**

W. R. Barineau and Associates
ARCHITECTS AND LAND PLANNERS

100 BUNNY RUN LANE, SUITE 300 HORSESHOE BAY, TEXAS 78657
PHONE (830) 598-6260



1 East
1/8" = 1'-0"



2 West
1/8" = 1'-0"

Revisions

ROCKPILE CHURCH
I
MARBLE FALLS, TX

Project No. 19xxx
Sheet No.

A 5.01
Elevations