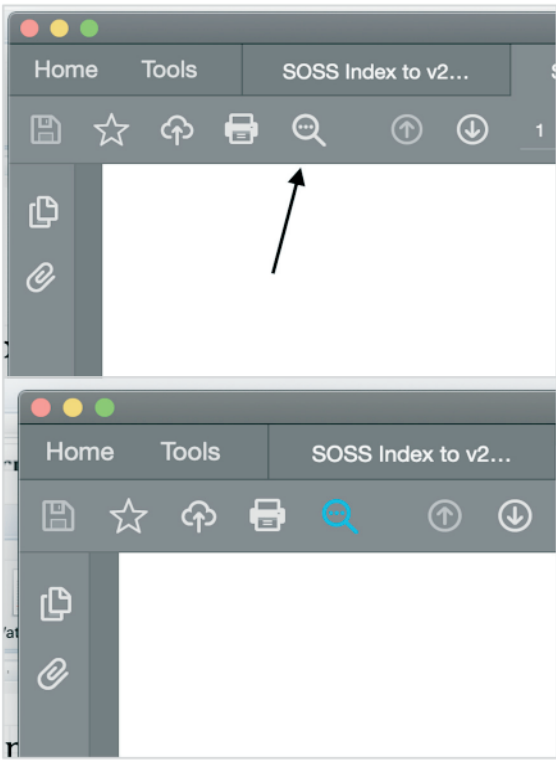


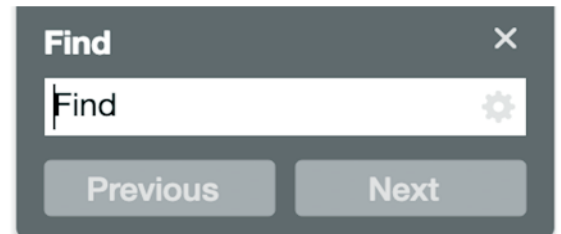
How to search this SOSS Index for a particular topic:



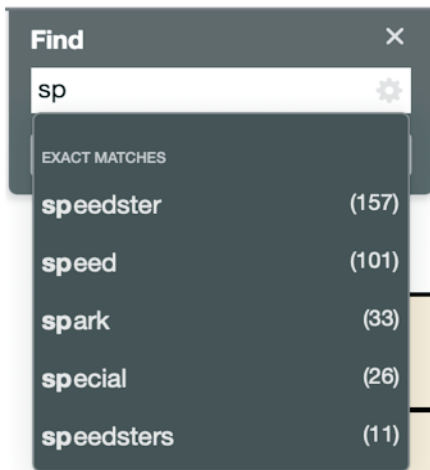
1. In the top left portion of your computer screen, locate the magnifier-shape symbol indicated by the arrow in this image.

2. Move your cursor over the symbol. When the symbol turns blue, click on it. This click should bring up a “Find” box (shown below) in the upper portion of your computer screen.

3. Click in the white “Find” box area and key in a word, short phrase or number/year you wish to find in the Index. Word entries are not case sensitive.



Word entries are not case sensitive.

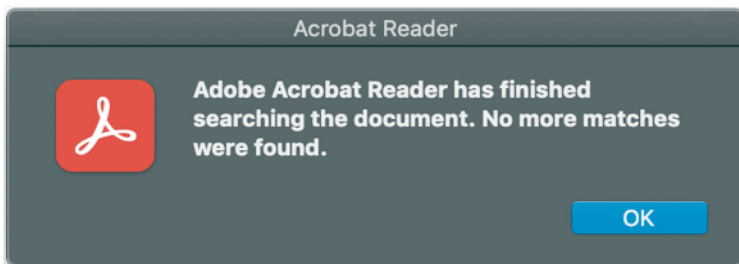


4. Note that, with each successive letter or number keyed in, the Find box begins to show words within the Index of Articles that begin with those letters or numbers, along with the number found of each possible word (shown in parentheses.) You may either continue keying in the remainder of your word/phrase, or click on one of the found words.

Pop Evans	V9.1	24 - 26
RAJO Jack - Part 2	V9.1	30 - 31
Real Men Drive Speedsters (Picture)	V9.1	Back
Spring Tension (Letter)	V9.1	36
Stromberg 81 Rebuild Kits (Letter)	V9.1	40

5. In this example, if you clicked on “speedsters”, the Index pdf screen will advance

or move back to the first location of that word or phrase, and highlight it with a blue background (shown above.) To advance to the next found word, click on “Next” in the Find box, or click “Previous” to move backward.



6. When you have advanced through all of the found words, this box will appear in your screen. Click “OK” to close this box.

Search return possibilities are obviously limited to words, phrases and numbers that are found in this SOSS Index of Articles. These include titles of articles and letters, along with names of SOSS members and guests where available who have submitted published articles and letters.